

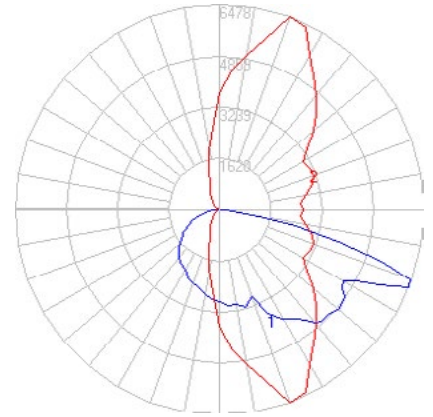
# BEGA



Photometric Filename: 99599.IES

TEST: L071704010  
 TEST LAB: LIGHT LABORATORY, INC.  
 DATE: 7/18/2017  
 LUMINAIRE: 99 599  
 LAMP: 94.2W LED

All results in accordance with IESNA LM-79



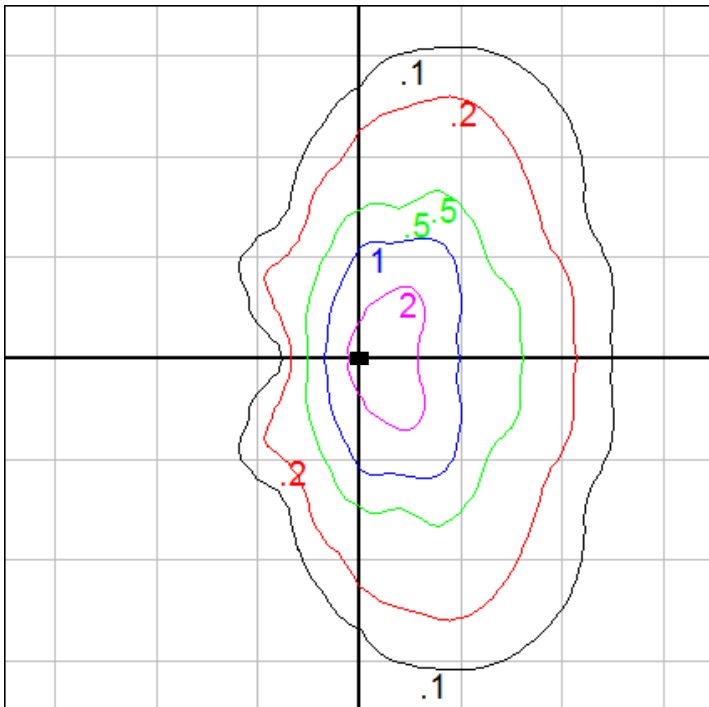
### Characteristics

|                                    |                   |
|------------------------------------|-------------------|
| IES Classification                 | Type III          |
| Longitudinal Classification        | Medium            |
| Lumens Per Lamp                    | N.A. (absolute)   |
| Total Lamp Lumens                  | N.A. (absolute)   |
| Luminaire Lumens                   | 13282             |
| Downward Total Efficiency          | N.A.              |
| Total Luminaire Efficiency         | N.A.              |
| Luminaire Efficacy Rating (LER)    | 115               |
| Total Luminaire Watts              | 115.4             |
| Ballast Factor                     | 1.00              |
| Upward Waste Light Ratio           | 0.00              |
| Max. Cd.                           | 6478 (70H, 67.5V) |
| Max. Cd. (<90 Vert.)               | 6478 (70H, 67.5V) |
| Max. Cd. (At 90 Deg. Vert.)        | 0 (0.0%Lum)       |
| Max. Cd. (80 to <90 Deg. Vert.)    | 1989 (15.0%Lum)   |
| Cutoff Classification (deprecated) | N.A. (absolute)   |

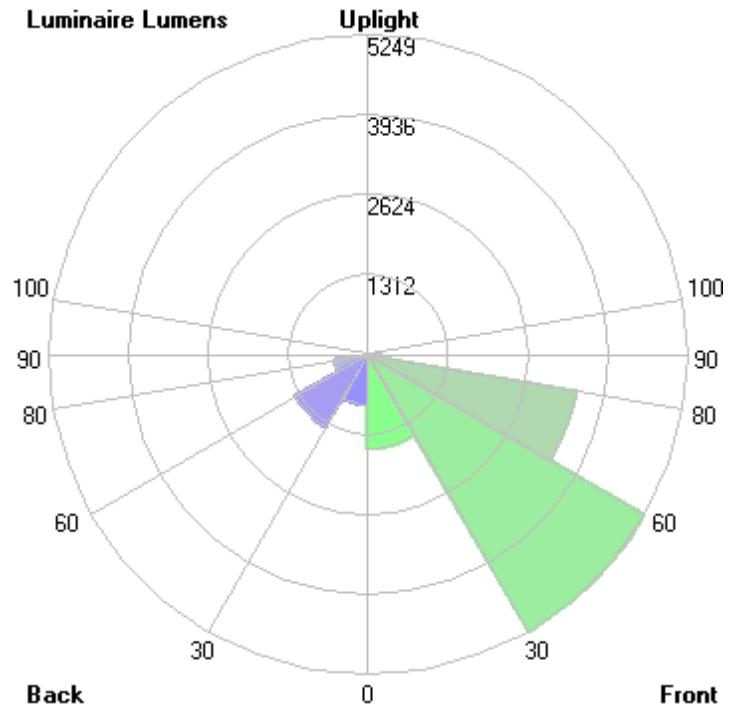
### Lum. Classification System (LCS)

| LCS Zone     | Lumens         | %Lamp       | %Lum         |
|--------------|----------------|-------------|--------------|
| FL (0-30)    | 1541.5         | N.A.        | 11.6         |
| FM (30-60)   | 5248.5         | N.A.        | 39.5         |
| FH (60-80)   | 3468.6         | N.A.        | 26.1         |
| FVH (80-90)  | 231.3          | N.A.        | 1.7          |
| BL (0-30)    | 830.3          | N.A.        | 6.3          |
| BM (30-60)   | 1367.8         | N.A.        | 10.3         |
| BH (60-80)   | 552.5          | N.A.        | 4.2          |
| BVH (80-90)  | 41.7           | N.A.        | 0.3          |
| UL (90-100)  | 0.0            | N.A.        | 0.0          |
| UH (100-180) | 0.0            | N.A.        | 0.0          |
| <b>Total</b> | <b>13282.2</b> | <b>N.A.</b> | <b>100.0</b> |

**BUG Rating B2-U0-G3**



Mounting Height = 34 ft. 8 in. (Pole - 3408SF)  
 Grid Spacing = 35 ft.



In the interest of product improvement, BEGA reserves the right to make technical changes without notice.

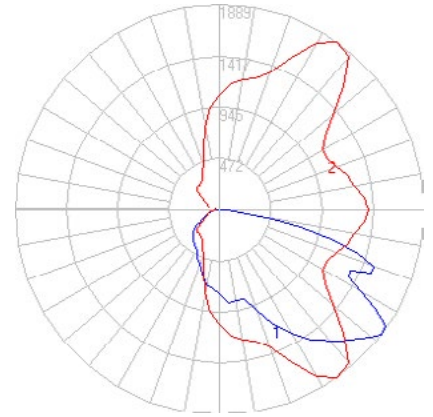
# BEGA



Photometric Filename: 99599AMB.IES

TEST: L061914305  
 TEST LAB: LIGHT LABORATORY, INC.  
 DATE: 7/2/2019  
 LUMINAIRE: 99599 Amber  
 LAMP: 105.6W LED

All results in accordance with IESNA LM-79



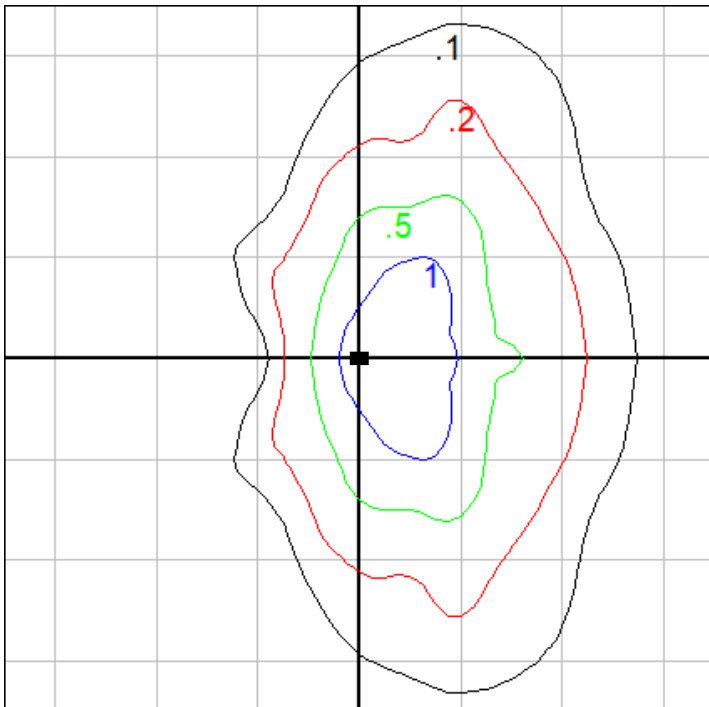
## Characteristics

|                                    |                   |
|------------------------------------|-------------------|
| IES Classification                 | Type III          |
| Longitudinal Classification        | Short             |
| Lumens Per Lamp                    | N.A. (absolute)   |
| Total Lamp Lumens                  | N.A. (absolute)   |
| Luminaire Lumens                   | 3735              |
| Downward Total Efficiency          | N.A.              |
| Total Luminaire Efficiency         | N.A.              |
| Luminaire Efficacy Rating (LER)    | 31                |
| Total Luminaire Watts              | 120.4             |
| Ballast Factor                     | 1.00              |
| Upward Waste Light Ratio           | 0.00              |
| Max. Cd.                           | 1889 (55H, 52.5V) |
| Max. Cd. (<90 Vert.)               | 1889 (55H, 52.5V) |
| Max. Cd. (At 90 Deg. Vert.)        | 0 (0.0%Lum)       |
| Max. Cd. (80 to <90 Deg. Vert.)    | 500 (13.4%Lum)    |
| Cutoff Classification (deprecated) | N.A. (absolute)   |

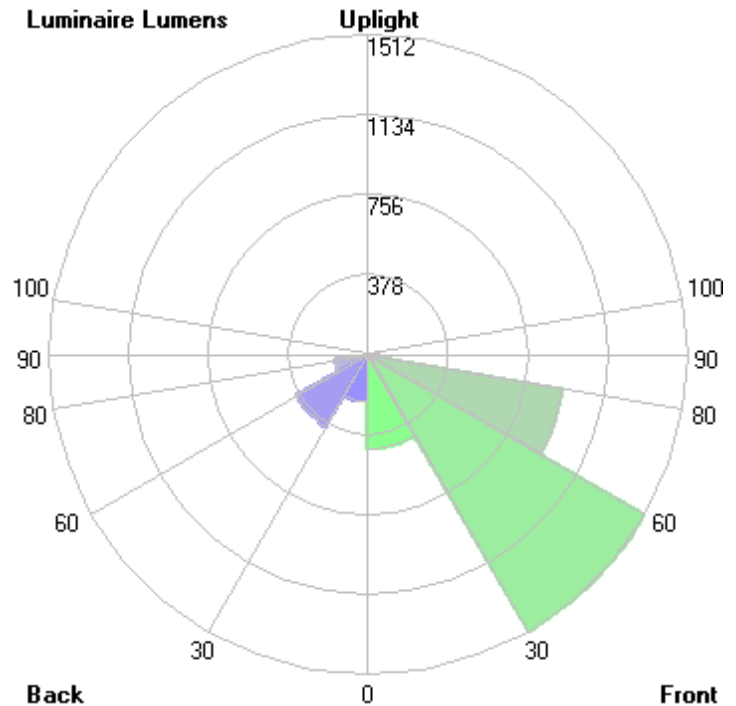
## Lum. Classification System (LCS)

| LCS Zone     | Lumens | %Lamp | %Lum  |
|--------------|--------|-------|-------|
| FL (0-30)    | 446.3  | N.A.  | 11.9  |
| FM (30-60)   | 1511.7 | N.A.  | 40.5  |
| FH (60-80)   | 937.6  | N.A.  | 25.1  |
| FVH(80-90)   | 54.6   | N.A.  | 1.5   |
| BL (0-30)    | 224.5  | N.A.  | 6.0   |
| BM (30-60)   | 392.7  | N.A.  | 10.5  |
| BH (60-80)   | 156.6  | N.A.  | 4.2   |
| BVH(80-90)   | 10.8   | N.A.  | 0.3   |
| UL (90-100)  | 0.0    | N.A.  | 0.0   |
| UH (100-180) | 0.0    | N.A.  | 0.0   |
| Total        | 3734.8 | N.A.  | 100.0 |

**BUG Rating B1-U0-G1**



Mounting Height = 24 ft. 8 in. (Pole - 2408SF)  
 Grid Spacing = 20 ft.



In the interest of product improvement, BEGA reserves the right to make technical changes without notice.