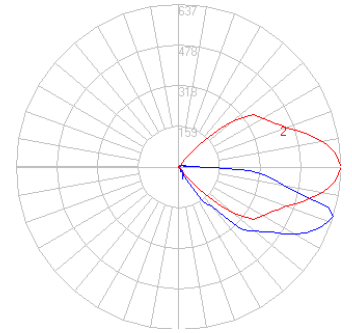


# BEGA

Photometric Filename: 99554.ies

TEST BE-99554  
 TEST LAB: BEGA  
 DATE: 8/10/2015  
 LUMINAIRE: 99 554  
 LAMP: 6.3W LED



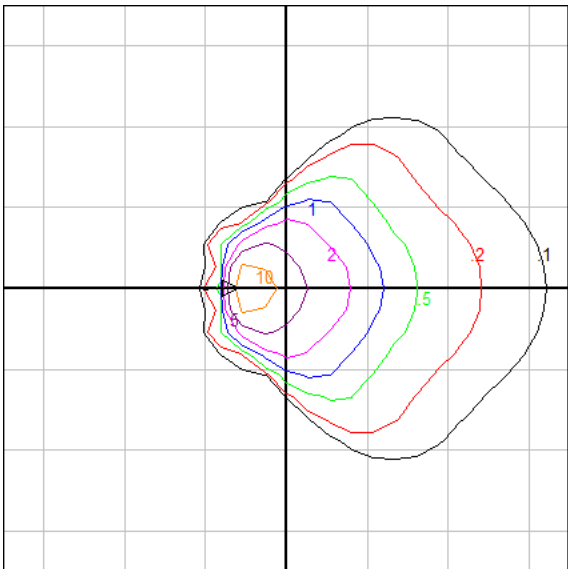
### Characteristics

IES Classification	Type IV
Longitudinal Classification	Very Short
Lumens Per Lamp	N.A. (absolute)
Total Lamp Lumens	N.A. (absolute)
Luminaire Lumens	444
Downward Total Efficiency	N.A.
Total Luminaire Efficiency	N.A.
Luminaire Efficacy Rating (LER)	49
Total Luminaire Watts	9
Ballast Factor	1.00
Upward Waste Light Ratio	0.03
Max. Cd.	636.7 (360H, 72.5V)
Max. Cd. (<90 Vert.)	636.7 (360H, 72.5V)
Max. Cd. (At 90 Deg. Vert.)	131 (29.5%Lum)
Max. Cd. (80 to <90 Deg. Vert.)	415.2 (93.5%Lum)
Cutoff Classification (deprecated)	N.A. (absolute)

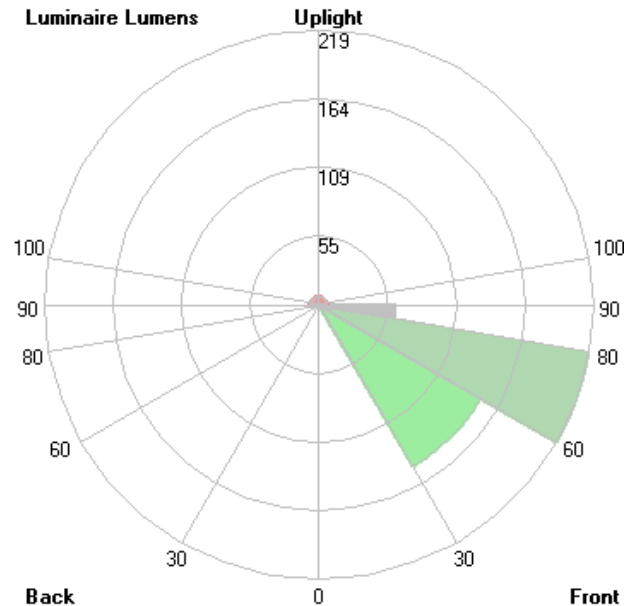
### Lum. Classification System (LCS)

LCS Zone	Lumens	%Lamp	%Lum
FL (0-30)	1.0	N.A.	0.2
FM (30-60)	148.5	N.A.	33.4
FH (60-80)	218.7	N.A.	49.2
FVH(80-90)	60.8	N.A.	13.7
BL (0-30)	0.2	N.A.	0.1
BM (30-60)	0.6	N.A.	0.1
BH (60-80)	0.5	N.A.	0.1
BVH(80-90)	0.2	N.A.	0.1
UL (90-100)	7.3	N.A.	1.6
UH (100-180)	6.3	N.A.	1.4
<b>Total</b>	<b>444.1</b>	<b>N.A.</b>	<b>100.0</b>

**BUG Rating B0-U1-G1**



Grid Spacing = 5 ft.



In the interest of product improvement, BEGA reserves the right to make technical changes without notice.