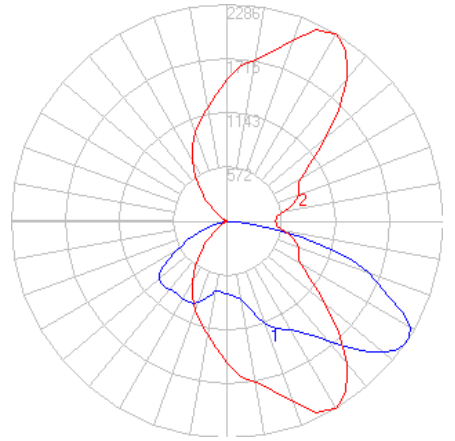


BEGA



Photometric Filename: 99474.IES

TEST: BE_99556
 TEST LAB: BEGA
 DATE: 2/25/2016
 LUMINAIRE: 99 474
 LAMP: (2) 31.4W LED

*Report based on a single IES file, see below for twin head iso-footcandle template

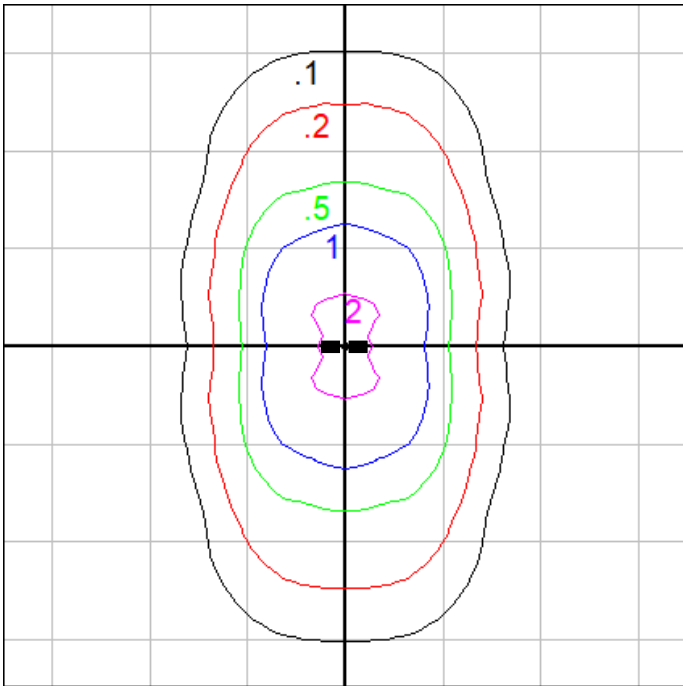
Characteristics

IES Classification	Type II
Longitudinal Classification	Short
Lumens Per Lamp	N.A. (absolute)
Total Lamp Lumens	N.A. (absolute)
Luminaire Lumens	4555
Downward Total Efficiency	N.A.
Total Luminaire Efficiency	N.A.
Luminaire Efficacy Rating (LER)	130
Total Luminaire Watts	35
Ballast Factor	1.00
Upward Waste Light Ratio	0.00
Max. Cd.	2286.4 (300H, 57.5V)
Max. Cd. (<90 Vert.)	2286.4 (300H, 57.5V)
Max. Cd. (At 90 Deg. Vert.)	0 (0.0%Lum)
Max. Cd. (80 to <90 Deg. Vert.)	490.8 (10.8%Lum)
Cutoff Classification (deprecated)	N.A. (absolute)

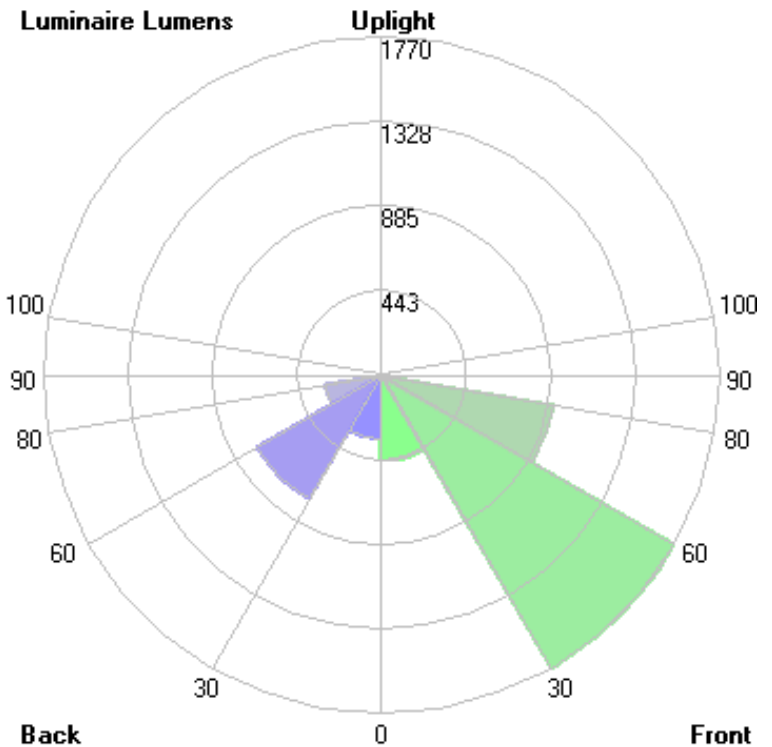
Lum. Classification System (LCS)

LCS Zone	Lumens	%Lamp	%Lum
FL (0-30)	449.3	N.A.	9.9
FM (30-60)	1770.3	N.A.	38.9
FH (60-80)	910.5	N.A.	20.0
FVH (80-90)	37.2	N.A.	0.8
BL (0-30)	333.2	N.A.	7.3
BM (30-60)	750.6	N.A.	16.5
BH (60-80)	296.8	N.A.	6.5
BVH (80-90)	6.6	N.A.	0.1
UL (90-100)	0.0	N.A.	0.0
UH (100-180)	0.0	N.A.	0.0
Total	4554.5	N.A.	100.0

BUG Rating B1-U0-G1

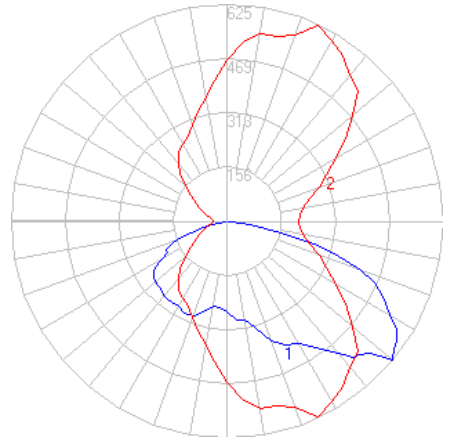


Mounting Height = 15ft 8in (Pole 1508HR)
 Grid Spacing = 20 ft.



In the interest of product improvement, BEGA reserves the right to make technical changes without notice.

BEGA



Photometric Filename: 99474AMB.IES

TEST: L061914301
 TEST LAB: LIGHT LABORATORY, INC.
 DATE: 7/17/2019
 LUMINAIRE: 99 474 Amber
 LAMP: (2) 35.2W LED

*Report based on a single IES file, see below for twin head iso-footcandle template

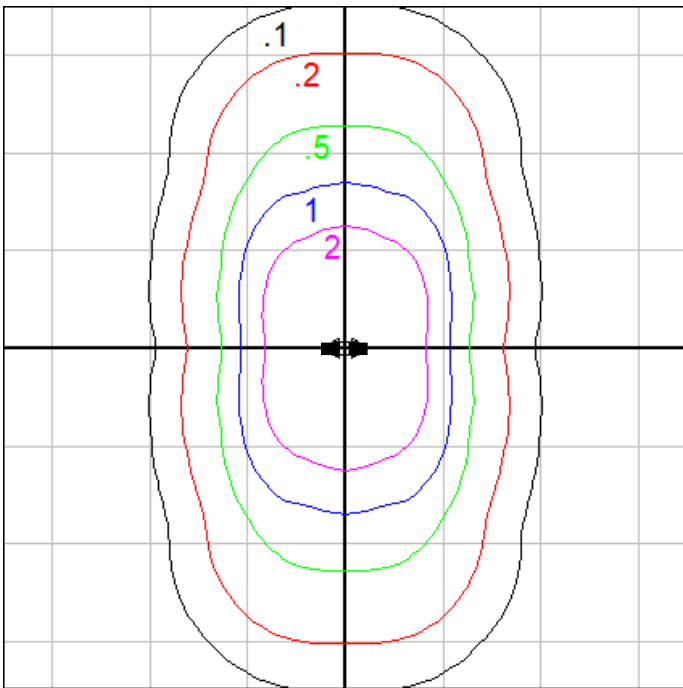
Characteristics

IES Classification	Type II
Longitudinal Classification	Short
Lumens Per Lamp	N.A. (absolute)
Total Lamp Lumens	N.A. (absolute)
Luminaire Lumens	1285
Downward Total Efficiency	N.A.
Total Luminaire Efficiency	N.A.
Luminaire Efficacy Rating (LER)	31
Total Luminaire Watts	41.11
Ballast Factor	1.00
Upward Waste Light Ratio	0.00
Max. Cd.	625.29 (65H, 50V)
Max. Cd. (<90 Vert.)	625.29 (65H, 50V)
Max. Cd. (At 90 Deg. Vert.)	0 (0.0%Lum)
Max. Cd. (80 to <90 Deg. Vert.)	67.12 (5.2%Lum)
Cutoff Classification (deprecated)	N.A. (absolute)

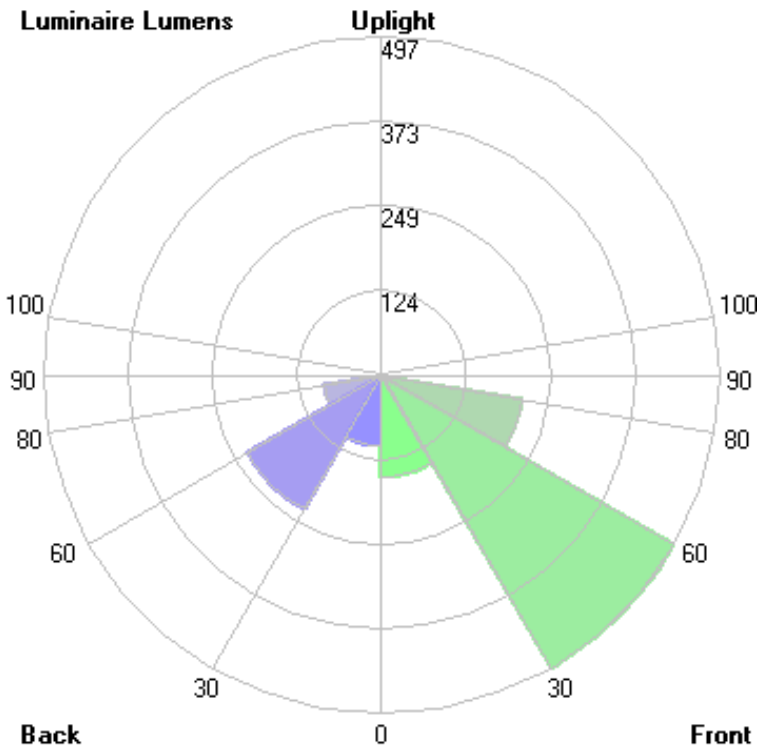
Lum. Classification System (LCS)

LCS Zone	Lumens	%Lamp	%Lum
FL (0-30)	149.6	N.A.	11.6
FM (30-60)	497.0	N.A.	38.7
FH (60-80)	209.4	N.A.	16.3
FVH(80-90)	7.0	N.A.	0.5
BL (0-30)	105.2	N.A.	8.2
BM (30-60)	227.6	N.A.	17.7
BH (60-80)	85.3	N.A.	6.6
BVH(80-90)	3.6	N.A.	0.3
UL (90-100)	0.0	N.A.	0.0
UH (100-180)	0.0	N.A.	0.0
Total	1284.7	N.A.	100.0

BUG Rating B1-U0-G0



Mounting Height = 15ft 8in (Pole 1508HR)
 Grid Spacing = 15 ft.



In the interest of product improvement, BEGA reserves the right to make technical changes without notice.