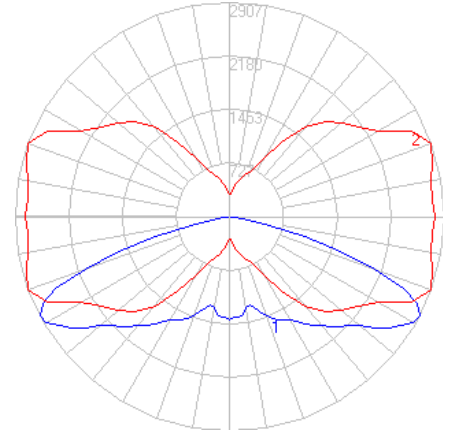


BEGA

Photometric Filename: 99459.IES

TEST: BE_99459
 TEST LAB: BEGA
 DATE: 10/4/2017
 LUMINAIRE: 99 459
 LAMP: 47.2W LED



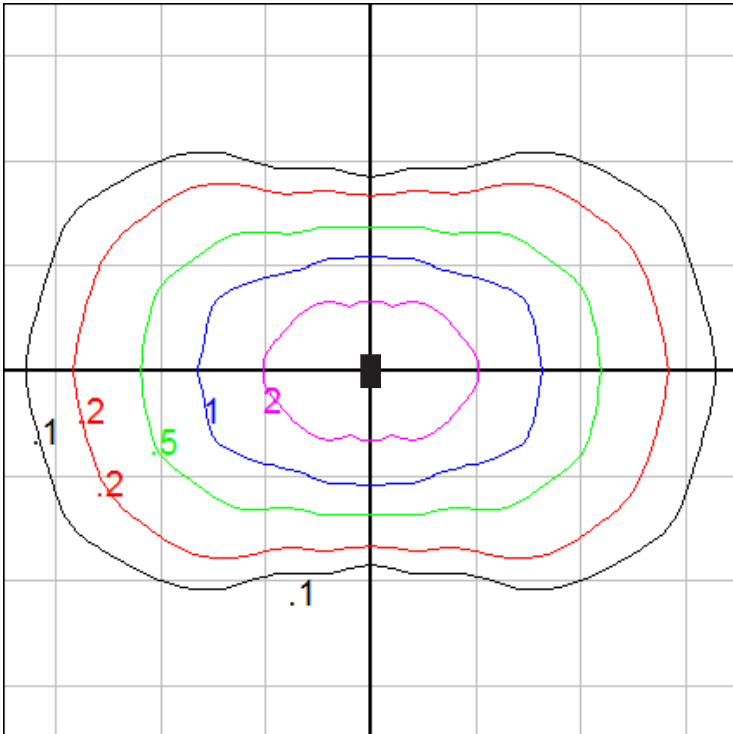
Characteristics

IES Classification	Type IV
Longitudinal Classification	Very Short
Lumens Per Lamp	N.A. (absolute)
Total Lamp Lumens	N.A. (absolute)
Luminaire Lumens	7332
Downward Total Efficiency	N.A.
Total Luminaire Efficiency	N.A.
Luminaire Efficacy Rating (LER)	122
Total Luminaire Watts	60
Ballast Factor	1.00
Upward Waste Light Ratio	0.00
Max. Cd.	2906.924 (340H, 62.5V)
Max. Cd. (<90 Vert.)	2906.924 (340H, 62.5V)
Max. Cd. (At 90 Deg. Vert.)	.184 (0.0%Lum)
Max. Cd. (80 to <90 Deg. Vert.)	170.66 (2.3%Lum)
Cutoff Classification (deprecated)	N.A. (absolute)

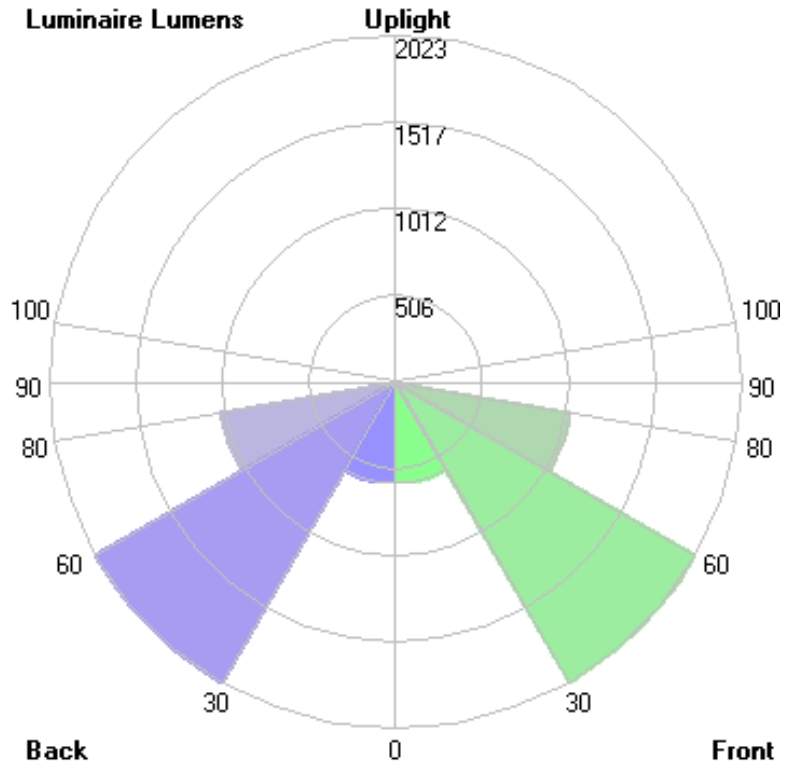
Lum. Classification System (LCS)

LCS Zone	Lumens	%Lamp	%Lum
FL (0-30)	591.5	N.A.	8.1
FM (30-60)	2023.2	N.A.	27.6
FH (60-80)	1036.5	N.A.	14.1
FVH (80-90)	14.9	N.A.	0.2
BL (0-30)	591.5	N.A.	8.1
BM (30-60)	2023.2	N.A.	27.6
BH (60-80)	1036.5	N.A.	14.1
BVH (80-90)	14.9	N.A.	0.2
UL (90-100)	0.0	N.A.	0.0
UH (100-180)	0.0	N.A.	0.0
Total	7332.2	N.A.	100.0

BUG Rating B3-U0-G3



Mounting Height = 20 ft. Grid Spacing = 20 ft.



In the interest of product improvement, BEGA reserves the right to make technical changes without notice.

BEGA 1000 Bega Way, Carpinteria, CA 93013 (805)684-0533 Fax (805)566-9474 www.bega-us.com © Copyright BEGA-US 2017

10/4/2017