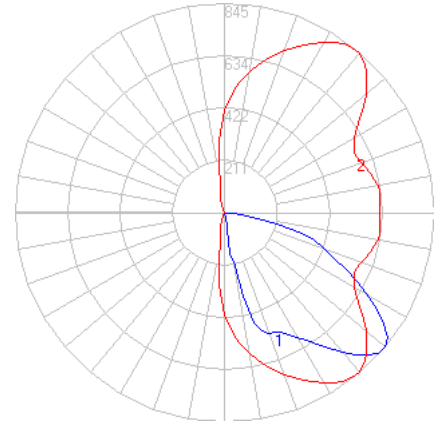


# BEGA

Photometric Filename: 99056.IES

TEST: BE\_99056  
 TEST LAB: BEGA  
 DATE: 11/23/2016  
 LUMINAIRE: 99 056  
 LAMP: 11.6W LED



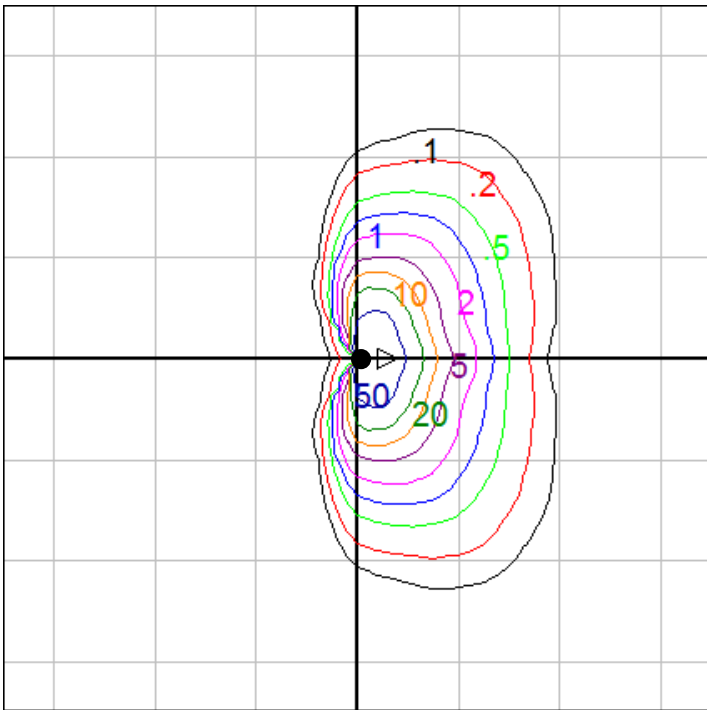
## Characteristics

IES Classification	Type III
Longitudinal Classification	Very Short
Lumens Per Lamp	N.A. (absolute)
Total Lamp Lumens	N.A. (absolute)
Luminaire Lumens	1361
Downward Total Efficiency	N.A.
Total Luminaire Efficiency	N.A.
Luminaire Efficacy Rating (LER)	97
Total Luminaire Watts	14
Ballast Factor	1.00
Upward Waste Light Ratio	0.00
Max. Cd.	844.8 (310H, 50V)
Max. Cd. (<90 Vert.)	844.8 (310H, 50V)
Max. Cd. (At 90 Deg. Vert.)	1.6 (0.1%Lum)
Max. Cd. (80 to <90 Deg. Vert.)	150.9 (11.1%Lum)
Cutoff Classification (deprecated)	N.A. (absolute)

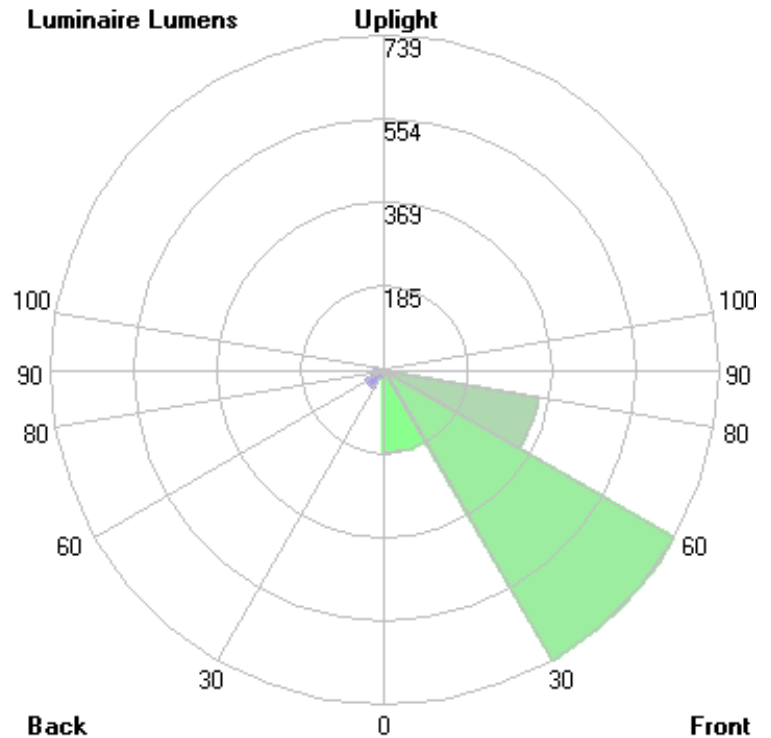
## Lum. Classification System (LCS)

<u>LCS Zone</u>	<u>Lumens</u>	<u>%Lamp</u>	<u>%Lum</u>
FL (0-30)	181.6	N.A.	13.3
FM (30-60)	738.7	N.A.	54.3
FH (60-80)	345.3	N.A.	25.4
FVH(80-90)	11.5	N.A.	0.8
BL (0-30)	12.1	N.A.	0.9
BM (30-60)	44.7	N.A.	3.3
BH (60-80)	26.3	N.A.	1.9
BVH(80-90)	0.8	N.A.	0.1
UL (90-100)	0.0	N.A.	0.0
UH (100-180)	0.0	N.A.	0.0
Total	1361.0	N.A.	100.0

**BUG Rating B0-U0-G1**



Grid Spacing = 5 ft.

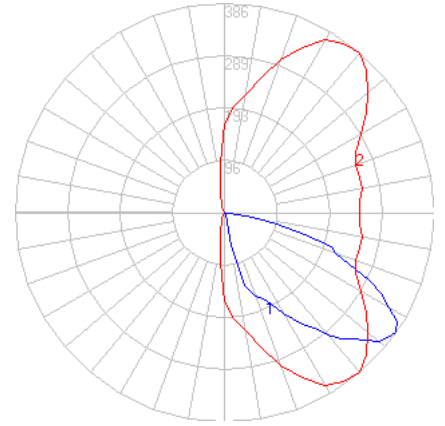


In the interest of product improvement, BEGA reserves the right to make technical changes without notice.

# BEGA

Photometric Filename: 99056AMB.IES

TEST: L061914303  
 TEST LAB: LIGHT LABORATORY, INC.  
 DATE: 7/2/2019  
 LUMINAIRE: 99056 Amber  
 LAMP: 17.6W LED



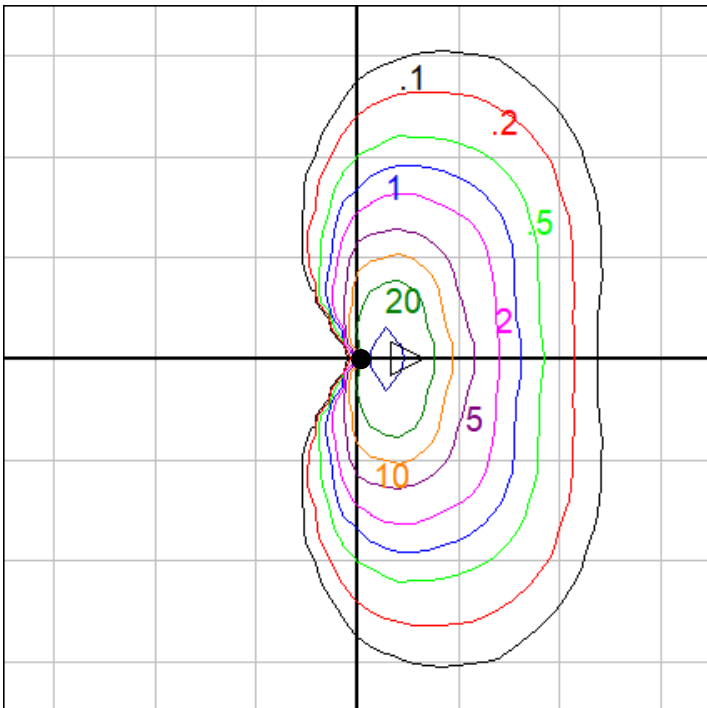
### Characteristics

IES Classification	Type III
Longitudinal Classification	Short
Lumens Per Lamp	N.A. (absolute)
Total Lamp Lumens	N.A. (absolute)
Luminaire Lumens	574
Downward Total Efficiency	N.A.
Total Luminaire Efficiency	N.A.
Luminaire Efficacy Rating (LER)	28
Total Luminaire Watts	20.73
Ballast Factor	1.00
Upward Waste Light Ratio	0.00
Max. Cd.	385.8 (50H, 55V)
Max. Cd. (<90 Vert.)	385.8 (50H, 55V)
Max. Cd. (At 90 Deg. Vert.)	0 (0.0%Lum)
Max. Cd. (80 to <90 Deg. Vert.)	4.32 (11.1%Lum)
Cutoff Classification (deprecated)	N.A. (absolute)

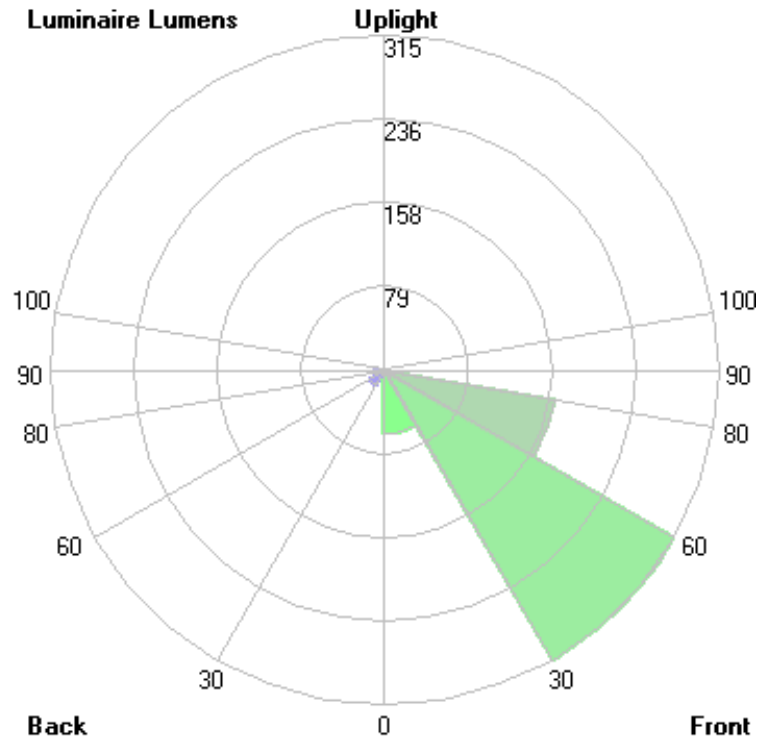
### Lum. Classification System (LCS)

<u>LCS Zone</u>	<u>Lumens</u>	<u>%Lamp</u>	<u>%Lum</u>
FL (0-30)	60.1	N.A.	10.5
FM (30-60)	315.0	N.A.	54.9
FH (60-80)	162.1	N.A.	28.3
FVH(80-90)	6.0	N.A.	1.1
BL (0-30)	3.4	N.A.	0.6
BM (30-60)	16.4	N.A.	2.9
BH (60-80)	10.1	N.A.	1.8
BVH(80-90)	0.5	N.A.	0.1
UL (90-100)	0.0	N.A.	0.0
UH (100-180)	0.0	N.A.	0.0
Total	573.6	N.A.	100.0

**BUG Rating B0-U0-G0**



Grid Spacing = 3 ft.



In the interest of product improvement, BEGA reserves the right to make technical changes without notice.