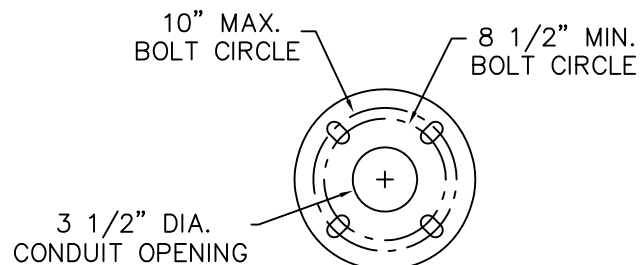
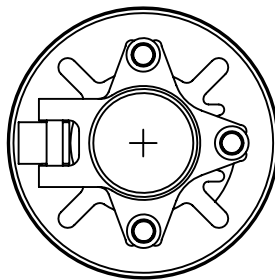


POLE BASE INCLUDES  
3/8"-16 TAPPED HOLE  
FOR GROUND CONNECTOR

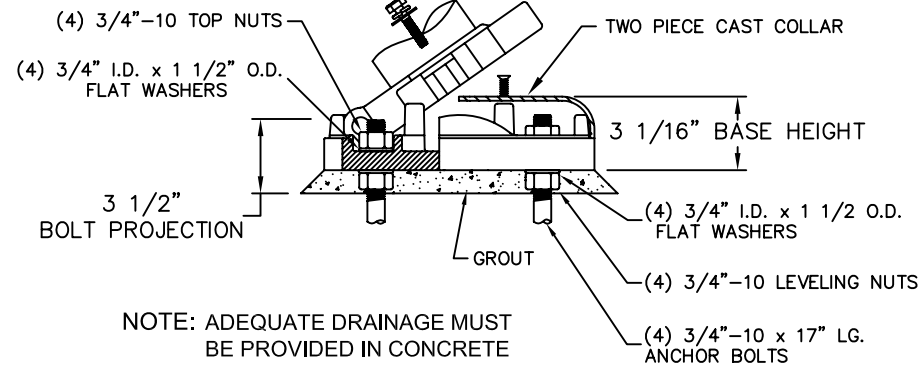


**BASE DETAIL**

STANDARD (4) 3/4" x 17"  
ANCHOR BOLTS & MTG. TEMPLATE  
SUPPLIED WITH POLE  
OR IN ADVANCE.

- (3) 1/2"-13 SS HEX HEAD TOP  
RETAINING BOLTS EACH WITH  
(1) SS FLATWASHERS AND (1)  
SS SPLIT LOCKWASHER

NOTE: TWO PIECE  
COLLAR NOT SHOWN



**DISCLAIMER**

BEGA-US WARRANTS THE SPECIFIC ANCHOR BOLTS & POLE COMBINATION ACCORDING TO THE PRODUCT NUMBER(S) AND DESCRIPTION(S). STRUCTURAL CHANGES TO THE POLE REQUESTED BY THE CUSTOMER INCLUDING CHANGES TO POLE LENGTH, MAY AFFECT THE COMPATIBILITY OF THE ANCHOR BOLTS AND CORRESPONDING POLES. BEGA-US IS NOT RESPONSIBLE FOR THE INCOMPATIBILITY OF THE ANCHOR BOLTS AND POLES RESULTING FROM SUCH STRUCTURAL CHANGES WITHOUT REVIEW BY THE BEGA-US ENGINEERING DEPT. THIS INCLUDES, BUT IS NOT LIMITED TO; ANY LABOR CHARGES, CHARGES FOR REPLACEMENT MATERIALS AND SHIPPING.

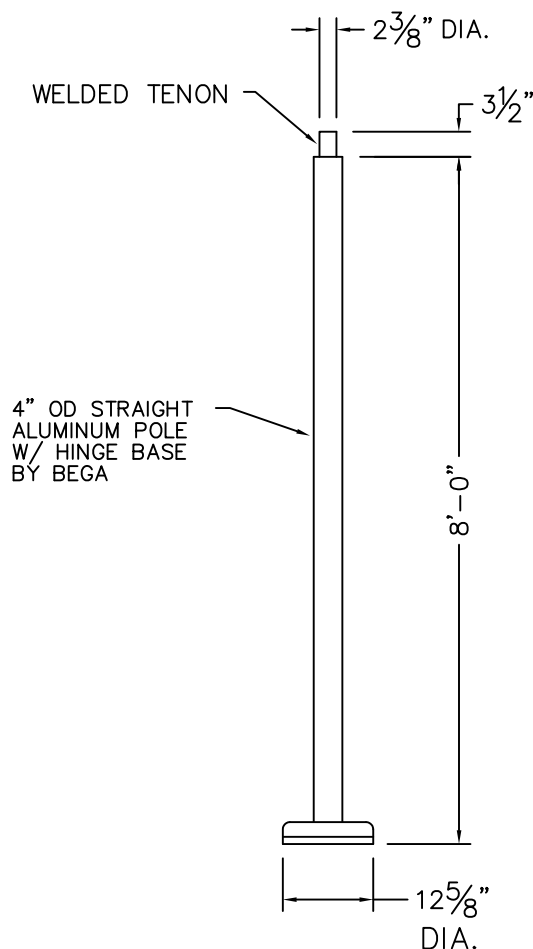
SEE LUMINAIRE SPECIFICATION SHEET FOR ADDITONAL DETAILS

MAXIMUM EPA AT VARIOUS MPH, ALLOWS FOR 1.3 GUST FACTOR*						
POLE NO.	MPH –	70	80	90	100	120
907HR	EPA –	15.1	11.3	8.6	6.8	4.2

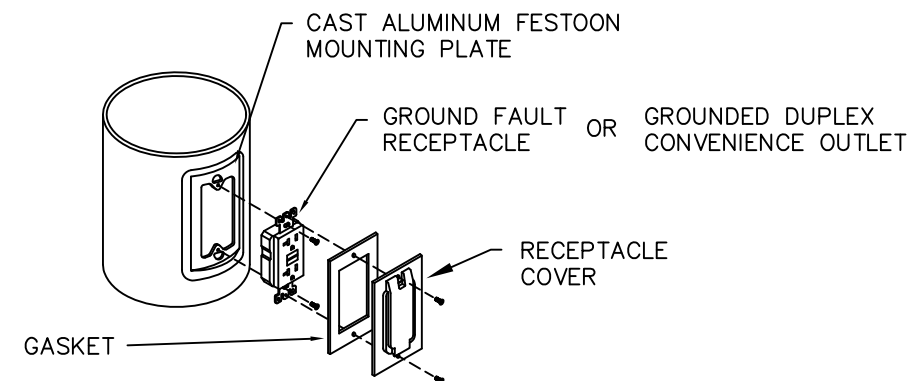
\*PER AASHTO 1994 WIND MAP

NOTE: DATA ABOVE ASSUMES GRADE LEVEL INSTALLATION AND  
A MAXIMUM LUMINAIRE WEIGHT OF 50 LBS.

CAUTION: RAISING OR LOWERING OF THE POLE REQUIRES ADEQUATE PREPERATION  
DO NOT UNDERESTIMATE THE FORCE REQUIRED TO RAISE OR LOWER  
POLES WITH HEAVY LUMINAIRES AT THE TOP.



**POLE OPTIONS / ACCESSORIES:**



**NOTE:**

GFI COVERS PROVIDED ARE INTENDED FOR  
PORTABLE TOOLS OR OTHER PORTABLE  
EQUIPMENT CONNECTED TO THE OUTLET  
WHEN ATTENDED.  
WET LOCATION LISTED WHEN COVER IS  
CLOSED.

**RECEPTACLE OPTION**

Catalog No.: 907HR

Description: POLE - Aluminum Straight 4" Dia. x 8' w/Hinged Base

Drawn by: Bob Mc Date: 4/15/14 File Name: 907HR

SCALE: NONE - DO NOT SCALE DRAWING

This print contains confidential information  
which is the property of BEGA/US.  
By accepting this information, the  
borrower agrees that it will not be used  
for any other purpose other than that  
which is was loaned.

**BEGA**

1000 Bega Way  
Carpinteria, Ca. 93013  
(805) 684-0533