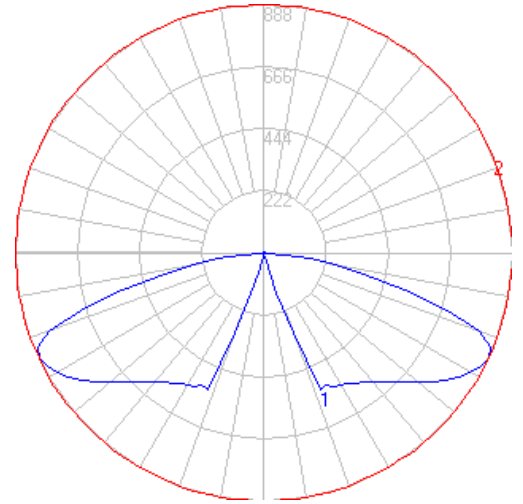


# BEGA

Photometric Filename: 88863\_1.IES

TEST: BE\_88863\_1  
 TEST LAB: BEGA  
 DATE: 11/3/2015  
 LUMINAIRE: 88 863 Luminaire  
 LAMP: 31W LED



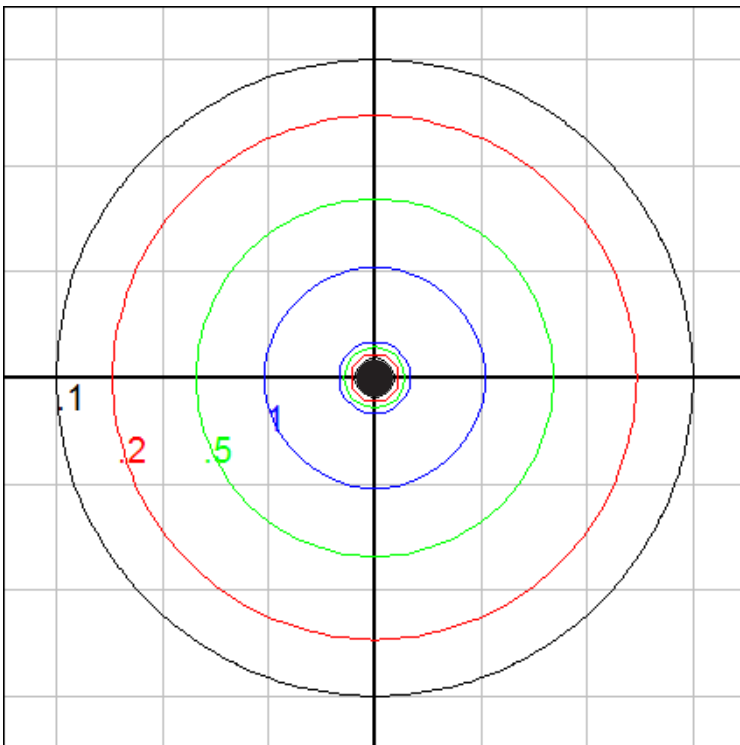
### Characteristics

IES Classification	Type V
Longitudinal Classification	Very Short
Lumens Per Lamp	N.A. (absolute)
Total Lamp Lumens	N.A. (absolute)
Luminaire Lumens	3370
Downward Total Efficiency	N.A.
Total Luminaire Efficiency	N.A.
Luminaire Efficacy Rating (LER)	94
Total Luminaire Watts	36
Ballast Factor	1.00
Upward Waste Light Ratio	0.00
Max. Cd.	887.6 (360H, 65V)
Max. Cd. (<90 Vert.)	887.6 (360H, 65V)
Max. Cd. (At 90 Deg. Vert.)	0 (0.0%Lum)
Max. Cd. (80 to <90 Deg. Vert.)	254.9 (7.6%Lum)
Cutoff Classification (deprecated)	N.A. (absolute)

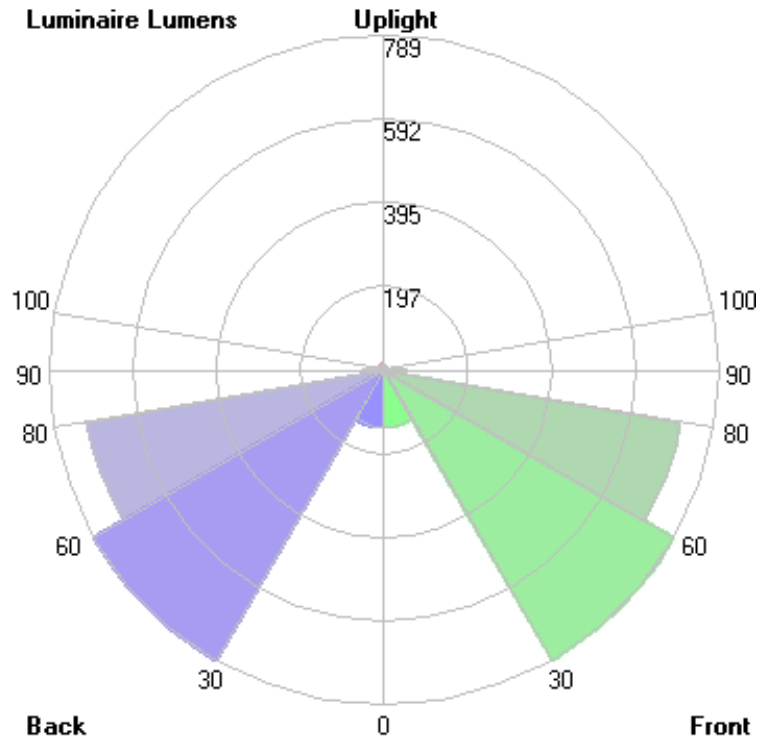
### Lum. Classification System (LCS)

LCS Zone	Lumens	%Lamp	%Lum
FL (0-30)	135.2	N.A.	4.0
FM (30-60)	789.5	N.A.	23.4
FH (60-80)	708.9	N.A.	21.0
FVH (80-90)	51.4	N.A.	1.5
BL (0-30)	135.2	N.A.	4.0
BM (30-60)	789.5	N.A.	23.4
BH (60-80)	708.9	N.A.	21.0
BVH (80-90)	51.4	N.A.	1.5
UL (90-100)	0.0	N.A.	0.0
UH (100-180)	0.0	N.A.	0.0
<b>Total</b>	<b>3370.0</b>	<b>N.A.</b>	<b>100.0</b>

**BUG Rating B2-U0-G1**



Grid Spacing = 15 ft.

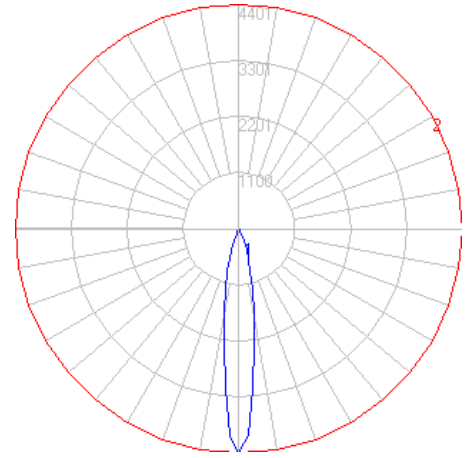


In the interest of product improvement, BEGA reserves the right to make technical changes without notice.

# BEGA

Photometric Filename: 88863\_2.IES

TEST: BE\_88863\_2  
 TEST LAB: BEGA  
 DATE: 2/14/2017  
 LUMINAIRE: 88 863 Floodlight  
 LAMP: 5.7W LED

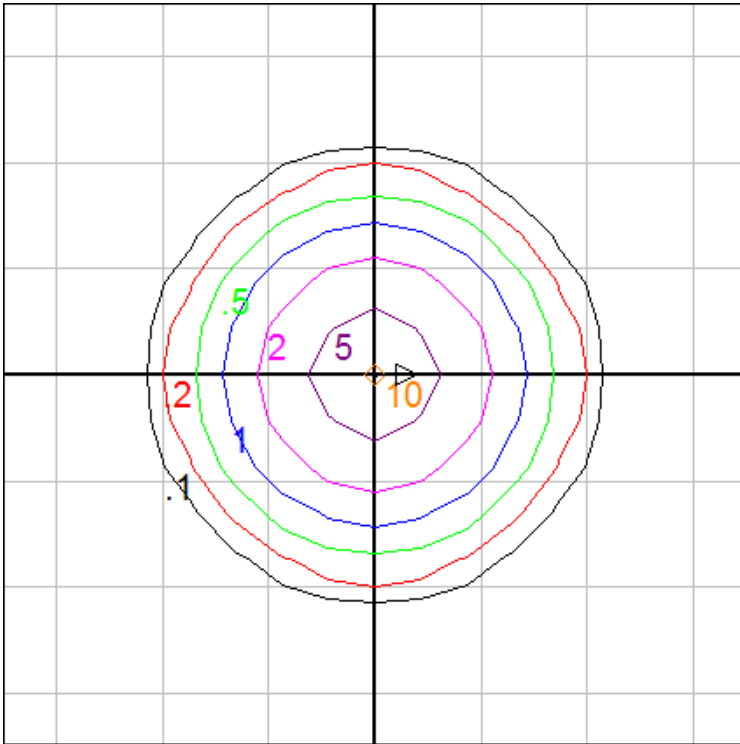


### Characteristics

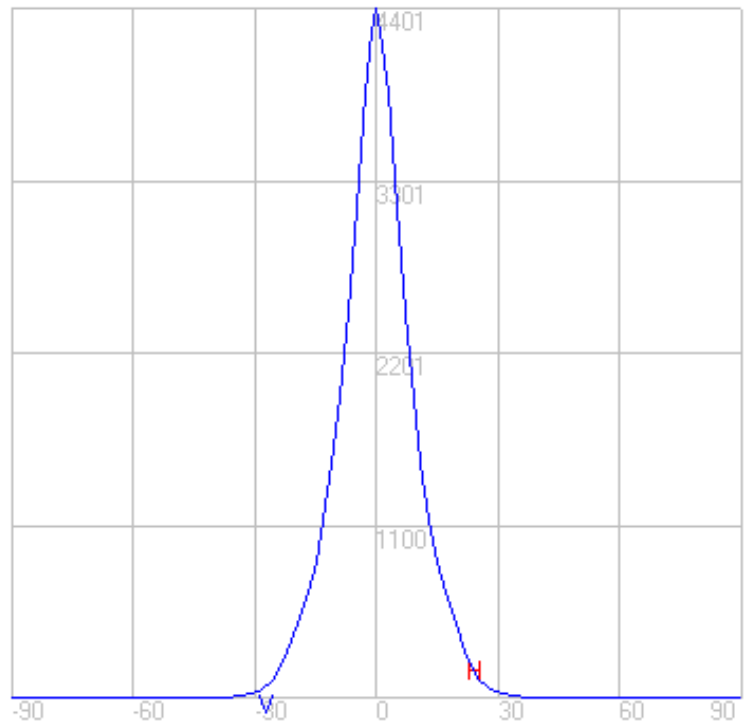
NEMA Type	3 H x 3 V
Maximum Candela	4401.2
Maximum Candela Angle	0 H 0 V
Horizontal Beam Angle (50%)	15.9
Vertical Beam Angle (50%)	15.9
Horizontal Field Angle (10%)	40.1
Vertical Field Angle (10%)	40.1
Lumens Per Lamp	N.A. (absolute)
Total Lamp Lumens	N.A. (absolute)
Beam Lumens	170
Beam Efficiency	N.A.
Field Lumens	501
Field Efficiency	N.A.
Spill Lumens	80
Luminaire Lumens	581
Total Efficiency	N.A.
Total Luminaire Watts	7
Ballast Factor	1.00

### Zonal Lumen Summary

Zone	Lumens
0-10	253.66
10-20	248.87
20-30	71.78
30-40	7.27
40-50	1.26
50-60	0.20
60-70	0.09
70-80	0.00
80-90	0.00
90-100	0.00
100-110	0.00
110-120	0.00
120-130	0.00
130-140	0.00
140-150	0.00
150-160	0.00
160-170	0.00
170-180	0.00



Floodlight Setback = 20 ft. Grid Spacing = 5 ft.



In the interest of product improvement, BEGA reserves the right to make technical changes without notice.