

Tools Required:
 4mm hex key
 5mm hex key
 8mm hex key
 Special tool (provided)



Dimensions

- A:** 6-5/8"
- B:** 23-5/8"
- C:** 177"
- D:** 31-1/2 "



Protection Class: IP 65

Weight: 84.0 lbs.

Notice to Installer for 88 863:

1. See page 2 for specific product safety warnings.
2. Luminaire is rated for direct burial installations.
3. Consult structural engineer and local codes for burial and foundation size and specs.
4. Proper drainage below and around the buried portion of the luminaire **MUST** be provided. Failure to do so may void warranty.
5. Wet location listing does not imply suitability for exposure to standing water for long periods of time.
6. Fixture may be damaged if connected to conduit systems that contain water - Article 300-5G of the National Electric Code requires that "Conduits or raceways through which moisture may contact energized live parts shall be sealed or plugged at either or both ends."
7. LEDs are high-quality electronic components! Please avoid touching the light output opening of the LED directly during installation.

NOTE: Consult engineer and local codes for direct burial specifications and details.

88 863 installation:

1. Pull supply wiring to a length where splices can be seen and made through the access door.
2. Route supply wiring through the mounting base and install fixture into ground (Figure 1). **NOTE: SIZE OF THE FOUNDATION REQUIRED TO SET THE UNIT IN CONCRETE MUST BE DETERMINED AT SITE BY STRUCTURAL ENGINEER.**
3. Use special tool provided to unlock the access door lock and remove access door. Route the luminaire wiring down and out the hand hold for connections to be made later.
4. Make supply wiring and luminaire wiring connections inside the luminaire:
 MAIN VOLTAGE SUPPLY WIRE TO BLACK LUMINAIRE WIRE
 NEUTRAL (COMMON) SUPPLY WIRE TO WHITE LUMINAIRE WIRE
 GREEN GROUND WIRE TO GREEN LUMINAIRE WIRE
 Dimming (if applicable):
 DIMMING CONTROL WIRE (+) TO POSITIVE DRIVER DIM CONTROL WIRE
 DIMMING CONTROL WIRE (-) TO NEGATIVE DRIVER DIM CONTROL WIRE.
5. Aim and face floodlight to desired location before installing the pole to insure that the floodlight is aimed to application purposes. Floodlight angle can be adjusted from 0° to 30° and can be rotated by 360° around the vertical axis of the fixture (Figures 2 & 3).
6. Install luminaire head and secure into place by tightening set screw (Figure 3).
7. Replace luminaire head and lock.

Figure 1: Diagram only - Not suitable for construction

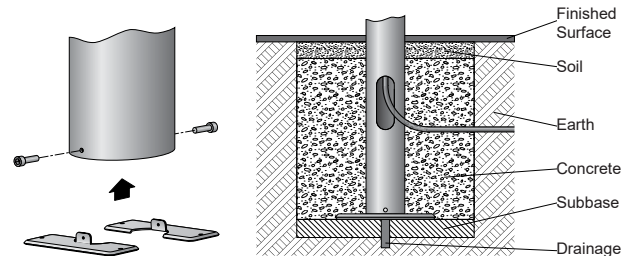


Figure 2: Floodlight Installation

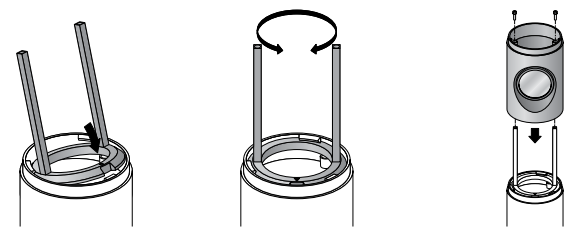


Figure 3: Floodlight adjustability and head installation

Relamping/Maintenance

No relamping required.

Lamp: 31W LED
Floodlight: 5.7W LED

Accessories

Please refer to the appropriate accessory installation sheet for further instruction when applicable.

- 10 047** Floodlight Round Spread Lens
- 10 016** Floodlight Flat Beam Spread Lens

Replacement Parts

Description	Part No
Luminaire Diffuser	150375.7
Luminaire Gasket	831248
Luminaire Driver	76004-02
Luminaire LED (3000K)	LED-0389/830
Luminaire LED (4000K)	LED-0389/840
Floodlight Diffuser	141023
Floodlight Gasket	831434-1
Floodlight Driver	76068
Floodlight LED (3000K)	LED-0438/930
Floodlight LED (4000K)	LED-0438/940

In the interest of product improvement, BEGA reserves the right to make technical changes without notice.

Product Safety Warnings:

CAUTION- RISK OF FIRE. THIS PRODUCT MUST BE INSTALLED IN ACCORDANCE WITH THE APPLICABLE INSTALLATION CODE BY A PERSON FAMILIAR WITH THE CONSTRUCTION AND OPERATION OF THE PRODUCT AND THE HAZARDS INVOLVED.

SUITABLE FOR WET LOCATIONS.

MIN 90°C SUPPLY CONDUCTORS.

ATTENTION- RISQUE D'INCENDIE. CE PRODUIT DOIT ÊTRE INSTALLÉ SELON LE CODE D'INSTALLATION PERTINENT, PAR UNE PERSONNE QUI CONNAÎT BIEN LE PRODUIT ET SON FONCTIONNEMENT AINSI QUE LES RISQUES INHÉRENTS.

CONVIENT AUX EMPLACEMENTS MOUILLÉS.

LES FILS D'ALIMENTATION 90°C MIN.
