

Application

In-grade luminaire to illuminate ground surfaces. Equipped with two 60° light apertures in opposite directions. Designed to bear pressure loads up to 2200 lbs. from vehicles with pneumatic tires. The luminaires must not be used for traffic lanes where they are subject to horizontal pressure from vehicles braking, accelerating and changing direction.

Materials

Borosilicate glass
 Marine grade, copper free (≤0.3% copper content) A360.0 aluminum alloy
 High temperature silicone gasket
 Stainless steel screw clamps

NRTL listed to North American Standards, suitable for wet locations
 Protection class IP 67

Weight: 3.0lbs.

Electrical

Operating voltage	24VDC (remote power supply req.)
Minimum start temperature	-40° C
LED module wattage	2.2W
System wattage	3.0W
Controllability	Non-Dimming
Color rendering index	Ra > 80
Luminaire lumens	51 lm
LED service life (L70)	60000 hrs

LED color temperature

- 4000K (K4)
- 3500K (K35)
- 3000K (K3)
- 2700K (K27)

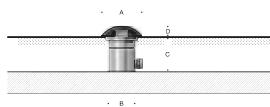
BEGA can supply you with suitable LED replacement modules for up to 20 years after the purchase of LED luminaires - see website for details

Finish

All BEGA standard finishes are matte, textured powder coat with minimum 3 mil thickness. BEGA Unidure® finish, a fluoropolymer technology, provides superior fade protection in Black, Bronze, and Silver. BEGA standard White is a super durable polyester powder. Optionally available RAL and custom color finishes provided in either polyester powder or liquid paint.

Available colors

- | | |
|--------------|--------------|
| Black (BLK) | Bronze (BRZ) |
| Silver (SLV) | White (WHT) |
| RAL: | CUS: |



In-grade luminaire · Twin 60° ports • 24V DC

	LED	A	B	C	D
B88674	2.2W	4 ³ / ₄	3 ¹ / ₂	3 ³ / ₄	1 ¹ / ₈

Type:

BEGA Product:

Project:

Modified:

Available options

- | | |
|-----|------------------------|
| CUS | Custom finish |
| FRO | Frosted lens |
| FSC | Fusing |
| MGU | Marine grade undercoat |
| RAL | RAL finish |

Available accessories

- | | |
|--------|----------------------------------|
| B19580 | Remote driver box · Static white |
| B19591 | Remote driver box · Static white |

See individual accessory spec sheet for details.

