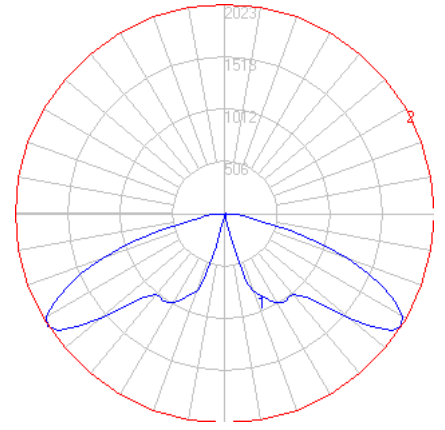


BEGA

Photometric Filename: 88070_1.IES

TEST: BE_88070_1
 TEST LAB: BEGA
 DATE: 08/14/2015
 LUMINAIRE: 88 070 Luminaire
 LAMP: 47.7W LED



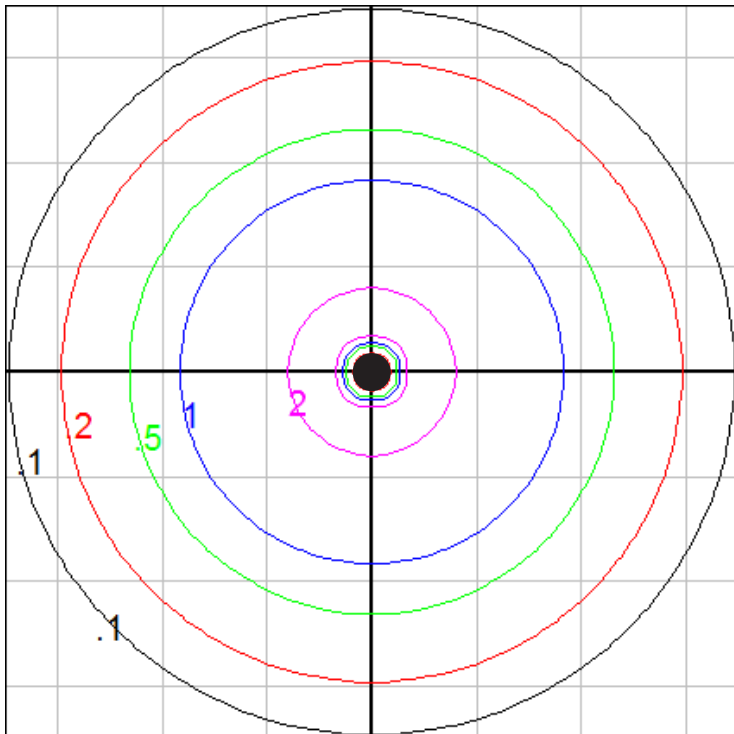
Characteristics

IES Classification	Type V
Longitudinal Classification	Short
Lumens Per Lamp	N.A. (absolute)
Total Lamp Lumens	N.A. (absolute)
Luminaire Lumens	6343
Downward Total Efficiency	N.A.
Total Luminaire Efficiency	N.A.
Luminaire Efficacy Rating (LER)	108
Total Luminaire Watts	59
Ballast Factor	1.00
Upward Waste Light Ratio	0.00
Max. Cd.	2023.4 (0H, 57.5V)
Max. Cd. (<90 Vert.)	2023.4 (0H, 57.5V)
Max. Cd. (At 90 Deg. Vert.)	0 (0.0%Lum)
Max. Cd. (80 to <90 Deg. Vert.)	259.2 (4.1%Lum)
Cutoff Classification (deprecated)	N.A. (absolute)

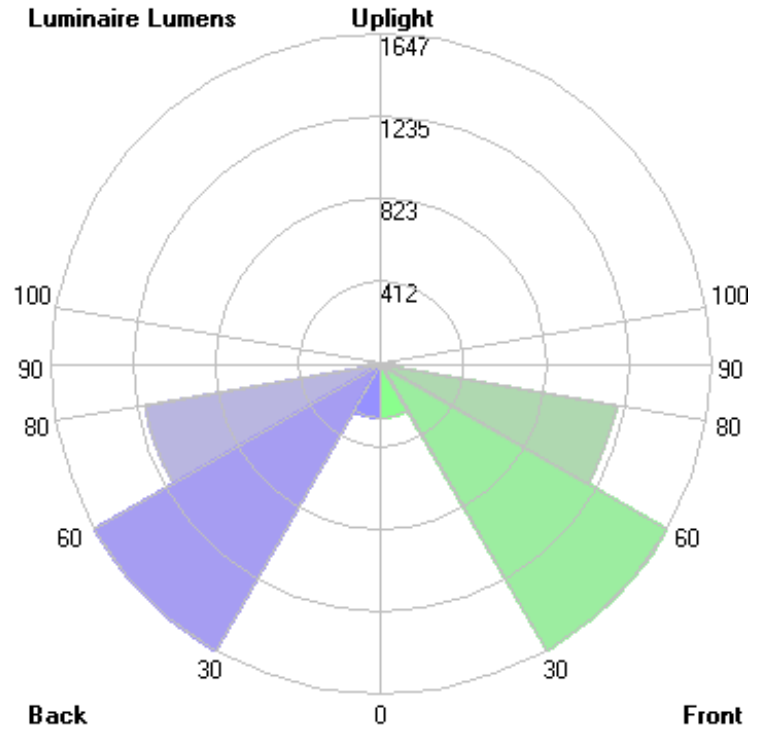
Lum. Classification System (LCS)

LCS Zone	Lumens	%Lamp	%Lum
FL (0-30)	270.5	N.A.	4.3
FM (30-60)	1647.0	N.A.	26.0
FH (60-80)	1190.1	N.A.	18.8
FVH (80-90)	63.9	N.A.	1.0
BL (0-30)	270.5	N.A.	4.3
BM (30-60)	1647.0	N.A.	26.0
BH (60-80)	1190.1	N.A.	18.8
BVH (80-90)	63.9	N.A.	1.0
UL (90-100)	0.0	N.A.	0.0
UH (100-180)	0.0	N.A.	0.0
Total	6343.0	N.A.	100.0

BUG Rating B3-U0-G1



Grid Spacing = 15 ft.

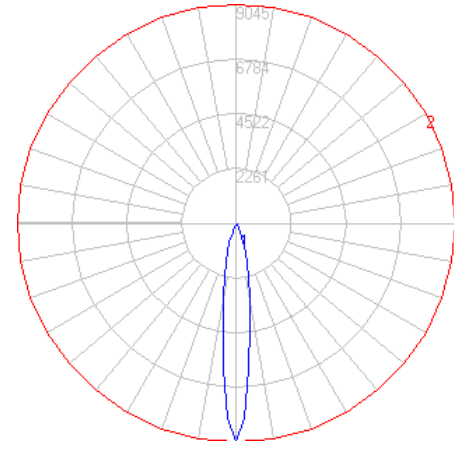


In the interest of product improvement, BEGA reserves the right to make technical changes without notice.

BEGA

Photometric Filename: 88063_2.IES

TEST: BE_88063_2
 TEST LAB: BEGA
 DATE: 08/17/2015
 LUMINAIRE: 88 063 Floodlight
 LAMP: 19.3W LED

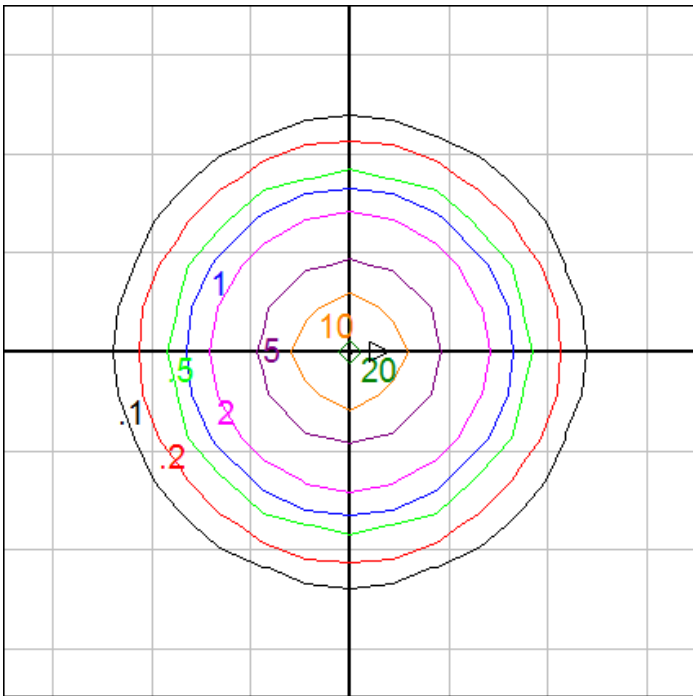


Characteristics

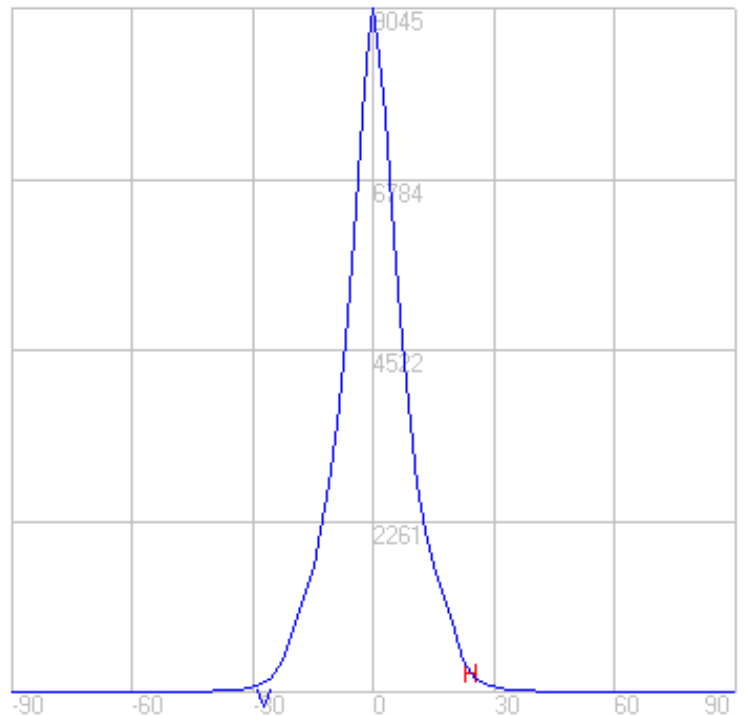
NEMA Type	3 H x 3 V
Maximum Candela	9044.9
Maximum Candela Angle	0 H 0 V
Horizontal Beam Angle (50%)	14.4
Vertical Beam Angle (50%)	14.4
Horizontal Field Angle (10%)	39.1
Vertical Field Angle (10%)	39.1
Lumens Per Lamp	N.A. (absolute)
Total Lamp Lumens	N.A. (absolute)
Beam Lumens	284
Beam Efficiency	N.A.
Field Lumens	933
Field Efficiency	N.A.
Spill Lumens	168
Luminaire Lumens	1101
Total Efficiency	N.A.
Total Luminaire Watts	24

Zonal Lumen Summary

Zone	Lumens
0-10	485.09
10-20	474.08
20-30	125.28
30-40	17.69
40-50	2.99
50-60	0.29
60-70	0.06
70-80	0.00
80-90	0.00
90-100	0.00
100-110	0.00
110-120	0.00
120-130	0.00
130-140	0.00
140-150	0.00
150-160	0.00
160-170	0.00
170-180	0.00



Floodlight Setback = 20ft Grid Spacing = 5 ft.



In the interest of product improvement, BEGA reserves the right to make technical changes without notice.