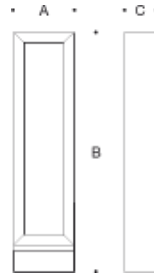


**Tools Required:**

- Adjustable wrench
- 1/2" nut driver
- 4mm hex key
- 5mm hex key



**Dimensions**

- A:** 10-3/8 "
- B:** 43-7/8 "
- C:** 5-1/4 "



**Protection Class:** IP 65

**Weight:** 28.7 lbs.

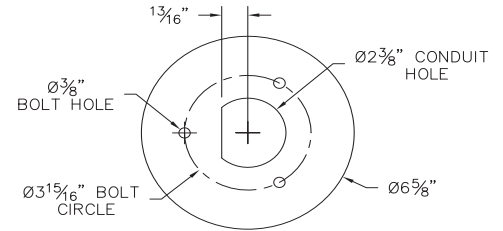
**Notice to Installer for 88 062:**

1. See page 3 for specific product safety warnings.
2. Fixture may be damaged if connected to conduit systems that contain water - Article 300-5G of the National Electric Code requires that "Conduits or raceways through which moisture may contact energized live parts shall be sealed or plugged at either or both ends."
3. 79 817 anchorage kit (included) must be installed in concrete pad/foundation.
4. It is recommended that when installing in planting areas the bollard base be slightly elevated to avoid prolonged submerging during heavy rains.
5. Wet location listing does not imply suitability for exposure to standing water for long periods of time.
6. LEDs are high-quality electronic components! Please avoid touching the light output opening of the LED directly during installation.

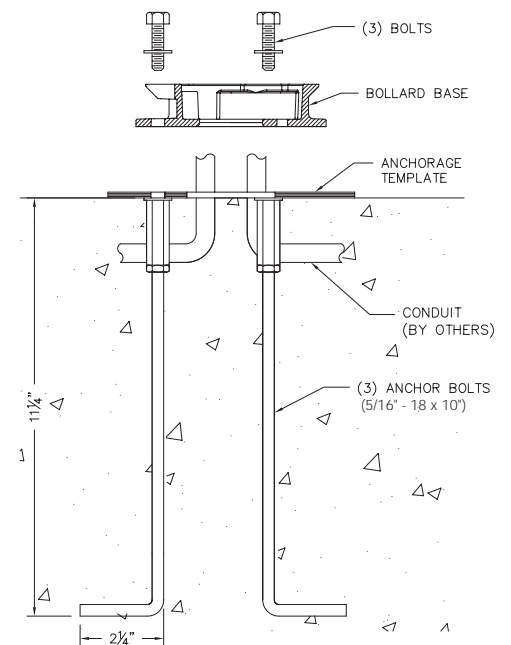
**79 817 anchorage installation:**

1. Provide means to bring supply wiring to the bollard in accordance with local code. The template has a 2-3/8" conduit hole for conduit entry.
2. Assemble anchorage kit. Unscrew the (3) hex bolts from the female couplers. Remove each hex bolt and washer. Align each anchor bolt with the hole in the template. Attach each anchor bolt to the template by replacing the washer and hex bolt and tightening.
3. Determine the finished grade for the application. Use leveling hardware to adjust template to desired finished height after pouring.
4. Install anchorage kit using either method:
  - A. Attach template to forming or cross bracing using the (2) nail holes provided in the template. Level template properly. Pour concrete.
  - B. Insert anchorage assembly into poured concrete. Concrete must be vibrated to ensure proper anchorage setting. Level template properly.

**Figure 1**



**Figure 2: Anchorage Assembly**



**Relamping/Maintenance**

No relamping required.

**Accessories**

Please refer to the appropriate accessory installation sheet for further instruction when applicable.

Anchorage 79 817

**Replacement Parts**

Description	Part No
Lens	Consult Factory
Reflector (Rect.)	761296
Reflector (Spher.)	761295
Driver (120V-277V)	75985-01
LED Module (3000K)	LED-0313/930
LED Module (4000K)	LED-0313/940

**Lamp:** 17.9W LED

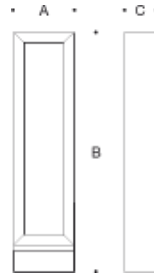
In the interest of product improvement, BEGA reserves the right to make technical changes without notice.

**Tools Required:**

- Adjustable wrench
- 1/2" nut driver
- 3mm hex key
- 4mm hex key
- 5mm hex key

**Protection Class:** IP 65

**Weight:** 28.7 lbs.



**Dimensions**

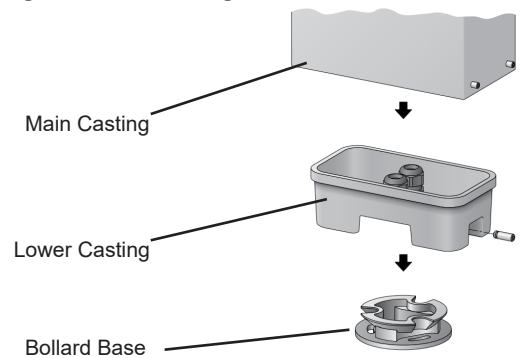
- A:** 10-3/8 "
- B:** 43-7/8 "
- C:** 5-1/4 "



**88 062 installation:**

1. Remove (3) hex bolts and washers, once anchorage is set.
2. Leave template in place to provide a smooth, flat surface to mount the base.
3. Loosen (4) 4mm set screws on lower side of fixture main casting to remove the main casting from lower casting. NOTE: The lower casting resides inside the main casting and connects directly to the bollard base.
4. Loosen the 5mm set screw on the lower casting and remove the bollard base.
5. Align bollard base holes with anchorage holes.
6. Bolt the bollard base to the anchorage kit using the (3) hex bolts and washers.
7. Make supply wiring connections to wire leads from driver inside the fixture  
 MAIN VOLTAGE SUPPLY WIRE TO BLACK LUMINAIRE WIRE;  
 NEUTRAL (COMMON) SUPPLY WIRE TO WHITE LUMINAIRE WIRE;  
 GREEN GROUND WIRE TO GREEN LUMINAIRE WIRE.
- Dimming (if applicable):  
 DIMMING CONTROL WIRE (+) TO POSITIVE DRIVER DIM CONTROL WIRE  
 DIMMING CONTROL WIRE (-) TO NEGATIVE DRIVER DIM CONTROL WIRE
8. Place the lower casting over the bollard base so that the (3) notches in the bollard base align with the lower casting and orient correctly. Attach together by tightening the 5mm set screw.
9. Secure the bollard by tightening the (4) 4mm set screws at the base of the main casting.

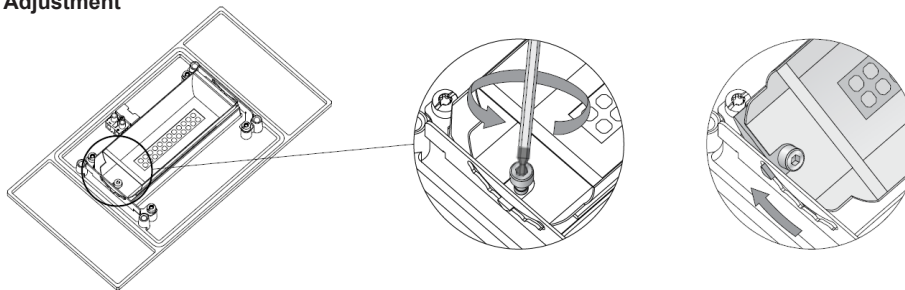
**Figure 3: Generic Image**



**88 062 adjustment:**

1. Loosen (4) 4mm hex head screws on the underside of the top of luminaire and remove top casting with LED's attached.
2. Unscrew (2) 3mm hex head screws on either side of LED.
3. Adjust to 0, 15, or 30 degrees and screw in 3mm hex head screws.
4. Replace top casting assembly and tighten (4) hex head screws on underside of top casting.

**Figure 4: LED Adjustment**



**Relamping/Maintenance**

No relamping required.

**Accessories**

Please refer to the appropriate accessory installation sheet for further instruction when applicable.

Anchorage 79 817

**Replacement Parts**

Description	Part No
Lens	Consult Factory
Reflector (Rect.)	761296
Reflector (Spher.)	761295
Driver (120V-277V)	75985-01
LED (3000K) Module	LED-0313/930
LED (4000K) Module	LED-0313/940

**Lamp:** 17.9W LED

In the interest of product improvement, BEGA reserves the right to make technical changes without notice.

## Product Safety Warnings:

**THIS PRODUCT MUST BE INSTALLED IN ACCORDANCE WITH THE APPLICABLE INSTALLATION CODE BY A PERSON FAMILIAR WITH THE CONSTRUCTION AND OPERATION OF THE PRODUCT AND THE HAZARDS INVOLVED. SUITABLE FOR WET LOCATIONS.**

**MIN 90°C SUPPLY CONDUCTORS.**

**CE PRODUIT DOIT ÊTRE INSTALLÉ SELON LE CODE D'INSTALLATION PERTINENT, PAR UNE PERSONNE QUI CONNAÎT BIEN LE PRODUIT ET SON FONCTIONNEMENT AINSI QUE LES RISQUES INHÉRENTS. CONVIENT AUX EMPLACEMENTS MOUILLÉS.**

**LES FILS D'ALIMENTATION 90°C MIN.**