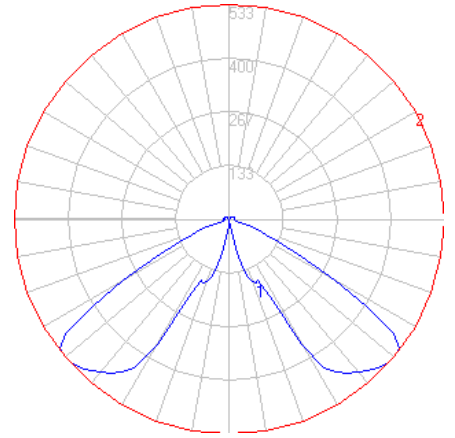


BEGA

Photometric Filename: 88061.ies

TEST: BE_88061
 TEST LAB: BEGA
 DATE: 7/11/2017
 LUMINAIRE: 88 061
 LAMP: 16.5W LED



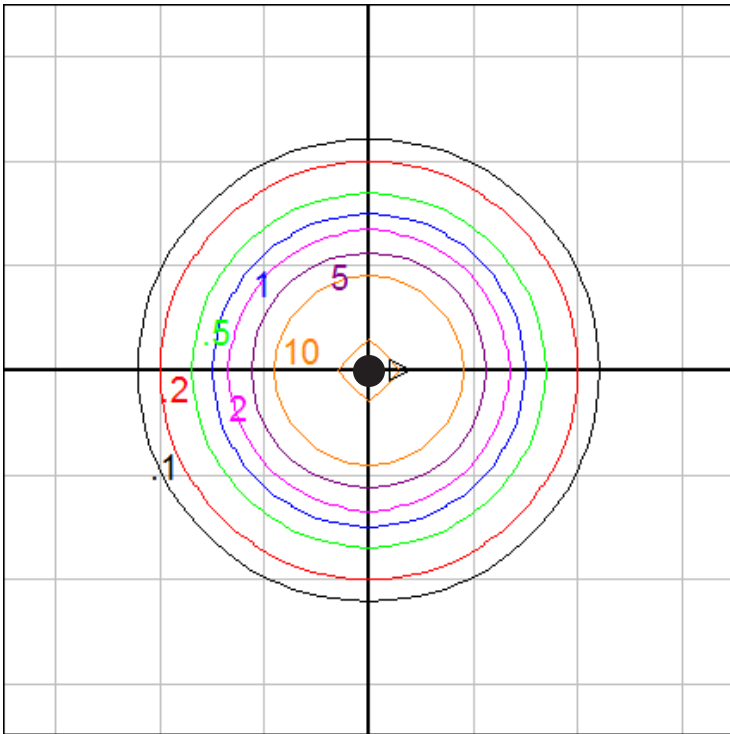
Characteristics

IES Classification	Type V
Longitudinal Classification	Short
Lumens Per Lamp	N.A. (absolute)
Total Lamp Lumens	N.A. (absolute)
Luminaire Lumens	1481
Downward Total Efficiency	N.A.
Total Luminaire Efficiency	N.A.
Luminaire Efficacy Rating (LER)	78
Total Luminaire Watts	19
Ballast Factor	1.00
Upward Waste Light Ratio	0.03
Max. Cd.	533.4 (0H, 50V)
Max. Cd. (<90 Vert.)	533.4 (0H, 50V)
Max. Cd. (At 90 Deg. Vert.)	13.5 (0.9%Lum)
Max. Cd. (80 to <90 Deg. Vert.)	13.4 (0.9%Lum)
Cutoff Classification (deprecated)	N.A. (absolute)

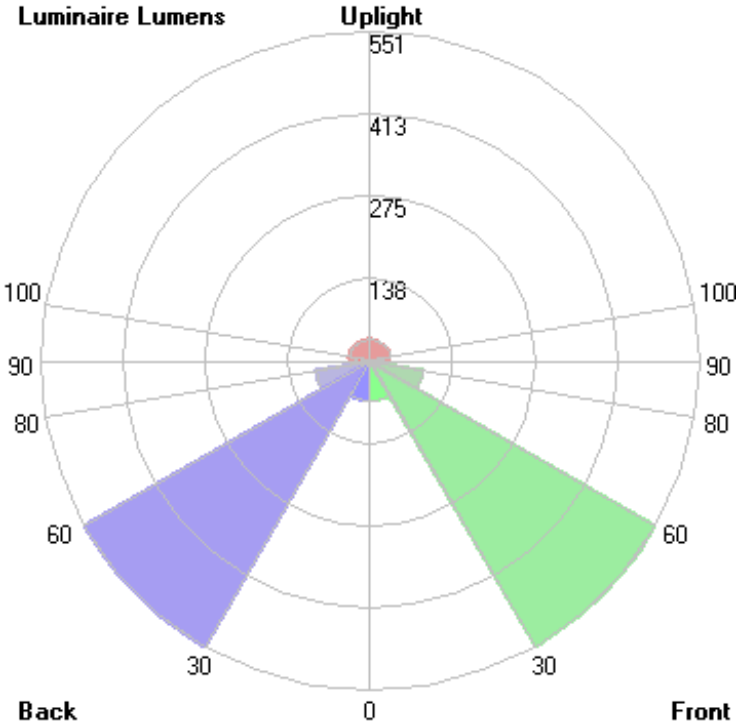
Lum. Classification System (LCS)

LCS Zone	Lumens	%Lamp	%Lum
FL (0-30)	66.7	N.A.	4.5
FM (30-60)	550.6	N.A.	37.2
FH (60-80)	90.7	N.A.	6.1
FVH (80-90)	7.3	N.A.	0.5
BL (0-30)	66.7	N.A.	4.5
BM (30-60)	550.6	N.A.	37.2
BH (60-80)	90.7	N.A.	6.1
BVH (80-90)	7.3	N.A.	0.5
UL (90-100)	14.8	N.A.	1.0
UH (100-180)	35.4	N.A.	2.4
Total	1480.8	N.A.	100.0

BUG Rating B1-U2-G0



Grid Spacing = 5 ft.



In the interest of product improvement, BEGA reserves the right to make technical changes without notice.