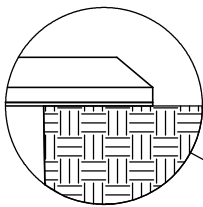
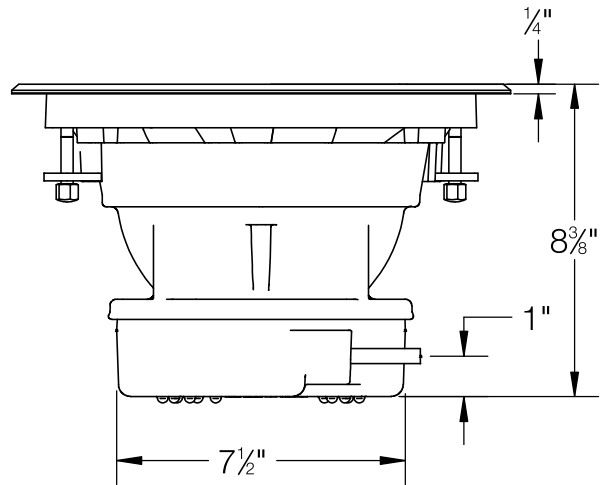
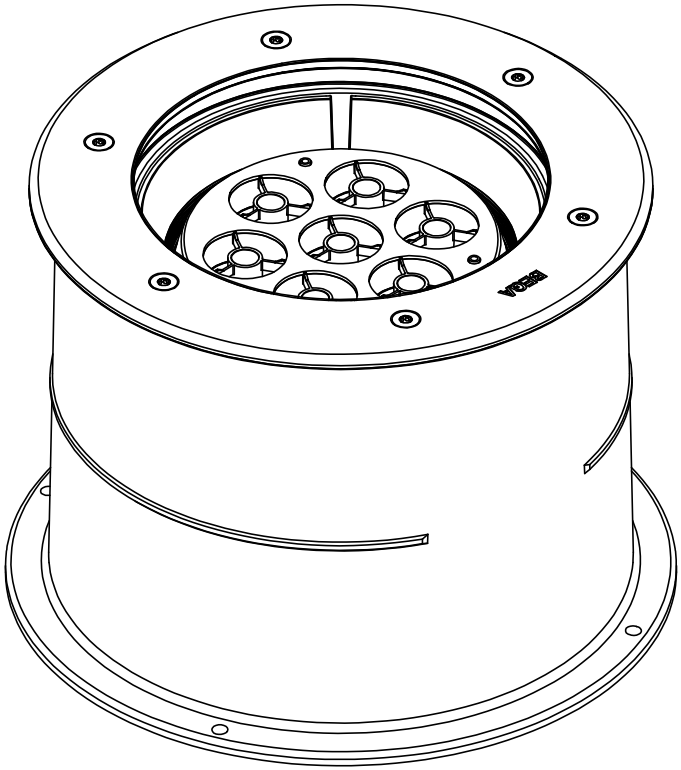
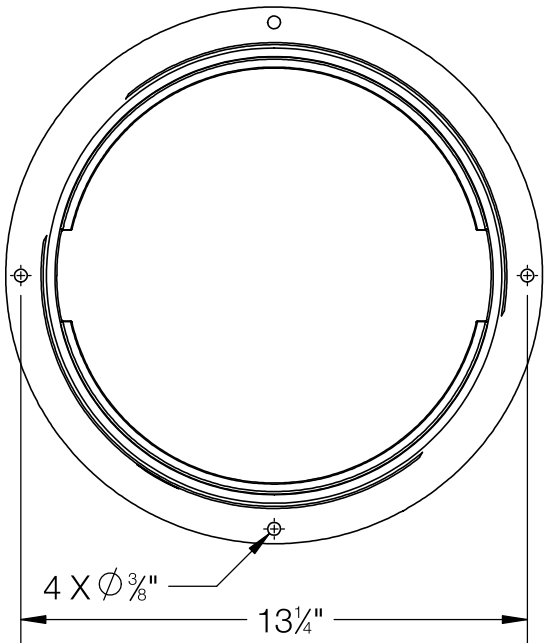
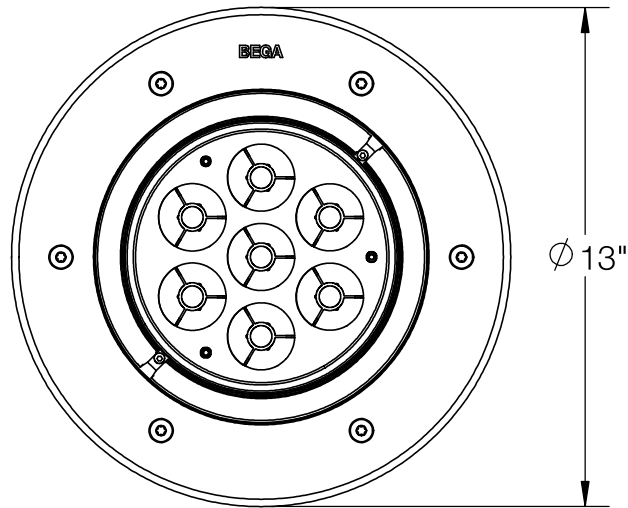
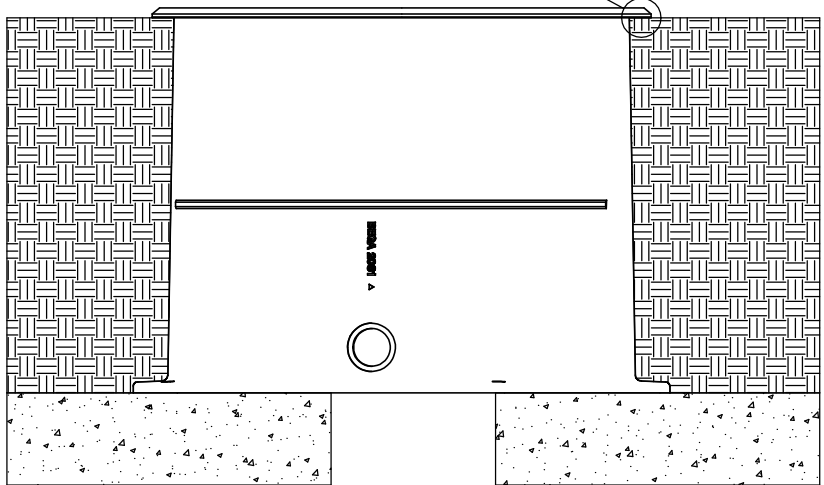
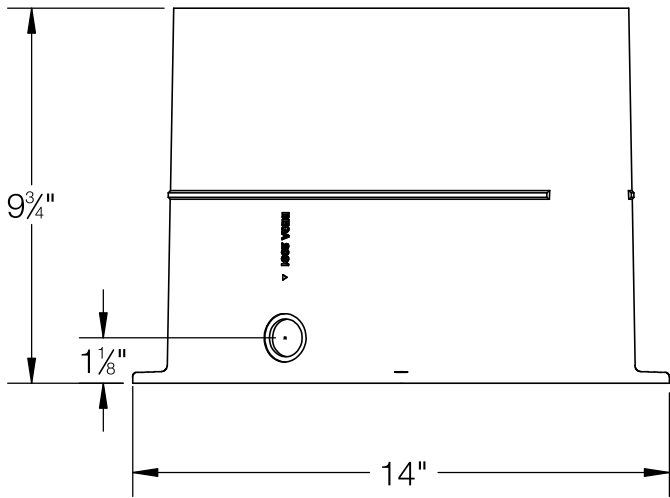


REV	CHANGED BY	DESCRIPTION	DATE



NOTE: IN-GRADE SITS FLUSH
WITH FINISHED SURFACE
CREATS SEAL



NOTES:

1. INSTALLATION SLEEVE INCLUDED
2. FIXING IS ACHIEVED BY USING THREE WEDGE SHAPED CLAMPING ELEMENTS
3. MUST SUPPLY MINIMUM OF 6" OF ADEQUATE DRAINING

BEGA

1000 BEGA Way, Carpinteria, California 93013		P (805) 684-0533 - www.bega-us.com	
APPROVED: _____ DATE: _____		DESCRIPTION: IN-GRADE LUMINAIRE - SYMMETRIC - VERY NARROW BEAM	
TYPE: _____		SIZE B	PART NO. 85043
PROPRIETARY AND CONFIDENTIAL THE INFORMATION CONTAINED IN THIS DRAWING IS THE SOLE PROPERTY OF BEGA NORTH AMERICA, INC. ANY REPRODUCTION IN PART OR AS A WHOLE WITHOUT THE WRITTEN PERMISSION OF BEGA NORTH AMERICA, INC. IS PROHIBITED.		REV -	NOT TO SCALE
		7/6/2025	SHEET 1 OF 1