

Application

A round in-grade intended for the illumination of walls, foliage, and architectural features. Designed to bear pressure loads up to 11,000 lbs. from vehicles with pneumatic tires. The luminaire must not be used for traffic lanes where it is subject to horizontal pressure from vehicles braking, accelerating, or changing direction.

Materials

- Clear safety glass
- BEGA Tricoat ®, a 3-layer finishing technology for increased corrosion protection
- Fully potted waterstopper cable
- High temperature silicone gasket
- Mechanically captive stainless steel fasteners
- Stainless steel screw clamps
- Aluminum installation housing
- BEGA Hybrid Optics®
- Silicone optic with excellent high temperature and UV stability

NRTL listed to North American Standards, suitable for wet locations  
Protection class IP 68

Weight: 30.4 lbs.

Electrical

- Operating voltage120V or 277V AC
- Minimum start temperature-10° C
- LED module wattage29.9W
- System wattage33.0W
- Controllability0-10V, TRIAC, and ELV dimmable
- Color rendering indexRa > 80
- Luminaire lumens1073lm

LED color temperature

- 4000K (K4)
- 3500K (K35)
- 3000K (K3)
- 2700K (K27)

BEGA can supply you with suitable LED replacement modules for up to 20 years after the purchase of LED luminaires - see website for details

Finish

#4 brushed stainless steel. Custom colors are not available.

Type:

BEGA Product:

Project:

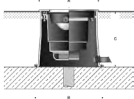
Modified:

Available options

- DALI-2Digital addressable lighting interface
- FSCFusing
- NSLNon-skid lens

Included (available for pre-shipment)

- BB84290Installation housing



In-grade luminaire · Symmetric · Very narrow beam					
	LED	β	A	B	C
B85043	29.9W	5°	13	14	9¾

