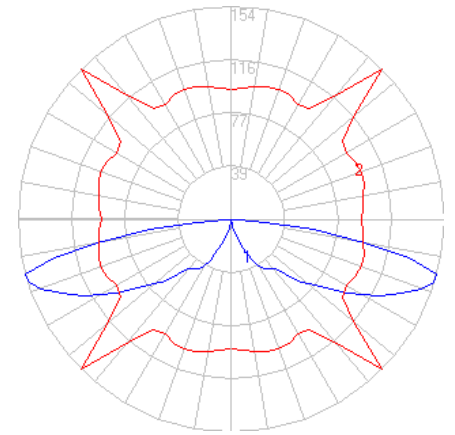


BEGA

Photometric Filename: 84690.ies

TEST: BE_84690
 TEST LAB: BEGA
 DATE: 5/24/2016
 LUMINAIRE: 84 690
 LAMP: 16.8W LED



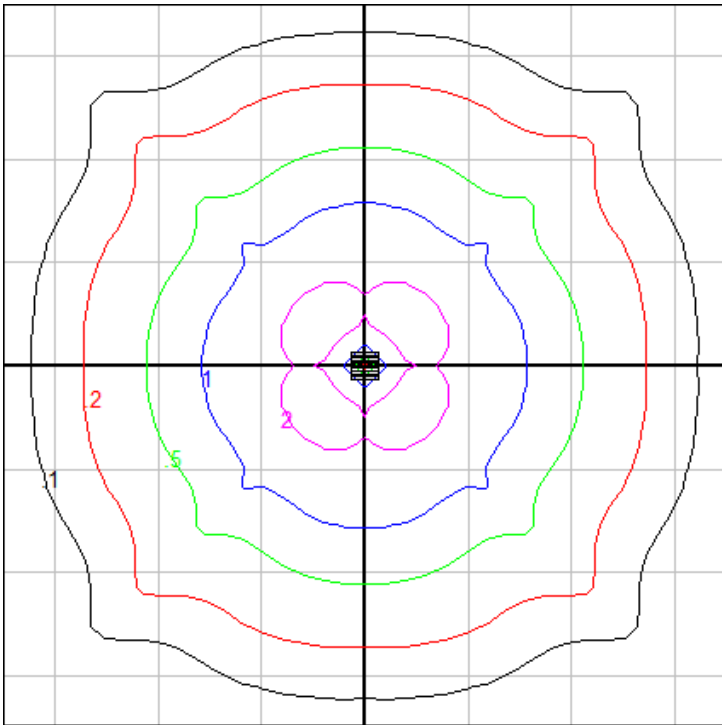
Characteristics

IES Classification	Type VS
Longitudinal Classification	Medium
Lumens Per Lamp	N.A. (absolute)
Total Lamp Lumens	N.A. (absolute)
Luminaire Lumens	388
Downward Total Efficiency	N.A.
Total Luminaire Efficiency	N.A.
Luminaire Efficacy Rating (LER)	18
Total Luminaire Watts	21
Ballast Factor	1.00
Upward Waste Light Ratio	0.00
Max. Cd.	154.2 (45H, 75V)
Max. Cd. (<90 Vert.)	154.2 (45H, 75V)
Max. Cd. (At 90 Deg. Vert.)	0 (0.0%Lum)
Max. Cd. (80 to <90 Deg. Vert.)	98 (25.3%Lum)
Cutoff Classification (deprecated)	N.A. (absolute)

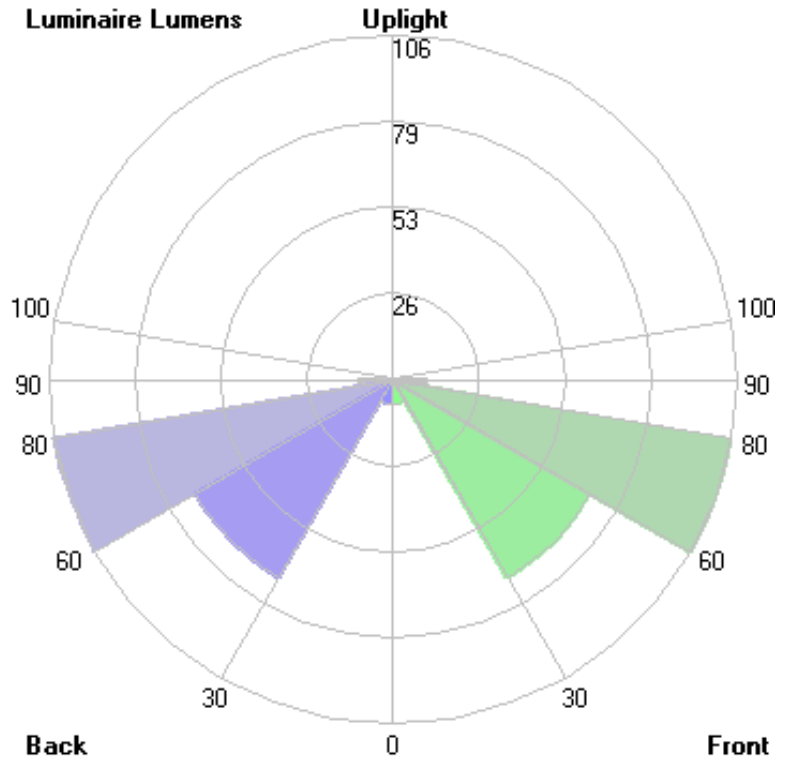
Lum. Classification System (LCS)

LCS Zone	Lumens	%Lamp	%Lum
FL (0-30)	7.7	N.A.	2.0
FM (30-60)	70.2	N.A.	18.1
FH (60-80)	105.9	N.A.	27.3
FVH(80-90)	10.3	N.A.	2.6
BL (0-30)	7.7	N.A.	2.0
BM (30-60)	70.2	N.A.	18.1
BH (60-80)	105.9	N.A.	27.3
BVH(80-90)	10.3	N.A.	2.6
UL (90-100)	0.0	N.A.	0.0
UH (100-180)	0.0	N.A.	0.0
Total	388.2	N.A.	100.0

BUG Rating B0-U0-G1



Mounting Height = 3 ft. Grid Spacing = 4 ft.
 *Using 84 002 system bollard tube



In the interest of product improvement, BEGA reserves the right to make technical changes without notice.