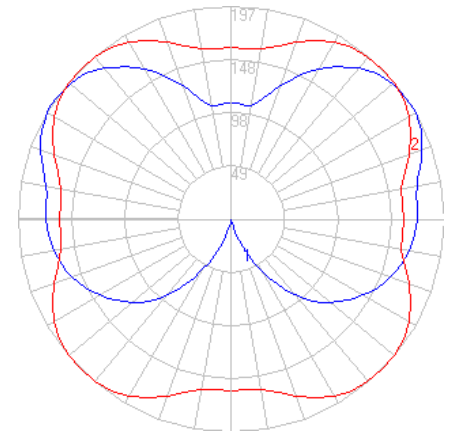


BEGA

Photometric Filename: 84681.ies

TEST: BE_84681
 TEST LAB: BEGA
 DATE: 6/3/2016
 LUMINAIRE: 84 681
 LAMP: 15.7W LED

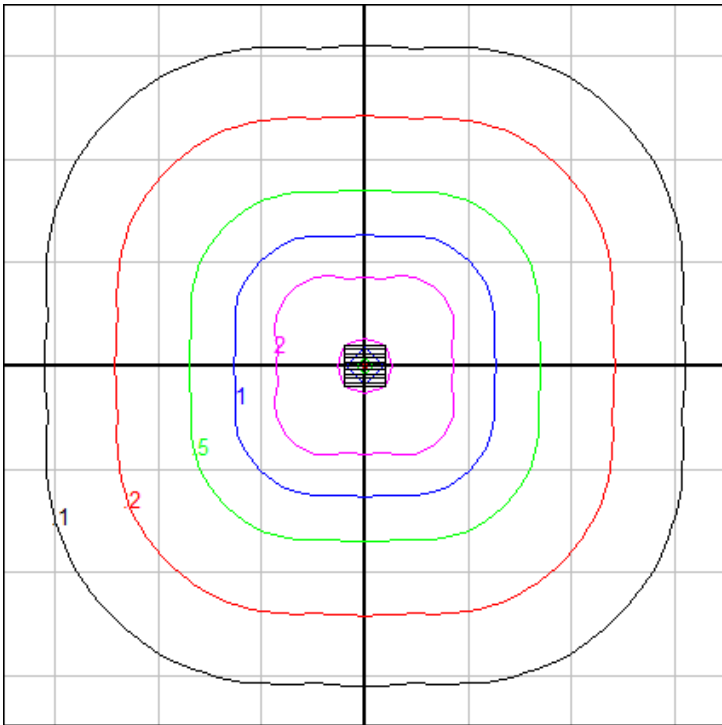


Characteristics

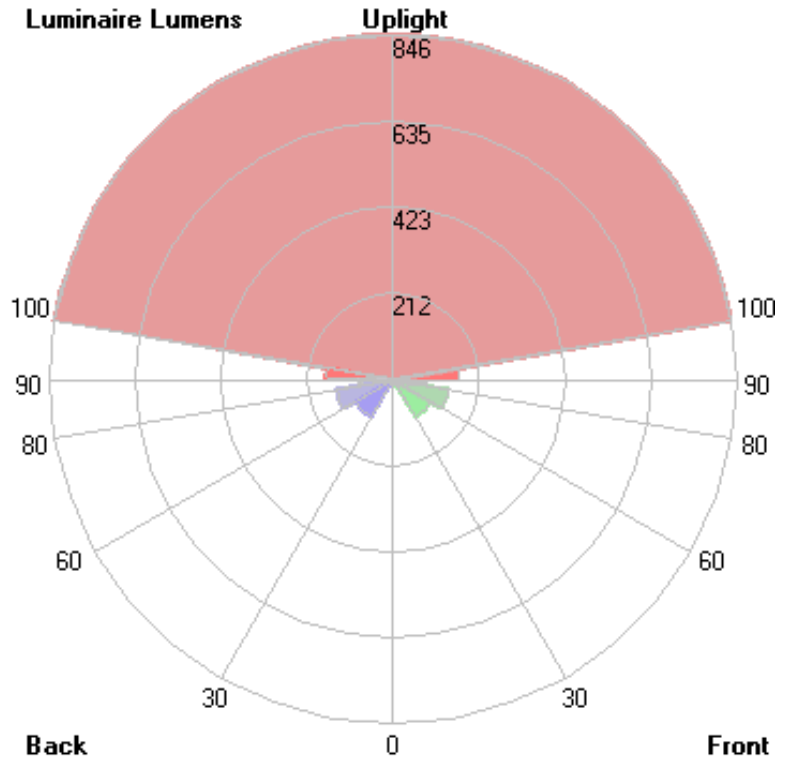
IES Classification	N.A.
Longitudinal Classification	N.A.
Lumens Per Lamp	N.A. (absolute)
Total Lamp Lumens	N.A. (absolute)
Luminaire Lumens	1688
Downward Total Efficiency	N.A.
Total Luminaire Efficiency	N.A.
Luminaire Efficacy Rating (LER)	80
Total Luminaire Watts	21
Ballast Factor	1.00
Upward Waste Light Ratio	0.60
Max. Cd.	196.9 (45H, 122.5V)
Max. Cd. (<90 Vert.)	171.2 (45H, 87.5V)
Max. Cd. (At 90 Deg. Vert.)	172.3 (10.2%Lum)
Max. Cd. (80 to <90 Deg. Vert.)	171.2 (10.1%Lum)
Cutoff Classification (deprecated)	N.A. (absolute)

Lum. Classification System (LCS)

LCS Zone	Lumens	%Lamp	%Lum
FL (0-30)	10.3	N.A.	0.6
FM (30-60)	107.9	N.A.	6.4
FH (60-80)	139.5	N.A.	8.3
FVH(80-90)	80.9	N.A.	4.8
BL (0-30)	10.3	N.A.	0.6
BM (30-60)	107.9	N.A.	6.4
BH (60-80)	139.5	N.A.	8.3
BVH(80-90)	80.9	N.A.	4.8
UL (90-100)	164.3	N.A.	9.7
UH (100-180)	846.2	N.A.	50.1
Total	1687.7	N.A.	100.0
BUG Rating	B1-U4-G1		



Mounting Height = 3.25 ft. Grid Spacing = 5 ft.
 *Using 84 003 system bollard tube



In the interest of product improvement, BEGA reserves the right to make technical changes without notice.