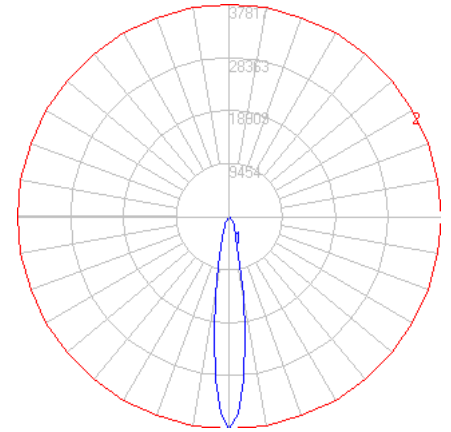


# BEGA

File: 84550\_BEGA\_IES.ies

TEST: BE\_84550\*  
 TEST LAB: BEGA  
 DATE: 09/03/2018  
 LUMINAIRE: 84 524 RGBW  
 LAMP: 85.0W LED

\*MEASURED WITH ALL RGBW ON 100%

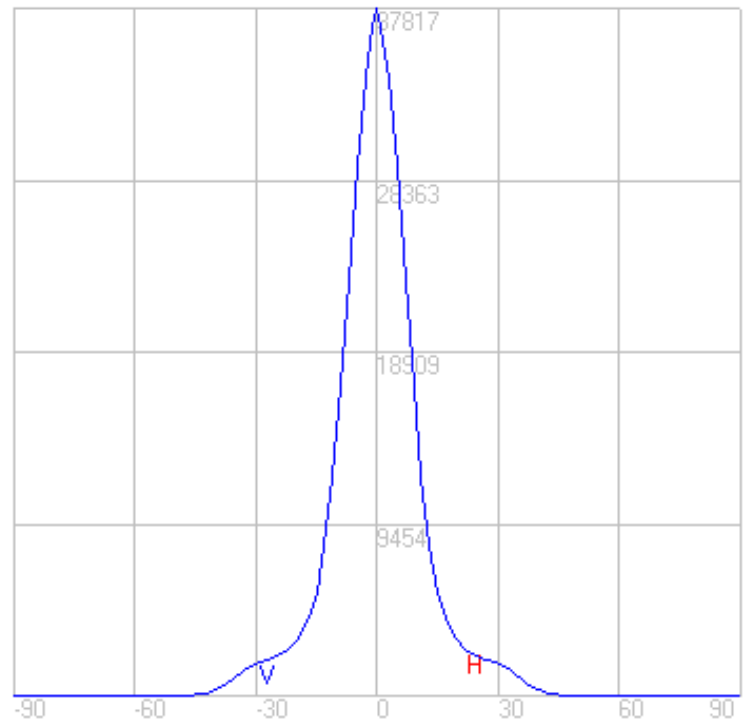
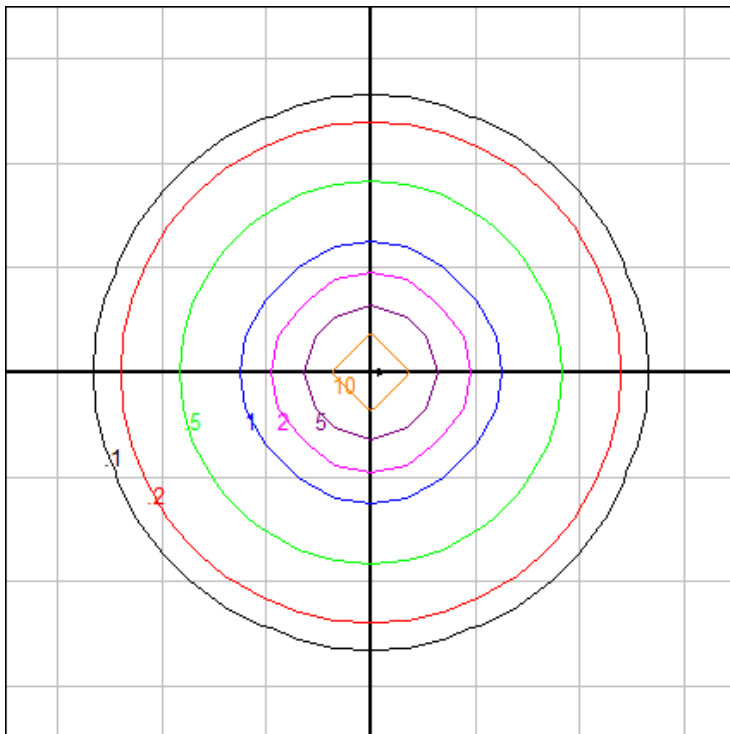


### Characteristics

NEMA Type	3 H x 3 V
Maximum Candela	37817.149
Maximum Candela Angle	0 H 0 V
Horizontal Beam Angle (50%)	16.7
Vertical Beam Angle (50%)	16.7
Horizontal Field Angle (10%)	36.2
Vertical Field Angle (10%)	36.2
Lumens Per Lamp	N.A. (absolute)
Total Lamp Lumens	N.A. (absolute)
Beam Lumens	1820
Beam Efficiency	N.A.
Field Lumens	3751
Field Efficiency	N.A.
Spill Lumens	2126
Luminaire Lumens	5878
Total Efficiency	N.A.
Total Luminaire Watts	95
Ballast Factor	1.00

### Zonal Lumen Summary

Zone	Lumens
0-10	2290.28
10-20	1765.13
20-30	1012.97
30-40	626.83
40-50	66.05
50-60	37.73
60-70	36.78
70-80	33.06
80-90	28.57
90-100	0.00
100-110	0.00
110-120	0.00
120-130	0.00
130-140	0.00
140-150	0.00
150-160	0.00
160-170	0.00
170-180	0.00



Mounting Height: 50 ft.

Grid Spacing: 15 ft.

In the interest of product improvement, BEGA reserves the right to make technical changes without notice.

BEGA 1000 Bega Way, Carpinteria, CA 93013 (805)684-0533 Fax (805)566-9474 www.bega-us.com © Copyright BEGA-US 2021

4/29/2021