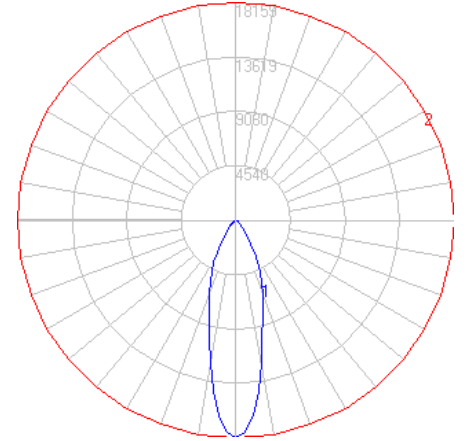


BEGA

Photometric Filename: 84548K4.ies

TEST: BE_84548K4
 TEST LAB: BEGA
 DATE: 2/20/2018
 LUMINAIRE: 84548
 LAMP: 71.1W LED

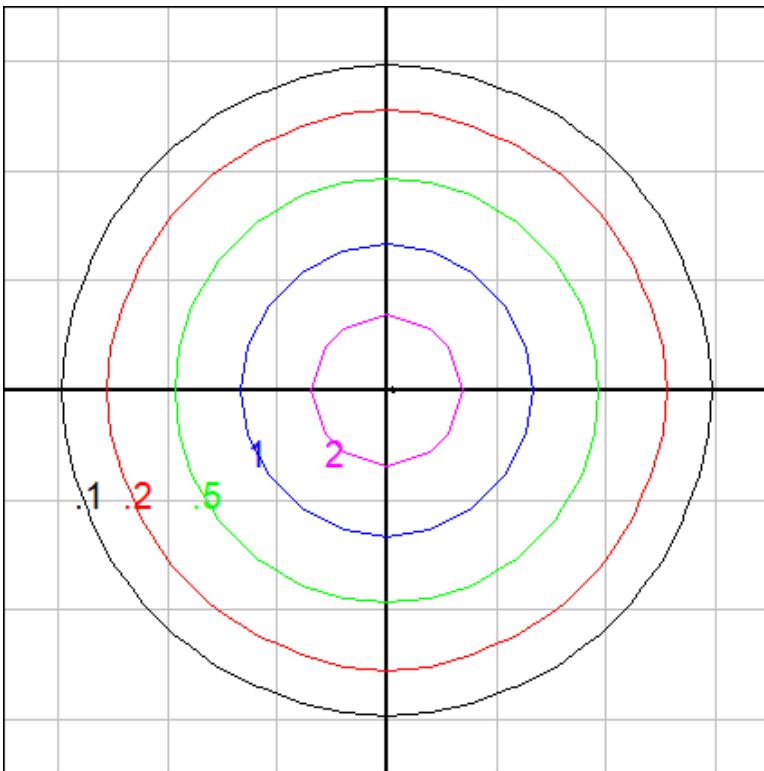


Characteristics

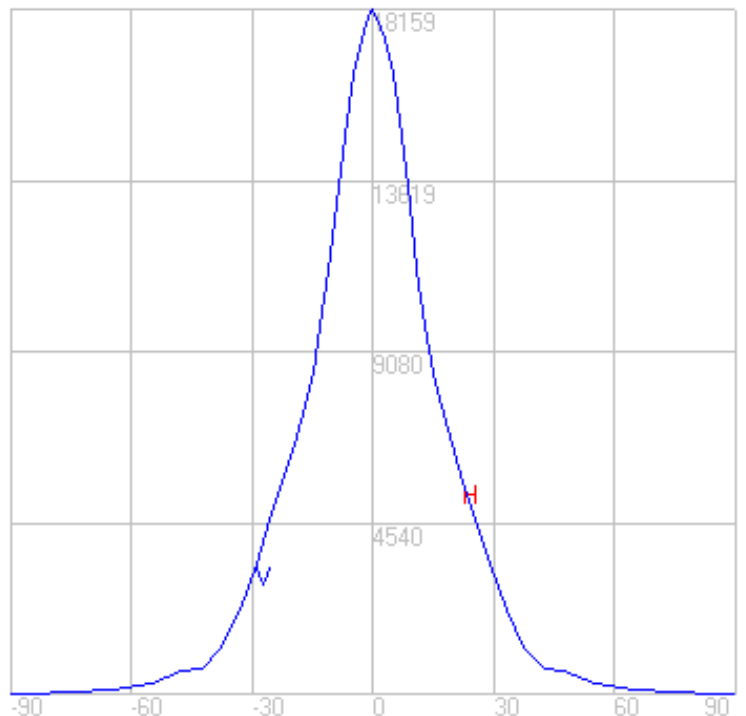
NEMA Type	4 H x 4 V
Maximum Candela	18434.7
Maximum Candela Angle	0 H 0 V
Horizontal Beam Angle (50%)	28.2
Vertical Beam Angle (50%)	28.2
Horizontal Field Angle (10%)	69.6
Vertical Field Angle (10%)	69.6
Lumens Per Lamp	N.A. (absolute)
Total Lamp Lumens	N.A. (absolute)
Beam Lumens	2339
Beam Efficiency	N.A.
Field Lumens	6717
Field Efficiency	N.A.
Spill Lumens	1492
Luminaire Lumens	8209
Total Efficiency	N.A.
Total Luminaire Watts	77

Zonal Lumen Summary

Zone	Lumens
0-10	1446.76
10-20	2455.64
20-30	2203.76
30-40	1130.36
40-50	517.40
50-60	293.18
60-70	101.73
70-80	37.35
80-90	6.86
90-100	0.00
100-110	0.00
110-120	0.00
120-130	0.00
130-140	0.00
140-150	0.00
150-160	0.00
160-170	0.00
170-180	0.00



Fixture Setback = 75 ft. Grid Spacing = 20 ft.

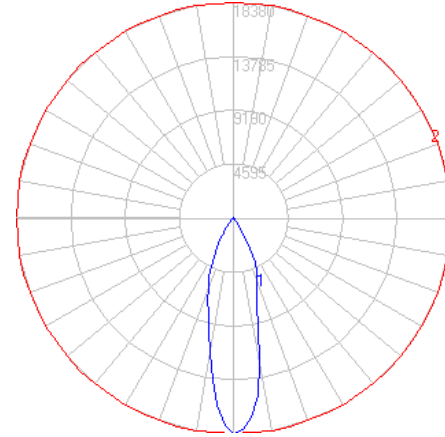


In the interest of product improvement, BEGA reserves the right to make technical changes without notice.

BEGA

Photometric Filename: 84548K4_71072.ies

TEST: BE_84548K4_71072
 TEST LAB: BEGA
 DATE: 2/20/2018
 LUMINAIRE: 84548 + 71072 shield
 LAMP: 71.1W LED

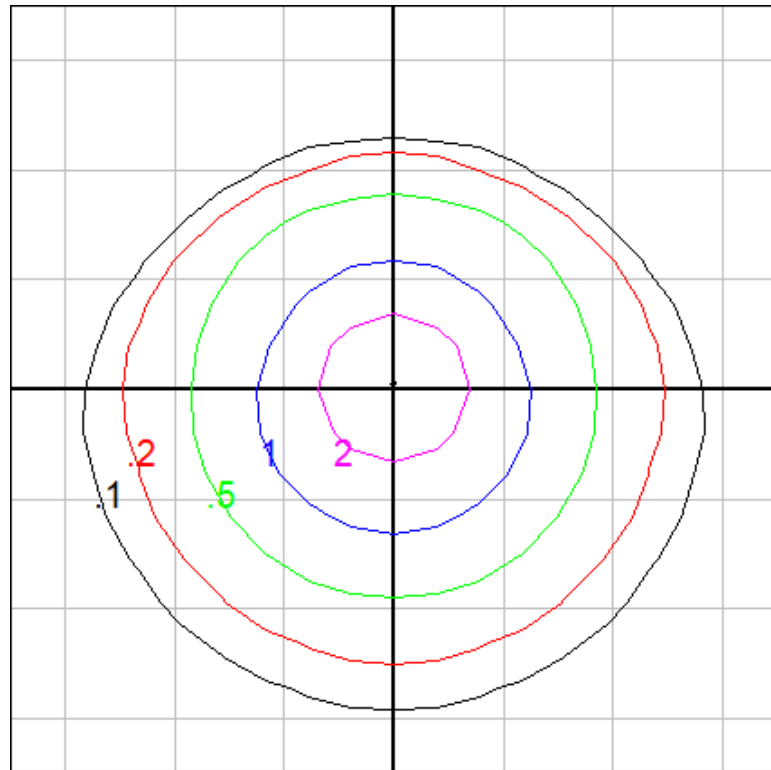


Characteristics

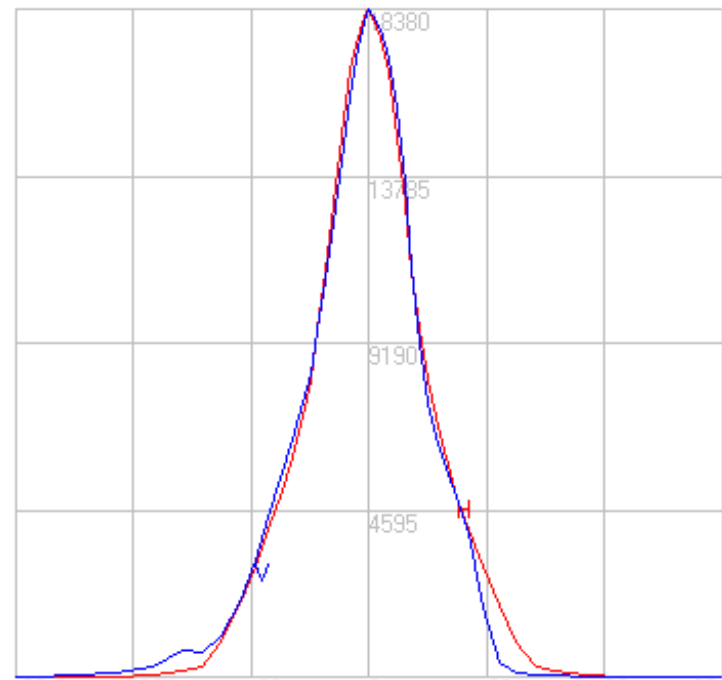
NEMA Type	4 H x 4 V
Maximum Candela	18659.7
Maximum Candela Angle	0 H 0 V
Horizontal Beam Angle (50%)	27.2
Vertical Beam Angle (50%)	26.6
Horizontal Field Angle (10%)	67.0
Vertical Field Angle (10%)	63.1
Lumens Per Lamp	N.A. (absolute)
Total Lamp Lumens	N.A. (absolute)
Beam Lumens	2244
Beam Efficiency	N.A.
Field Lumens	6040
Field Efficiency	N.A.
Spill Lumens	863
Luminaire Lumens	6903
Total Efficiency	N.A.
Total Luminaire Watts	77

Zonal Lumen Summary

Zone	Lumens
0-10	1457.67
10-20	2329.29
20-30	1966.73
30-40	740.93
40-50	243.52
50-60	105.78
60-70	34.95
70-80	11.34
80-90	2.23
90-100	0.49
100-110	0.12
110-120	0.03
120-130	0.00
130-140	0.00
140-150	0.00
150-160	0.00
160-170	0.00
170-180	0.00



Fixture Setback = 75 ft. Grid Spacing = 20 ft.

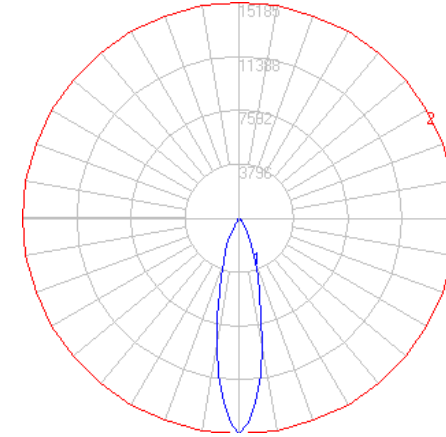


In the interest of product improvement, BEGA reserves the right to make technical changes without notice.

BEGA

Photometric Filename: 84548K4_71073.ies

TEST: BE_84548K4_71073
 TEST LAB: BEGA
 DATE: 2/20/2018
 LUMINAIRE: 84548 + 71073 louver
 LAMP: 71.1W LED

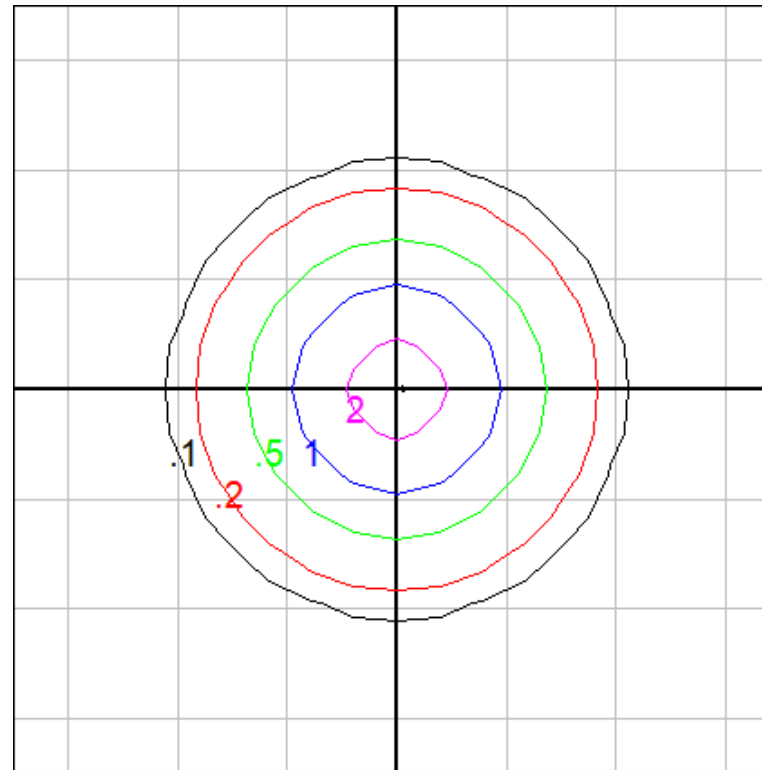


Characteristics

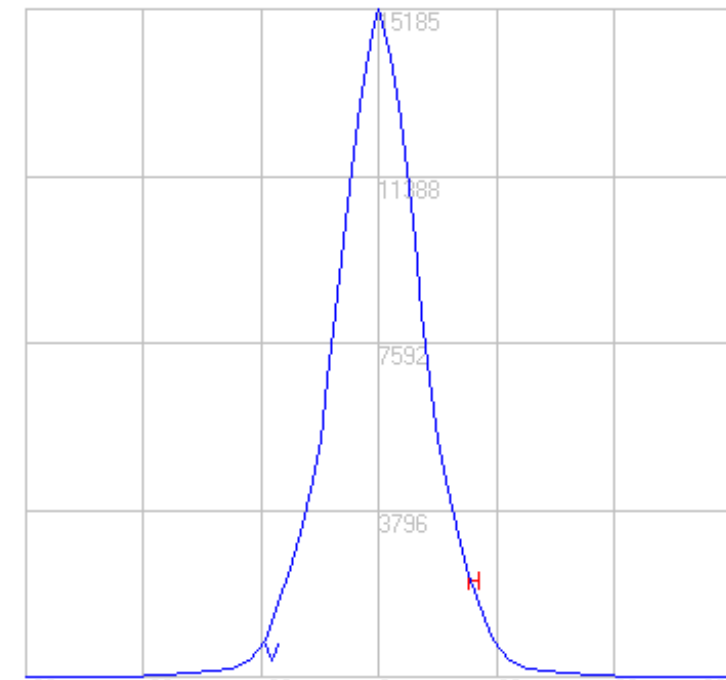
NEMA Type	4 H x 4 V
Maximum Candela	15413.6
Maximum Candela Angle	0 H 0 V
Horizontal Beam Angle (50%)	23.9
Vertical Beam Angle (50%)	23.9
Horizontal Field Angle (10%)	52.2
Vertical Field Angle (10%)	52.2
Lumens Per Lamp	N.A. (absolute)
Total Lamp Lumens	N.A. (absolute)
Beam Lumens	1435
Beam Efficiency	N.A.
Field Lumens	3295
Field Efficiency	N.A.
Spill Lumens	564
Luminaire Lumens	3859
Total Efficiency	N.A.
Total Luminaire Watts	77

Zonal Lumen Summary

Zone	Lumens
0-10	1136.2
10-20	1566.4
20-30	826.58
30-40	194.39
40-50	75.90
50-60	32.18
60-70	16.89
70-80	8.52
80-90	2.75
90-100	0.00
100-110	0.00
110-120	0.00
120-130	0.00
130-140	0.00
140-150	0.00
150-160	0.00
160-170	0.00
170-180	0.00



Fixture Setback = 75 ft. Grid Spacing = 20 ft.

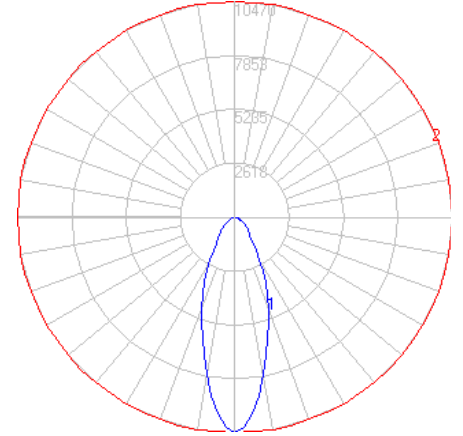


In the interest of product improvement, BEGA reserves the right to make technical changes without notice.

BEGA

Photometric Filename: 84548K4_71074.ies

TEST: BE_84548K4_71074
 TEST LAB: BEGA
 DATE: 2/20/2018
 LUMINAIRE: 84548_71074 elliptical lens
 LAMP: 71.1W LED

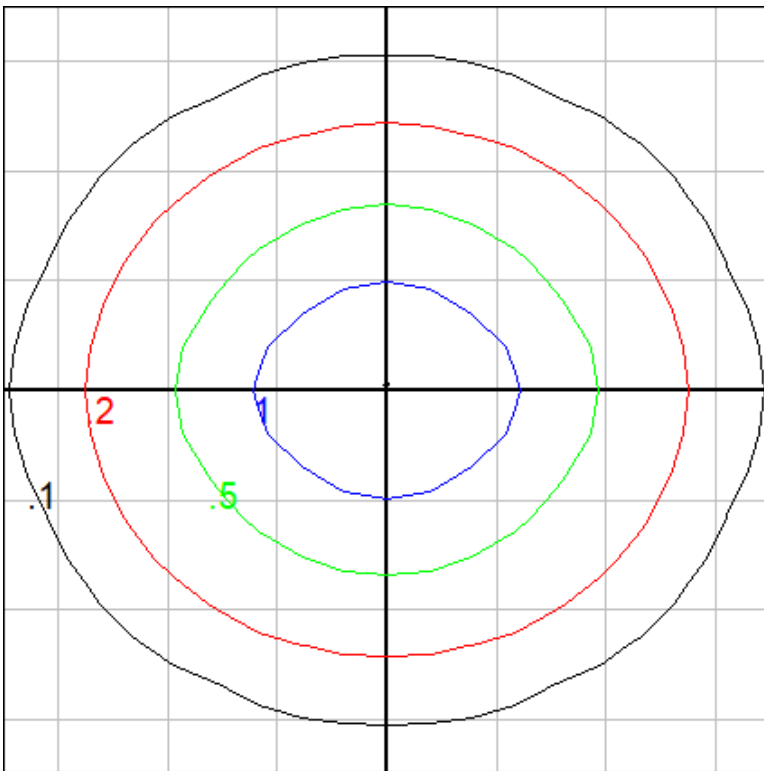


Characteristics

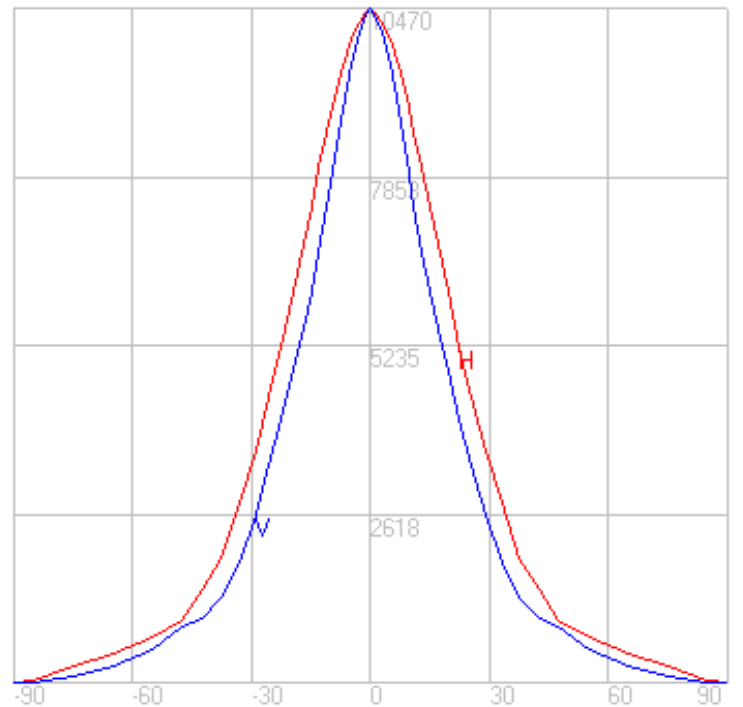
NEMA Type	5 H x 5 V
Maximum Candela	10629.1
Maximum Candela Angle	0 H 0 V
Horizontal Beam Angle (50%)	44.9
Vertical Beam Angle (50%)	36.1
Horizontal Field Angle (10%)	93.3
Vertical Field Angle (10%)	83.6
Lumens Per Lamp	N.A. (absolute)
Total Lamp Lumens	N.A. (absolute)
Beam Lumens	2644
Beam Efficiency	N.A.
Field Lumens	6146
Field Efficiency	N.A.
Spill Lumens	1368
Luminaire Lumens	7513
Total Efficiency	N.A.
Total Luminaire Watts	77

Zonal Lumen Summary

Zone	Lumens
0-10	898.48
10-20	1859.72
20-30	1796.34
30-40	1239.53
40-50	773.35
50-60	485.49
60-70	286.82
70-80	139.43
80-90	24.15
90-100	0.00
100-110	0.00
110-120	0.00
120-130	0.00
130-140	0.00
140-150	0.00
150-160	0.00
160-170	0.00
170-180	0.00



Fixture Setback = 75 ft. Grid Spacing = 20 ft.



In the interest of product improvement, BEGA reserves the right to make technical changes without notice.