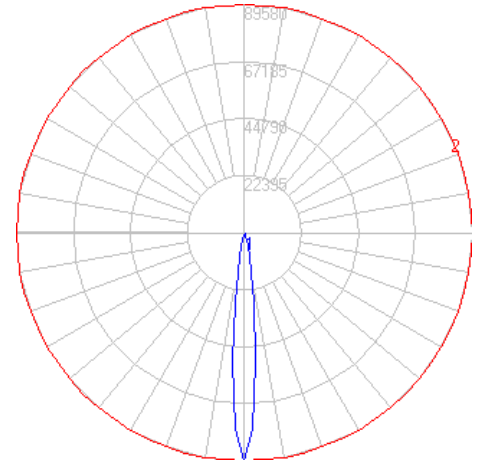


# BEGA

Photometric Filename: 84543.IES

TEST: BE\_84543  
 TEST LAB: BEGA  
 DATE: 6/14/2016  
 LUMINAIRE: 84 543  
 LAMP: 300W LED

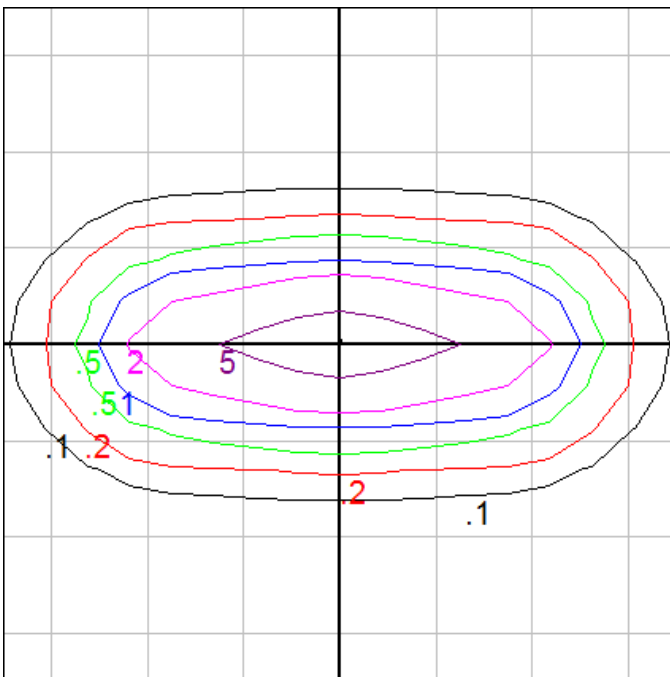


## Characteristics

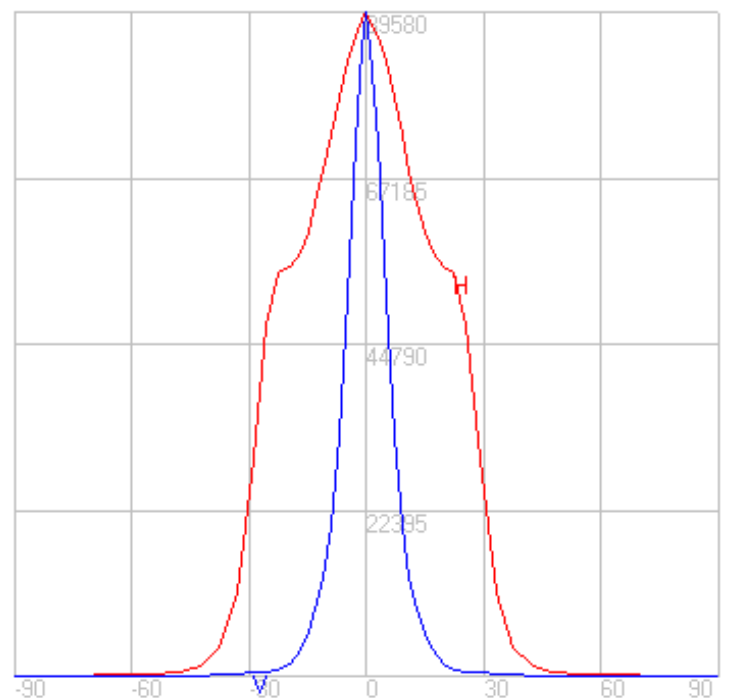
NEMA Type	4 H x 2 V
Maximum Candela	89579.6
Maximum Candela Angle	0 H 0 V
Horizontal Beam Angle (50%)	52.0
Vertical Beam Angle (50%)	11.3
Horizontal Field Angle (10%)	68.8
Vertical Field Angle (10%)	26.1
Lumens Per Lamp	N.A. (absolute)
Total Lamp Lumens	N.A. (absolute)
Beam Lumens	7402
Beam Efficiency	N.A.
Field Lumens	14749
Field Efficiency	N.A.
Spill Lumens	2500
Luminaire Lumens	17250
Total Efficiency	N.A.
Total Luminaire Watts	334

## Zonal Lumen Summary

Zone	Lumens
0-10	5298.79
10-20	6007.28
20-30	4263.43
30-40	1253.87
40-50	269.22
50-60	108.20
60-70	52.46
70-80	19.18
80-90	2.48
90-100	0.00
100-110	0.00
110-120	0.00
120-130	0.00
130-140	0.00
140-150	0.00
150-160	0.00
160-170	0.00
170-180	0.00



Mounting Height = 100 ft. Grid Spacing = 25 ft.



In the interest of product improvement, BEGA reserves the right to make technical changes without notice.