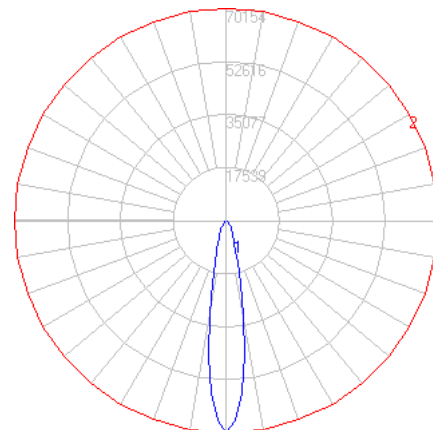


BEGA

File: 84525_BEGA_IES.ies

TEST: BE_84525*
 TEST LAB: BEGA
 DATE: 09/04/2018
 LUMINAIRE: 84 525 RGBW
 LAMP: 195.0W LED

*MEASURED WITH ALL RGBW ON 100%

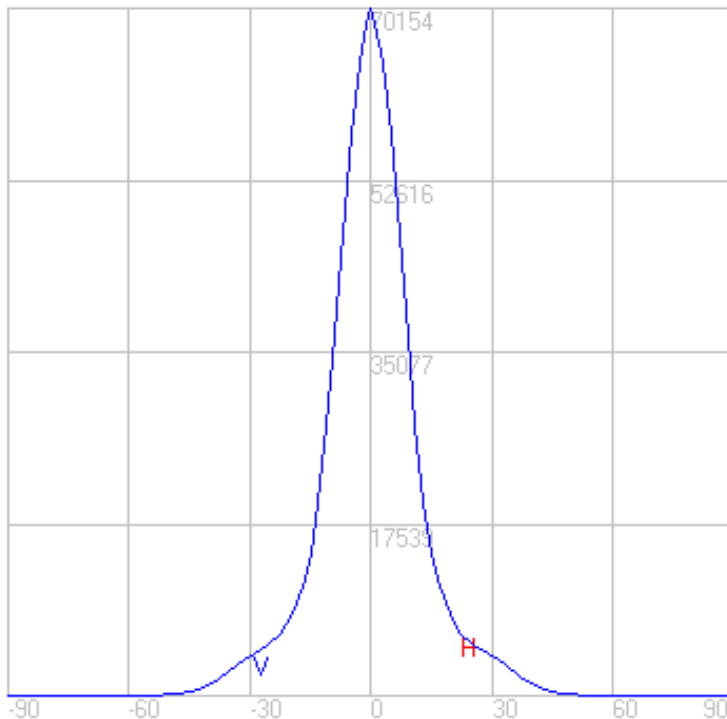
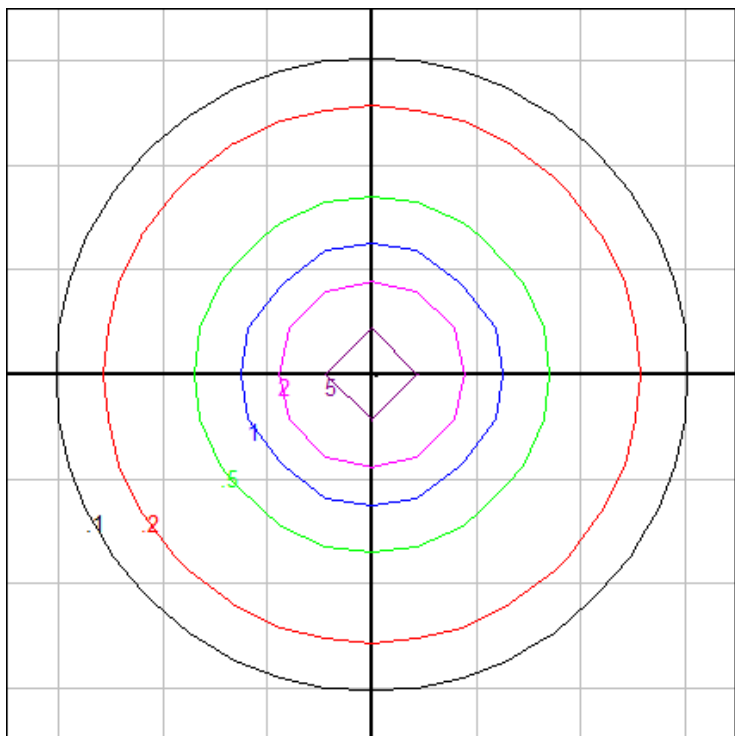


Characteristics

NEMA Type	3 H x 3 V
Maximum Candela	70154.279
Maximum Candela Angle	0 H 0 V
Horizontal Beam Angle (50%)	18.8
Vertical Beam Angle (50%)	18.8
Horizontal Field Angle (10%)	43.0
Vertical Field Angle (10%)	43.0
Lumens Per Lamp	N.A. (absolute)
Total Lamp Lumens	N.A. (absolute)
Beam Lumens	4174
Beam Efficiency	N.A.
Field Lumens	9362
Field Efficiency	N.A.
Spill Lumens	4150
Luminaire Lumens	13512
Total Efficiency	N.A.
Total Luminaire Watts	211
Ballast Factor	1.00

Zonal Lumen Summary

Zone	Lumens
0-10	4629.78
10-20	4328.19
20-30	2555.6
30-40	1608.13
40-50	295.11
50-60	88.88
60-70	27.40
70-80	3.15
80-90	1.82
90-100	0.00
100-110	0.00
110-120	0.00
120-130	0.00
130-140	0.00
140-150	0.00
150-160	0.00
160-170	0.00
170-180	0.00



Mounting Height: 100 ft.

Grid Spacing: 25 ft.

In the interest of product improvement, BEGA reserves the right to make technical changes without notice.

BEGA 1000 Bega Way, Carpinteria, CA 93013 (805)684-0533 Fax (805)566-9474 www.bega-us.com © Copyright BEGA-US 2021

4/26/2021