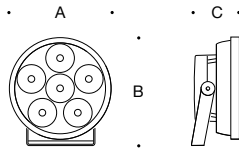


Tools Required:

- 6mm hex head screwdriver



Dimensions

- A:** 19-1/2"
- B:** 20-3/4"
- C:** 8-5/8"



Overview:

- LED Watts: 195.0W
- System Watts: 211.0W
- Controllability: DMX and RDM compatible
- Weight: 43.9 lbs.
- Protection Class: IP67

Notice to Installer:

1. See page 2 for specific product safety warnings.
2. Suitable for operation in ambient temperatures not to exceed 25°C.
3. Floodlight must be connected to a DMX compatible lighting control system, floodlight will not operate otherwise.
4. Installer should be familiar with "Recommended Practice for DMX 512".
5. A terminator must be used at the end of the run between data lines per the "Recommended Practice for DMX 512".
6. It is recommended to avoid running DMX cables in parallel with power cables and dimming cables. Failure to do so could cause interference with DMX controls.
7. BEGA luminaires may be damaged if connected to conduit systems containing water - Article 300-5g of the National Electric Code requires that "Conduits or raceways through which moisture may contact energized live parts shall be sealed or plugged at either or both ends".
8. Floodlight is provided with mounting yoke that is compatible with various BEGA mounting accessories, see specification sheet for details.
9. Floodlight is provided with 5ft of shielded 22 AWG, 2 conductor DMX cable, OD .281".
10. Floodlight is provided with 5ft of 18 AWG, 3 conductor SJTOW supply power cable, OD .310".

Figure 1:

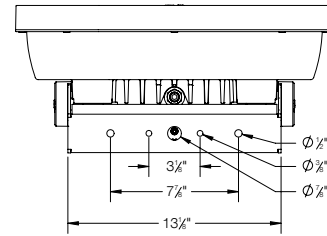


Figure 2:

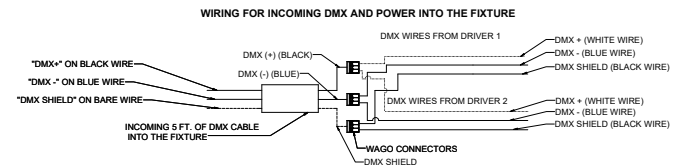
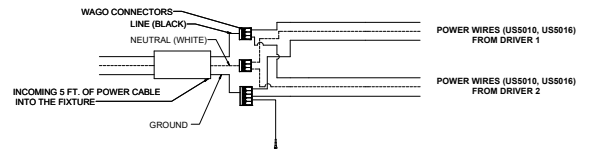
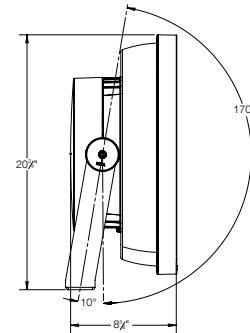


Figure 3:



Luminaire 84525 installation:

1. Install the floodlight using the appropriate BEGA mounting accessory, or mount the stainless steel yoke directly to a surface capable of providing suitable anchorage for the weight of the fixture, using hardware by others. Mounting holes provided with the yoke, see Figure 1.
2. A separate, wet location wiring box must be supplied (by others). A U.L. listed water tight compression fitting must be used to accept the cord from the fixture. See notice to installer steps 9 and 10 for cord information. Note that DMX and supply wiring connections cannot be made in the same compartment and must be separated to prevent interference with the DMX controls.
3. Make DMX cable connections per "Recommended Practice for DMX 512":
 - "DMX SHIELD" : BARE WIRE
 - "DMX -" [NEGATIVE] : BLUE WIRE
 - "DMX +" [POSITIVE] : WHITE WIRE
4. Make supply wiring and cable connections inside junction box:
 - MAIN VOLTAGE SUPPLY WIRE TO BLACK LUMINAIRE WIRE;
 - NEUTRAL (COMMON) SUPPLY WIRE TO WHITE LUMINAIRE WIRE
 - GREEN (GROUND) WIRE TO GREEN LUMINAIRE WIRE
5. Floodlight is vertically adjustable between -10° and +170°. To adjust floodlight aiming angle, loosen (2) 6mm hex head screws on either side of the yoke where it attaches to the floodlight. Aim the floodlight as desired and then tighten the (2) 6mm hex head screws to lock into place.



Luminaire Accessories

Please refer to the appropriate accessory installation sheet for further instruction when applicable.

- Concentric ring louver **71 105**
- 180° glare shield **71 101**
- 360° glare shield **79 509**

Mounting Accessories

Please refer to the appropriate accessory installation sheet for further instruction when applicable.

- Mounting bracket for pole top Ø 3" **79 435**
- Pole mount hub for pole top Ø 3" **79 555**
- Pole mount canopy for 5" OD pole **79 553**
- Pole mount arm for 5" OD pole **79 550**
- Wall mount canopy **79 554**
- Wall mount arm **79 551**
- Pole top for 2 floodlights **70 762**
- Pole top for 3 floodlights **70 763**
- Pole top for 4 floodlights **70 764**
- Cross beam for 3 floodlights **70 761**
- Cross beam for 6 floodlights **70 765**

Maintenance:

Clean regularly with solvent-free cleaner removing dirt and debris. Do not use high pressure cleaners.

Replacement Parts

See label inside of fixture for LED replacement part number.

Consult factory for all other replacement components.

Product Safety Warnings:

**THIS PRODUCT MUST BE INSTALLED IN ACCORDANCE WITH THE APPLICABLE INSTALLATION CODE BY A PERSON FAMILIAR WITH THE CONSTRUCTION AND OPERATION OF THE PRODUCT AND THE HAZARDS INVOLVED. SUITABLE FOR WET LOCATIONS.
MIN 60°C SUPPLY CONDUCTORS.**

**CE PRODUIT DOIT ÊTRE INSTALLÉ SELON LE CODE D'INSTALLATION PERTINENT, PAR UNE PERSONNE QUI CONNAÎT BIEN LE PRODUIT ET SON FONCTIONNEMENT AINSI QUE LES RISQUES INHÉRENTS. CONVIENT AUX EMPLACEMENTS MOUILLÉS.
LES FILS D'ALIMENTATION 60°C MIN.**