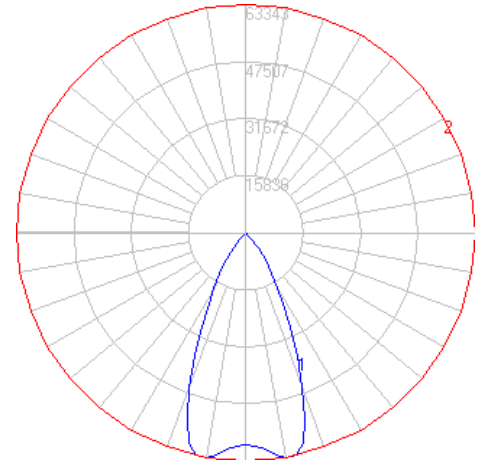


BEGA

Photometric Filename: 84522.IES

TEST: BE_84522
 TEST LAB: BEGA
 DATE: 6/14/2016
 LUMINAIRE: 84 522
 LAMP: 303W LED

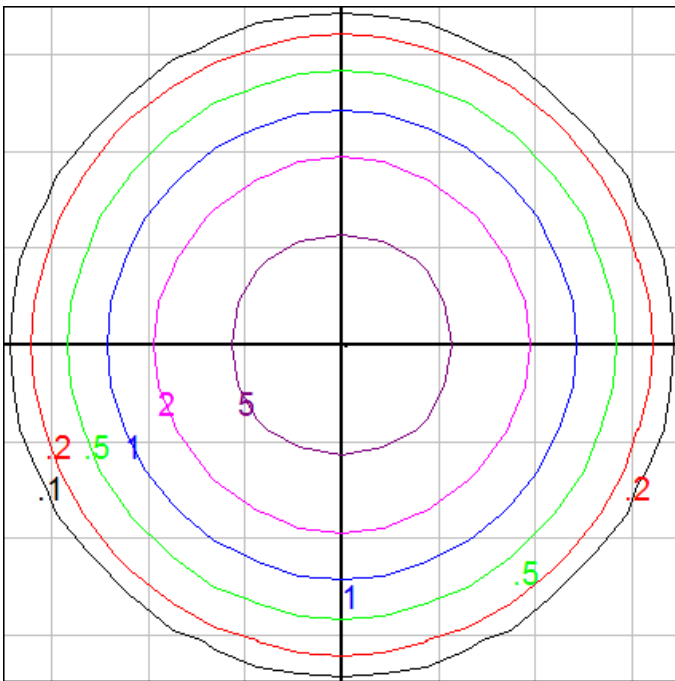


Characteristics

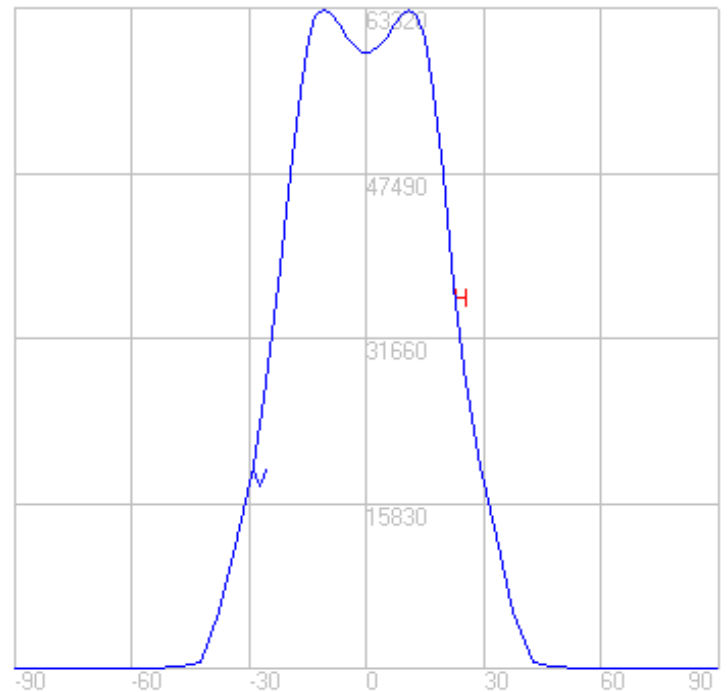
NEMA Type	5 H x 5 V
Maximum Candela	63320.2
Maximum Candela Angle	-9 H -5 V
Horizontal Beam Angle (50%)	44.9
Vertical Beam Angle (50%)	47.4
Horizontal Field Angle (10%)	72.2
Vertical Field Angle (10%)	73.4
Lumens Per Lamp	N.A. (absolute)
Total Lamp Lumens	N.A. (absolute)
Beam Lumens	28825
Beam Efficiency	N.A.
Field Lumens	40599
Field Efficiency	N.A.
Spill Lumens	1337
Luminaire Lumens	41936
Total Efficiency	N.A.
Total Luminaire Watts	336

Zonal Lumen Summary

Zone	Lumens
0-10	5877.95
10-20	16221.89
20-30	13454.86
30-40	5801.56
40-50	400.33
50-60	42.36
60-70	17.98
70-80	9.53
80-90	1.77
90-100	0.00
100-110	0.00
110-120	0.00
120-130	0.00
130-140	0.00
140-150	0.00
150-160	0.00
160-170	0.00
170-180	0.00



Mounting Height = 100 ft. Grid Spacing = 25 ft.



In the interest of product improvement, BEGA reserves the right to make technical changes without notice.

BEGA 1000 Bega Way, Carpinteria, CA 93013 (805)684-0533 Fax (805)566-9474 www.bega-us.com © Copyright BEGA-US 2017

6/15/2017