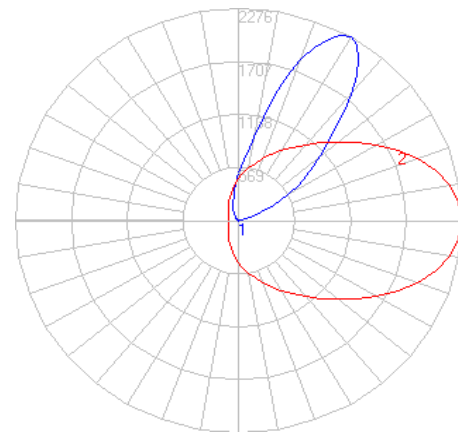


BEGA

File: 84299K4_BEGA_IES.ies

TEST: BE_84299K4
 TEST LAB: BEGA
 DATE: 1/7/2020
 LUMINAIRE: 84 299K4
 LAMP: 16.0W LED

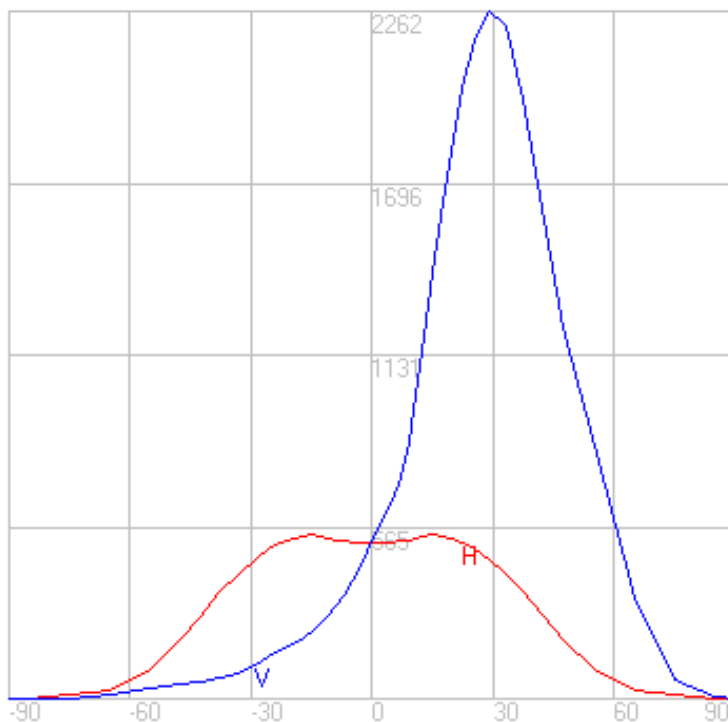
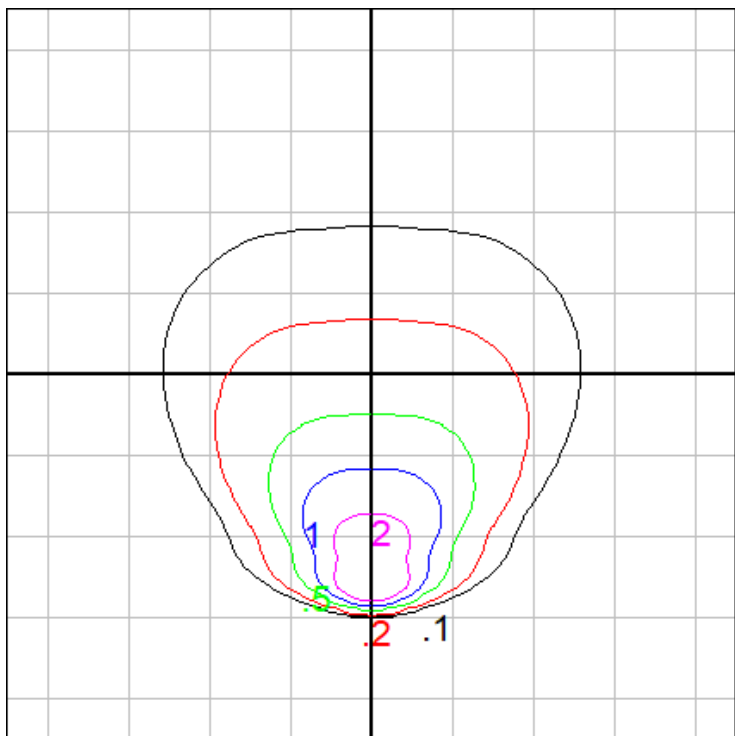


Characteristics

NEMA Type	5 H x 5 V
Maximum Candela	2261.9
Maximum Candela Angle	0 H 29 V
Horizontal Beam Angle (50%)	46.1
Vertical Beam Angle (50%)	36.9
Horizontal Field Angle (10%)	99.3
Vertical Field Angle (10%)	83.6
Lumens Per Lamp	N.A. (absolute)
Total Lamp Lumens	N.A. (absolute)
Beam Lumens	648
Beam Efficiency	N.A.
Field Lumens	1499
Field Efficiency	N.A.
Spill Lumens	215
Luminaire Lumens	1714
Total Efficiency	N.A.
Total Luminaire Watts	19
Ballast Factor	1.00

Zonal Lumen Summary

Zone	Lumens
0-10	0.00
10-20	0.00
20-30	0.00
30-40	0.00
40-50	0.00
50-60	0.00
60-70	0.00
70-80	0.00
80-90	0.02
90-100	3.69
100-110	25.50
110-120	100.61
120-130	232.17
130-140	348.02
140-150	413.54
150-160	348.32
160-170	184.67
170-180	50.49



Setback: 2 ft.

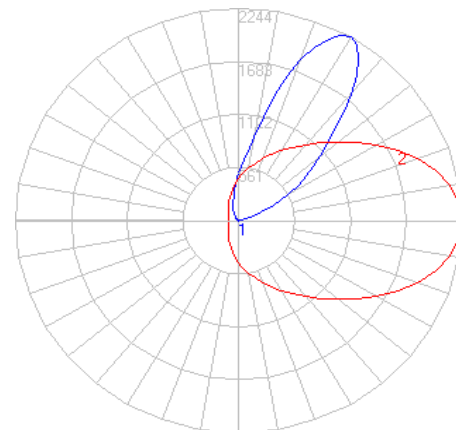
Grid Spacing: 4 ft.

In the interest of product improvement, BEGA reserves the right to make technical changes without notice.

BEGA

File: 84299K35_BEGA_IES.ies

TEST: BE_84299K4
 TEST LAB: BEGA
 DATE: 1/7/2020
 LUMINAIRE: 84 299K35
 LAMP: 16.0W LED

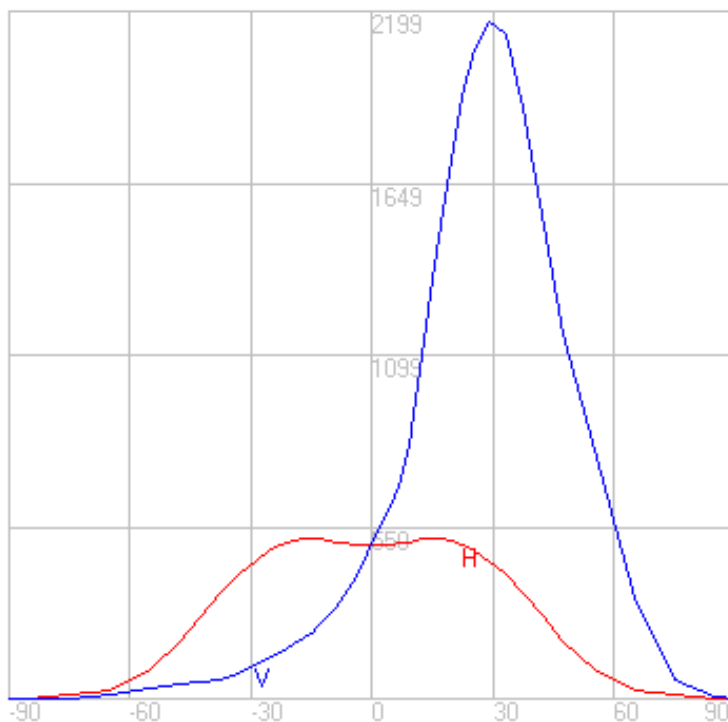
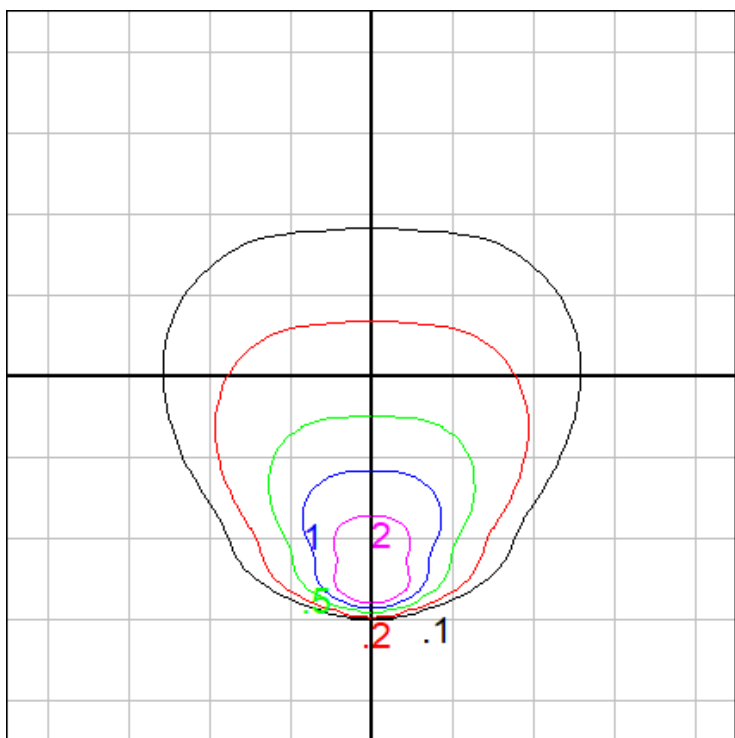


Characteristics

NEMA Type	5 H x 5 V
Maximum Candela	2198.991
Maximum Candela Angle	0 H 29 V
Horizontal Beam Angle (50%)	46.1
Vertical Beam Angle (50%)	36.9
Horizontal Field Angle (10%)	99.3
Vertical Field Angle (10%)	83.6
Lumens Per Lamp	N.A. (absolute)
Total Lamp Lumens	N.A. (absolute)
Beam Lumens	630
Beam Efficiency	N.A.
Field Lumens	1457
Field Efficiency	N.A.
Spill Lumens	209
Luminaire Lumens	1666
Total Efficiency	N.A.
Total Luminaire Watts	19
Ballast Factor	1.00

Zonal Lumen Summary

Zone	Lumens
0-10	0.00
10-20	0.00
20-30	0.00
30-40	0.00
40-50	0.00
50-60	0.00
60-70	0.00
70-80	0.00
80-90	0.02
90-100	3.64
100-110	25.14
110-120	99.20
120-130	228.92
130-140	343.14
140-150	407.75
150-160	343.45
160-170	182.08
170-180	49.78



Setback: 2 ft.

Grid Spacing: 4 ft.

In the interest of product improvement, BEGA reserves the right to make technical changes without notice.

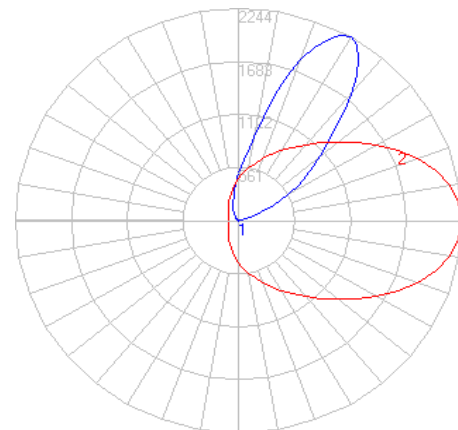
BEGA 1000 Bega Way, Carpinteria, CA 93013 (805)684-0533 Fax (805)566-9474 www.bega-us.com © Copyright BEGA-US 2021

5/25/2021

BEGA

File: 84299K3_BEGA_IES.ies

TEST: BE_84299K4
 TEST LAB: BEGA
 DATE: 1/7/2020
 LUMINAIRE: 84 299K3
 LAMP: 16.0W LED

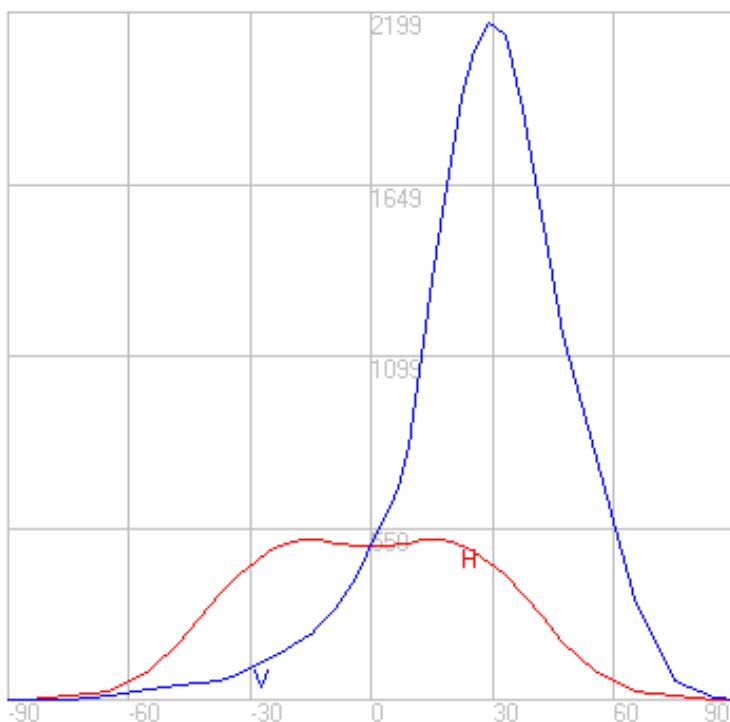
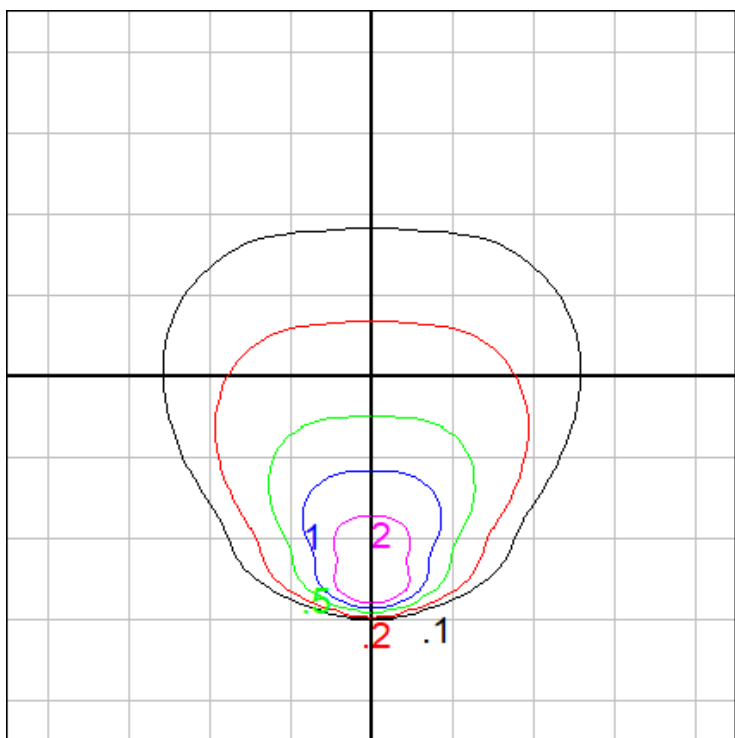


Characteristics

NEMA Type	5 H x 5 V
Maximum Candela	2198.991
Maximum Candela Angle	0 H 29 V
Horizontal Beam Angle (50%)	46.1
Vertical Beam Angle (50%)	36.9
Horizontal Field Angle (10%)	99.3
Vertical Field Angle (10%)	83.6
Lumens Per Lamp	N.A. (absolute)
Total Lamp Lumens	N.A. (absolute)
Beam Lumens	630
Beam Efficiency	N.A.
Field Lumens	1457
Field Efficiency	N.A.
Spill Lumens	209
Luminaire Lumens	1666
Total Efficiency	N.A.
Total Luminaire Watts	19
Ballast Factor	1.00

Zonal Lumen Summary

Zone	Lumens
0-10	0.00
10-20	0.00
20-30	0.00
30-40	0.00
40-50	0.00
50-60	0.00
60-70	0.00
70-80	0.00
80-90	0.02
90-100	3.64
100-110	25.14
110-120	99.20
120-130	228.92
130-140	343.14
140-150	407.75
150-160	343.45
160-170	182.08
170-180	49.78



Setback: 2 ft.

Grid Spacing: 4 ft.

In the interest of product improvement, BEGA reserves the right to make technical changes without notice.

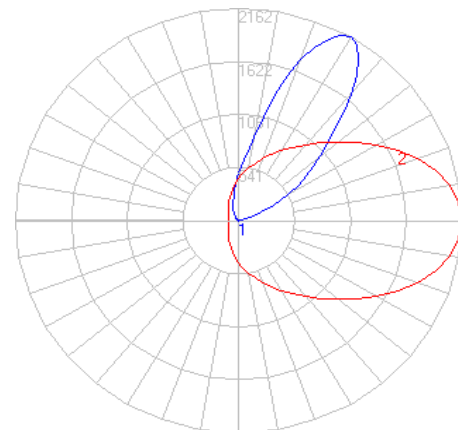
BEGA 1000 Bega Way, Carpinteria, CA 93013 (805)684-0533 Fax (805)566-9474 www.bega-us.com © Copyright BEGA-US 2021

5/25/2021

BEGA

File: 84299K27_BEGA_IES.ies

TEST: BE_84299K4
 TEST LAB: BEGA
 DATE: 1/7/2020
 LUMINAIRE: 84 299K27
 LAMP: 16.0W LED

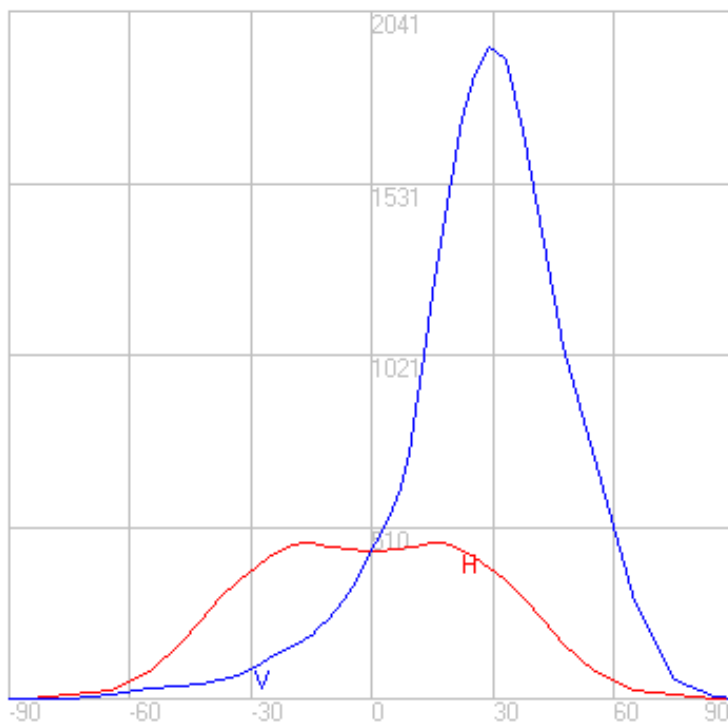
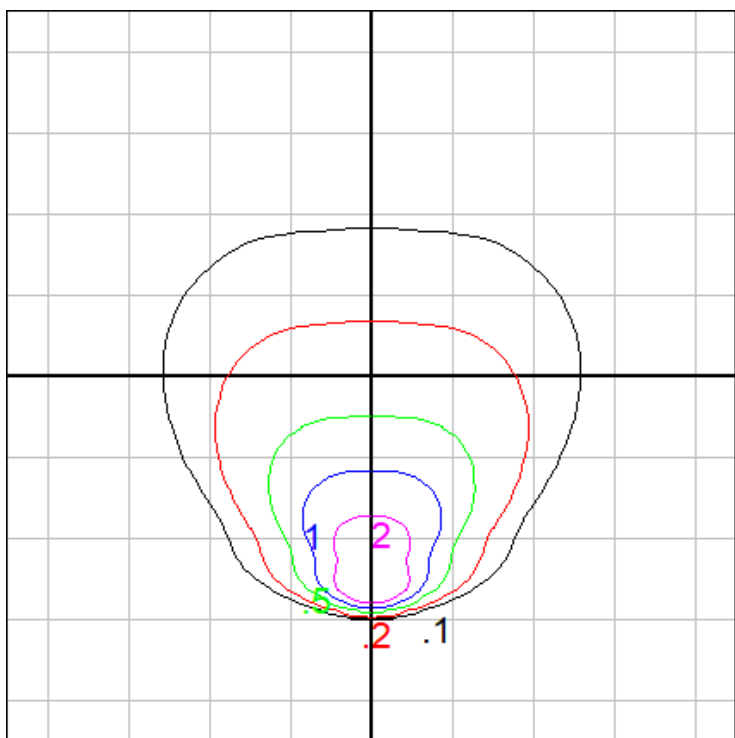


Characteristics

NEMA Type	5 H x 5 V
Maximum Candela	2041.346
Maximum Candela Angle	0 H 29 V
Horizontal Beam Angle (50%)	46.1
Vertical Beam Angle (50%)	36.9
Horizontal Field Angle (10%)	99.3
Vertical Field Angle (10%)	83.6
Lumens Per Lamp	N.A. (absolute)
Total Lamp Lumens	N.A. (absolute)
Beam Lumens	584
Beam Efficiency	N.A.
Field Lumens	1353
Field Efficiency	N.A.
Spill Lumens	194
Luminaire Lumens	1547
Total Efficiency	N.A.
Total Luminaire Watts	19
Ballast Factor	1.00

Zonal Lumen Summary

Zone	Lumens
0-10	0.00
10-20	0.00
20-30	0.00
30-40	0.00
40-50	0.00
50-60	0.00
60-70	0.00
70-80	0.00
80-90	0.02
90-100	3.51
100-110	24.22
110-120	95.58
120-130	220.57
130-140	330.62
140-150	392.87
150-160	330.91
160-170	175.43
170-180	47.96



Setback: 2 ft.

Grid Spacing: 4 ft.

In the interest of product improvement, BEGA reserves the right to make technical changes without notice.

BEGA 1000 Bega Way, Carpinteria, CA 93013 (805)684-0533 Fax (805)566-9474 www.bega-us.com © Copyright BEGA-US 2021

5/25/2021