

Application

A round in-grade for the illumination of signage, architectural features, and for wayfinding. Designed to bear pressure loads up to 11,000 lbs. from vehicles with pneumatic tires. The luminaire must not be used for traffic lanes where it is subject to horizontal pressure from vehicles braking, accelerating, or changing direction.

Materials

Clear safety glass with white ceramic coating
 Marine grade, copper free ($\leq 0.3\%$ copper content) A360.0 aluminum alloy
 BEGA Tricoat ®, a 3-layer finishing technology for increased corrosion protection
 Corrosion-resistant 304 grade stainless steel
 Fully potted waterstopper cable
 High temperature silicone gasket
 Mechanically captive stainless steel fasteners

NRTL listed to North American Standards, suitable for wet locations
 Protection class IP 68

Weight: 24.7 lbs.

Electrical

Operating voltage	120-277VAC
Minimum start temperature	-40° C
LED module wattage	6.6W
System wattage	9.0W
Controllability	0-10V dimmable
Color rendering index	Ra > 80
Luminaire lumens	568lm
LED service life (L70)	60000hrs

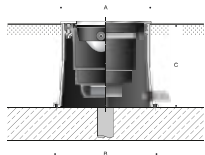
LED color temperature

- 4000K (K4)
- 3500K (K35)
- 3000K (K3)
- 2700K (K27)

BEGA can supply you with suitable LED replacement modules for up to 20 years after the purchase of LED luminaires - see website for details

Finish

#4 brushed stainless steel. Custom colors are not available.



In-grade luminaire · Location luminaire

	LED	A	B	C
B84290	6.6W	13	14	10

Type:

BEGA Product:

Project:

Modified:

Available options

- | | |
|-----|---------------|
| FSC | Fusing |
| NSL | Non-skid lens |

Included (available for pre-shipment)

- | | |
|---------|----------------------|
| BB84290 | Installation housing |
|---------|----------------------|

