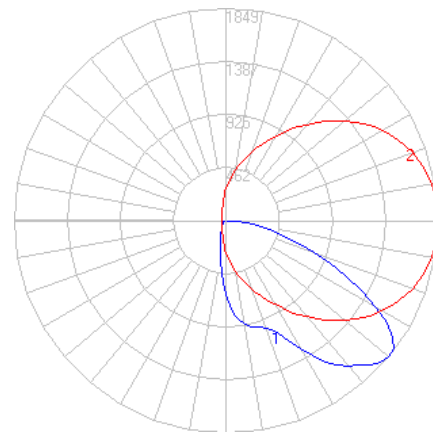
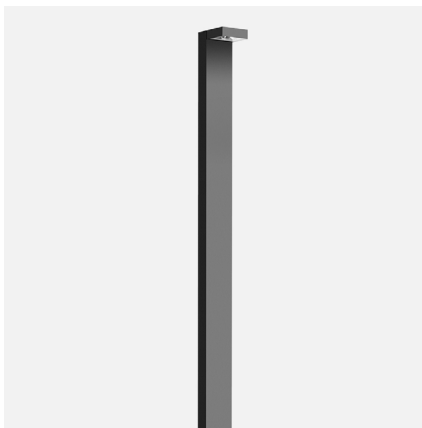


BEGA

File: 84274K4_BEGA_IES.ies

TEST: BE_84274K4
 TEST LAB: BEGA
 DATE: 08/25/2016
 LUMINAIRE: 84274 K4
 LAMP: 17.6W LED



Characteristics

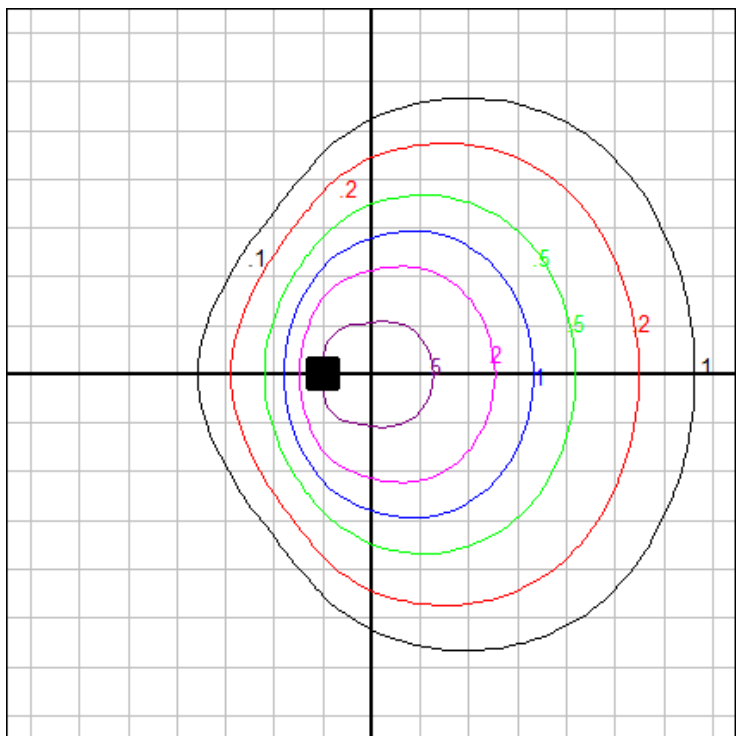
IES Classification	Type III
Longitudinal Classification	Very Short
Lumens Per Lamp	N.A. (absolute)
Total Lamp Lumens	N.A. (absolute)
Luminaire Lumens	2521
Downward Total Efficiency	N.A.
Total Luminaire Efficiency	N.A.
Luminaire Efficacy Rating (LER)	115
Total Luminaire Watts	22
Ballast Factor	1.00
Upward Waste Light Ratio	0.00
Max. Cd.	1849.2 (360H, 50V)
Max. Cd. (<90 Vert.)	1849.2 (360H, 50V)
Max. Cd. (At 90 Deg. Vert.)	4.5 (0.2%Lum)
Max. Cd. (80 to <90 Deg. Vert.)	270.9 (10.7%Lum)
Cutoff Classification (deprecated)	N.A. (absolute)

Lum. Classification System (LCS)

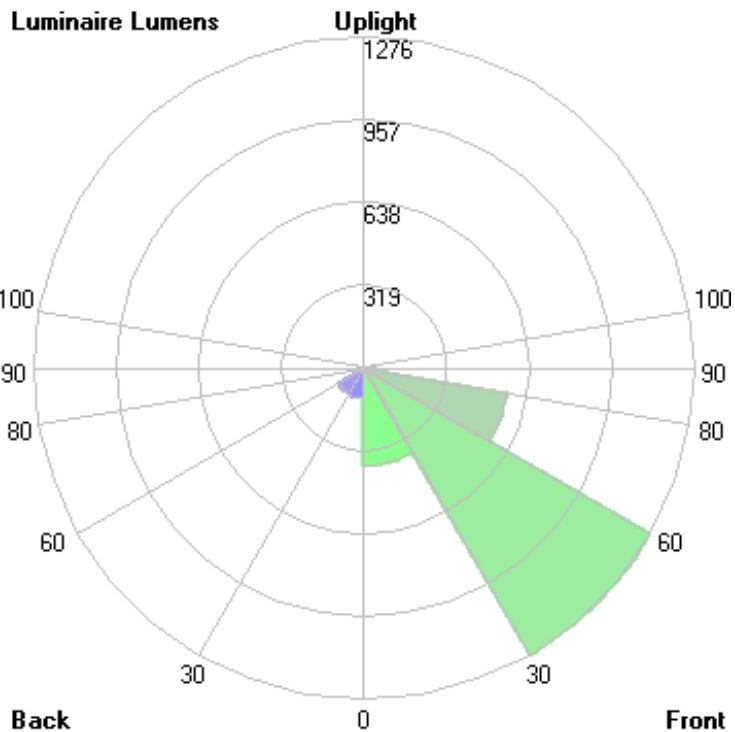
LCS Zone	Lumens	%Lamp	%Lum
FL (0-30)	376.1	N.A.	14.9
FM (30-60)	1276.2	N.A.	50.6
FH (60-80)	560.7	N.A.	22.2
FVH (80-90)	42.3	N.A.	1.7
BL (0-30)	119.0	N.A.	4.7
BM (30-60)	114.4	N.A.	4.5
BH (60-80)	30.4	N.A.	1.2
BVH (80-90)	2.1	N.A.	0.1
UL (90-100)	0.2	N.A.	0.0
UH (100-180)	0.0	N.A.	0.0
Total	2521.4	N.A.	100.0

BUG Rating B1-U0*-G1

*Fixture has measured rating of U1 due to testing above 90 degrees and stray light from reflection off of the fixture body. Upon visual inspection of luminaire, it has a flat lens and opaque sides, there is no significant uplight (<0.5%), and it has therefore been assigned a value of U0. Consult factory for more information.



Grid Spacing: 5 ft.

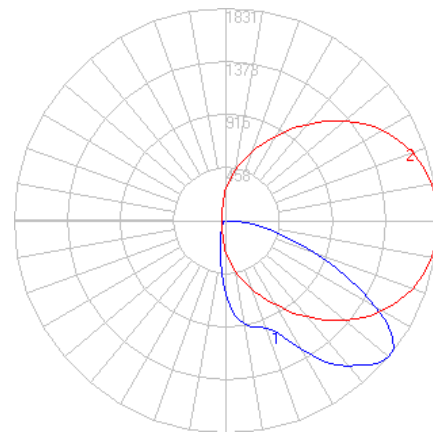
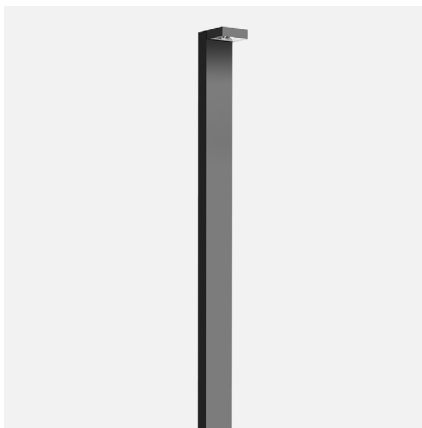


In the interest of product improvement, BEGA reserves the right to make technical changes without notice.

BEGA

File: 84274K35_BEGA_IES.ies

TEST: BE_84274K4
 TEST LAB: BEGA
 DATE: 08/25/2016
 LUMINAIRE: 84274 K35
 LAMP: 17.6W LED



Characteristics

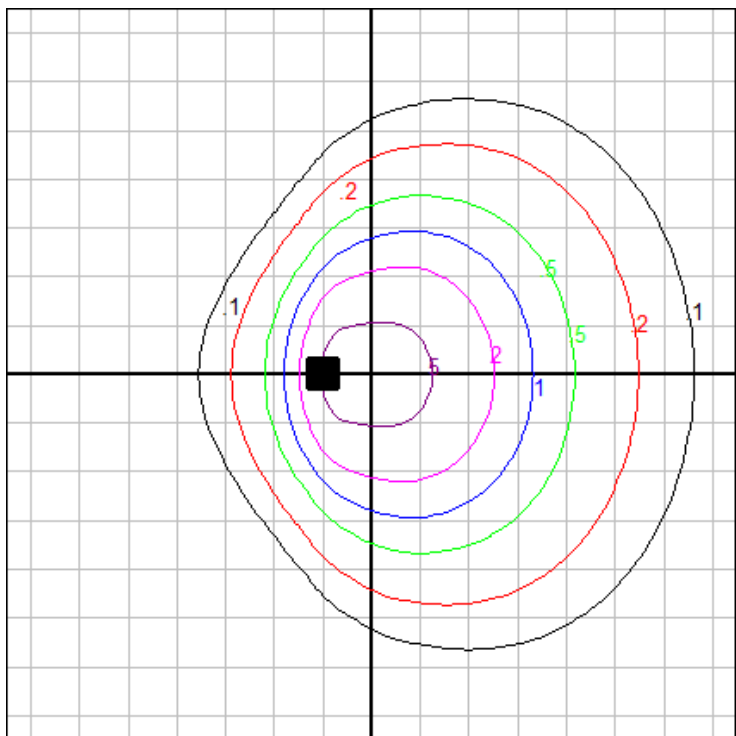
IES Classification	Type III
Longitudinal Classification	Very Short
Lumens Per Lamp	N.A. (absolute)
Total Lamp Lumens	N.A. (absolute)
Luminaire Lumens	2496
Downward Total Efficiency	N.A.
Total Luminaire Efficiency	N.A.
Luminaire Efficacy Rating (LER)	113
Total Luminaire Watts	22
Ballast Factor	1.00
Upward Waste Light Ratio	0.00
Max. Cd.	1830.708 (360H, 50V)
Max. Cd. (<90 Vert.)	1830.708 (360H, 50V)
Max. Cd. (At 90 Deg. Vert.)	4.455 (0.2%Lum)
Max. Cd. (80 to <90 Deg. Vert.)	268.191 (10.7%Lum)
Cutoff Classification (deprecated)	N.A. (absolute)

Lum. Classification System (LCS)

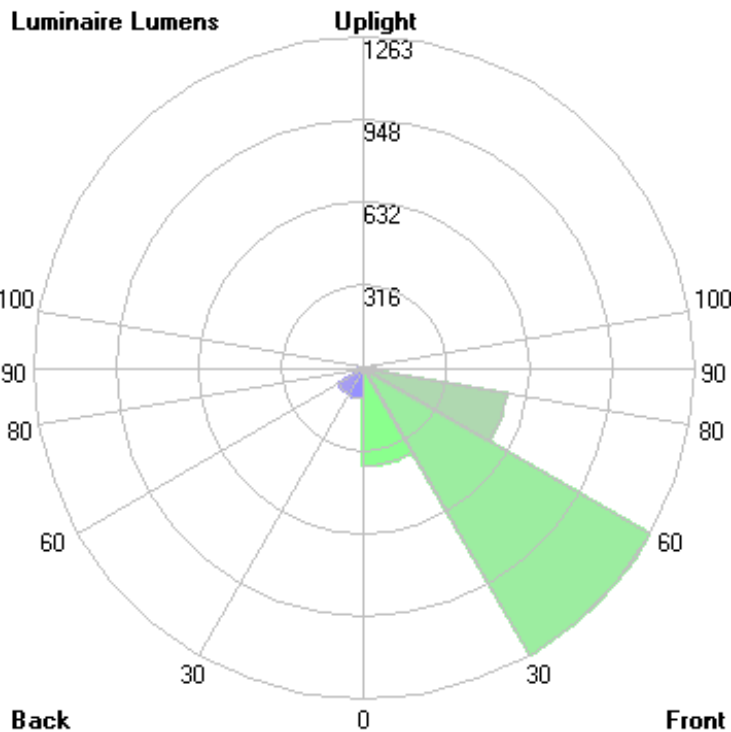
LCS Zone	Lumens	%Lamp	%Lum
FL (0-30)	372.4	N.A.	14.9
FM (30-60)	1263.4	N.A.	50.6
FH (60-80)	555.1	N.A.	22.2
FVH (80-90)	41.9	N.A.	1.7
BL (0-30)	117.8	N.A.	4.7
BM (30-60)	113.2	N.A.	4.5
BH (60-80)	30.1	N.A.	1.2
BVH (80-90)	2.1	N.A.	0.1
UL (90-100)	0.2	N.A.	0.0
UH (100-180)	0.0	N.A.	0.0
Total	2496.2	N.A.	100.0

BUG Rating B1-U0*-G1

*Fixture has measured rating of U1 due to testing above 90 degrees and stray light from reflection off of the fixture body. Upon visual inspection of luminaire, it has a flat lens and opaque sides, there is no significant uplight (<0.5%), and it has therefore been assigned a value of U0. Consult factory for more information.



Grid Spacing: 5 ft.

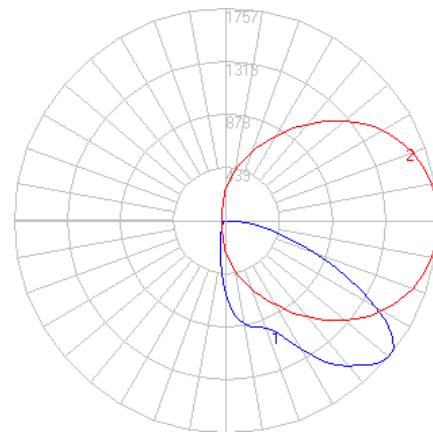
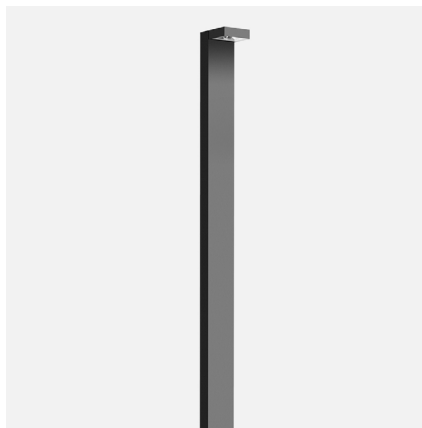


In the interest of product improvement, BEGA reserves the right to make technical changes without notice.

BEGA

File: 84274K3_BEGA_IES.ies

TEST: BE_84274K4
 TEST LAB: BEGA
 DATE: 08/25/2016
 LUMINAIRE: 84274 K3
 LAMP: 17.6W LED



Characteristics

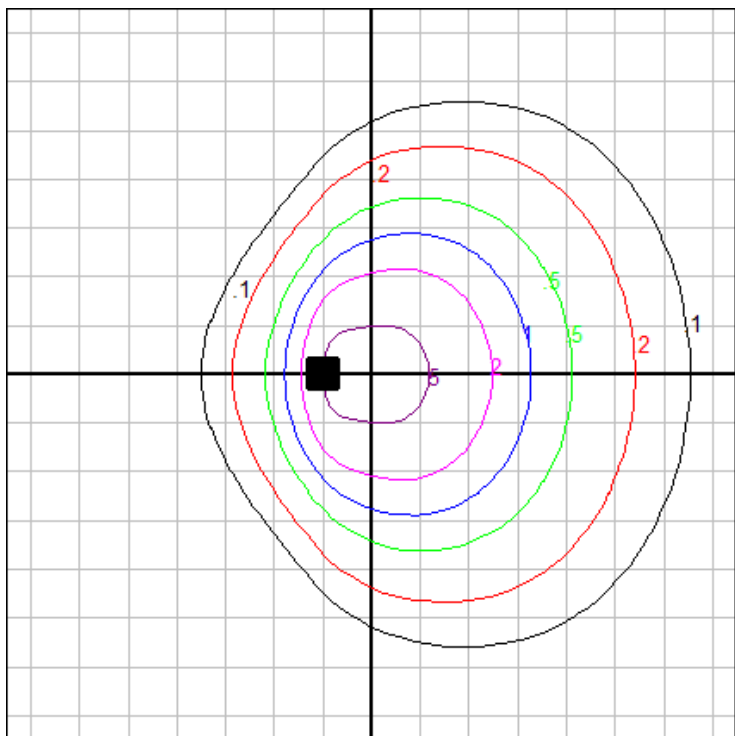
IES Classification	Type III
Longitudinal Classification	Very Short
Lumens Per Lamp	N.A. (absolute)
Total Lamp Lumens	N.A. (absolute)
Luminaire Lumens	2395
Downward Total Efficiency	N.A.
Total Luminaire Efficiency	N.A.
Luminaire Efficacy Rating (LER)	109
Total Luminaire Watts	22
Ballast Factor	1.00
Upward Waste Light Ratio	0.00
Max. Cd.	1756.74 (360H, 50V)
Max. Cd. (<90 Vert.)	1756.74 (360H, 50V)
Max. Cd. (At 90 Deg. Vert.)	4.275 (0.2%Lum)
Max. Cd. (80 to <90 Deg. Vert.)	257.355 (10.7%Lum)
Cutoff Classification (deprecated)	N.A. (absolute)

Lum. Classification System (LCS)

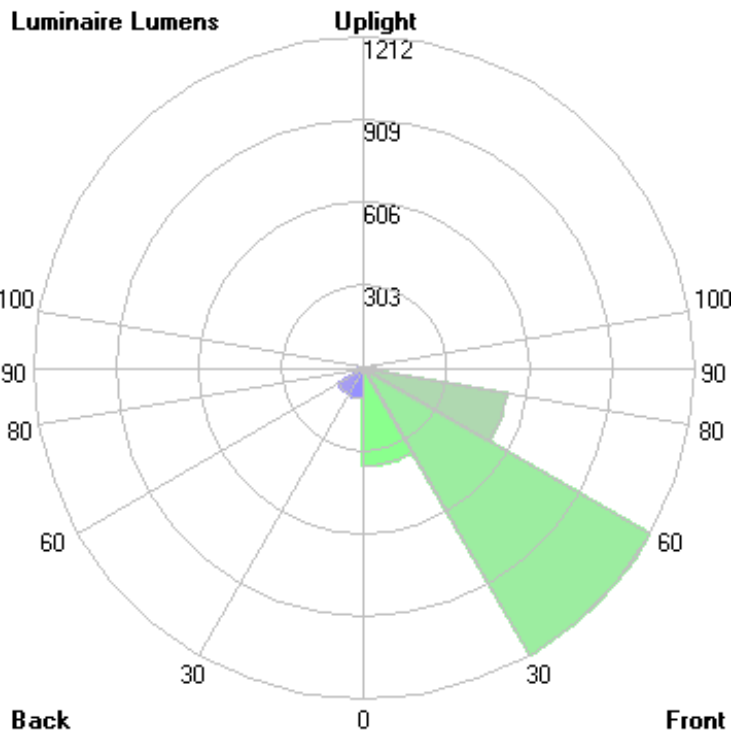
LCS Zone	Lumens	%Lamp	%Lum
FL (0-30)	357.3	N.A.	14.9
FM (30-60)	1212.4	N.A.	50.6
FH (60-80)	532.7	N.A.	22.2
FVH (80-90)	40.2	N.A.	1.7
BL (0-30)	113.0	N.A.	4.7
BM (30-60)	108.6	N.A.	4.5
BH (60-80)	28.9	N.A.	1.2
BVH (80-90)	2.0	N.A.	0.1
UL (90-100)	0.2	N.A.	0.0
UH (100-180)	0.0	N.A.	0.0
Total	2395.3	N.A.	100.0

BUG Rating B1-U0*-G1

*Fixture has measured rating of U1 due to testing above 90 degrees and stray light from reflection off of the fixture body. Upon visual inspection of luminaire, it has a flat lens and opaque sides, there is no significant uplight (<0.5%), and it has therefore been assigned a value of U0. Consult factory for more information.



Grid Spacing: 5 ft.

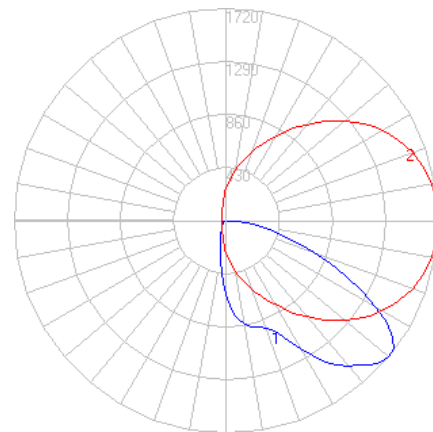
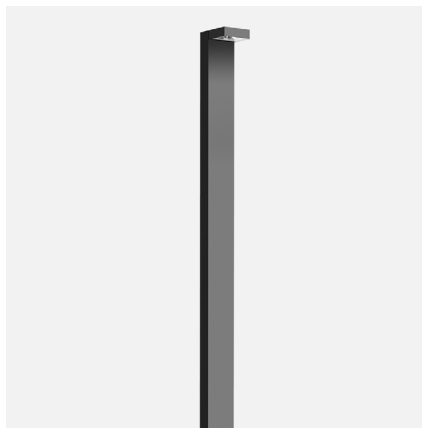


In the interest of product improvement, BEGA reserves the right to make technical changes without notice.

BEGA

File: 84274K27_BEGA_IES.ies

TEST: BE_84274K4
 TEST LAB: BEGA
 DATE: 08/25/2016
 LUMINAIRE: 84274 K27
 LAMP: 17.6W LED



Characteristics

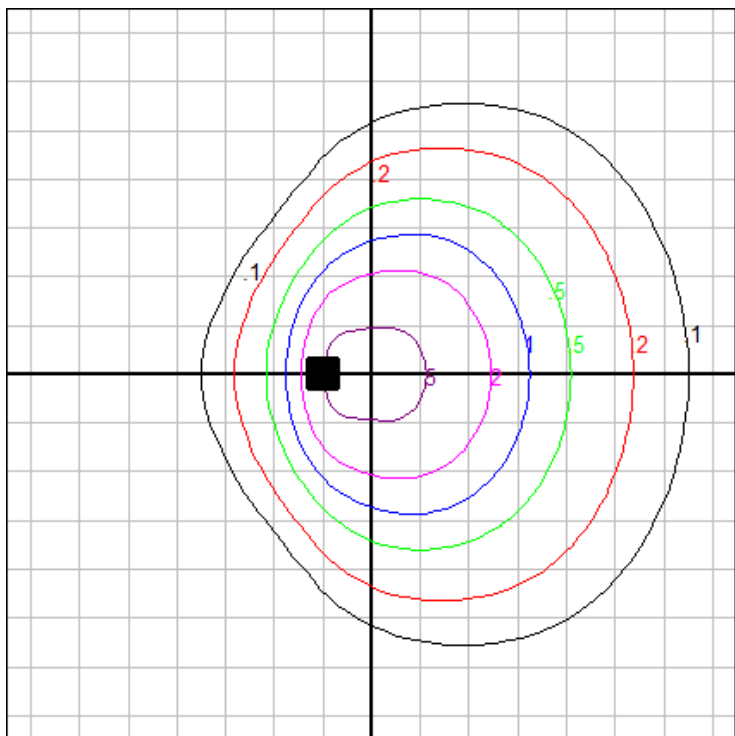
IES Classification	Type III
Longitudinal Classification	Very Short
Lumens Per Lamp	N.A. (absolute)
Total Lamp Lumens	N.A. (absolute)
Luminaire Lumens	2345
Downward Total Efficiency	N.A.
Total Luminaire Efficiency	N.A.
Luminaire Efficacy Rating (LER)	107
Total Luminaire Watts	22
Ballast Factor	1.00
Upward Waste Light Ratio	0.00
Max. Cd.	1719.756 (360H, 50V)
Max. Cd. (<90 Vert.)	1719.756 (360H, 50V)
Max. Cd. (At 90 Deg. Vert.)	4.185 (0.2%Lum)
Max. Cd. (80 to <90 Deg. Vert.)	251.937 (10.7%Lum)
Cutoff Classification (deprecated)	N.A. (absolute)

Lum. Classification System (LCS)

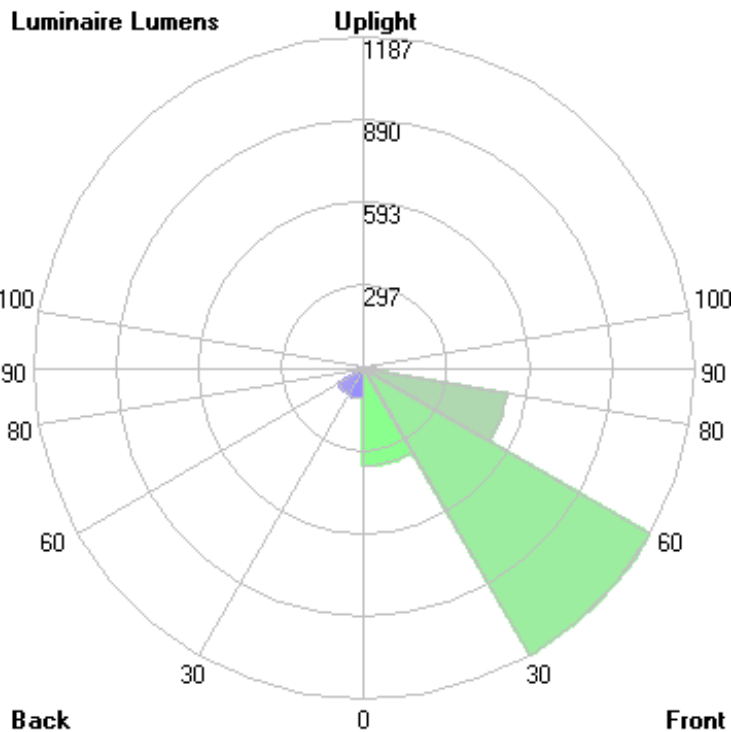
LCS Zone	Lumens	%Lamp	%Lum
FL (0-30)	349.8	N.A.	14.9
FM (30-60)	1186.9	N.A.	50.6
FH (60-80)	521.5	N.A.	22.2
FVH (80-90)	39.4	N.A.	1.7
BL (0-30)	110.6	N.A.	4.7
BM (30-60)	106.3	N.A.	4.5
BH (60-80)	28.3	N.A.	1.2
BVH (80-90)	2.0	N.A.	0.1
UL (90-100)	0.1	N.A.	0.0
UH (100-180)	0.0	N.A.	0.0
Total	2344.9	N.A.	100.0

BUG Rating B1-U0*-G1

*Fixture has measured rating of U1 due to testing above 90 degrees and stray light from reflection off of the fixture body. Upon visual inspection of luminaire, it has a flat lens and opaque sides, there is no significant uplight (<0.5%), and it has therefore been assigned a value of U0. Consult factory for more information.



Grid Spacing: 5 ft.



In the interest of product improvement, BEGA reserves the right to make technical changes without notice.