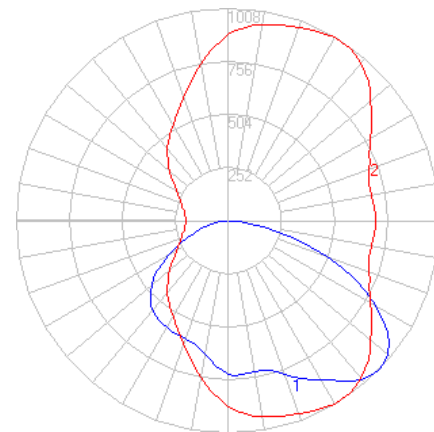
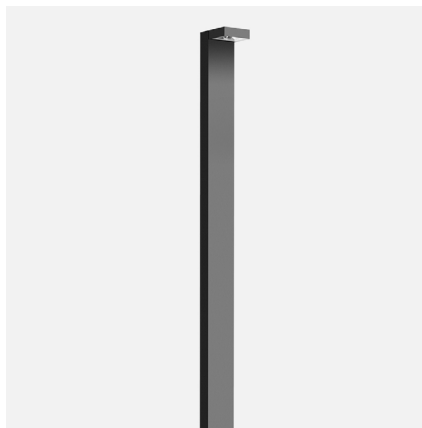


# BEGA

File: 84273K4\_BEGA\_IES.ies

TEST: BE\_84273K4  
 TEST LAB: BEGA  
 DATE: 04/25/2016  
 LUMINAIRE: 84273 K4  
 LAMP: 15.4W LED



## Characteristics

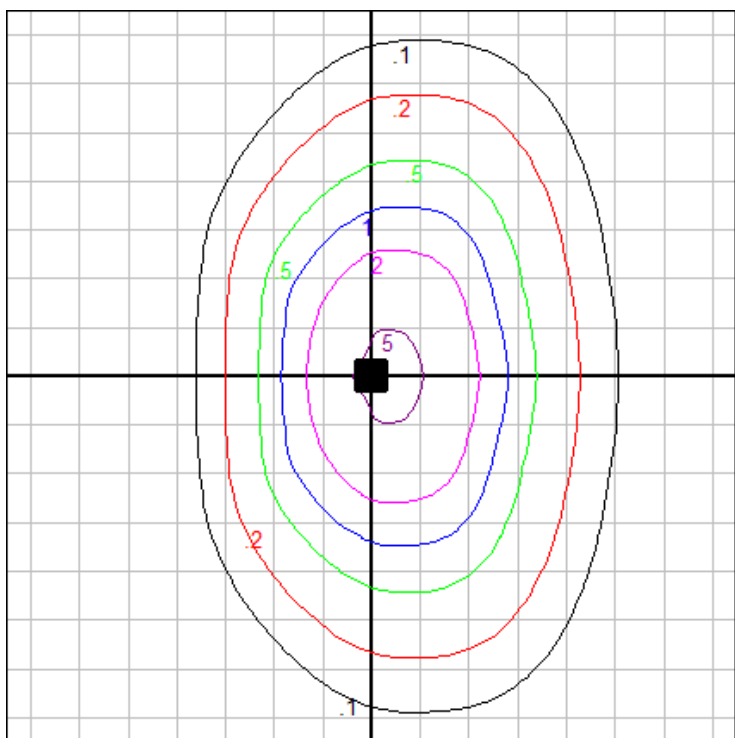
IES Classification	Type II
Longitudinal Classification	Very Short
Lumens Per Lamp	N.A. (absolute)
Total Lamp Lumens	N.A. (absolute)
Luminaire Lumens	2520
Downward Total Efficiency	N.A.
Total Luminaire Efficiency	N.A.
Luminaire Efficacy Rating (LER)	133
Total Luminaire Watts	19
Ballast Factor	1.00
Upward Waste Light Ratio	0.00
Max. Cd.	1008 (300H, 45V)
Max. Cd. (<90 Vert.)	1008 (300H, 45V)
Max. Cd. (At 90 Deg. Vert.)	.5 (0.0%Lum)
Max. Cd. (80 to <90 Deg. Vert.)	194.1 (7.7%Lum)
Cutoff Classification (deprecated)	N.A. (absolute)

## Lum. Classification System (LCS)

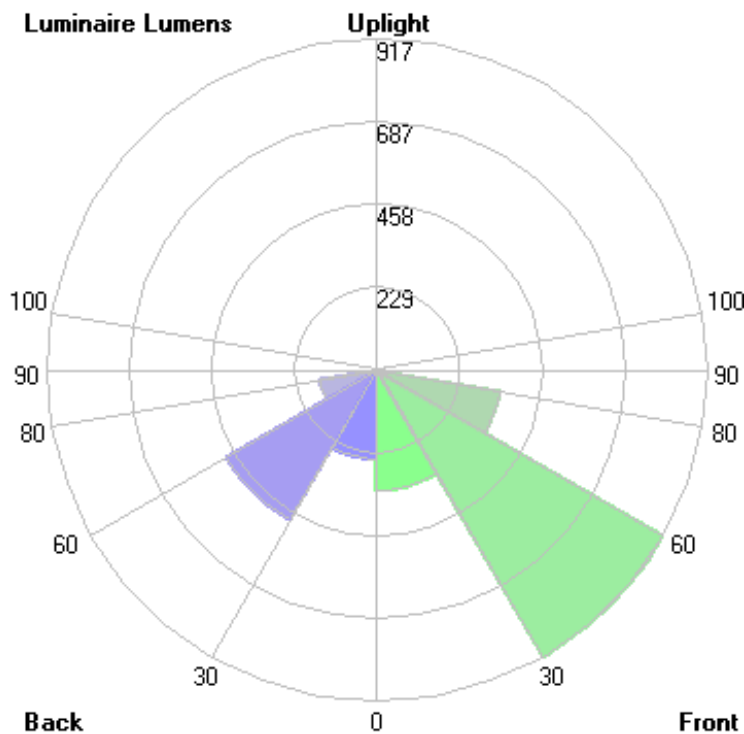
LCS Zone	Lumens	%Lamp	%Lum
FL (0-30)	333.3	N.A.	13.2
FM (30-60)	916.6	N.A.	36.4
FH (60-80)	346.8	N.A.	13.8
FVH (80-90)	23.7	N.A.	0.9
BL (0-30)	247.8	N.A.	9.8
BM (30-60)	480.4	N.A.	19.1
BH (60-80)	159.4	N.A.	6.3
BVH (80-90)	11.6	N.A.	0.5
UL (90-100)	< 0.05	N.A.	0.0
UH (100-180)	0.0	N.A.	0.0
Total	2519.6	N.A.	100.0

## BUG Rating B1-U0\*-G1

\*Fixture has measured rating of U1 due to testing above 90 degrees and stray light from reflection off of the fixture body. Upon visual inspection of luminaire, it has a flat lens and opaque sides, there is no significant uplight (<0.5%), and it has therefore been assigned a value of U0. Consult factory for more information.



Grid Spacing: 5 ft.

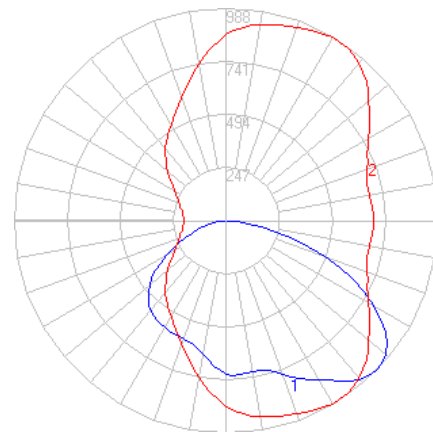
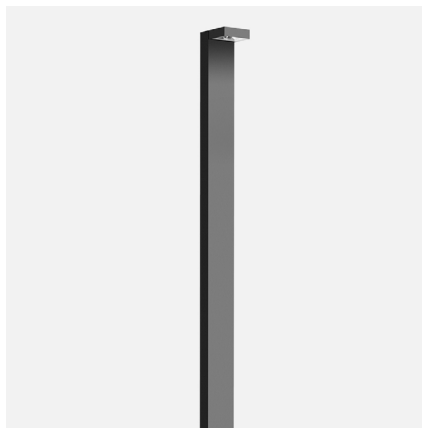


In the interest of product improvement, BEGA reserves the right to make technical changes without notice.

# BEGA

File: 84273K35\_BEGA\_IES.ies

TEST: BE\_84273K4  
 TEST LAB: BEGA  
 DATE: 04/25/2016  
 LUMINAIRE: 84273 K35  
 LAMP: 15.4W LED



## Characteristics

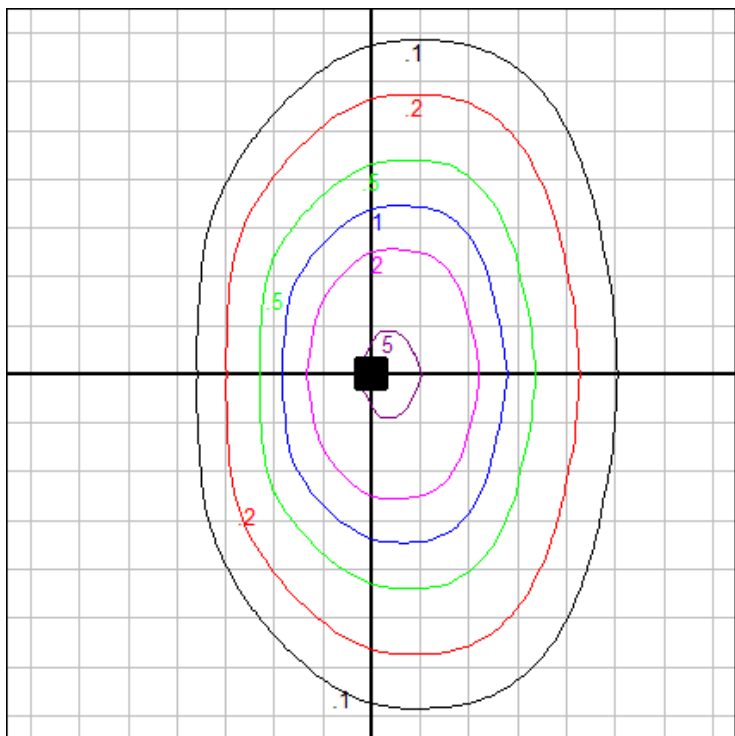
IES Classification	Type II
Longitudinal Classification	Very Short
Lumens Per Lamp	N.A. (absolute)
Total Lamp Lumens	N.A. (absolute)
Luminaire Lumens	2469
Downward Total Efficiency	N.A.
Total Luminaire Efficiency	N.A.
Luminaire Efficacy Rating (LER)	130
Total Luminaire Watts	19
Ballast Factor	1.00
Upward Waste Light Ratio	0.00
Max. Cd.	987.84 (300H, 45V)
Max. Cd. (<90 Vert.)	987.84 (300H, 45V)
Max. Cd. (At 90 Deg. Vert.)	.49 (0.0%Lum)
Max. Cd. (80 to <90 Deg. Vert.)	190.218 (7.7%Lum)
Cutoff Classification (deprecated)	N.A. (absolute)

## Lum. Classification System (LCS)

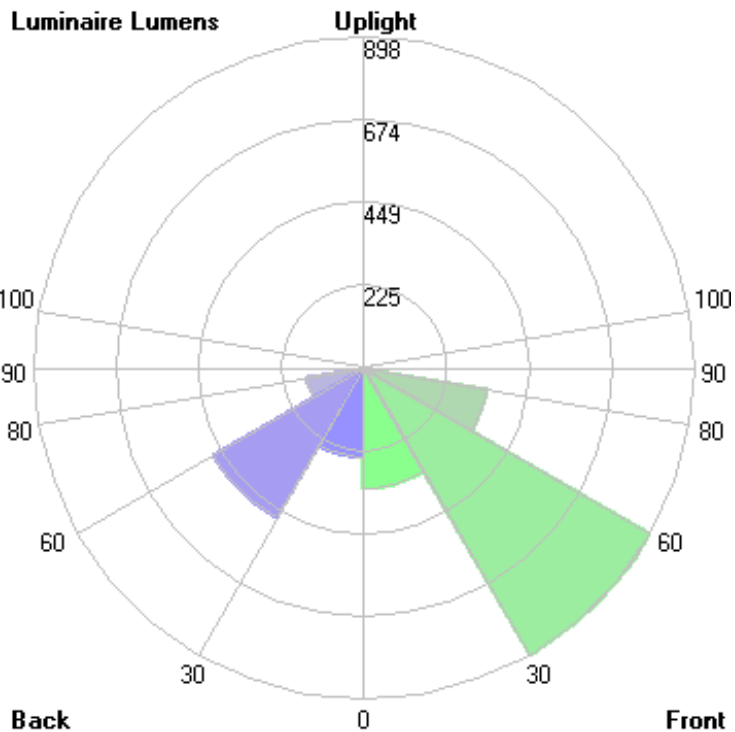
LCS Zone	Lumens	%Lamp	%Lum
FL (0-30)	326.6	N.A.	13.2
FM (30-60)	898.3	N.A.	36.4
FH (60-80)	339.9	N.A.	13.8
FVH (80-90)	23.2	N.A.	0.9
BL (0-30)	242.9	N.A.	9.8
BM (30-60)	470.8	N.A.	19.1
BH (60-80)	156.2	N.A.	6.3
BVH (80-90)	11.4	N.A.	0.5
UL (90-100)	< 0.05	N.A.	0.0
UH (100-180)	0.0	N.A.	0.0
Total	2469.3	N.A.	100.0

## BUG Rating B1-U0\*-G1

\*Fixture has measured rating of U1 due to testing above 90 degrees and stray light from reflection off of the fixture body. Upon visual inspection of luminaire, it has a flat lens and opaque sides, there is no significant uplight (<0.5%), and it has therefore been assigned a value of U0. Consult factory for more information.



Grid Spacing: 5 ft.

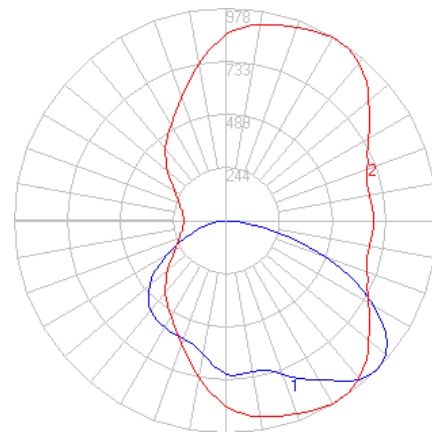
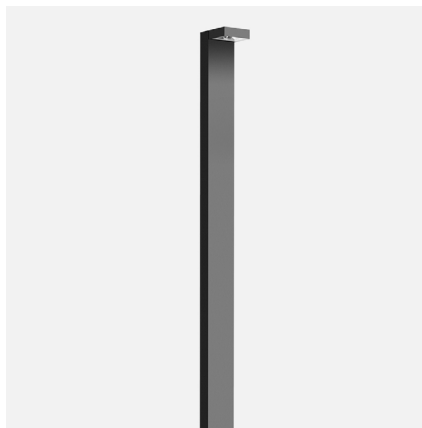


In the interest of product improvement, BEGA reserves the right to make technical changes without notice.

# BEGA

File: 84273K3\_BEGA\_IES.ies

TEST: BE\_84273K4  
 TEST LAB: BEGA  
 DATE: 04/25/2016  
 LUMINAIRE: 84273 K3  
 LAMP: 15.4W LED



## Characteristics

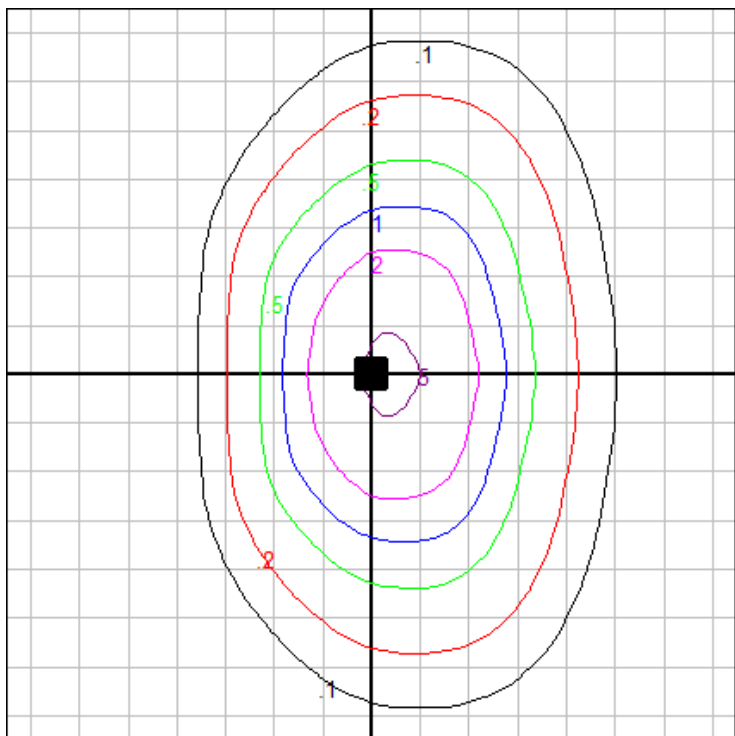
IES Classification	Type II
Longitudinal Classification	Very Short
Lumens Per Lamp	N.A. (absolute)
Total Lamp Lumens	N.A. (absolute)
Luminaire Lumens	2444
Downward Total Efficiency	N.A.
Total Luminaire Efficiency	N.A.
Luminaire Efficacy Rating (LER)	129
Total Luminaire Watts	19
Ballast Factor	1.00
Upward Waste Light Ratio	0.00
Max. Cd.	977.76 (300H, 45V)
Max. Cd. (<90 Vert.)	977.76 (300H, 45V)
Max. Cd. (At 90 Deg. Vert.)	.485 (0.0%Lum)
Max. Cd. (80 to <90 Deg. Vert.)	188.277 (7.7%Lum)
Cutoff Classification (deprecated)	N.A. (absolute)

## Lum. Classification System (LCS)

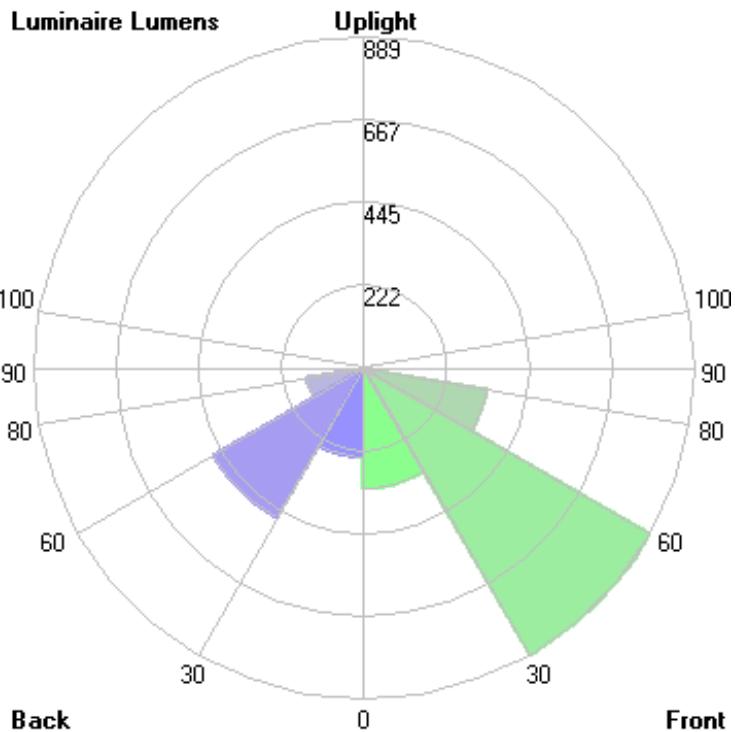
LCS Zone	Lumens	%Lamp	%Lum
FL (0-30)	323.3	N.A.	13.2
FM (30-60)	889.1	N.A.	36.4
FH (60-80)	336.4	N.A.	13.8
FVH (80-90)	23.0	N.A.	0.9
BL (0-30)	240.4	N.A.	9.8
BM (30-60)	466.0	N.A.	19.1
BH (60-80)	154.6	N.A.	6.3
BVH (80-90)	11.3	N.A.	0.5
UL (90-100)	< 0.05	N.A.	0.0
UH (100-180)	0.0	N.A.	0.0
Total	2444.1	N.A.	100.0

## BUG Rating B1-U0\*-G1

\*Fixture has measured rating of U1 due to testing above 90 degrees and stray light from reflection off of the fixture body. Upon visual inspection of luminaire, it has a flat lens and opaque sides, there is no significant uplight (<0.5%), and it has therefore been assigned a value of U0. Consult factory for more information.



Grid Spacing: 5 ft.

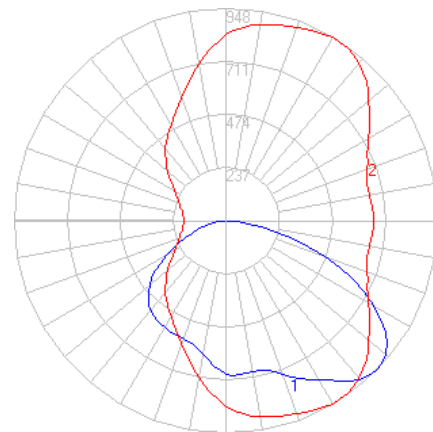
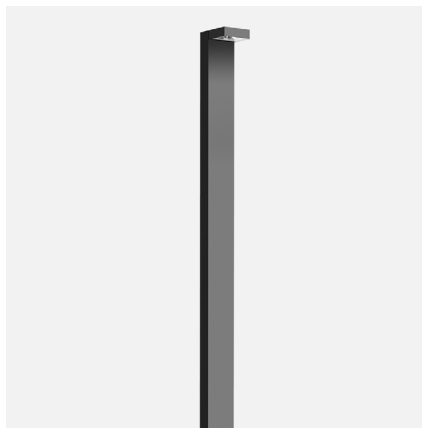


In the interest of product improvement, BEGA reserves the right to make technical changes without notice.

# BEGA

File: 84273K27\_BEGA\_IES.ies

TEST: BE\_84273K4  
 TEST LAB: BEGA  
 DATE: 04/25/2016  
 LUMINAIRE: 84273 K27  
 LAMP: 15.4W LED



## Characteristics

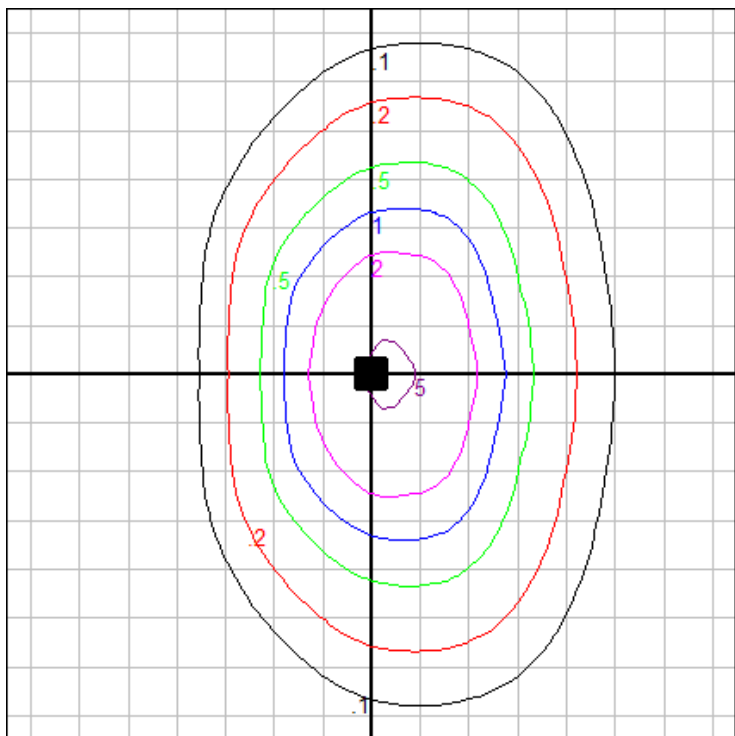
IES Classification	Type II
Longitudinal Classification	Very Short
Lumens Per Lamp	N.A. (absolute)
Total Lamp Lumens	N.A. (absolute)
Luminaire Lumens	2368
Downward Total Efficiency	N.A.
Total Luminaire Efficiency	N.A.
Luminaire Efficacy Rating (LER)	125
Total Luminaire Watts	19
Ballast Factor	1.00
Upward Waste Light Ratio	0.00
Max. Cd.	947.52 (300H, 45V)
Max. Cd. (<90 Vert.)	947.52 (300H, 45V)
Max. Cd. (At 90 Deg. Vert.)	.47 (0.0%Lum)
Max. Cd. (80 to <90 Deg. Vert.)	182.454 (7.7%Lum)
Cutoff Classification (deprecated)	N.A. (absolute)

## Lum. Classification System (LCS)

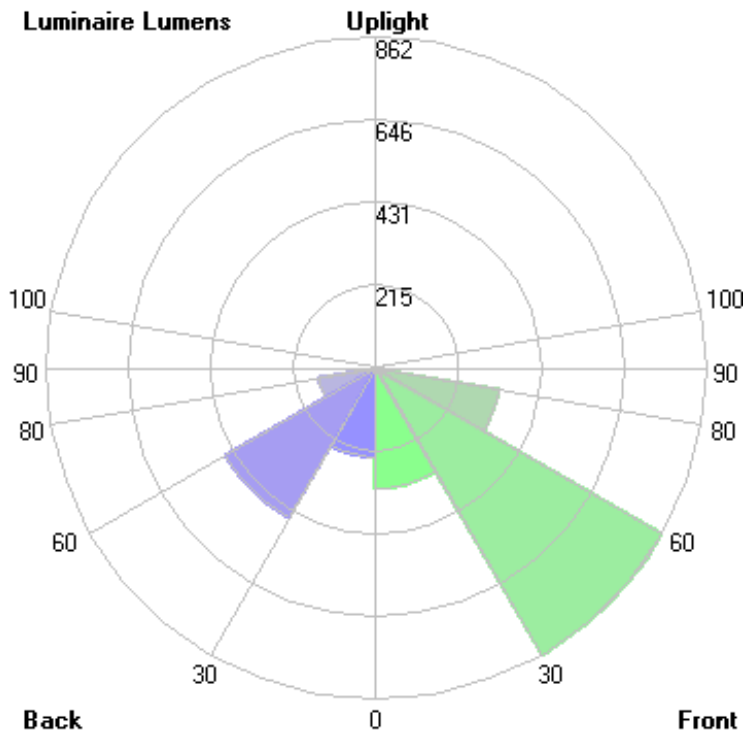
LCS Zone	Lumens	%Lamp	%Lum
FL (0-30)	313.3	N.A.	13.2
FM (30-60)	861.6	N.A.	36.4
FH (60-80)	326.0	N.A.	13.8
FVH (80-90)	22.3	N.A.	0.9
BL (0-30)	232.9	N.A.	9.8
BM (30-60)	451.6	N.A.	19.1
BH (60-80)	149.8	N.A.	6.3
BVH (80-90)	10.9	N.A.	0.5
UL (90-100)	< 0.05	N.A.	0.0
UH (100-180)	0.0	N.A.	0.0
Total	2368.4	N.A.	100.0

## BUG Rating B1-U0\*-G1

\*Fixture has measured rating of U1 due to testing above 90 degrees and stray light from reflection off of the fixture body. Upon visual inspection of luminaire, it has a flat lens and opaque sides, there is no significant uplight (<0.5%), and it has therefore been assigned a value of U0. Consult factory for more information.



Grid Spacing: 5 ft.



In the interest of product improvement, BEGA reserves the right to make technical changes without notice.