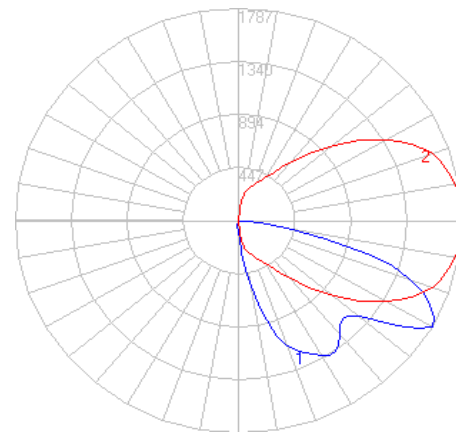


# BEGA

File: 84252K4\_BEGA\_IES.ies

TEST: BE\_84252K3  
 TEST LAB: BEGA  
 DATE: 01/09/2019  
 LUMINAIRE: 84 252K4  
 LAMP: 12.6W LED



## Characteristics

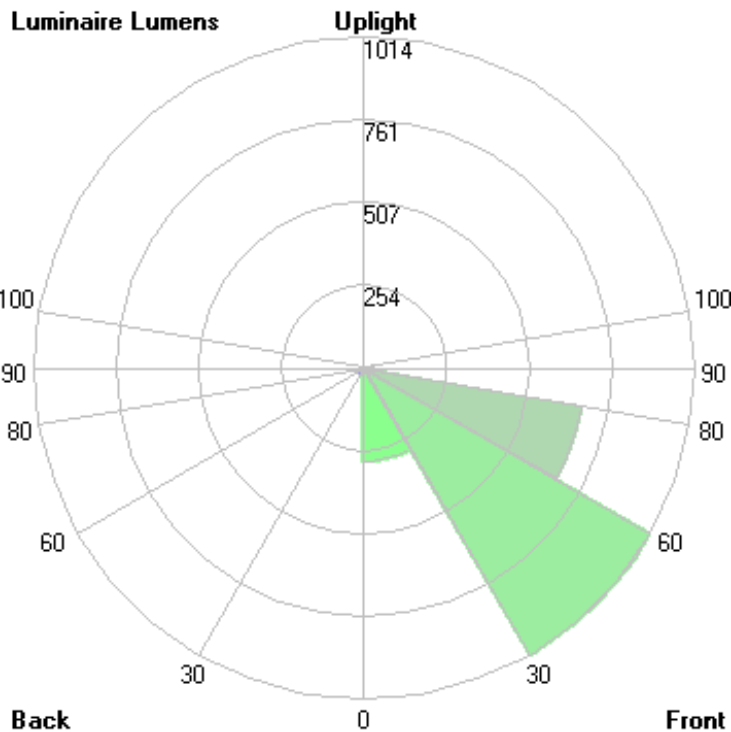
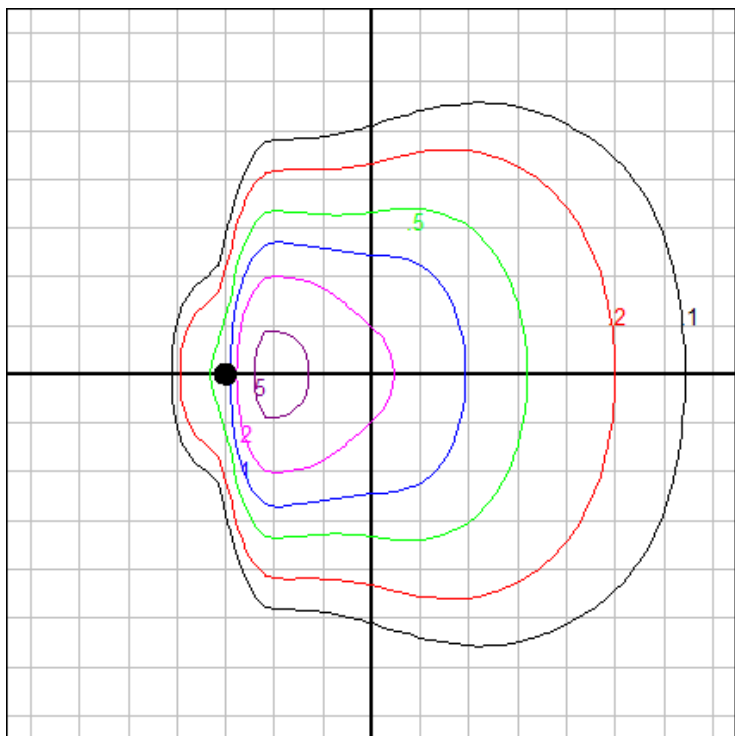
IES Classification	Type IV
Longitudinal Classification	Very Short
Lumens Per Lamp	N.A. (absolute)
Total Lamp Lumens	N.A. (absolute)
Luminaire Lumens	2050
Downward Total Efficiency	N.A.
Total Luminaire Efficiency	N.A.
Luminaire Efficacy Rating (LER)	121
Total Luminaire Watts	17
Ballast Factor	1.00
Upward Waste Light Ratio	0.00
Max. Cd.	1787.04 (360H, 60V)
Max. Cd. (<90 Vert.)	1787.04 (360H, 60V)
Max. Cd. (At 90 Deg. Vert.)	.204 (0.0%Lum)
Max. Cd. (80 to <90 Deg. Vert.)	400.35 (19.5%Lum)
Cutoff Classification (deprecated)	N.A. (absolute)

## Lum. Classification System (LCS)

LCS Zone	Lumens	%Lamp	%Lum
FL (0-30)	286.5	N.A.	14.0
FM (30-60)	1014.4	N.A.	49.5
FH (60-80)	680.5	N.A.	33.2
FVH(80-90)	29.9	N.A.	1.5
BL (0-30)	23.3	N.A.	1.1
BM (30-60)	11.8	N.A.	0.6
BH (60-80)	2.8	N.A.	0.1
BVH(80-90)	0.6	N.A.	0.0
UL (90-100)	< 0.05	N.A.	0.0
UH (100-180)	0.0	N.A.	0.0
Total	2049.8	N.A.	100.0

## BUG Rating B0-U0\*-G1

\*Fixture has measured rating of U1 due to testing above 90 degrees and stray light from reflection off of the fixture body. Upon visual inspection of luminaire, it has a flat lens and opaque sides, there is no significant uplift (<0.5%), and it has therefore been assigned a value of U0. Consult factory for more information



Mounting height: 12 ft.

Grid spacing: 5 ft.

In the interest of product improvement, BEGA reserves the right to make technical changes without notice.

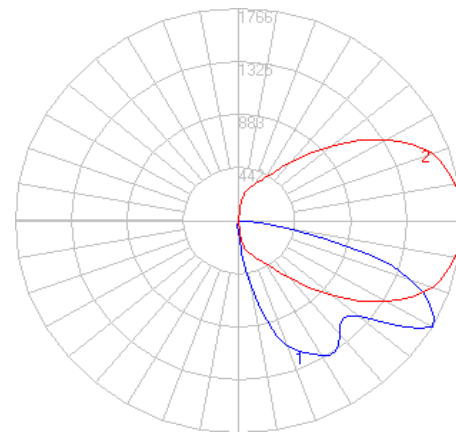
BEGA 1000 Bega Way, Carpinteria, CA 93013 (805)684-0533 Fax (805)566-9474 www.bega-us.com © Copyright BEGA-US 2021

9/7/2022

# BEGA

File: 84252K35\_BEGA\_IES.ies

TEST: BE\_84252K3  
 TEST LAB: BEGA  
 DATE: 01/09/2019  
 LUMINAIRE: 84 252K35  
 LAMP: 12.6W LED



## Characteristics

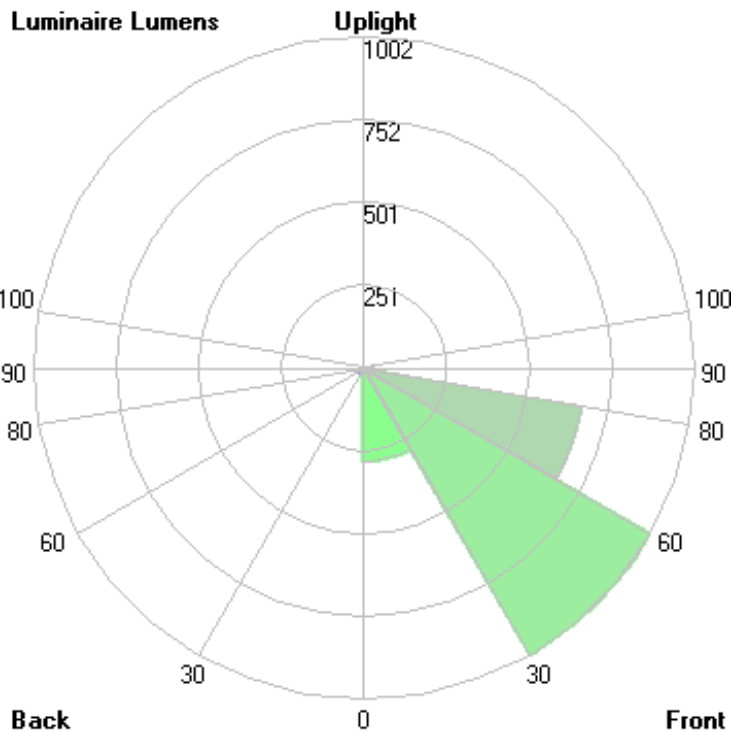
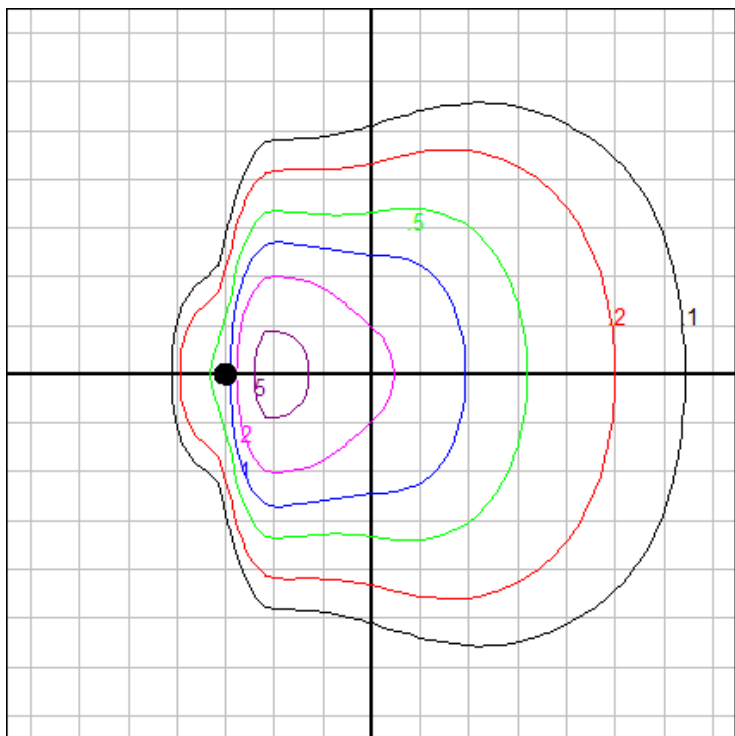
IES Classification	Type IV
Longitudinal Classification	Very Short
Lumens Per Lamp	N.A. (absolute)
Total Lamp Lumens	N.A. (absolute)
Luminaire Lumens	2026
Downward Total Efficiency	N.A.
Total Luminaire Efficiency	N.A.
Luminaire Efficacy Rating (LER)	119
Total Luminaire Watts	17
Ballast Factor	1.00
Upward Waste Light Ratio	0.00
Max. Cd.	1766.016 (360H, 60V)
Max. Cd. (<90 Vert.)	1766.016 (360H, 60V)
Max. Cd. (At 90 Deg. Vert.)	.202 (0.0%Lum)
Max. Cd. (80 to <90 Deg. Vert.)	395.64 (19.5%Lum)
Cutoff Classification (deprecated)	N.A. (absolute)

## Lum. Classification System (LCS)

LCS Zone	Lumens	%Lamp	%Lum
FL (0-30)	283.2	N.A.	14.0
FM (30-60)	1002.5	N.A.	49.5
FH (60-80)	672.5	N.A.	33.2
FVH(80-90)	29.6	N.A.	1.5
BL (0-30)	23.1	N.A.	1.1
BM (30-60)	11.6	N.A.	0.6
BH (60-80)	2.8	N.A.	0.1
BVH(80-90)	0.6	N.A.	0.0
UL (90-100)	< 0.05	N.A.	0.0
UH (100-180)	0.0	N.A.	0.0
Total	2025.9	N.A.	100.0

## BUG Rating B0-U0\*-G1

\*Fixture has measured rating of U1 due to testing above 90 degrees and stray light from reflection off of the fixture body. Upon visual inspection of luminaire, it has a flat lens and opaque sides, there is no significant uplift (<0.5%), and it has therefore been assigned a value of U0. Consult factory for more information



Mounting height: 12 ft.

Grid spacing: 5 ft.

In the interest of product improvement, BEGA reserves the right to make technical changes without notice.

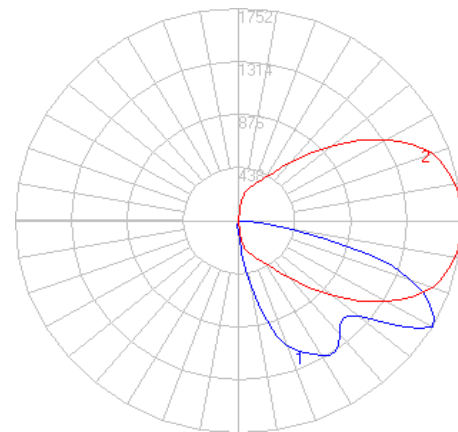
BEGA 1000 Bega Way, Carpinteria, CA 93013 (805)684-0533 Fax (805)566-9474 www.bega-us.com © Copyright BEGA-US 2021

9/7/2022

# BEGA

File: 84252K3\_BEGA\_IES.ies

TEST: BE\_84252K3  
 TEST LAB: BEGA  
 DATE: 01/09/2019  
 LUMINAIRE: 84 252K3  
 LAMP: 12.6W LED



## Characteristics

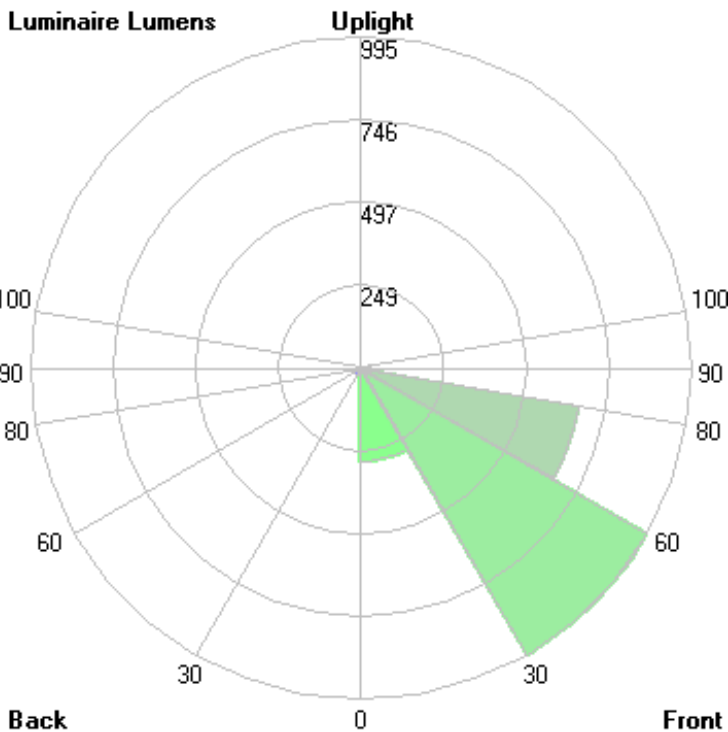
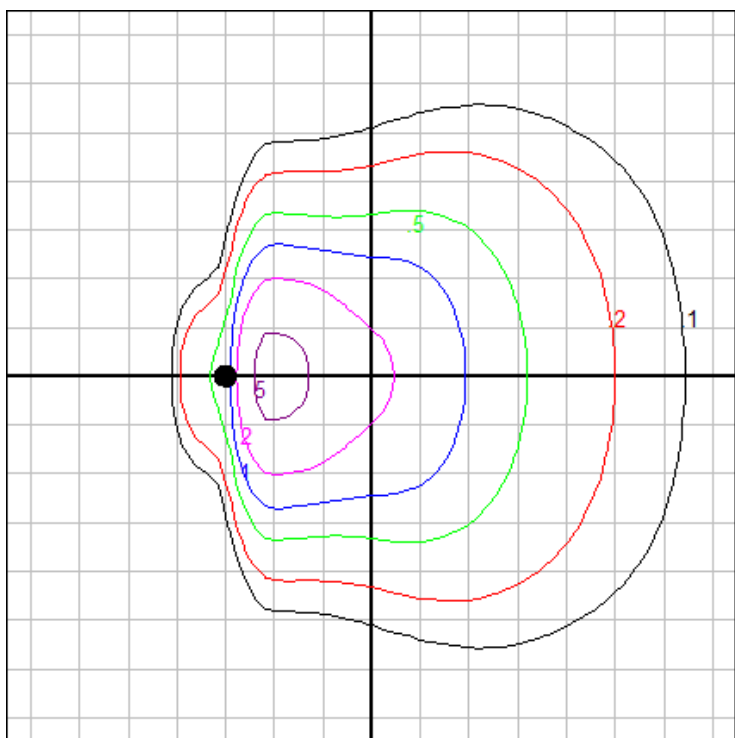
IES Classification	Type IV
Longitudinal Classification	Very Short
Lumens Per Lamp	N.A. (absolute)
Total Lamp Lumens	N.A. (absolute)
Luminaire Lumens	2010
Downward Total Efficiency	N.A.
Total Luminaire Efficiency	N.A.
Luminaire Efficacy Rating (LER)	118
Total Luminaire Watts	17
Ballast Factor	1.00
Upward Waste Light Ratio	0.00
Max. Cd.	1752 (360H, 60V)
Max. Cd. (<90 Vert.)	1752 (360H, 60V)
Max. Cd. (At 90 Deg. Vert.)	.2 (0.0%Lum)
Max. Cd. (80 to <90 Deg. Vert.)	392.5 (19.5%Lum)
Cutoff Classification (deprecated)	N.A. (absolute)

## Lum. Classification System (LCS)

LCS Zone	Lumens	%Lamp	%Lum
FL (0-30)	280.9	N.A.	14.0
FM (30-60)	994.5	N.A.	49.5
FH (60-80)	667.1	N.A.	33.2
FVH(80-90)	29.4	N.A.	1.5
BL (0-30)	22.9	N.A.	1.1
BM (30-60)	11.5	N.A.	0.6
BH (60-80)	2.7	N.A.	0.1
BVH(80-90)	0.6	N.A.	0.0
UL (90-100)	< 0.05	N.A.	0.0
UH (100-180)	0.0	N.A.	0.0
Total	2009.6	N.A.	100.0

## BUG Rating B0-U0\*-G1

\*Fixture has measured rating of U1 due to testing above 90 degrees and stray light from reflection off of the fixture body. Upon visual inspection of luminaire, it has a flat lens and opaque sides, there is no significant uplift (<0.5%), and it has therefore been assigned a value of U0. Consult factory for more information



Mounting height: 12 ft.

Grid spacing: 5 ft.

In the interest of product improvement, BEGA reserves the right to make technical changes without notice.

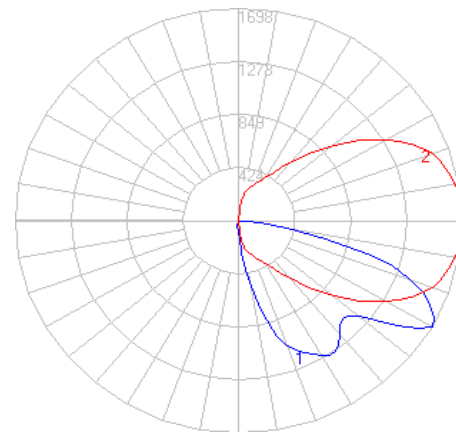
BEGA 1000 Bega Way, Carpinteria, CA 93013 (805)684-0533 Fax (805)566-9474 www.bega-us.com © Copyright BEGA-US 2021

9/7/2022

# BEGA

File: 84252K27\_BEGA\_IES.ies

TEST: BE\_84252K3  
 TEST LAB: BEGA  
 DATE: 01/09/2019  
 LUMINAIRE: 84 252K27  
 LAMP: 12.6W LED



## Characteristics

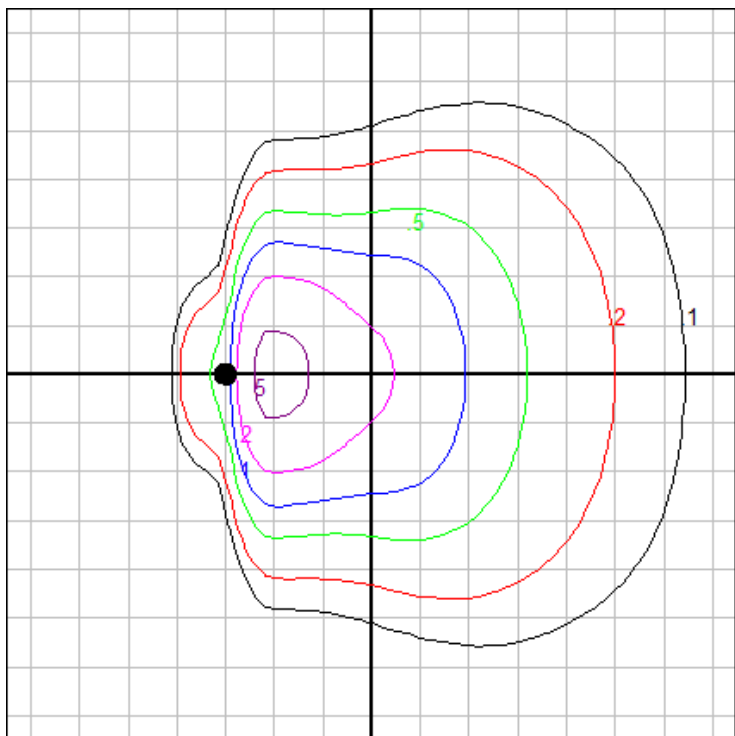
IES Classification	Type IV
Longitudinal Classification	Very Short
Lumens Per Lamp	N.A. (absolute)
Total Lamp Lumens	N.A. (absolute)
Luminaire Lumens	1947
Downward Total Efficiency	N.A.
Total Luminaire Efficiency	N.A.
Luminaire Efficacy Rating (LER)	115
Total Luminaire Watts	17
Ballast Factor	1.00
Upward Waste Light Ratio	0.00
Max. Cd.	1697.688 (360H, 60V)
Max. Cd. (<90 Vert.)	1697.688 (360H, 60V)
Max. Cd. (At 90 Deg. Vert.)	.194 (0.0%Lum)
Max. Cd. (80 to <90 Deg. Vert.)	380.332 (19.5%Lum)
Cutoff Classification (deprecated)	N.A. (absolute)

## Lum. Classification System (LCS)

LCS Zone	Lumens	%Lamp	%Lum
FL (0-30)	272.2	N.A.	14.0
FM (30-60)	963.7	N.A.	49.5
FH (60-80)	646.5	N.A.	33.2
FVH(80-90)	28.4	N.A.	1.5
BL (0-30)	22.2	N.A.	1.1
BM (30-60)	11.2	N.A.	0.6
BH (60-80)	2.6	N.A.	0.1
BVH(80-90)	0.6	N.A.	0.0
UL (90-100)	< 0.05	N.A.	0.0
UH (100-180)	0.0	N.A.	0.0
Total	1947.4	N.A.	100.0

## BUG Rating B0-U0\*-G1

\*Fixture has measured rating of U1 due to testing above 90 degrees and stray light from reflection off of the fixture body. Upon visual inspection of luminaire, it has a flat lens and opaque sides, there is no significant uplift (<0.5%), and it has therefore been assigned a value of U0. Consult factory for more information

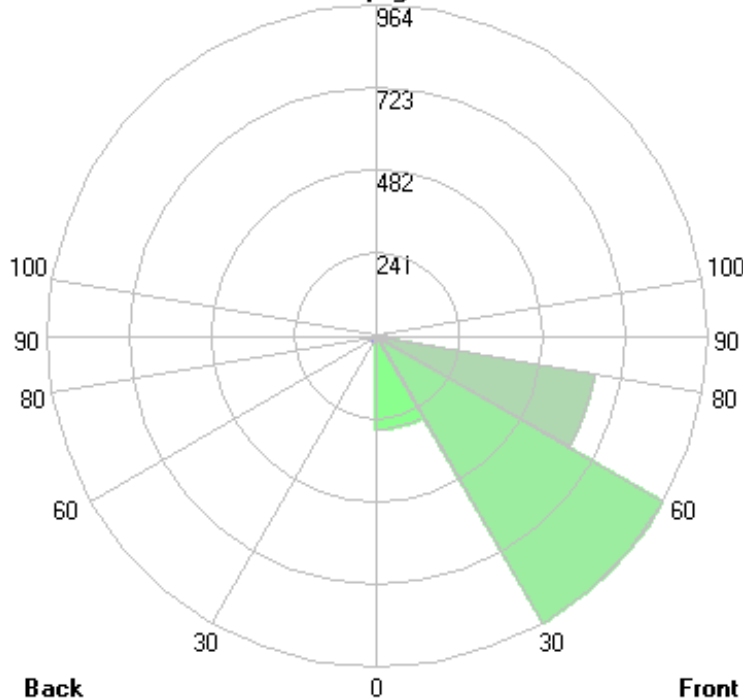


Mounting height: 12 ft.

Grid spacing: 5 ft.

## Luminaire Lumens

## Uplight

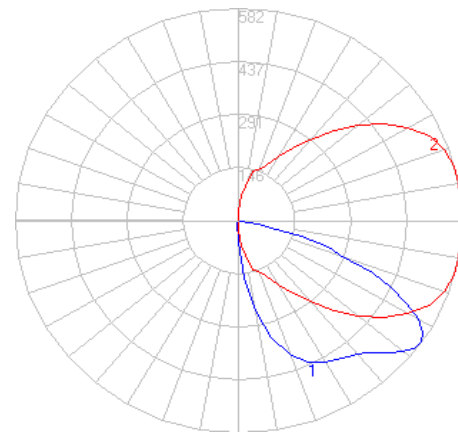


In the interest of product improvement, BEGA reserves the right to make technical changes without notice.

# BEGA

File: 84252AMB\_BEGA\_IES.ies

TEST: L102210701  
 TEST LAB: LIGHT LABORATORY  
 DATE: 10/17/2022  
 LUMINAIRE: 84 252AMB  
 LAMP: 10.6W LED (Amber LED)



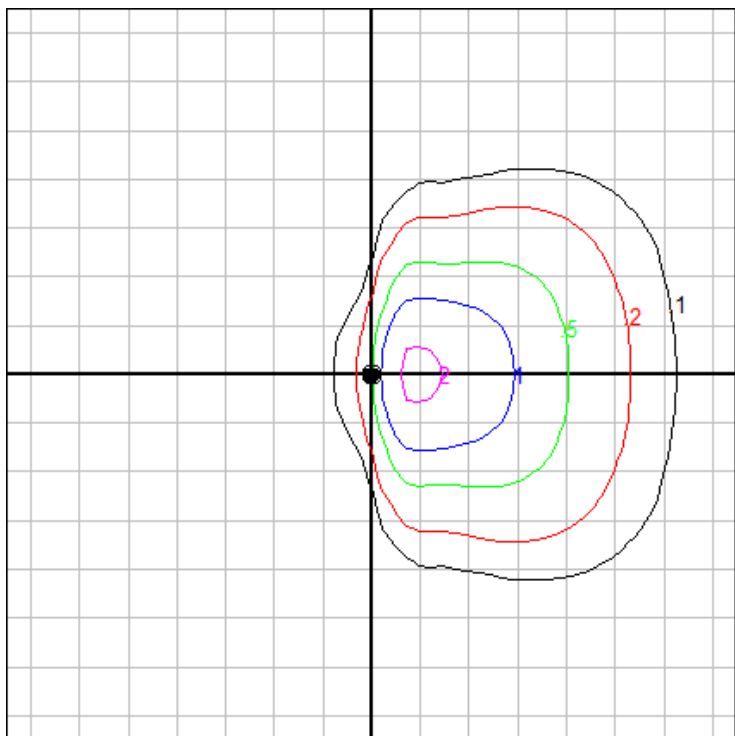
### Characteristics

IES Classification	Type III
Longitudinal Classification	Very Short
Lumens Per Lamp	N.A. (absolute)
Total Lamp Lumens	N.A. (absolute)
Luminaire Lumens	704
Downward Total Efficiency	N.A.
Total Luminaire Efficiency	N.A.
Luminaire Efficacy Rating (LER)	53
Total Luminaire Watts	13.16
Ballast Factor	1.00
Upward Waste Light Ratio	0.00
Max. Cd.	582 (10H, 55V)
Max. Cd. (<90 Vert.)	582 (10H, 55V)
Max. Cd. (At 90 Deg. Vert.)	0 (0.0%Lum)
Max. Cd. (80 to <90 Deg. Vert.)	51 (7.2%Lum)
Cutoff Classification (deprecated)	N.A. (absolute)

### Lum. Classification System (LCS)

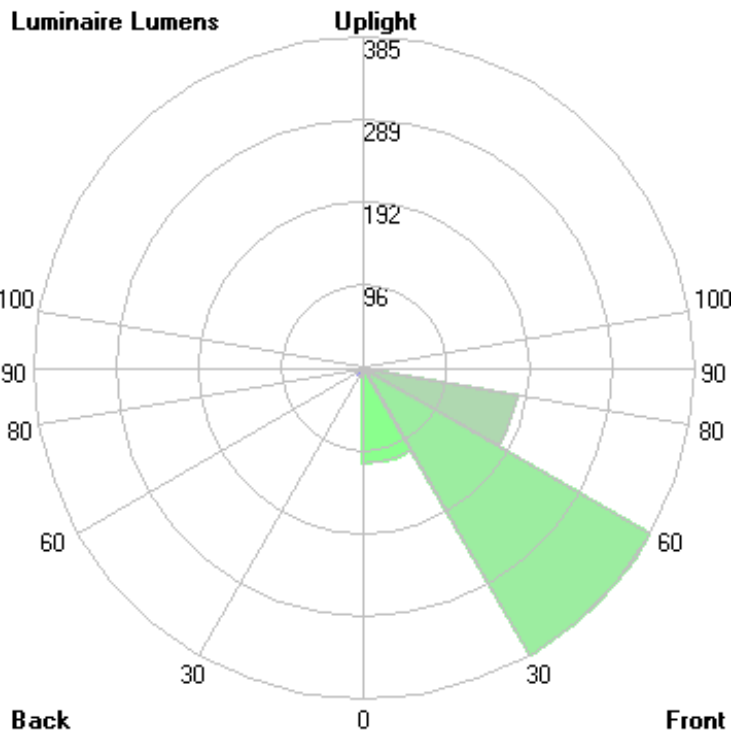
LCS Zone	Lumens	%Lamp	%Lum
FL (0-30)	110.2	N.A.	15.7
FM (30-60)	384.7	N.A.	54.7
FH (60-80)	181.1	N.A.	25.7
FVH(80-90)	4.7	N.A.	0.7
BL (0-30)	10.3	N.A.	1.5
BM (30-60)	8.9	N.A.	1.3
BH (60-80)	3.0	N.A.	0.4
BVH(80-90)	0.8	N.A.	0.1
UL (90-100)	0.0	N.A.	0.0
UH (100-180)	0.0	N.A.	0.0
Total	703.7	N.A.	100.0

**BUG Rating B0-U0-G0**



Mounting height: 12 ft.

Grid spacing: 5 ft.



In the interest of product improvement, BEGA reserves the right to make technical changes without notice.