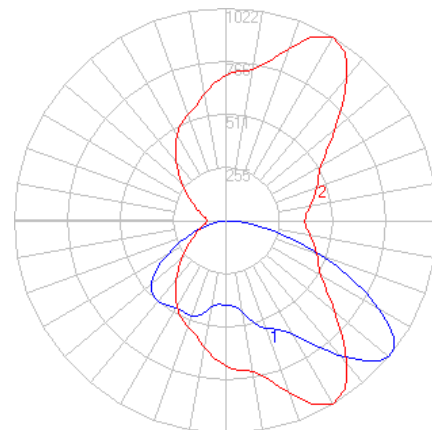


# BEGA

File: 84245K4\_BEGA\_IES.ies

TEST: BE\_84245K4  
 TEST LAB: BEGA  
 DATE: 04/25/2019  
 LUMINAIRE: 84 245K4  
 LAMP: 13.6W LED



## Characteristics

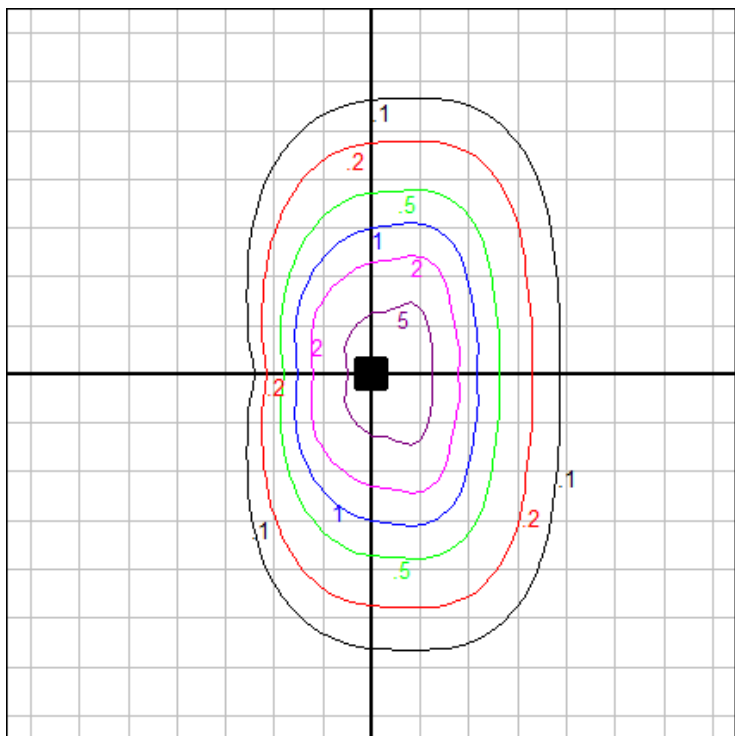
IES Classification	Type II
Longitudinal Classification	Short
Lumens Per Lamp	N.A. (absolute)
Total Lamp Lumens	N.A. (absolute)
Luminaire Lumens	2109
Downward Total Efficiency	N.A.
Total Luminaire Efficiency	N.A.
Luminaire Efficacy Rating (LER)	124
Total Luminaire Watts	17
Ballast Factor	1.00
Upward Waste Light Ratio	0.00
Max. Cd.	1021.9 (300H, 50V)
Max. Cd. (<90 Vert.)	1021.9 (300H, 50V)
Max. Cd. (At 90 Deg. Vert.)	.3 (0.0%Lum)
Max. Cd. (80 to <90 Deg. Vert.)	182.9 (8.7%Lum)
Cutoff Classification (deprecated)	N.A. (absolute)

## Lum. Classification System (LCS)

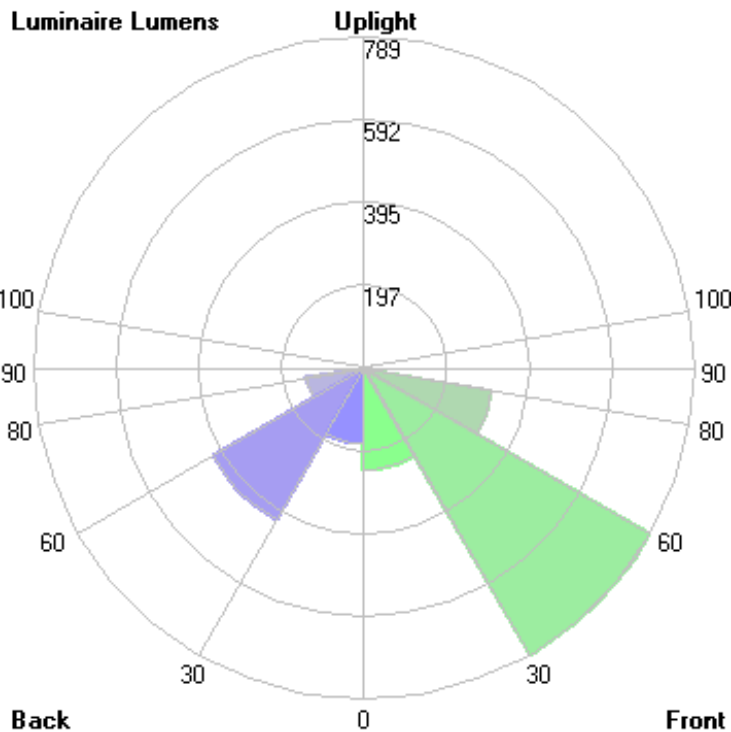
LCS Zone	Lumens	%Lamp	%Lum
FL (0-30)	241.7	N.A.	11.5
FM (30-60)	789.1	N.A.	37.4
FH (60-80)	310.3	N.A.	14.7
FVH (80-90)	20.5	N.A.	1.0
BL (0-30)	181.1	N.A.	8.6
BM (30-60)	418.0	N.A.	19.8
BH (60-80)	139.3	N.A.	6.6
BVH (80-90)	9.2	N.A.	0.4
UL (90-100)	< 0.05	N.A.	0.0
UH (100-180)	0.0	N.A.	0.0
<b>Total</b>	<b>2109.2</b>	<b>N.A.</b>	<b>100.0</b>

**BUG Rating B1-U0\*-G1**

\*Fixture has measured rating of U1 due to testing above 90 degrees and stray light from reflection off of the fixture body. Upon visual inspection of luminaire, it has a flat lens and opaque sides, there is no significant uplight (<0.5%), and it has therefore been assigned a value of U0. Consult factory for more information.



Grid Spacing: 5 ft.

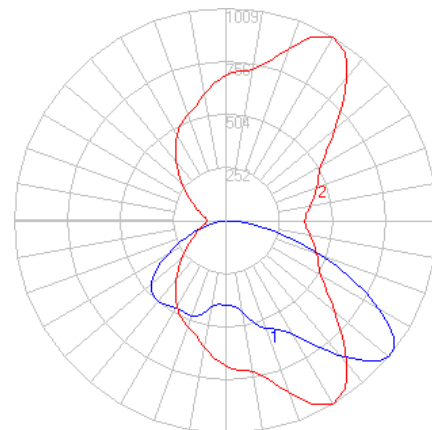


In the interest of product improvement, BEGA reserves the right to make technical changes without notice.

# BEGA

File: 84245K35\_BEGA\_IES.ies

TEST: BE\_84245K4  
 TEST LAB: BEGA  
 DATE: 04/25/2019  
 LUMINAIRE: 84 245K35  
 LAMP: 13.6W LED



## Characteristics

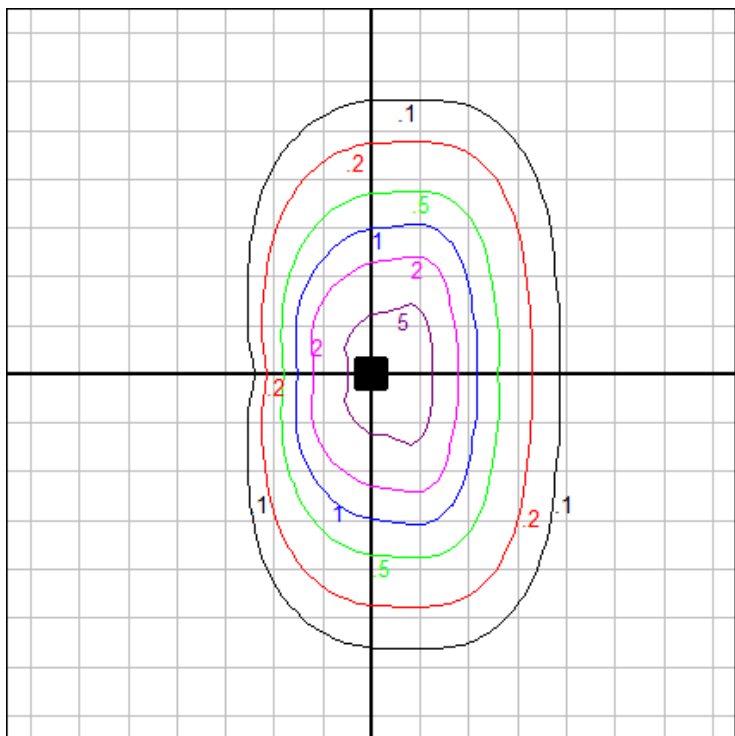
IES Classification	Type II
Longitudinal Classification	Short
Lumens Per Lamp	N.A. (absolute)
Total Lamp Lumens	N.A. (absolute)
Luminaire Lumens	2082
Downward Total Efficiency	N.A.
Total Luminaire Efficiency	N.A.
Luminaire Efficacy Rating (LER)	122
Total Luminaire Watts	17
Ballast Factor	1.00
Upward Waste Light Ratio	0.00
Max. Cd.	1008.615 (300H, 50V)
Max. Cd. (<90 Vert.)	1008.615 (300H, 50V)
Max. Cd. (At 90 Deg. Vert.)	.296 (0.0%Lum)
Max. Cd. (80 to <90 Deg. Vert.)	180.522 (8.7%Lum)
Cutoff Classification (deprecated)	N.A. (absolute)

## Lum. Classification System (LCS)

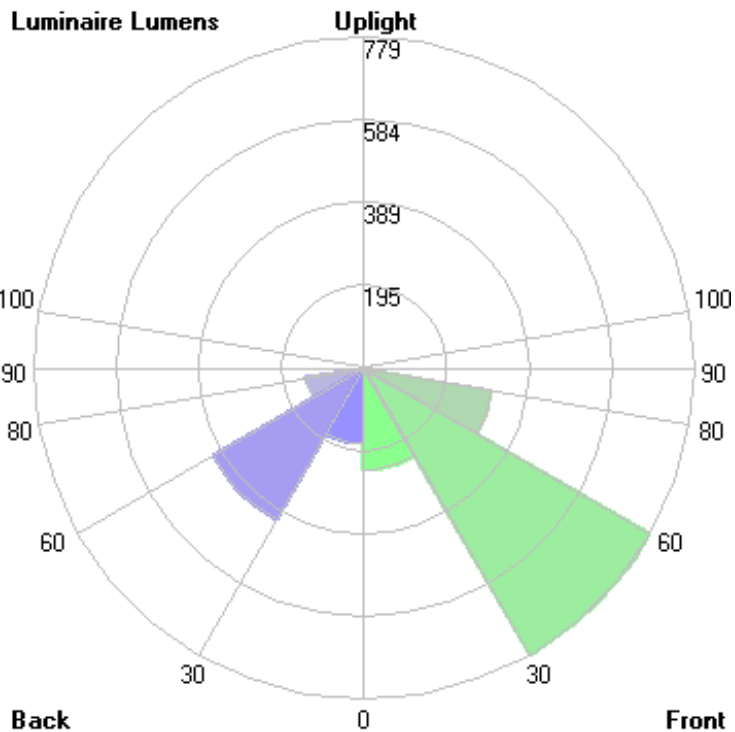
LCS Zone	Lumens	%Lamp	%Lum
FL (0-30)	238.5	N.A.	11.5
FM (30-60)	778.8	N.A.	37.4
FH (60-80)	306.3	N.A.	14.7
FVH (80-90)	20.2	N.A.	1.0
BL (0-30)	178.7	N.A.	8.6
BM (30-60)	412.6	N.A.	19.8
BH (60-80)	137.4	N.A.	6.6
BVH (80-90)	9.1	N.A.	0.4
UL (90-100)	< 0.05	N.A.	0.0
UH (100-180)	0.0	N.A.	0.0
<b>Total</b>	<b>2081.6</b>	<b>N.A.</b>	<b>100.0</b>

**BUG Rating B1-U0\*-G1**

\*Fixture has measured rating of U1 due to testing above 90 degrees and stray light from reflection off of the fixture body. Upon visual inspection of luminaire, it has a flat lens and opaque sides, there is no significant uplight (<0.5%), and it has therefore been assigned a value of U0. Consult factory for more information.



Grid Spacing: 5 ft.

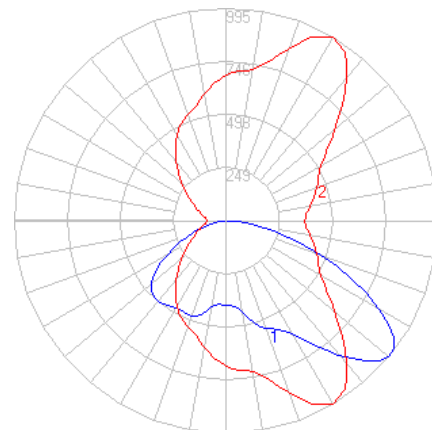


In the interest of product improvement, BEGA reserves the right to make technical changes without notice.

# BEGA

File: 84245K3\_BEGA\_IES.ies

TEST: BE\_84245K4  
 TEST LAB: BEGA  
 DATE: 04/25/2019  
 LUMINAIRE: 84 245K3  
 LAMP: 13.6W LED



## Characteristics

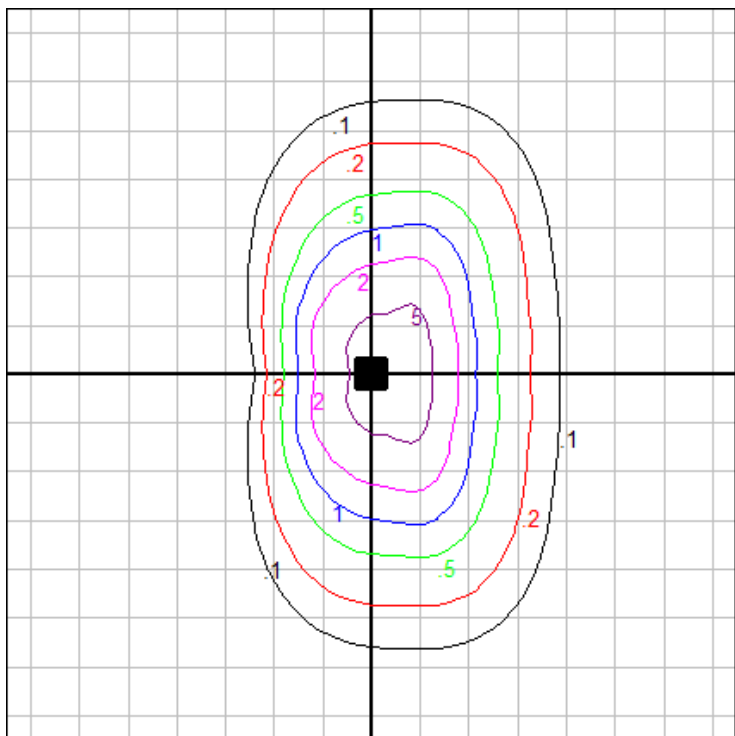
IES Classification	Type II
Longitudinal Classification	Short
Lumens Per Lamp	N.A. (absolute)
Total Lamp Lumens	N.A. (absolute)
Luminaire Lumens	2054
Downward Total Efficiency	N.A.
Total Luminaire Efficiency	N.A.
Luminaire Efficacy Rating (LER)	121
Total Luminaire Watts	17
Ballast Factor	1.00
Upward Waste Light Ratio	0.00
Max. Cd.	995.331 (300H, 50V)
Max. Cd. (<90 Vert.)	995.331 (300H, 50V)
Max. Cd. (At 90 Deg. Vert.)	.292 (0.0%Lum)
Max. Cd. (80 to <90 Deg. Vert.)	178.145 (8.7%Lum)
Cutoff Classification (deprecated)	N.A. (absolute)

## Lum. Classification System (LCS)

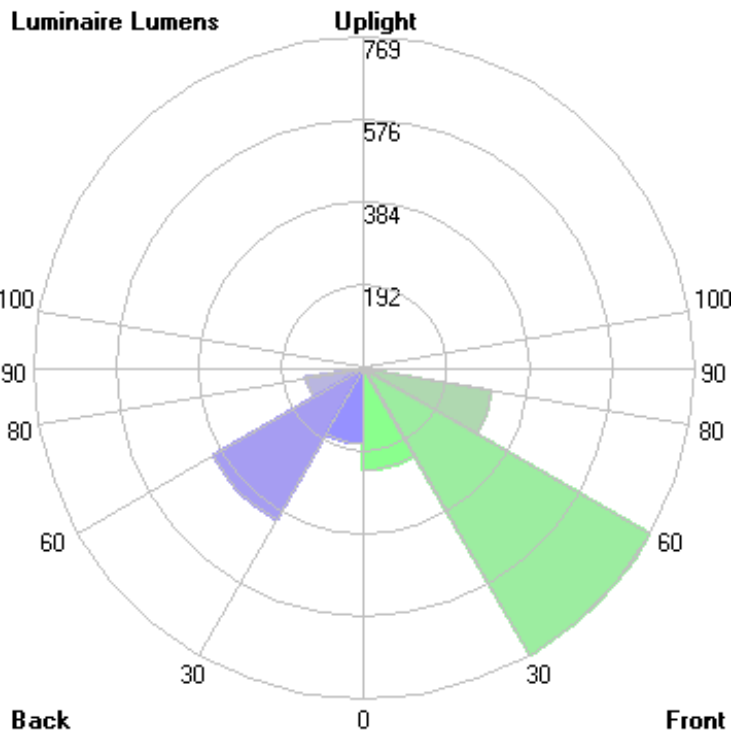
LCS Zone	Lumens	%Lamp	%Lum
FL (0-30)	235.4	N.A.	11.5
FM (30-60)	768.6	N.A.	37.4
FH (60-80)	302.3	N.A.	14.7
FVH (80-90)	19.9	N.A.	1.0
BL (0-30)	176.3	N.A.	8.6
BM (30-60)	407.2	N.A.	19.8
BH (60-80)	135.6	N.A.	6.6
BVH (80-90)	9.0	N.A.	0.4
UL (90-100)	< 0.05	N.A.	0.0
UH (100-180)	0.0	N.A.	0.0
<b>Total</b>	<b>2054.3</b>	<b>N.A.</b>	<b>100.0</b>

**BUG Rating B1-U0\*-G1**

\*Fixture has measured rating of U1 due to testing above 90 degrees and stray light from reflection off of the fixture body. Upon visual inspection of luminaire, it has a flat lens and opaque sides, there is no significant uplight (<0.5%), and it has therefore been assigned a value of U0. Consult factory for more information.



Grid Spacing: 5 ft.



In the interest of product improvement, BEGA reserves the right to make technical changes without notice.

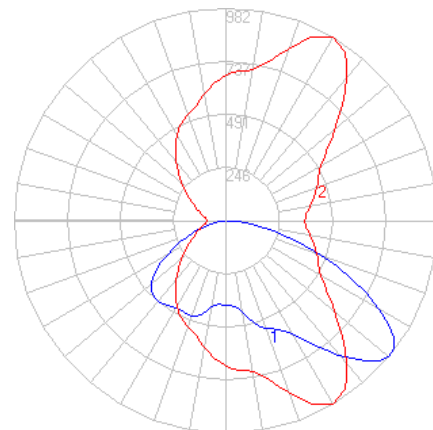
BEGA 1000 Bega Way, Carpinteria, CA 93013 (805)684-0533 Fax (805)566-9474 www.bega-us.com © Copyright BEGA-US 2022

9/20/2022

# BEGA

File: 84245K27\_BEGA\_IES.ies

TEST: BE\_84245K4  
 TEST LAB: BEGA  
 DATE: 04/25/2019  
 LUMINAIRE: 84 245K27  
 LAMP: 13.6W LED



## Characteristics

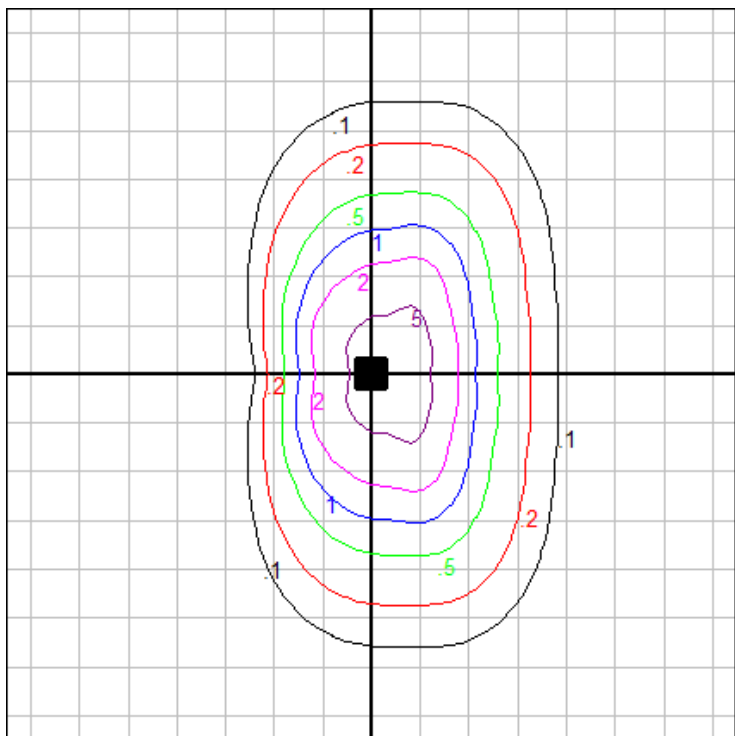
IES Classification	Type II
Longitudinal Classification	Short
Lumens Per Lamp	N.A. (absolute)
Total Lamp Lumens	N.A. (absolute)
Luminaire Lumens	2027
Downward Total Efficiency	N.A.
Total Luminaire Efficiency	N.A.
Luminaire Efficacy Rating (LER)	119
Total Luminaire Watts	17
Ballast Factor	1.00
Upward Waste Light Ratio	0.00
Max. Cd.	982.046 (300H, 50V)
Max. Cd. (<90 Vert.)	982.046 (300H, 50V)
Max. Cd. (At 90 Deg. Vert.)	.288 (0.0%Lum)
Max. Cd. (80 to <90 Deg. Vert.)	175.767 (8.7%Lum)
Cutoff Classification (deprecated)	N.A. (absolute)

## Lum. Classification System (LCS)

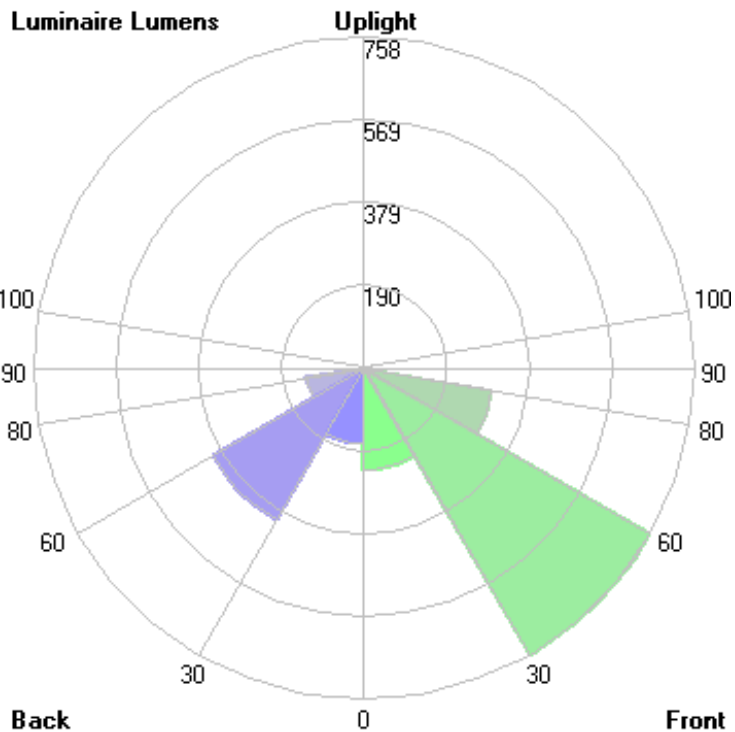
LCS Zone	Lumens	%Lamp	%Lum
FL (0-30)	232.3	N.A.	11.5
FM (30-60)	758.3	N.A.	37.4
FH (60-80)	298.2	N.A.	14.7
FVH (80-90)	19.7	N.A.	1.0
BL (0-30)	174.0	N.A.	8.6
BM (30-60)	401.7	N.A.	19.8
BH (60-80)	133.8	N.A.	6.6
BVH (80-90)	8.9	N.A.	0.4
UL (90-100)	< 0.05	N.A.	0.0
UH (100-180)	0.0	N.A.	0.0
<b>Total</b>	<b>2026.9</b>	<b>N.A.</b>	<b>100.0</b>

**BUG Rating B1-U0\*-G1**

\*Fixture has measured rating of U1 due to testing above 90 degrees and stray light from reflection off of the fixture body. Upon visual inspection of luminaire, it has a flat lens and opaque sides, there is no significant uplight (<0.5%), and it has therefore been assigned a value of U0. Consult factory for more information.



Grid Spacing: 5 ft.



In the interest of product improvement, BEGA reserves the right to make technical changes without notice.