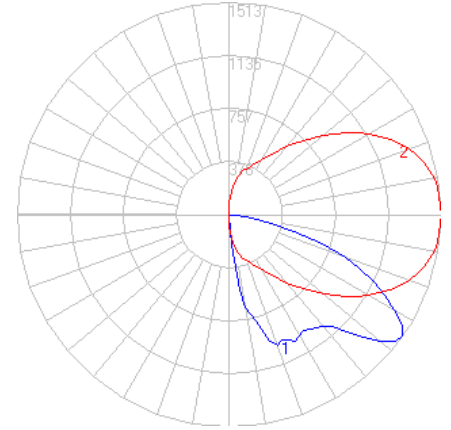


BEGA

File: 84238K4_BEGA_IES.ies

TEST: BE_84238K4
 TEST LAB: BEGA
 DATE: 2/27/2019
 LUMINAIRE: 84 238K4
 LAMP: 11.5W LED



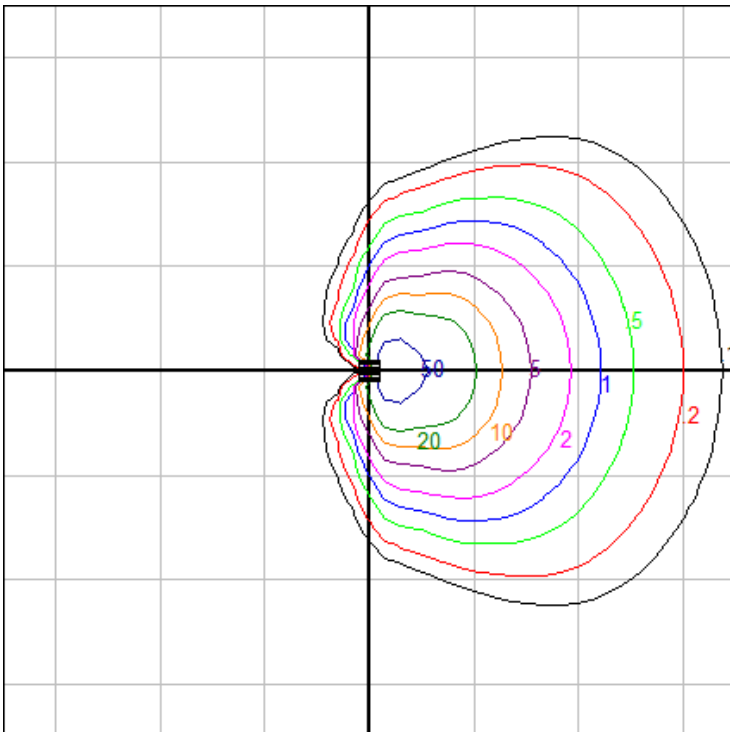
Characteristics

IES Classification	Type IV
Longitudinal Classification	Very Short
Lumens Per Lamp	N.A. (absolute)
Total Lamp Lumens	N.A. (absolute)
Luminaire Lumens	1650
Downward Total Efficiency	N.A.
Total Luminaire Efficiency	N.A.
Luminaire Efficacy Rating (LER)	110
Total Luminaire Watts	15
Ballast Factor	1.00
Upward Waste Light Ratio	0.00
Max. Cd.	1513 (360H, 55V)
Max. Cd. (<90 Vert.)	1513 (360H, 55V)
Max. Cd. (At 90 Deg. Vert.)	0 (0.0%Lum)
Max. Cd. (80 to <90 Deg. Vert.)	163.1 (9.9%Lum)
Cutoff Classification (deprecated)	N.A. (absolute)

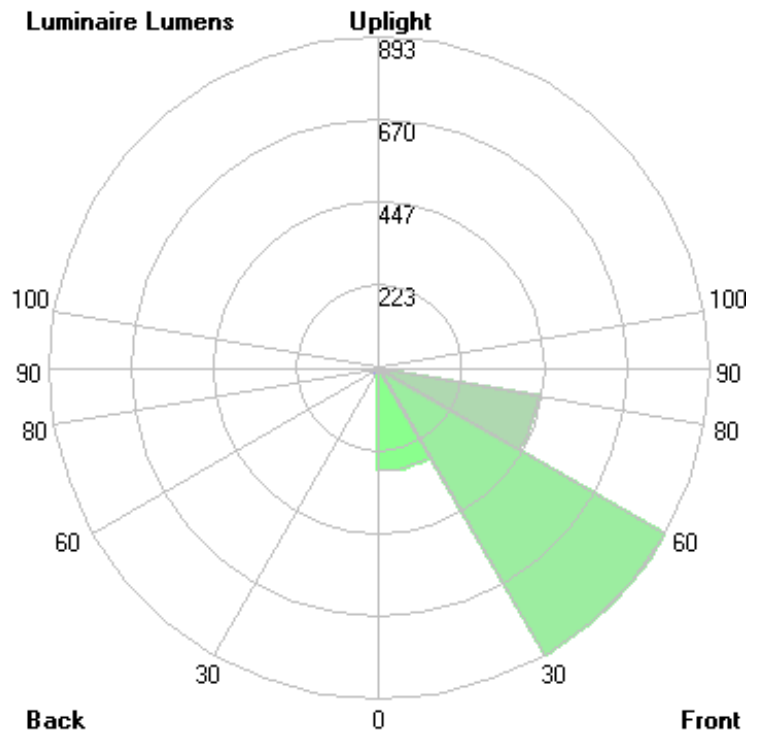
Lum. Classification System (LCS)

LCS Zone	Lumens	%Lamp	%Lum
FL (0-30)	277.5	N.A.	16.8
FM (30-60)	893.4	N.A.	54.2
FH (60-80)	438.2	N.A.	26.6
FVH (80-90)	10.1	N.A.	0.6
BL (0-30)	13.0	N.A.	0.8
BM (30-60)	15.0	N.A.	0.9
BH (60-80)	2.5	N.A.	0.1
BVH (80-90)	0.1	N.A.	0.0
UL (90-100)	0.0	N.A.	0.0
UH (100-180)	0.0	N.A.	0.0
Total	1649.8	N.A.	100.0

BUG Rating B0-U0-G1



Grid Spacing: 5 ft.

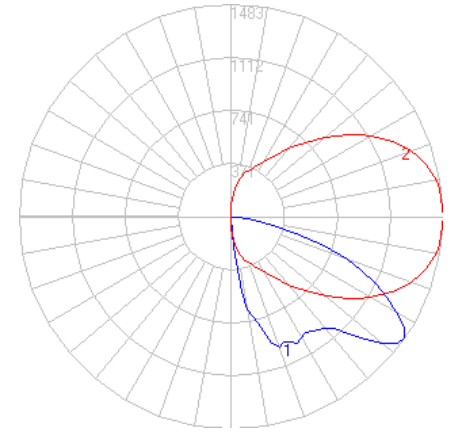


In the interest of product improvement, BEGA reserves the right to make technical changes without notice.

BEGA

File: 84238K35_BEGA_IES.ies

TEST: BE_84238K4
 TEST LAB: BEGA
 DATE: 2/27/2019
 LUMINAIRE: 84 238K35
 LAMP: 11.5W LED



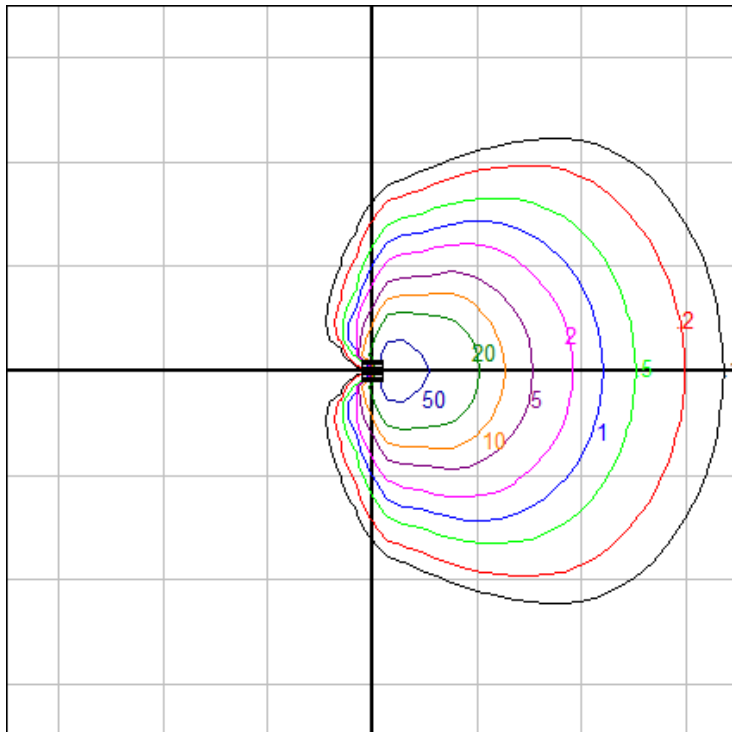
Characteristics

IES Classification	Type IV
Longitudinal Classification	Very Short
Lumens Per Lamp	N.A. (absolute)
Total Lamp Lumens	N.A. (absolute)
Luminaire Lumens	1617
Downward Total Efficiency	N.A.
Total Luminaire Efficiency	N.A.
Luminaire Efficacy Rating (LER)	108
Total Luminaire Watts	15
Ballast Factor	1.00
Upward Waste Light Ratio	0.00
Max. Cd.	1482.74 (360H, 55V)
Max. Cd. (<90 Vert.)	1482.74 (360H, 55V)
Max. Cd. (At 90 Deg. Vert.)	0 (0.0%Lum)
Max. Cd. (80 to <90 Deg. Vert.)	159.838 (9.9%Lum)
Cutoff Classification (deprecated)	N.A. (absolute)

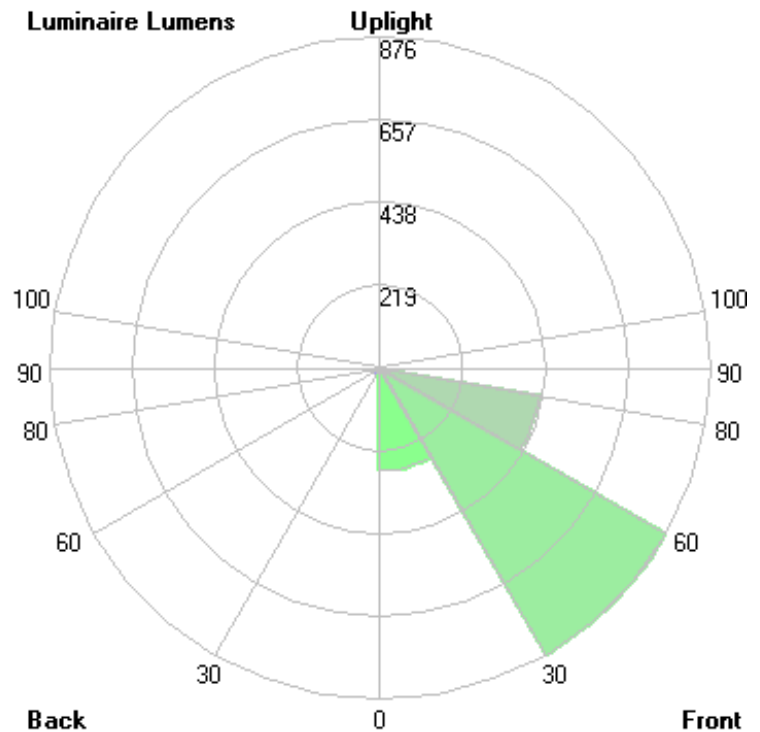
Lum. Classification System (LCS)

LCS Zone	Lumens	%Lamp	%Lum
FL (0-30)	272.0	N.A.	16.8
FM (30-60)	875.5	N.A.	54.2
FH (60-80)	429.4	N.A.	26.6
FVH (80-90)	9.9	N.A.	0.6
BL (0-30)	12.7	N.A.	0.8
BM (30-60)	14.7	N.A.	0.9
BH (60-80)	2.4	N.A.	0.1
BVH (80-90)	0.1	N.A.	0.0
UL (90-100)	0.0	N.A.	0.0
UH (100-180)	0.0	N.A.	0.0
Total	1616.7	N.A.	100.0

BUG Rating B0-U0-G1



Grid Spacing: 5 ft.

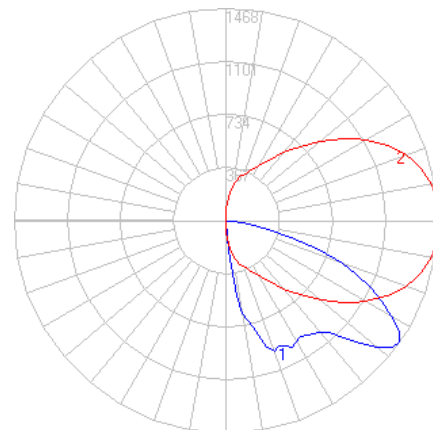


In the interest of product improvement, BEGA reserves the right to make technical changes without notice.

BEGA

File: 84238K3_BEGA_IES.ies

TEST: BE_84238K4
 TEST LAB: BEGA
 DATE: 2/27/2019
 LUMINAIRE: 84 238K3
 LAMP: 11.5W LED



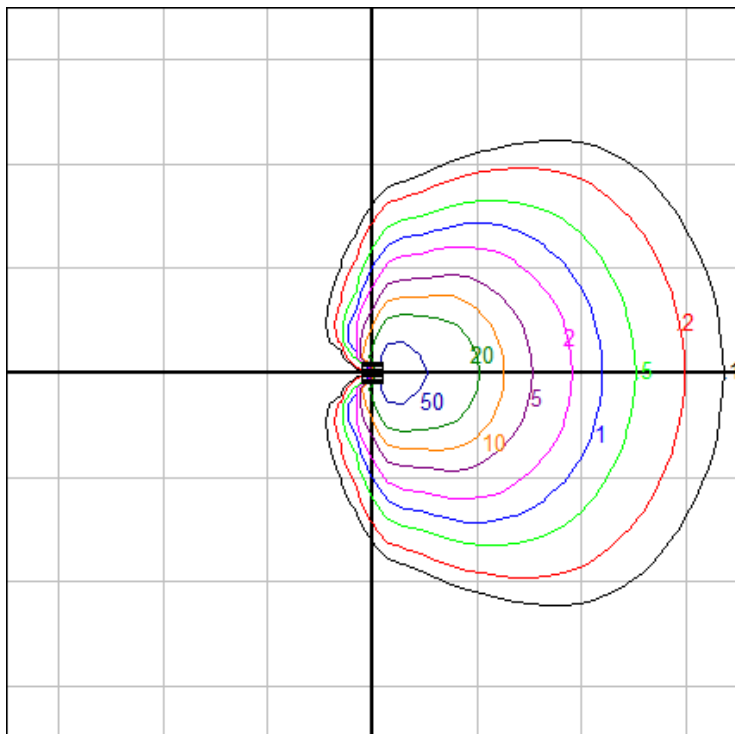
Characteristics

IES Classification	Type IV
Longitudinal Classification	Very Short
Lumens Per Lamp	N.A. (absolute)
Total Lamp Lumens	N.A. (absolute)
Luminaire Lumens	1600
Downward Total Efficiency	N.A.
Total Luminaire Efficiency	N.A.
Luminaire Efficacy Rating (LER)	107
Total Luminaire Watts	15
Ballast Factor	1.00
Upward Waste Light Ratio	0.00
Max. Cd.	1467.61 (360H, 55V)
Max. Cd. (<90 Vert.)	1467.61 (360H, 55V)
Max. Cd. (At 90 Deg. Vert.)	0 (0.0%Lum)
Max. Cd. (80 to <90 Deg. Vert.)	158.207 (9.9%Lum)
Cutoff Classification (deprecated)	N.A. (absolute)

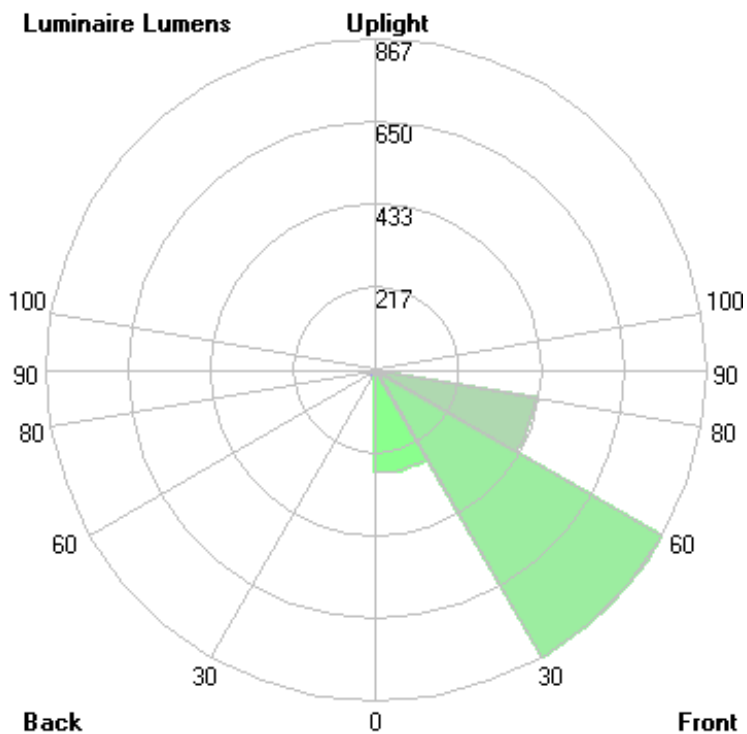
Lum. Classification System (LCS)

LCS Zone	Lumens	%Lamp	%Lum
FL (0-30)	269.2	N.A.	16.8
FM (30-60)	866.6	N.A.	54.2
FH (60-80)	425.0	N.A.	26.6
FVH (80-90)	9.8	N.A.	0.6
BL (0-30)	12.6	N.A.	0.8
BM (30-60)	14.5	N.A.	0.9
BH (60-80)	2.4	N.A.	0.1
BVH (80-90)	0.1	N.A.	0.0
UL (90-100)	0.0	N.A.	0.0
UH (100-180)	0.0	N.A.	0.0
Total	1600.2	N.A.	100.0

BUG Rating B0-U0-G1



Grid Spacing: 5 ft.

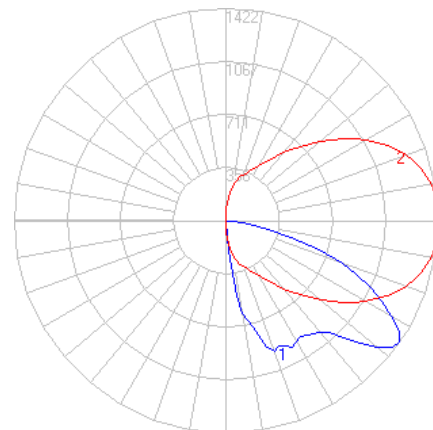


In the interest of product improvement, BEGA reserves the right to make technical changes without notice.

BEGA

File: 84238K27_BEGA_IES.ies

TEST: BE_84238K4
 TEST LAB: BEGA
 DATE: 2/27/2019
 LUMINAIRE: 84 238K27
 LAMP: 11.5W LED



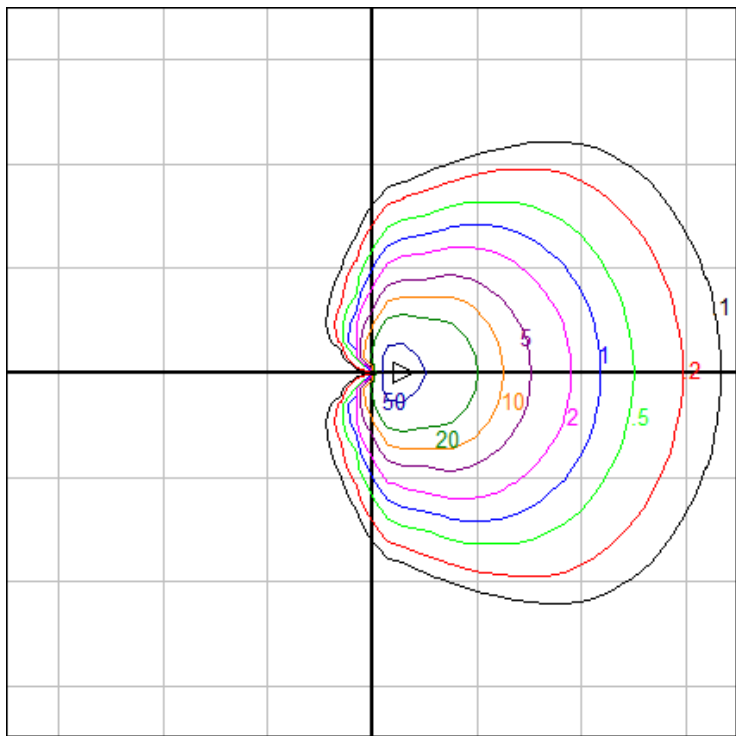
Characteristics

IES Classification	Type IV
Longitudinal Classification	Very Short
Lumens Per Lamp	N.A. (absolute)
Total Lamp Lumens	N.A. (absolute)
Luminaire Lumens	1551
Downward Total Efficiency	N.A.
Total Luminaire Efficiency	N.A.
Luminaire Efficacy Rating (LER)	103
Total Luminaire Watts	15
Ballast Factor	1.00
Upward Waste Light Ratio	0.00
Max. Cd.	1422.22 (360H, 55V)
Max. Cd. (<90 Vert.)	1422.22 (360H, 55V)
Max. Cd. (At 90 Deg. Vert.)	0 (0.0%Lum)
Max. Cd. (80 to <90 Deg. Vert.)	153.314 (9.9%Lum)
Cutoff Classification (deprecated)	N.A. (absolute)

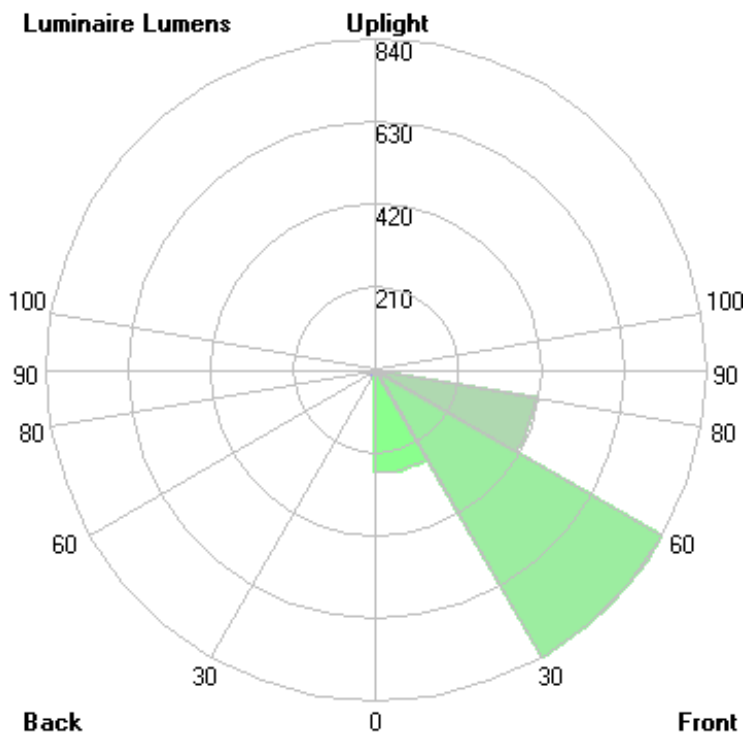
Lum. Classification System (LCS)

LCS Zone	Lumens	%Lamp	%Lum
FL (0-30)	260.9	N.A.	16.8
FM (30-60)	839.8	N.A.	54.2
FH (60-80)	411.9	N.A.	26.6
FVH (80-90)	9.5	N.A.	0.6
BL (0-30)	12.2	N.A.	0.8
BM (30-60)	14.1	N.A.	0.9
BH (60-80)	2.3	N.A.	0.1
BVH (80-90)	0.1	N.A.	0.0
UL (90-100)	0.0	N.A.	0.0
UH (100-180)	0.0	N.A.	0.0
Total	1550.8	N.A.	100.0

BUG Rating B0-U0-G1



Grid Spacing: 5 ft.

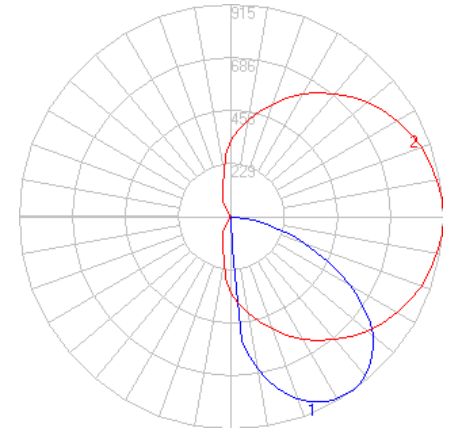


In the interest of product improvement, BEGA reserves the right to make technical changes without notice.

BEGA

File: 84238K4_FRO_BEGA_IES.ies

TEST: L082311101
 TEST LAB: LIGHT LAB
 DATE: 11/21/2023
 LUMINAIRE: 84 238K4 FROSTED LENS
 LAMP: 11.5W LED



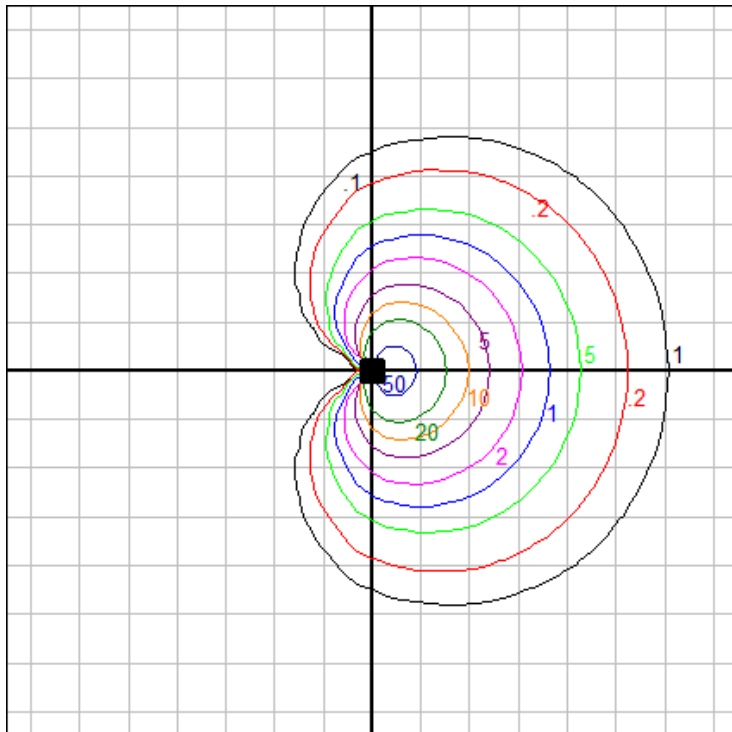
Characteristics

IES Classification	Type III
Longitudinal Classification	Very Short
Lumens Per Lamp	N.A. (absolute)
Total Lamp Lumens	N.A. (absolute)
Luminaire Lumens	1284
Downward Total Efficiency	N.A.
Total Luminaire Efficiency	N.A.
Luminaire Efficacy Rating (LER)	91
Total Luminaire Watts	14.18
Ballast Factor	1.00
Upward Waste Light Ratio	0.00
Max. Cd.	915 (0H, 32.5V)
Max. Cd. (<90 Vert.)	915 (0H, 32.5V)
Max. Cd. (At 90 Deg. Vert.)	0 (0.0%Lum)
Max. Cd. (80 to <90 Deg. Vert.)	98 (7.6%Lum)
Cutoff Classification (deprecated)	N.A. (absolute)

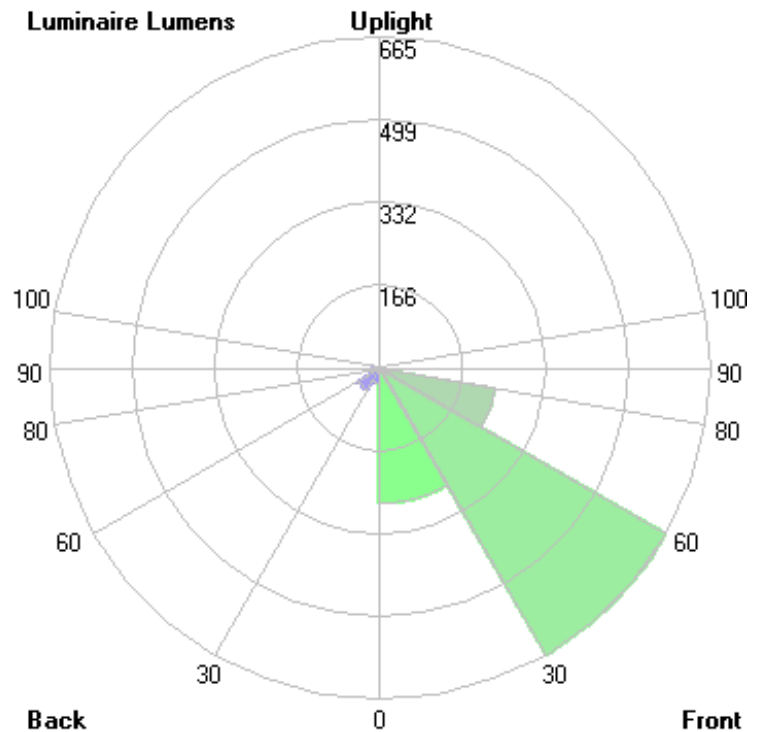
Lum. Classification System (LCS)

LCS Zone	Lumens	%Lamp	%Lum
FL (0-30)	270.1	N.A.	21.0
FM (30-60)	664.7	N.A.	51.8
FH (60-80)	234.8	N.A.	18.3
FVH (80-90)	12.4	N.A.	1.0
BL (0-30)	30.5	N.A.	2.4
BM (30-60)	51.5	N.A.	4.0
BH (60-80)	18.0	N.A.	1.4
BVH (80-90)	2.0	N.A.	0.2
UL (90-100)	0.0	N.A.	0.0
UH (100-180)	0.0	N.A.	0.0
Total	1284.0	N.A.	100.0

BUG Rating B0-U0-G1



Grid Spacing: 2.5 ft.



In the interest of product improvement, BEGA reserves the right to make technical changes without notice.

BEGA 1000 Bega Way, Carpinteria, CA 93013 (805)684-0533 Fax (805)566-9474 www.bega-us.com © Copyright BEGA-US 2023

11/28/2023