

Application

An in-grade luminaire for installation in pre-cored holes and intended to provide a uniform wall wash. Designed to bear pressure loads up to 4,400 lbs. from vehicles with pneumatic tires. The luminaire must not be used for traffic lanes where it is subject to horizontal pressure from vehicles braking, accelerating or changing direction

Materials

- Clear safety glass
- Corrosion-resistant 304 grade stainless steel
- High temperature silicone gasket
- Mechanically captive stainless steel fasteners
- Stainless steel screw clamps
- Fully potted waterstopper cable
- Pure anodized aluminum reflector surface

NRTL listed to North American Standards, suitable for wet locations
Protection class IP 68

Weight: 8.8 lbs.

Electrical

Operating voltage	120-277V AC
Minimum start temperature	-30° C
LED module wattage	13.7 W
System wattage	17.0 W
Controllability	0-10V, TRIAC, and ELV dimmable
Color rendering index	Ra > 80
Luminaire lumens	1488 lm
LED service life (L70)	60000 hrs

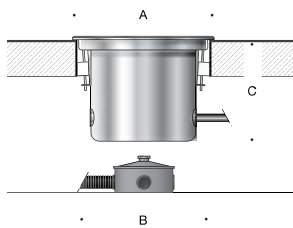
LED color temperature

- 4000K (K4)
- 3500K (K35)
- 3000K (K3)
- 2700K (K27)

BEGA can supply you with suitable LED replacement modules for up to 20 years after the purchase of LED luminaires - see website for details

Finish

#4 brushed stainless steel. Custom colors are not available.



In-grade luminaire · Wall washer

	LED	□	A	B	C
B84230	13.7 W	54°x41°	9 ⁵ / ₈	8 ⁷ / ₈	7 ¹ / ₄

Type:
BEGA Product:
Project:
Modified:

