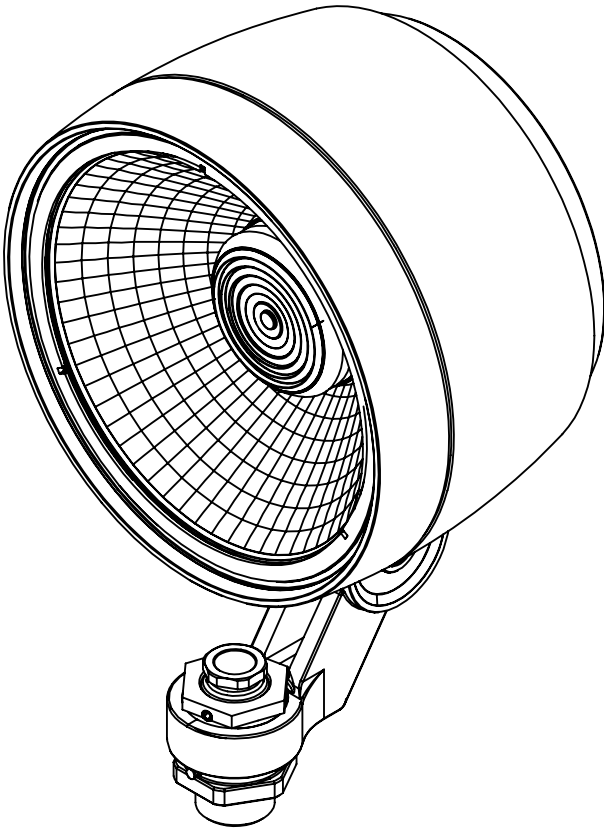
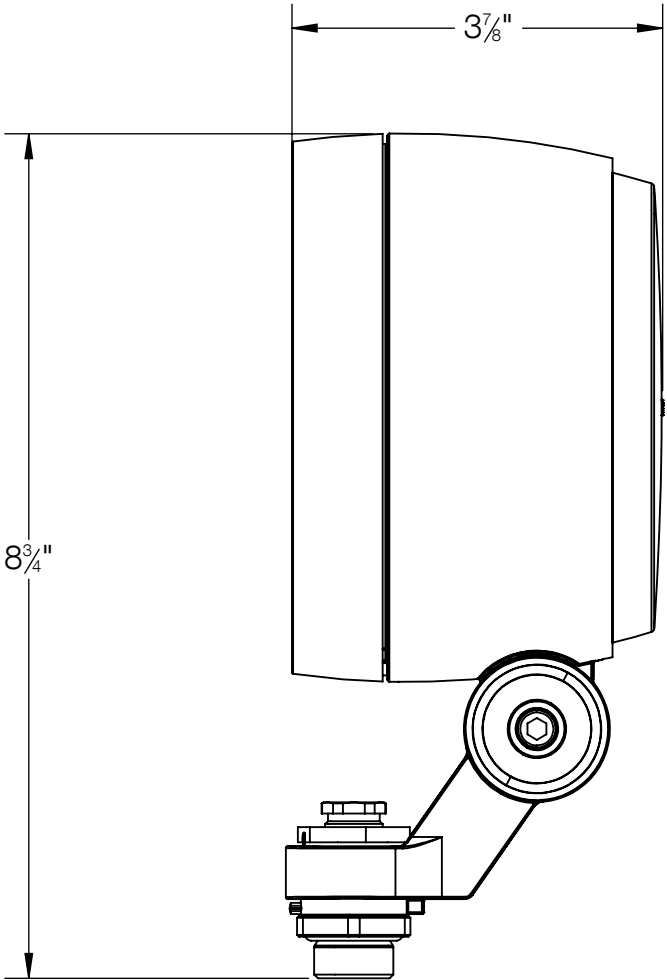
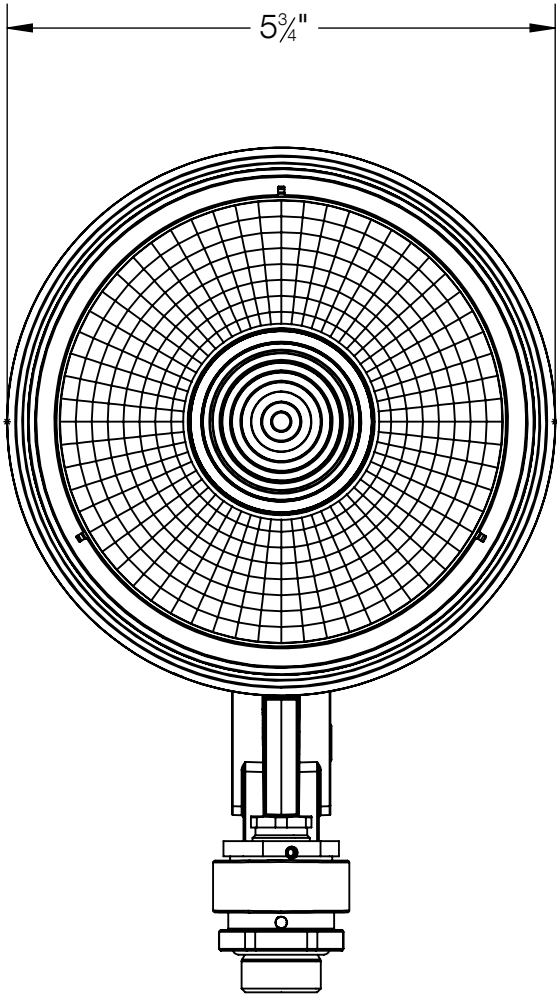


REV	CHANGED BY	DESCRIPTION	DATE



**BEGA**

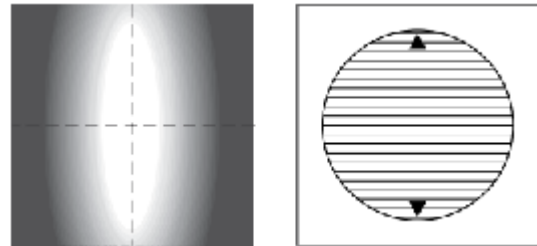
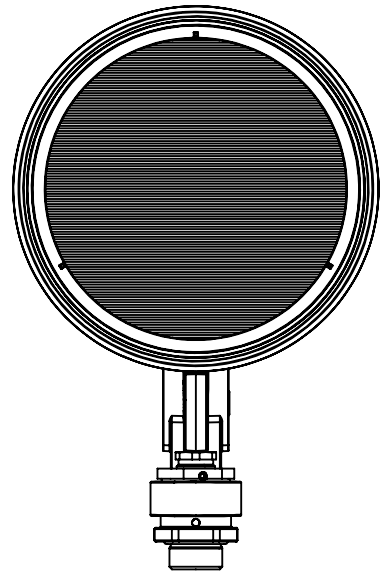
1000 BEGA Way, Carpinteria, California 93013 P (805) 684-0533 - www.bega-us.com

APPROVED: \_\_\_\_\_ DATE: \_\_\_\_\_  
TYPE: \_\_\_\_\_

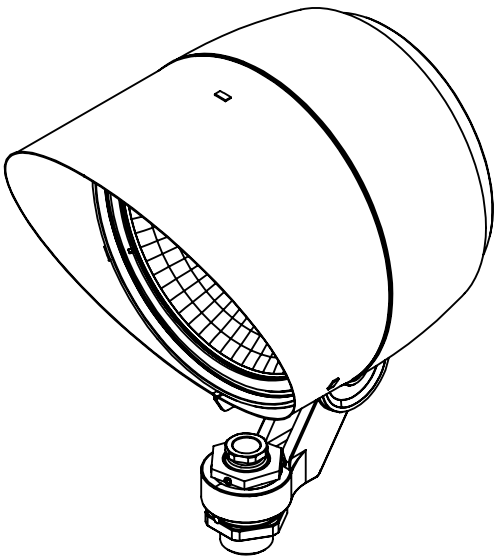
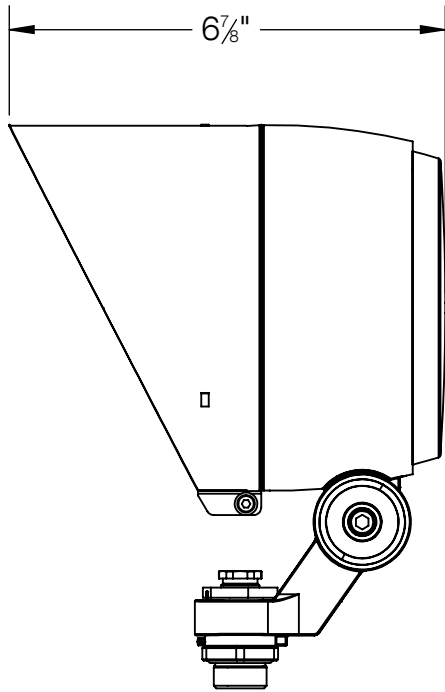
DESCRIPTION: PERFORMANCE FLOODLIGHT  
WIDE BEAM

PROPRIETARY AND CONFIDENTIAL  
THE INFORMATION CONTAINED IN THIS DRAWING IS THE SOLE PROPERTY  
OF BEGA NORTH AMERICA, INC.  
ANY REPRODUCTION IN PART OR AS A WHOLE WITHOUT THE WRITTEN  
PERMISSION OF BEGA NORTH AMERICA, INC. IS PROHIBITED.

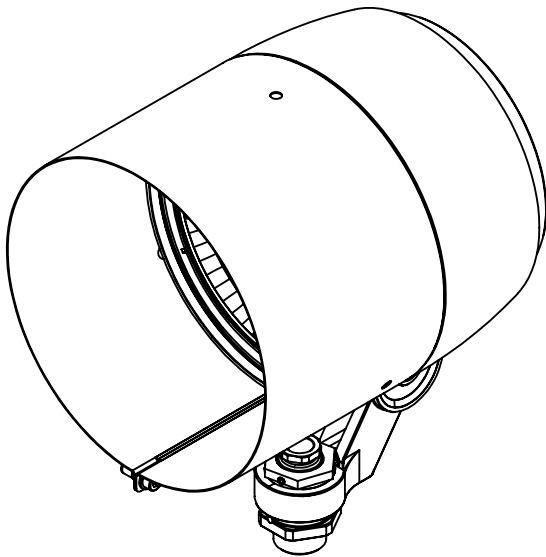
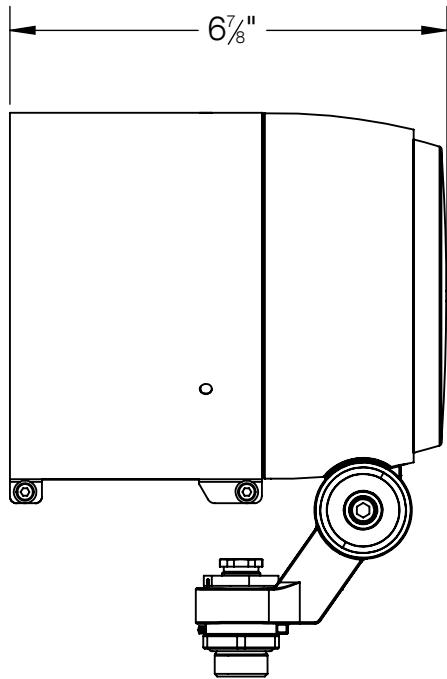
SIZE	PART NO.	REV
B	84217	-
NOT TO SCALE	7/11/2022	SHEET 1 OF 2



84217 SHOWN WITH ELLIPTICAL SPREAD LENS ACCESSORY 71120  
LENS IS ROTATABLE 360°



84217 SHOWN WITH 180° GLARE SHIELD ACCESSORY 71118  
GLARE SHIELD IS ROTATABLE 360°



84217 SHOWN WITH 360° GLARE SHIELD ACCESSORY 79829  
GLARE SHIELD IS ROTATABLE 360°

BEGA				
1000 BEGA Way, Carpinteria, California 93013			P (805) 684-0533 - www.bega-us.com	
APPROVED: _____ DATE: _____		DESCRIPTION: PERFORMANCE FLOODLIGHT WIDE BEAM		
TYPE: _____				
PROPRIETARY AND CONFIDENTIAL  THE INFORMATION CONTAINED IN THIS DRAWING IS THE SOLE PROPERTY OF BEGA NORTH AMERICA, INC.  ANY REPRODUCTION IN PART OR AS A WHOLE WITHOUT THE WRITTEN PERMISSION OF BEGA NORTH AMERICA, INC. IS PROHIBITED.		SIZE	PART NO.	REV
		B	84217	-
		NOT TO SCALE		7/11/2022