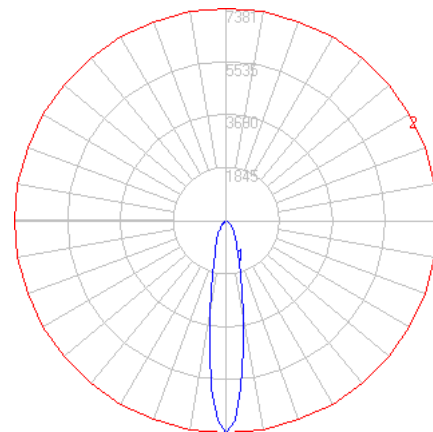


BEGA

File: 84209K4_BEGA_IES.ies

TEST: BE_84209K4
 TEST LAB: BEGA
 DATE: 05/07/2019
 LUMINAIRE: 84 209K4
 LAMP: 16.8W LED

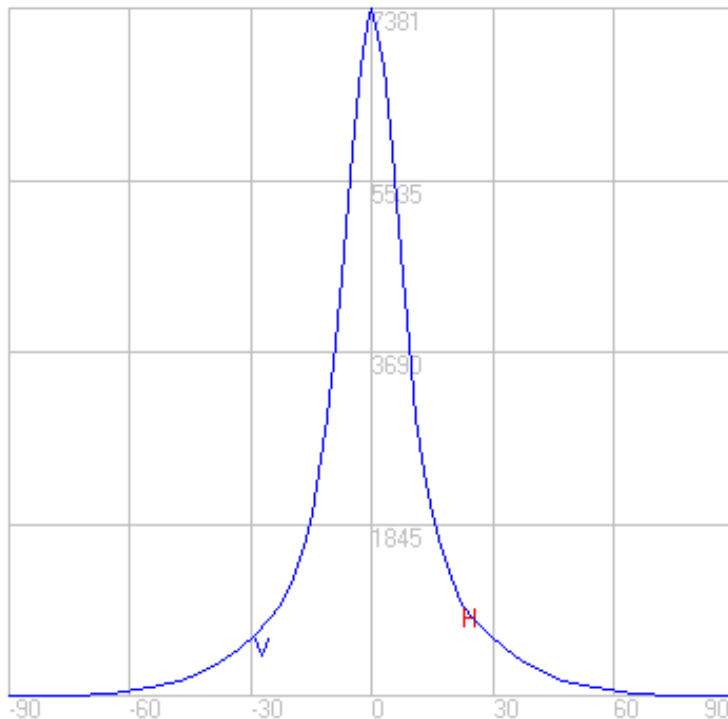
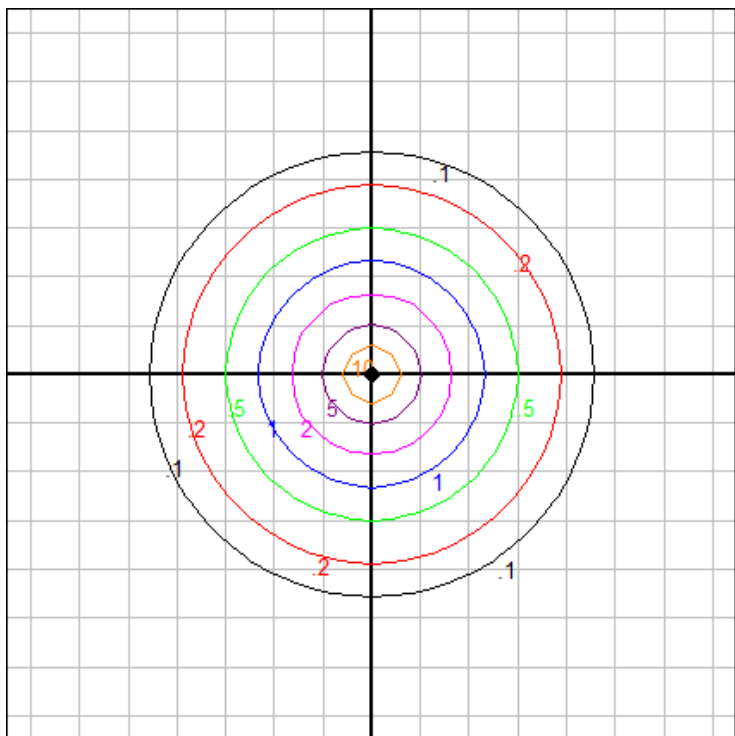


Characteristics

NEMA Type	4 H x 4 V
Maximum Candela	7380.6
Maximum Candela Angle	0 H 0 V
Horizontal Beam Angle (50%)	18.5
Vertical Beam Angle (50%)	18.5
Horizontal Field Angle (10%)	54.0
Vertical Field Angle (10%)	54.0
Lumens Per Lamp	N.A. (absolute)
Total Lamp Lumens	N.A. (absolute)
Beam Lumens	428
Beam Efficiency	N.A.
Field Lumens	1290
Field Efficiency	N.A.
Spill Lumens	659
Luminaire Lumens	1949
Total Efficiency	N.A.
Total Luminaire Watts	20
Ballast Factor	1.00

Zonal Lumen Summary

Zone	Lumens
0-10	474.87
10-20	554.04
20-30	388.56
30-40	276.46
40-50	154.08
50-60	71.32
60-70	22.20
70-80	5.77
80-90	0.39
90-100	0.00
100-110	0.00
110-120	0.00
120-130	0.00
130-140	0.00
140-150	0.00
150-160	0.00
160-170	0.00
170-180	0.00



Mounting Height: 20 ft.

Grid Spacing: 5 ft.

In the interest of product improvement, BEGA reserves the right to make technical changes without notice.

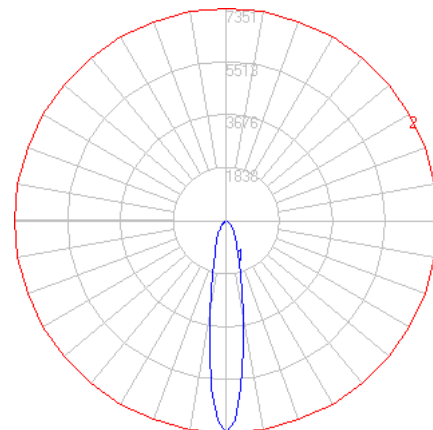
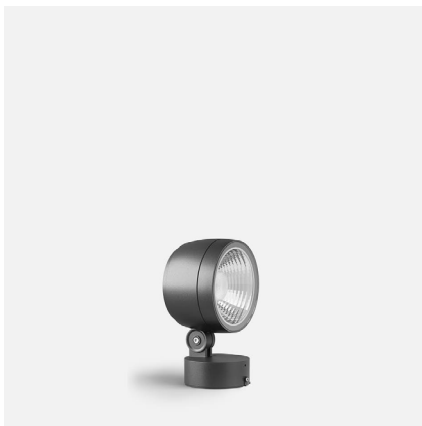
BEGA 1000 Bega Way, Carpinteria, CA 93013 (805)684-0533 Fax (805)566-9474 www.bega-us.com © Copyright BEGA-US 2022

5/26/2022

BEGA

File: 84209K35_BEGA_IES.ies

TEST: BE_84209K4
 TEST LAB: BEGA
 DATE: 05/07/2019
 LUMINAIRE: 84 209K35
 LAMP: 16.8W LED

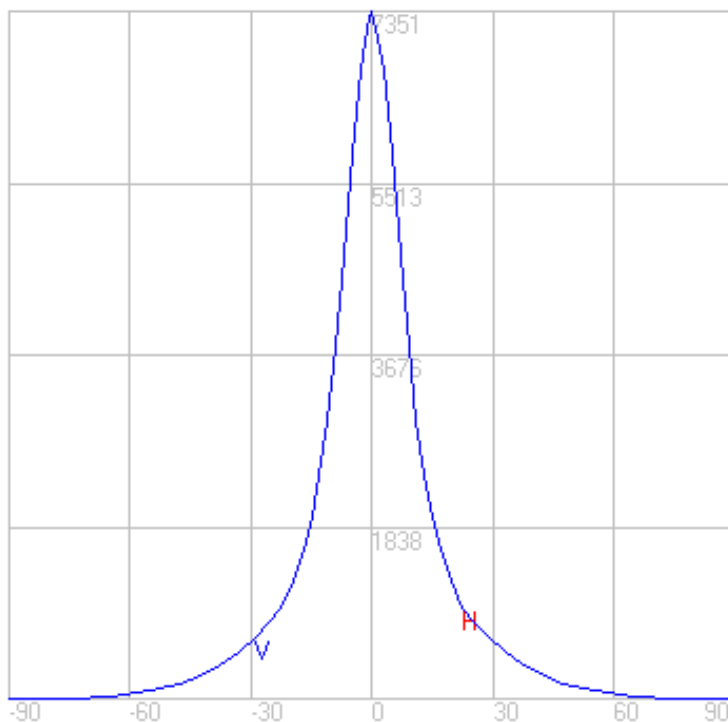
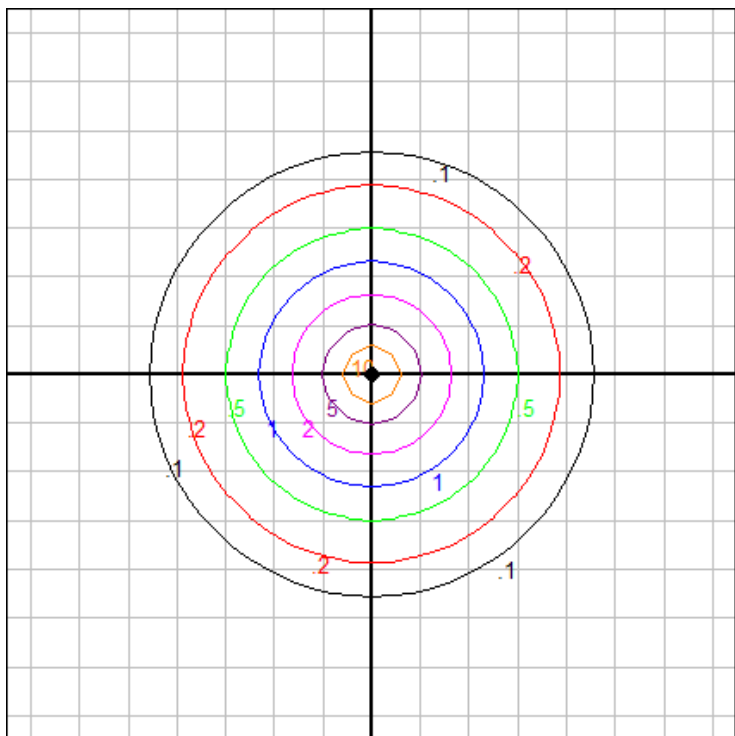


Characteristics

NEMA Type	4 H x 4 V
Maximum Candela	7351.078
Maximum Candela Angle	0 H 0 V
Horizontal Beam Angle (50%)	18.5
Vertical Beam Angle (50%)	18.5
Horizontal Field Angle (10%)	54.0
Vertical Field Angle (10%)	54.0
Lumens Per Lamp	N.A. (absolute)
Total Lamp Lumens	N.A. (absolute)
Beam Lumens	426
Beam Efficiency	N.A.
Field Lumens	1285
Field Efficiency	N.A.
Spill Lumens	656
Luminaire Lumens	1941
Total Efficiency	N.A.
Total Luminaire Watts	20
Ballast Factor	1.00

Zonal Lumen Summary

Zone	Lumens
0-10	472.97
10-20	551.82
20-30	387.00
30-40	275.36
40-50	153.47
50-60	71.03
60-70	22.11
70-80	5.74
80-90	0.39
90-100	0.00
100-110	0.00
110-120	0.00
120-130	0.00
130-140	0.00
140-150	0.00
150-160	0.00
160-170	0.00
170-180	0.00



Mounting Height: 20 ft.

Grid Spacing: 5 ft.

In the interest of product improvement, BEGA reserves the right to make technical changes without notice.

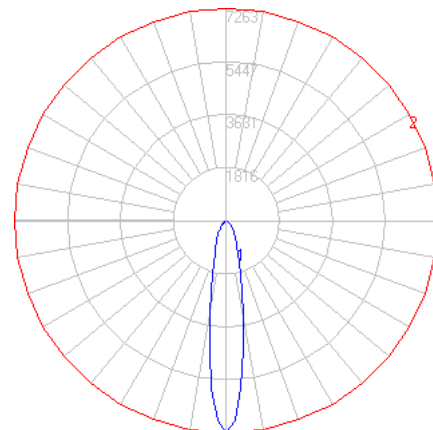
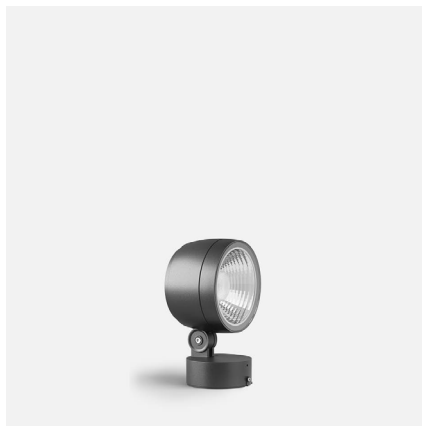
BEGA 1000 Bega Way, Carpinteria, CA 93013 (805)684-0533 Fax (805)566-9474 www.bega-us.com © Copyright BEGA-US 2022

5/26/2022

BEGA

File: 84209K3_BEGA_IES.ies

TEST: BE_84209K4
 TEST LAB: BEGA
 DATE: 05/07/2019
 LUMINAIRE: 84 209K3
 LAMP: 16.8W LED

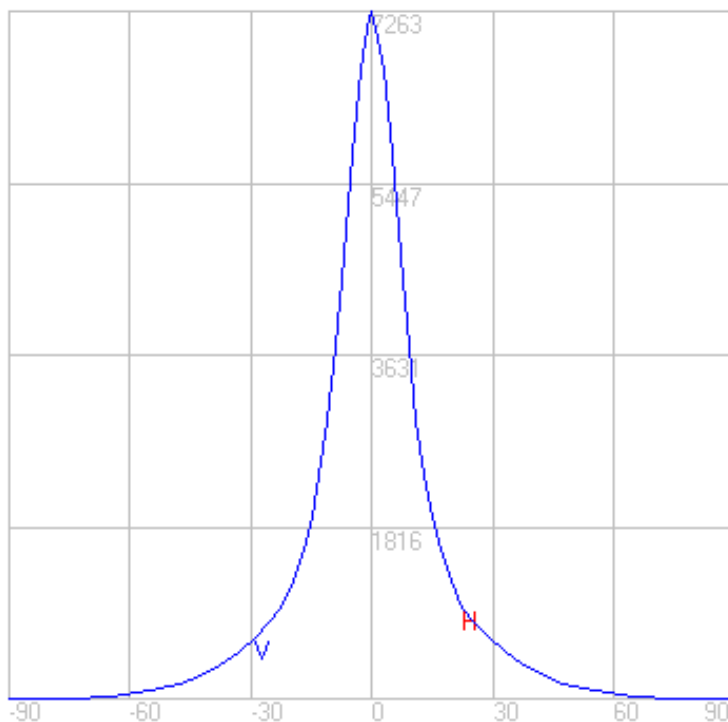
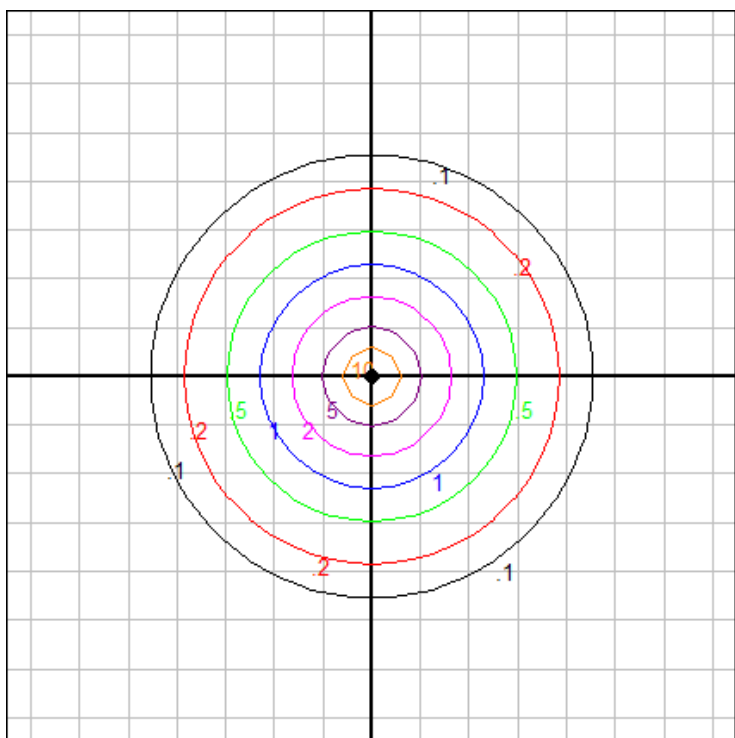


Characteristics

NEMA Type	4 H x 4 V
Maximum Candela	7262.511
Maximum Candela Angle	0 H 0 V
Horizontal Beam Angle (50%)	18.5
Vertical Beam Angle (50%)	18.5
Horizontal Field Angle (10%)	54.0
Vertical Field Angle (10%)	54.0
Lumens Per Lamp	N.A. (absolute)
Total Lamp Lumens	N.A. (absolute)
Beam Lumens	421
Beam Efficiency	N.A.
Field Lumens	1270
Field Efficiency	N.A.
Spill Lumens	648
Luminaire Lumens	1918
Total Efficiency	N.A.
Total Luminaire Watts	20
Ballast Factor	1.00

Zonal Lumen Summary

Zone	Lumens
0-10	467.27
10-20	545.17
20-30	382.34
30-40	272.04
40-50	151.62
50-60	70.18
60-70	21.85
70-80	5.68
80-90	0.39
90-100	0.00
100-110	0.00
110-120	0.00
120-130	0.00
130-140	0.00
140-150	0.00
150-160	0.00
160-170	0.00
170-180	0.00



Mounting Height: 20 ft.

Grid Spacing: 5 ft.

In the interest of product improvement, BEGA reserves the right to make technical changes without notice.

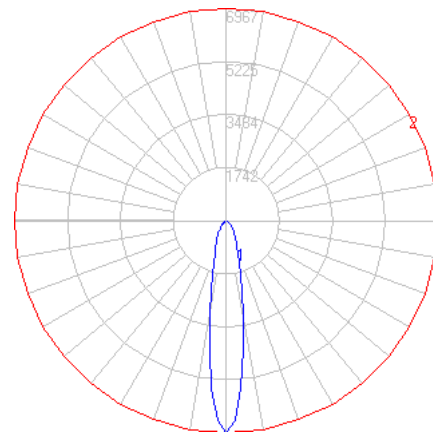
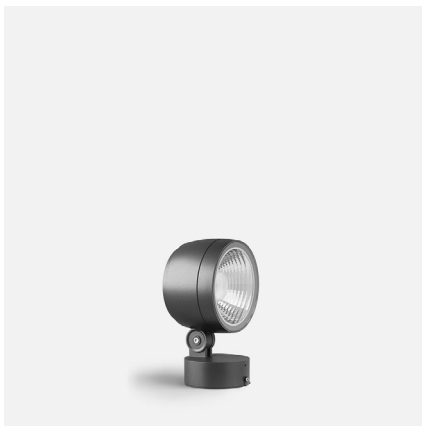
BEGA 1000 Bega Way, Carpinteria, CA 93013 (805)684-0533 Fax (805)566-9474 www.bega-us.com © Copyright BEGA-US 2022

5/26/2022

BEGA

File: 84209K27_BEGA_IES.ies

TEST: BE_84209K4
 TEST LAB: BEGA
 DATE: 05/07/2019
 LUMINAIRE: 84 209K27
 LAMP: 16.8W LED

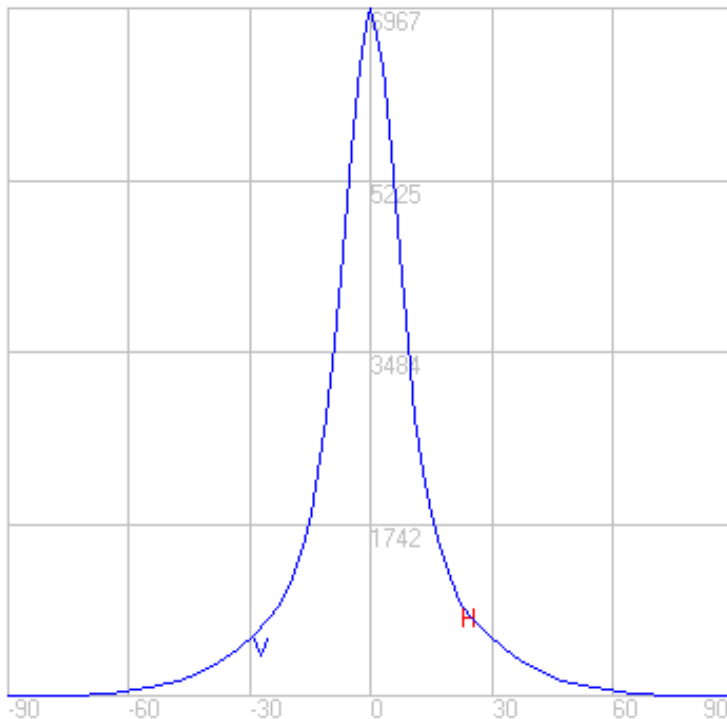
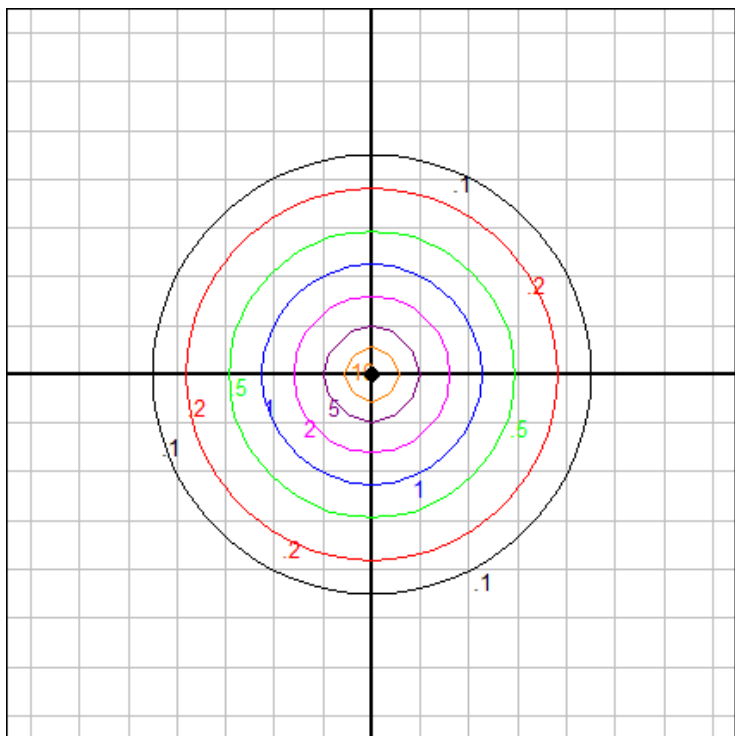


Characteristics

NEMA Type	4 H x 4 V
Maximum Candela	6967.286
Maximum Candela Angle	0 H 0 V
Horizontal Beam Angle (50%)	18.5
Vertical Beam Angle (50%)	18.5
Horizontal Field Angle (10%)	54.0
Vertical Field Angle (10%)	54.0
Lumens Per Lamp	N.A. (absolute)
Total Lamp Lumens	N.A. (absolute)
Beam Lumens	404
Beam Efficiency	N.A.
Field Lumens	1218
Field Efficiency	N.A.
Spill Lumens	622
Luminaire Lumens	1840
Total Efficiency	N.A.
Total Luminaire Watts	20
Ballast Factor	1.00

Zonal Lumen Summary

Zone	Lumens
0-10	448.28
10-20	523.01
20-30	366.80
30-40	260.98
40-50	145.46
50-60	67.32
60-70	20.96
70-80	5.44
80-90	0.37
90-100	0.00
100-110	0.00
110-120	0.00
120-130	0.00
130-140	0.00
140-150	0.00
150-160	0.00
160-170	0.00
170-180	0.00



Mounting Height: 20 ft.

Grid Spacing: 5 ft.

In the interest of product improvement, BEGA reserves the right to make technical changes without notice.

BEGA 1000 Bega Way, Carpinteria, CA 93013 (805)684-0533 Fax (805)566-9474 www.bega-us.com © Copyright BEGA-US 2022

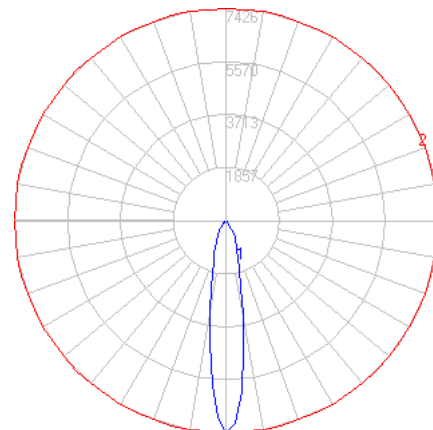
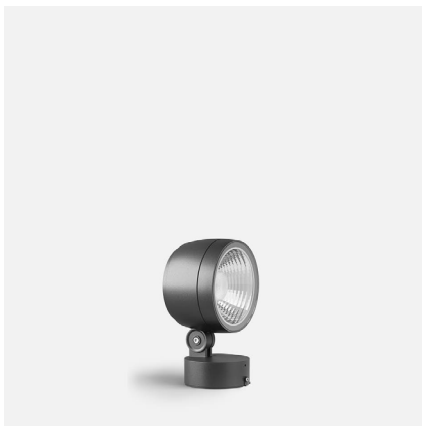
5/26/2022

BEGA

File: 84209K4_71118_BEGA_IES.ies

TEST: BE_84209K4_71118
 TEST LAB: BEGA
 DATE: 05/07/2019
 LUMINAIRE: 84 209K4 + 71118
 LAMP: 16.8W LED

*For additional CCTs, please consult factory

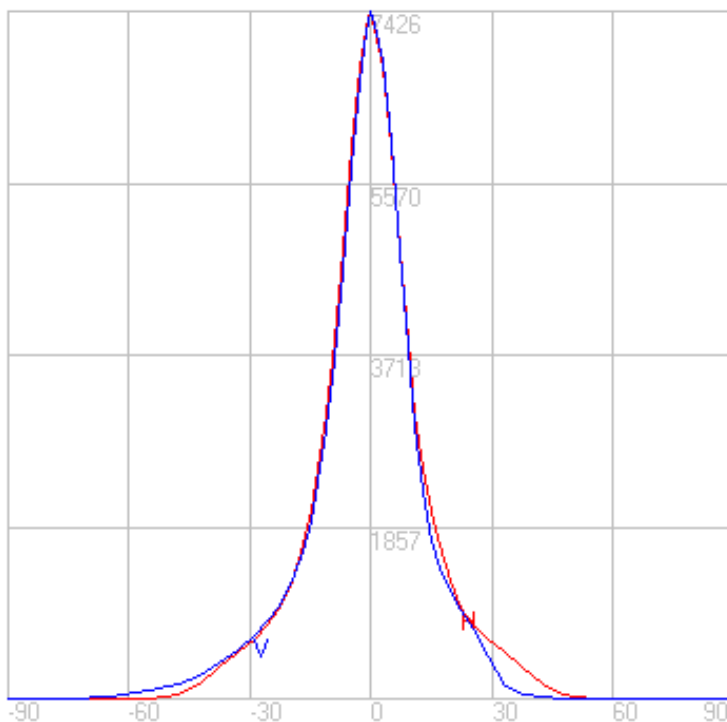
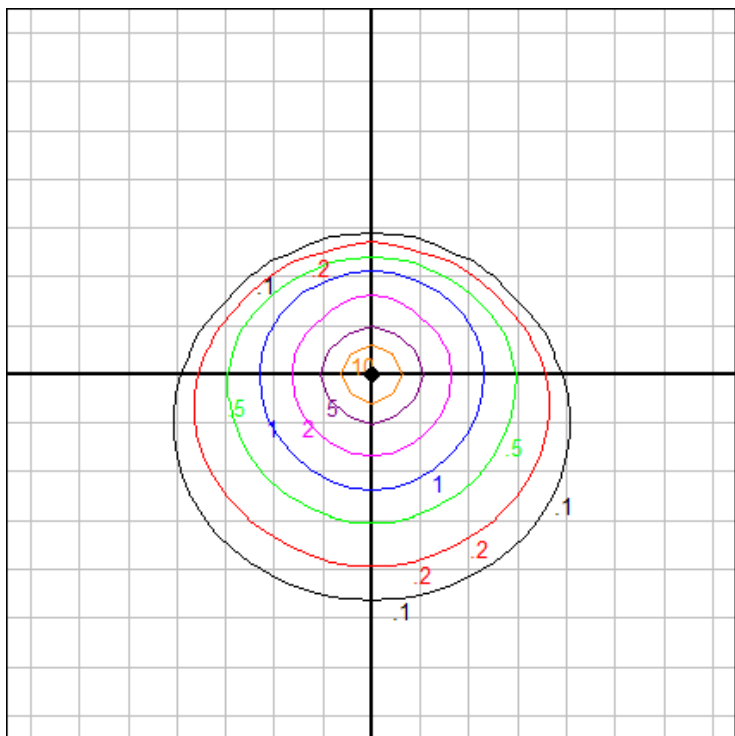


Characteristics

NEMA Type	4 H x 4 V
Maximum Candela	7426.1
Maximum Candela Angle	0 H 0 V
Horizontal Beam Angle (50%)	18.9
Vertical Beam Angle (50%)	18.1
Horizontal Field Angle (10%)	53.3
Vertical Field Angle (10%)	53.3
Lumens Per Lamp	N.A. (absolute)
Total Lamp Lumens	N.A. (absolute)
Beam Lumens	431
Beam Efficiency	N.A.
Field Lumens	1270
Field Efficiency	N.A.
Spill Lumens	466
Luminaire Lumens	1736
Total Efficiency	N.A.
Total Luminaire Watts	20
Ballast Factor	1.00

Zonal Lumen Summary

Zone	Lumens
0-10	478.49
10-20	541.52
20-30	377.10
30-40	216.33
40-50	86.29
50-60	27.42
60-70	7.46
70-80	1.67
80-90	0.08
90-100	0.00
100-110	0.00
110-120	0.00
120-130	0.00
130-140	0.00
140-150	0.00
150-160	0.00
160-170	0.00
170-180	0.00



Mounting Height: 20 ft.

Grid Spacing: 5 ft.

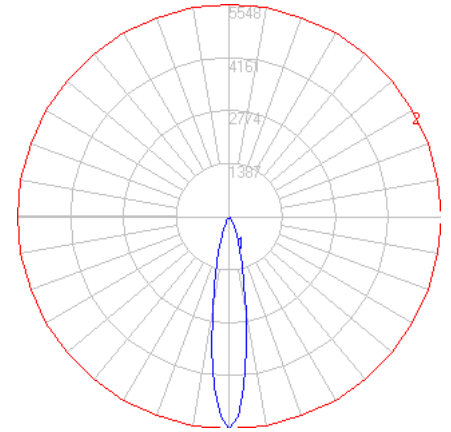
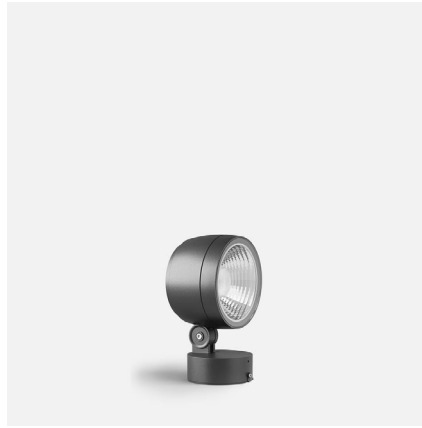
In the interest of product improvement, BEGA reserves the right to make technical changes without notice.

BEGA

File: 84209K4_71119_BEGA_IES.ies

TEST: BE_84209K4_71119
 TEST LAB: BEGA
 DATE: 05/07/2019
 LUMINAIRE: 84 209K4 + 71119
 LAMP: 16.8W LED

*For additional CCTs, please consult factory

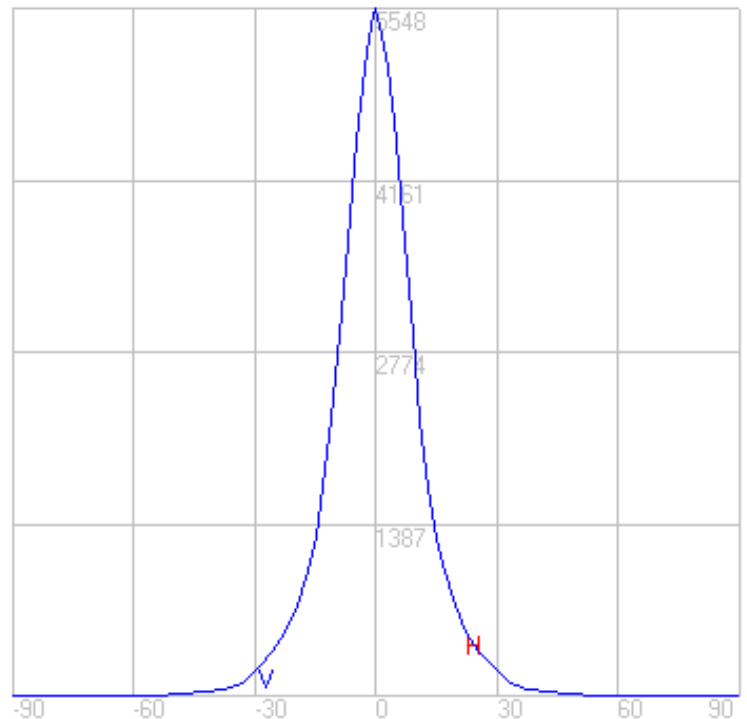
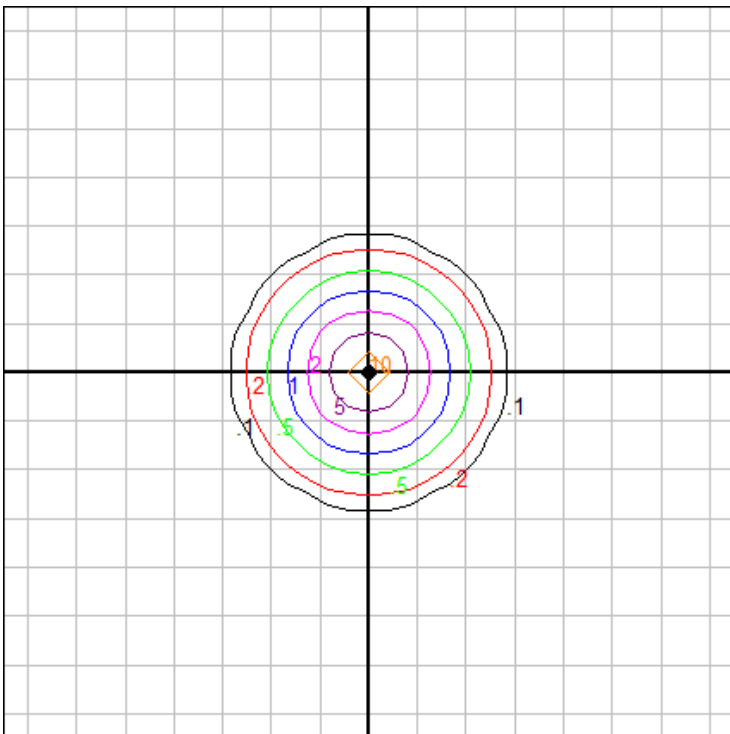


Characteristics

NEMA Type	3 H x 3 V
Maximum Candela	5548
Maximum Candela Angle	0 H 0 V
Horizontal Beam Angle (50%)	18.8
Vertical Beam Angle (50%)	18.8
Horizontal Field Angle (10%)	43.8
Vertical Field Angle (10%)	43.8
Lumens Per Lamp	N.A. (absolute)
Total Lamp Lumens	N.A. (absolute)
Beam Lumens	327
Beam Efficiency	N.A.
Field Lumens	784
Field Efficiency	N.A.
Spill Lumens	209
Luminaire Lumens	993
Total Efficiency	N.A.
Total Luminaire Watts	20
Ballast Factor	1.00

Zonal Lumen Summary

Zone	Lumens
0-10	362.94
10-20	371.99
20-30	180.83
30-40	53.25
40-50	18.03
50-60	6.10
60-70	1.51
70-80	0.24
80-90	0.00
90-100	0.00
100-110	0.00
110-120	0.00
120-130	0.00
130-140	0.00
140-150	0.00
150-160	0.00
160-170	0.00
170-180	0.00



Mounting Height: 20 ft.

Grid Spacing: 5 ft.

In the interest of product improvement, BEGA reserves the right to make technical changes without notice.

BEGA 1000 Bega Way, Carpinteria, CA 93013 (805)684-0533 Fax (805)566-9474 www.bega-us.com © Copyright BEGA-US 2022

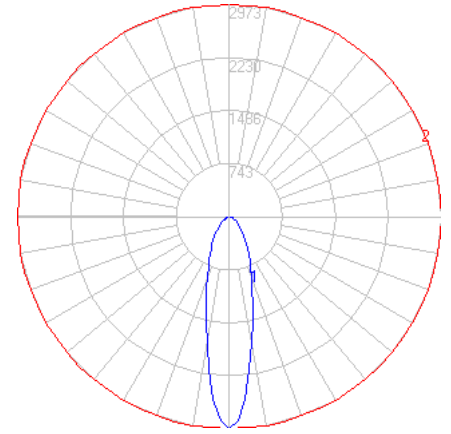
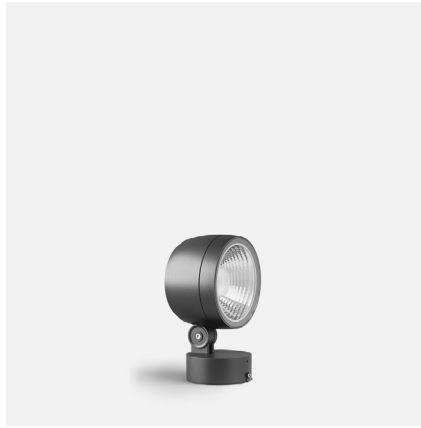
5/26/2022

BEGA

File: 84209K4_71120_BEGA_IES.ies

TEST: BE_84209K4_71120
TEST LAB: BEGA
DATE: 05/07/2019
LUMINAIRE: 84 209K4 + 71120
LAMP: 16.8W LED

*For additional CCTs, please consult factory

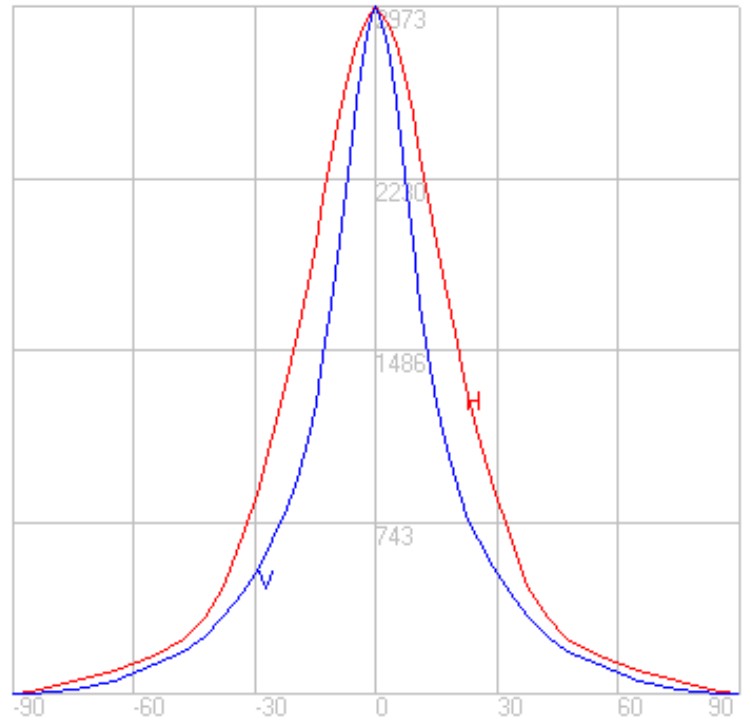
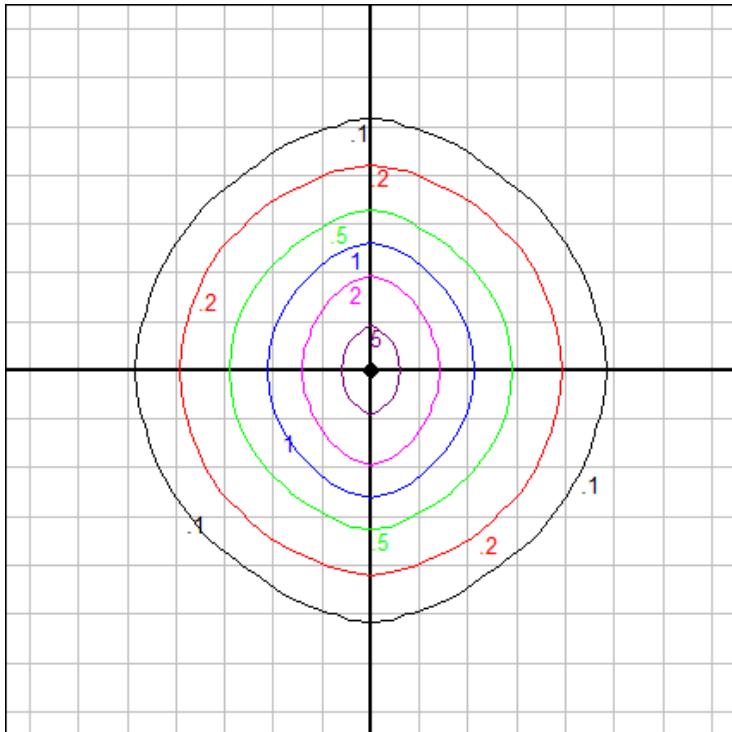


Characteristics

NEMA Type	5 H x 5 V
Maximum Candela	2972.9
Maximum Candela Angle	0 H 0 V
Horizontal Beam Angle (50%)	40.8
Vertical Beam Angle (50%)	25.6
Horizontal Field Angle (10%)	88.2
Vertical Field Angle (10%)	79.4
Lumens Per Lamp	N.A. (absolute)
Total Lamp Lumens	N.A. (absolute)
Beam Lumens	490
Beam Efficiency	N.A.
Field Lumens	1342
Field Efficiency	N.A.
Spill Lumens	363
Luminaire Lumens	1705
Total Efficiency	N.A.
Total Luminaire Watts	20
Ballast Factor	1.00

Zonal Lumen Summary

Zone	Lumens
0-10	236.62
10-20	428.74
20-30	383.82
30-40	280.65
40-50	176.41
50-60	105.70
60-70	59.54
70-80	26.56
80-90	4.06
90-100	0.00
100-110	0.00
110-120	0.00
120-130	0.00
130-140	0.00
140-150	0.00
150-160	0.00
160-170	0.00
170-180	0.00



Mounting Height: 20 ft.

Grid Spacing: 5 ft.

In the interest of product improvement, BEGA reserves the right to make technical changes without notice.

BEGA 1000 Bega Way, Carpinteria, CA 93013 (805)684-0533 Fax (805)566-9474 www.bega-us.com © Copyright BEGA-US 2022

5/26/2022