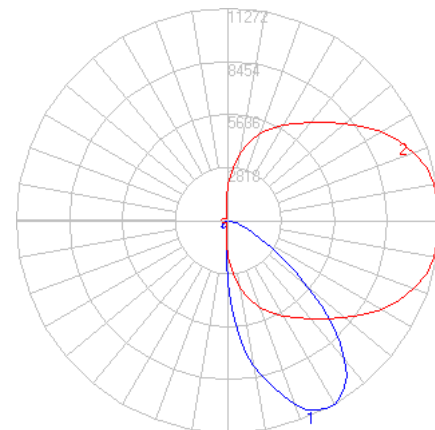


# BEGA

File: 84207K4\_BEGA\_IES.ies

TEST: BE\_84207K4  
 TEST LAB: BEGA  
 DATE: 10/8/2019  
 LUMINAIRE: 84 207K4  
 LAMP: 95.6W LED

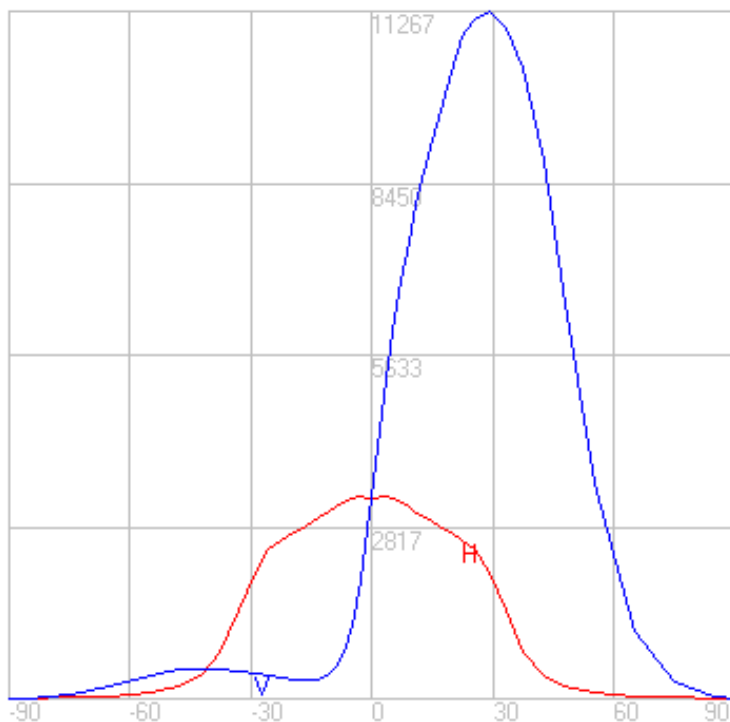
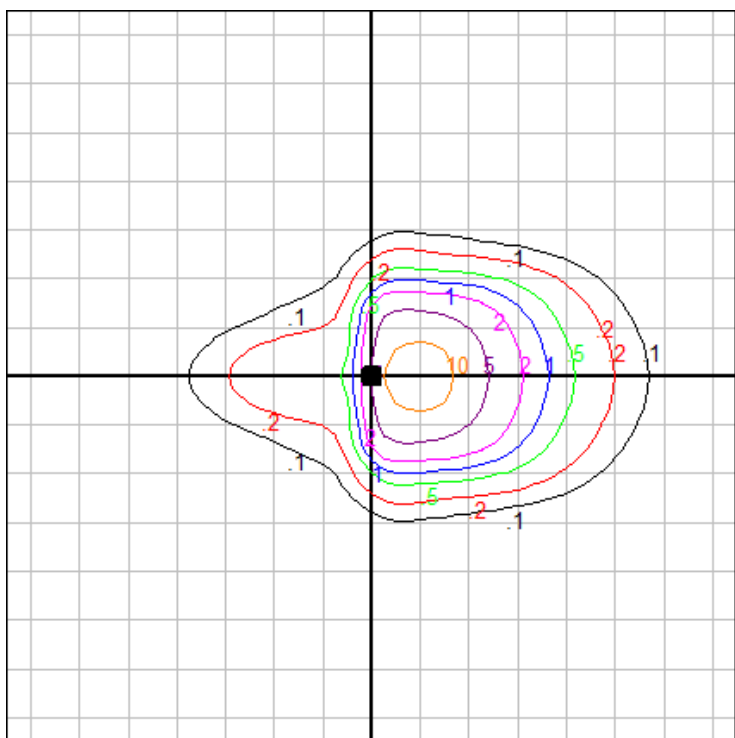


## Characteristics

NEMA Type	5 H x 5 V
Maximum Candela	11266.6
Maximum Candela Angle	0 H 29 V
Horizontal Beam Angle (50%)	50.8
Vertical Beam Angle (50%)	45.8
Horizontal Field Angle (10%)	72.5
Vertical Field Angle (10%)	70.3
Lumens Per Lamp	N.A. (absolute)
Total Lamp Lumens	N.A. (absolute)
Beam Lumens	4763
Beam Efficiency	N.A.
Field Lumens	6996
Field Efficiency	N.A.
Spill Lumens	795
Luminaire Lumens	7790
Total Efficiency	N.A.
Total Luminaire Watts	107
Ballast Factor	1.00

## Zonal Lumen Summary

Zone	Lumens
0-10	334.51
10-20	1084.51
20-30	1861.16
30-40	2072.19
40-50	1435.61
50-60	652.89
60-70	226.62
70-80	69.91
80-90	9.87
90-100	0.00
100-110	0.00
110-120	0.00
120-130	0.00
130-140	0.00
140-150	0.00
150-160	0.00
160-170	0.00
170-180	0.00



Mounting Height: 25 ft.

Grid Spacing: 10 ft.

In the interest of product improvement, BEGA reserves the right to make technical changes without notice.

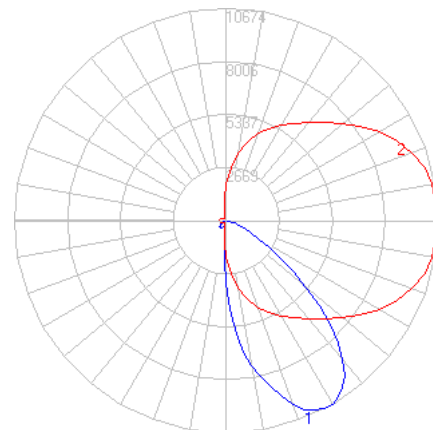
BEGA 1000 Bega Way, Carpinteria, CA 93013 (805)684-0533 Fax (805)566-9474 www.bega-us.com © Copyright BEGA-US 2022

8/8/2022

# BEGA

File: 84207K35\_BEGA\_IES.ies

TEST: BE\_84207K4  
 TEST LAB: BEGA  
 DATE: 10/8/2019  
 LUMINAIRE: 84 207K35  
 LAMP: 95.6W LED

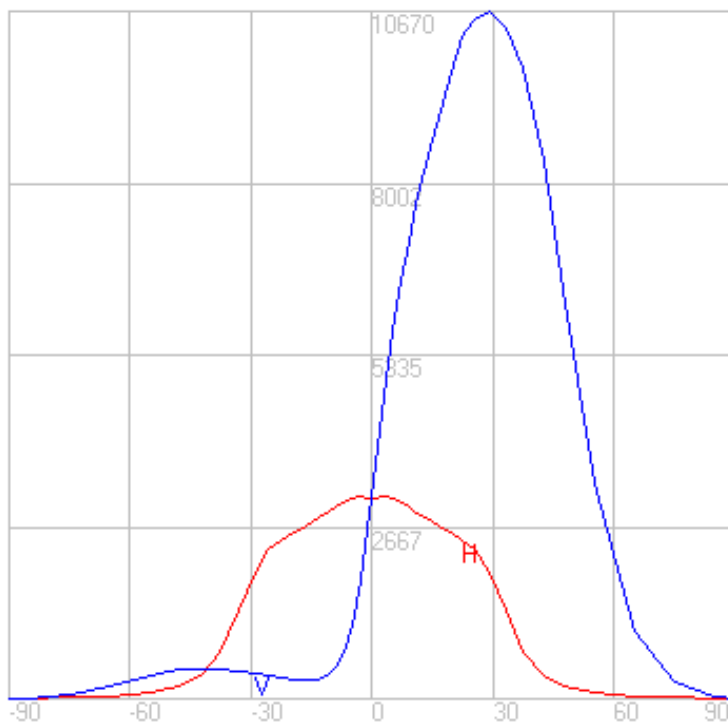
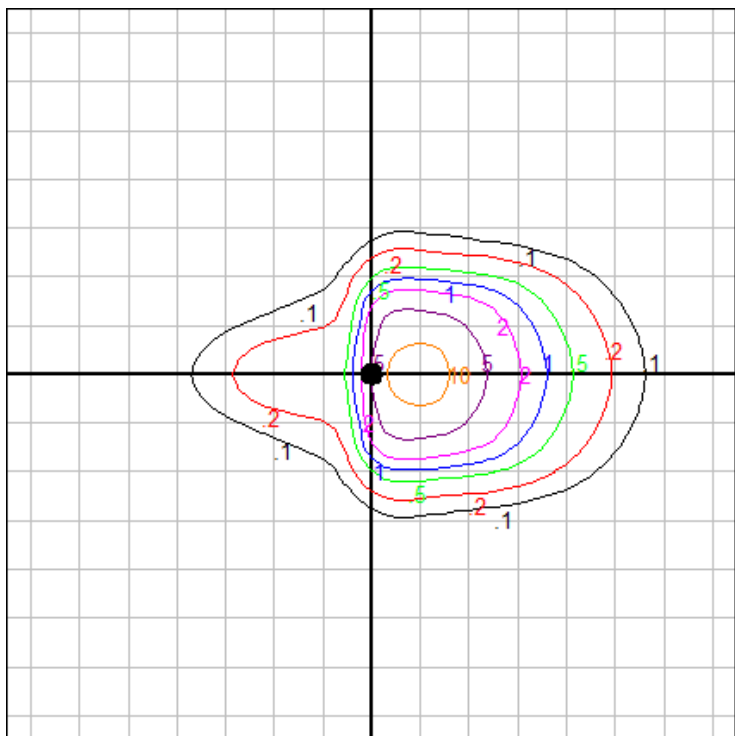


## Characteristics

NEMA Type	5 H x 5 V
Maximum Candela	10669.509
Maximum Candela Angle	0 H 29 V
Horizontal Beam Angle (50%)	50.8
Vertical Beam Angle (50%)	45.8
Horizontal Field Angle (10%)	72.5
Vertical Field Angle (10%)	70.3
Lumens Per Lamp	N.A. (absolute)
Total Lamp Lumens	N.A. (absolute)
Beam Lumens	4510
Beam Efficiency	N.A.
Field Lumens	6625
Field Efficiency	N.A.
Spill Lumens	753
Luminaire Lumens	7378
Total Efficiency	N.A.
Total Luminaire Watts	107
Ballast Factor	1.00

## Zonal Lumen Summary

Zone	Lumens
0-10	316.78
10-20	1027.03
20-30	1762.52
30-40	1962.36
40-50	1359.52
50-60	618.29
60-70	214.61
70-80	66.21
80-90	9.35
90-100	0.00
100-110	0.00
110-120	0.00
120-130	0.00
130-140	0.00
140-150	0.00
150-160	0.00
160-170	0.00
170-180	0.00



Mounting Height: 25 ft.

Grid Spacing: 10 ft.

In the interest of product improvement, BEGA reserves the right to make technical changes without notice.

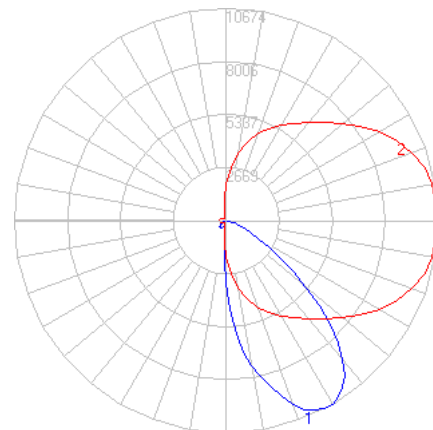
BEGA 1000 Bega Way, Carpinteria, CA 93013 (805)684-0533 Fax (805)566-9474 www.bega-us.com © Copyright BEGA-US 2022

8/8/2022

# BEGA

File: 84207K3\_BEGA\_IES.ies

TEST: BE\_84207K4  
 TEST LAB: BEGA  
 DATE: 10/8/2019  
 LUMINAIRE: 84 207K3  
 LAMP: 95.6W LED

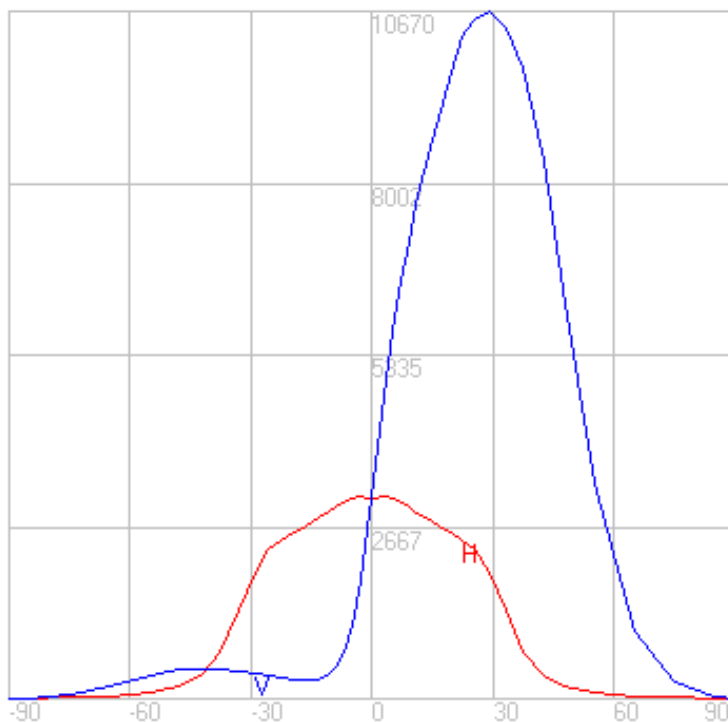
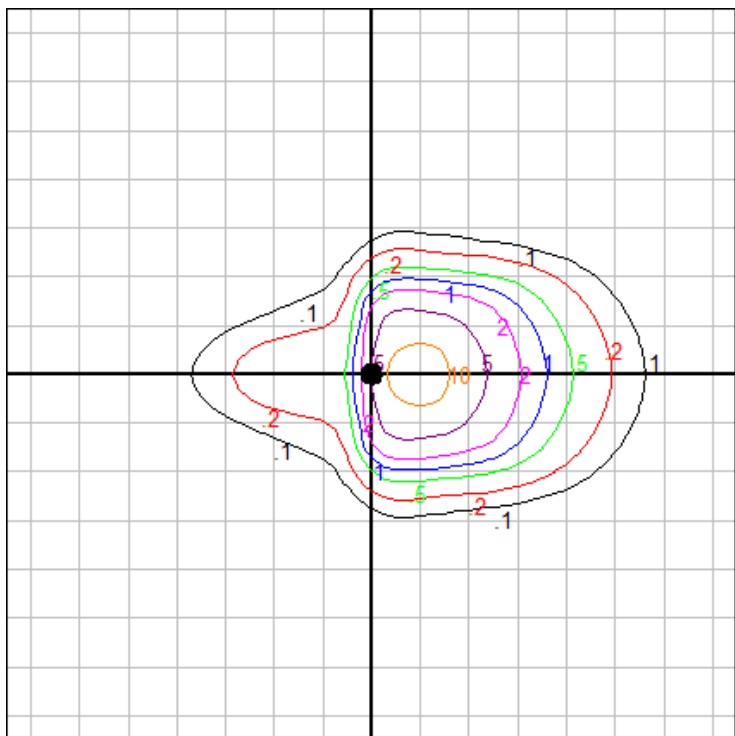


### Characteristics

NEMA Type	5 H x 5 V
Maximum Candela	10669.509
Maximum Candela Angle	0 H 29 V
Horizontal Beam Angle (50%)	50.8
Vertical Beam Angle (50%)	45.8
Horizontal Field Angle (10%)	72.5
Vertical Field Angle (10%)	70.3
Lumens Per Lamp	N.A. (absolute)
Total Lamp Lumens	N.A. (absolute)
Beam Lumens	4510
Beam Efficiency	N.A.
Field Lumens	6625
Field Efficiency	N.A.
Spill Lumens	753
Luminaire Lumens	7378
Total Efficiency	N.A.
Total Luminaire Watts	107
Ballast Factor	1.00

### Zonal Lumen Summary

Zone	Lumens
0-10	316.78
10-20	1027.03
20-30	1762.52
30-40	1962.36
40-50	1359.52
50-60	618.29
60-70	214.61
70-80	66.21
80-90	9.35
90-100	0.00
100-110	0.00
110-120	0.00
120-130	0.00
130-140	0.00
140-150	0.00
150-160	0.00
160-170	0.00
170-180	0.00



Mounting Height: 25 ft.

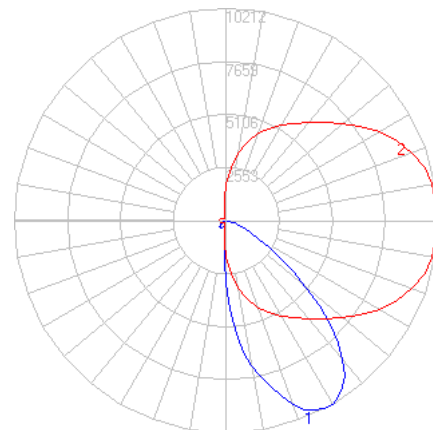
Grid Spacing: 10 ft.

In the interest of product improvement, BEGA reserves the right to make technical changes without notice.

# BEGA

File: 84207K27\_BEGA\_IES.ies

TEST: BE\_84207K4  
 TEST LAB: BEGA  
 DATE: 10/8/2019  
 LUMINAIRE: 84 207K27  
 LAMP: 95.6W LED

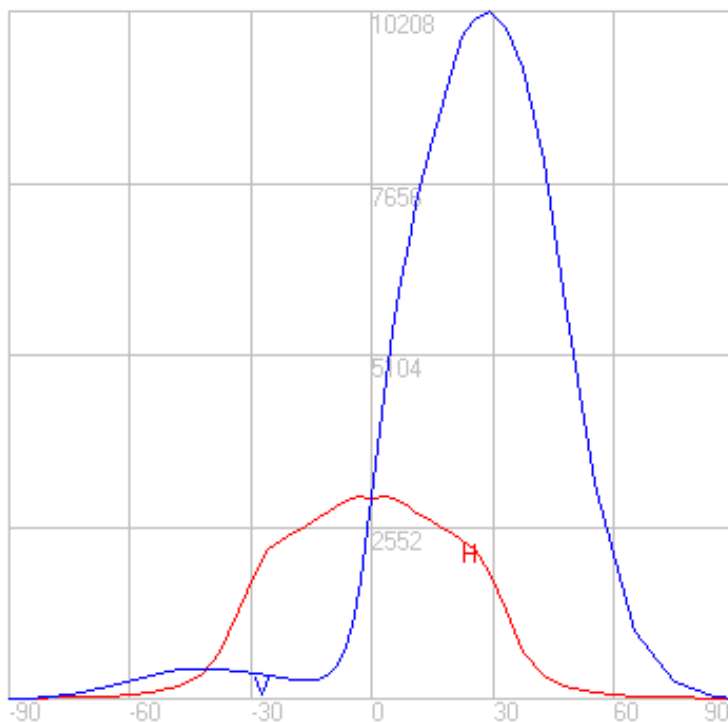
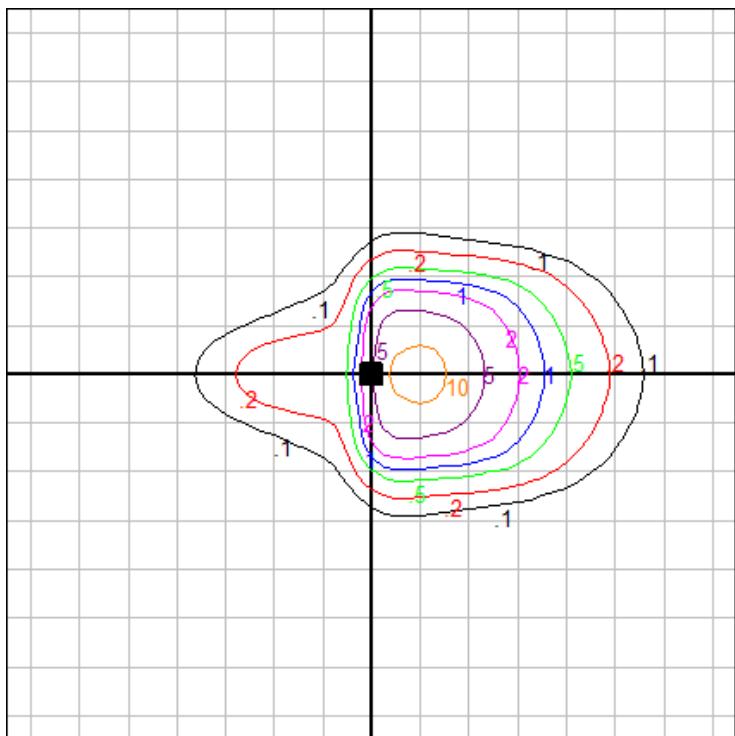


## Characteristics

NEMA Type	5 H x 5 V
Maximum Candela	10207.576
Maximum Candela Angle	0 H 29 V
Horizontal Beam Angle (50%)	50.8
Vertical Beam Angle (50%)	45.8
Horizontal Field Angle (10%)	72.5
Vertical Field Angle (10%)	70.3
Lumens Per Lamp	N.A. (absolute)
Total Lamp Lumens	N.A. (absolute)
Beam Lumens	4315
Beam Efficiency	N.A.
Field Lumens	6338
Field Efficiency	N.A.
Spill Lumens	720
Luminaire Lumens	7058
Total Efficiency	N.A.
Total Luminaire Watts	107
Ballast Factor	1.00

## Zonal Lumen Summary

Zone	Lumens
0-10	303.07
10-20	982.56
20-30	1686.21
30-40	1877.4
40-50	1300.66
50-60	591.52
60-70	205.32
70-80	63.34
80-90	8.94
90-100	0.00
100-110	0.00
110-120	0.00
120-130	0.00
130-140	0.00
140-150	0.00
150-160	0.00
160-170	0.00
170-180	0.00



Mounting Height: 25 ft.

Grid Spacing: 10 ft.

In the interest of product improvement, BEGA reserves the right to make technical changes without notice.