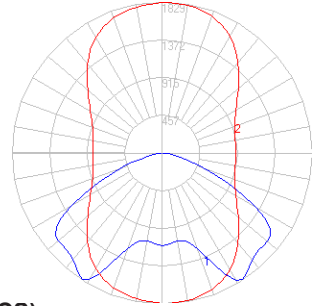


# BEGA

Photometric Filename: 84127.ies

TEST: N/A  
 TEST LAB: BEGA  
 DATE: 2/28/2017  
 LUMINAIRE: 84 127\*\*  
 LAMP: 78.4W LED

\*\* IES file based on single luminaire. See twin template below.



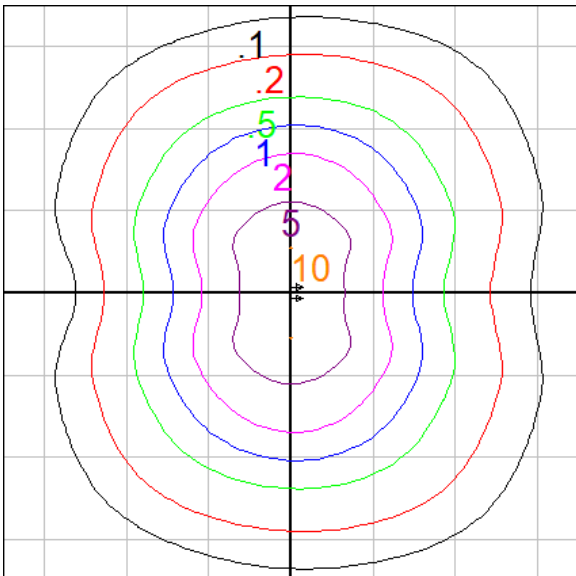
### Characteristics

|                                    |                      |
|------------------------------------|----------------------|
| IES Classification                 | Type II              |
| Longitudinal Classification        | Very Short           |
| Lumens Per Lamp                    | N.A. (absolute)      |
| Total Lamp Lumens                  | N.A. (absolute)      |
| Luminaire Lumens                   | 4781                 |
| Downward Total Efficiency          | N.A.                 |
| Total Luminaire Efficiency         | N.A.                 |
| Luminaire Efficacy Rating (LER)    | 110                  |
| Total Luminaire Watts              | 43.5                 |
| Ballast Factor                     | 1.00                 |
| Upward Waste Light Ratio           | 0.00                 |
| Max. Cd.                           | 1829.2 (275H, 32.5V) |
| Max. Cd. (<90 Vert.)               | 1829.2 (275H, 32.5V) |
| Max. Cd. (At 90 Deg. Vert.)        | 0 (0.0%Lum)          |
| Max. Cd. (80 to <90 Deg. Vert.)    | 203.8 (4.3%Lum)      |
| Cutoff Classification (deprecated) | N.A. (absolute)      |

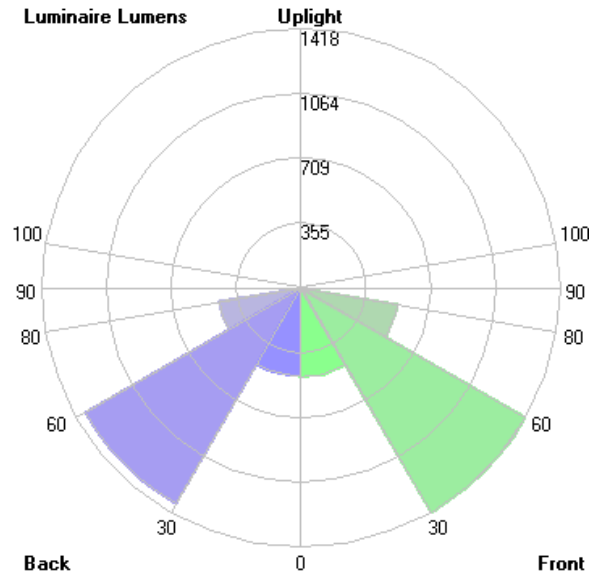
### Lum. Classification System (LCS)

| LCS Zone     | Lumens        | %Lamp       | %Lum         |
|--------------|---------------|-------------|--------------|
| FL (0-30)    | 486.8         | N.A.        | 10.2         |
| FM (30-60)   | 1418.3        | N.A.        | 29.7         |
| FH (60-80)   | 533.6         | N.A.        | 11.2         |
| FVH(80-90)   | 32.0          | N.A.        | 0.7          |
| BL (0-30)    | 479.4         | N.A.        | 10.0         |
| BM (30-60)   | 1360.3        | N.A.        | 28.5         |
| BH (60-80)   | 453.4         | N.A.        | 9.5          |
| BVH(80-90)   | 17.2          | N.A.        | 0.4          |
| UL (90-100)  | 0.0           | N.A.        | 0.0          |
| UH (100-180) | 0.0           | N.A.        | 0.0          |
| <b>Total</b> | <b>4781.0</b> | <b>N.A.</b> | <b>100.0</b> |

**BUG Rating B2-U0-G1**



Twin template: Mounting Height = 15 ft. Grid Spacing = 14 ft.



In the interest of product improvement, BEGA reserves the right to make technical changes without notice.