

**Application**

In-grade adjustable floodlight luminaires. The patented mounting system allows for installation in pre-cored holes such as stone, tile or decks. These luminaires are designed to bear pressure loads up to 4400 lbs. from vehicles with pneumatic tires. The luminaires must not be used for traffic lanes where they are subject to horizontal pressure from vehicles braking, accelerating and changing direction.

**Materials**

- Clear safety glass
- Corrosion-resistant 304 grade stainless steel
- Fully potted waterstopper cable
- High temperature silicone gasket
- Mechanically captive stainless steel fasteners
- Stainless steel screw clamps
- Pure anodized aluminum reflector

**NRTL** listed to North American Standards, suitable for wet locations  
Protection class IP 68

**Weight:** 13.3lbs.

**Electrical**

Operating voltage	120-277VAC
Minimum start temperature	-30° C
LED module wattage	18.5 W
System wattage	22.0 W
Controllability	0-10V dimmable
Color rendering index	Ra > 80
Luminaire lumens	1130lm
LED service life (L70)	60000hrs

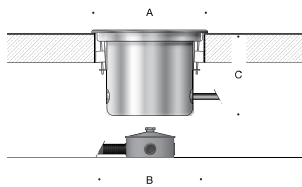
**LED color temperature**

- 4000K (K4)
- 3500K (K35)
- 3000K (K3)
- 2700K (K27)

**BEGA** can supply you with suitable LED replacement modules for up to 20 years after the purchase of LED luminaires - see website for details

**Finish**

#4 brushed stainless steel. Custom colors are not available.



**In-grade luminaire · Adjustable**

	LED	□	A	B	C
<b>B84114</b>	18.5 W	9°	11	10 <sup>1</sup> / <sub>8</sub>	7 <sup>1</sup> / <sub>4</sub>

Type:

BEGA Product:

Project:

Modified:

**Available options**

- FSC
- NSL
- Fusing
- Non-skid lens

