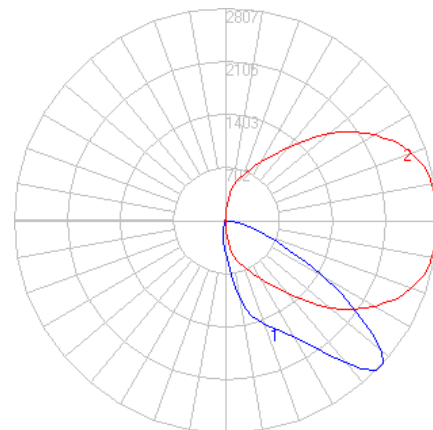


BEGA

File: 84107K4.ies

TEST: BE_84107K4
 TEST LAB: BEGA
 DATE: 02/15/2019
 LUMINAIRE: 84 107K4
 LAMP: 19.4W LED



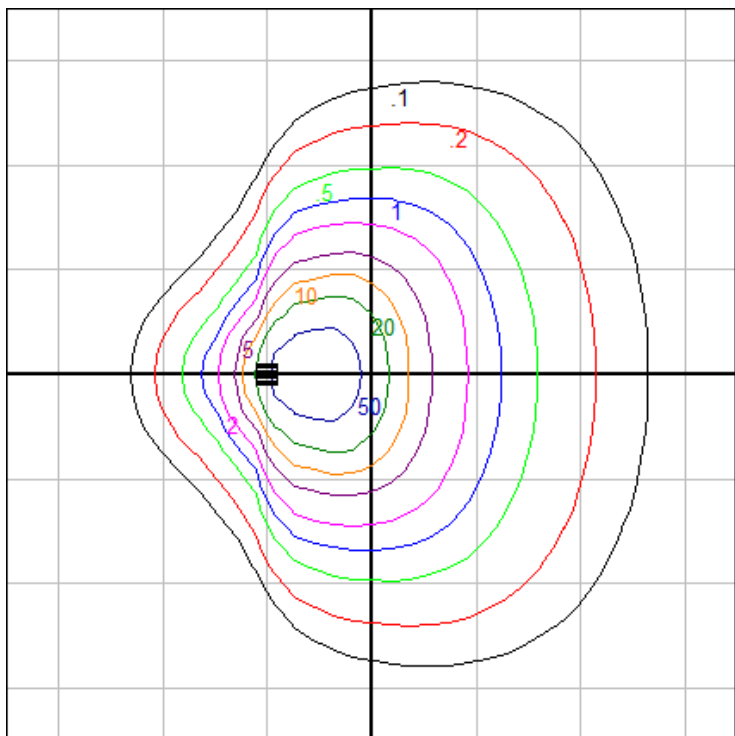
Characteristics

IES Classification	Type III
Longitudinal Classification	Very Short
Lumens Per Lamp	N.A. (absolute)
Total Lamp Lumens	N.A. (absolute)
Luminaire Lumens	2661
Downward Total Efficiency	N.A.
Total Luminaire Efficiency	N.A.
Luminaire Efficacy Rating (LER)	111
Total Luminaire Watts	24
Ballast Factor	1.00
Upward Waste Light Ratio	0.00
Max. Cd.	2806.8 (360H, 47.5V)
Max. Cd. (<90 Vert.)	2806.8 (360H, 47.5V)
Max. Cd. (At 90 Deg. Vert.)	1 (0.0%Lum)
Max. Cd. (80 to <90 Deg. Vert.)	158.3 (5.9%Lum)
Cutoff Classification (deprecated)	N.A. (absolute)

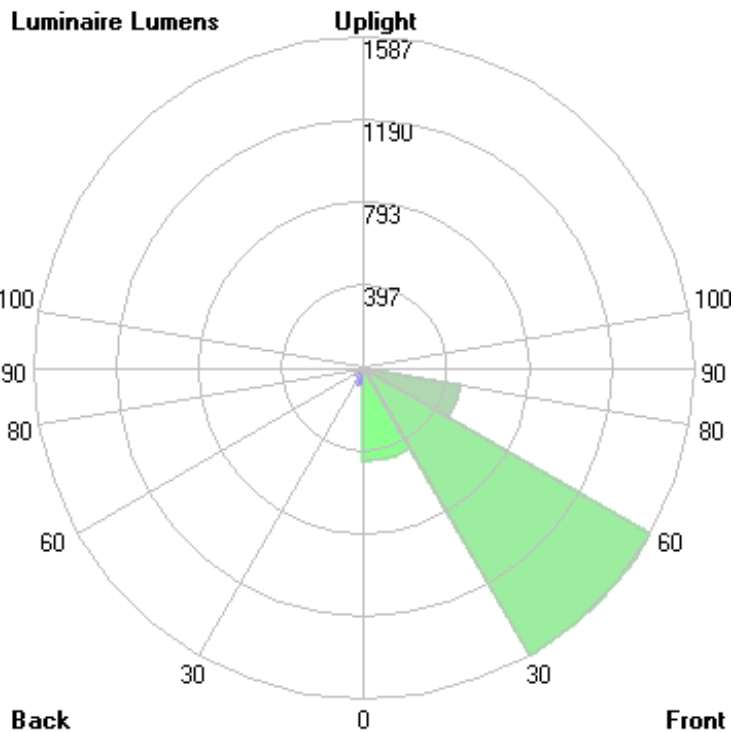
Lum. Classification System (LCS)

LCS Zone	Lumens	%Lamp	%Lum
FL (0-30)	444.7	N.A.	16.7
FM (30-60)	1586.9	N.A.	59.6
FH (60-80)	467.3	N.A.	17.6
FVH (80-90)	21.7	N.A.	0.8
BL (0-30)	83.4	N.A.	3.1
BM (30-60)	47.1	N.A.	1.8
BH (60-80)	9.2	N.A.	0.3
BVH (80-90)	0.6	N.A.	0.0
UL (90-100)	< 0.05	N.A.	0.0
UH (100-180)	0.0	N.A.	0.0
Total	2660.9	N.A.	100.0

BUG Rating B0-U1-G1



Grid Spacing: 5 ft.



In the interest of product improvement, BEGA reserves the right to make technical changes without notice.

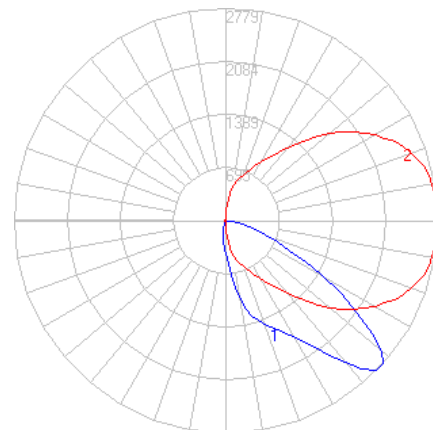
BEGA 1000 Bega Way, Carpinteria, CA 93013 (805)684-0533 Fax (805)566-9474 www.bega-us.com © Copyright BEGA-US 2020

12/03/20

BEGA

File: 84107K35.ies

TEST: BE_84107K4
 TEST LAB: BEGA
 DATE: 02/15/2019
 LUMINAIRE: 84 107K35
 LAMP: 19.4W LED



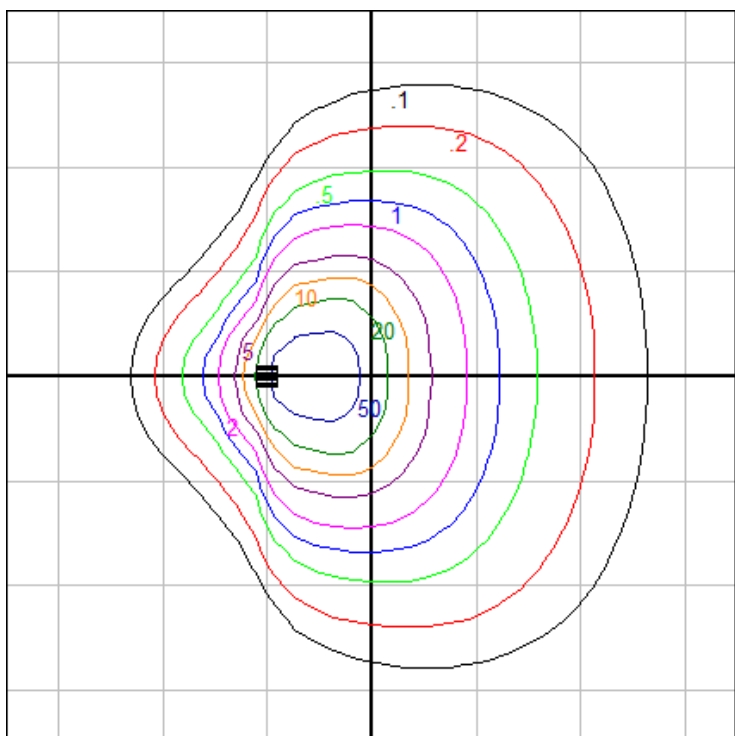
Characteristics

IES Classification	Type III
Longitudinal Classification	Very Short
Lumens Per Lamp	N.A. (absolute)
Total Lamp Lumens	N.A. (absolute)
Luminaire Lumens	2634
Downward Total Efficiency	N.A.
Total Luminaire Efficiency	N.A.
Luminaire Efficacy Rating (LER)	110
Total Luminaire Watts	24
Ballast Factor	1.00
Upward Waste Light Ratio	0.00
Max. Cd.	2778.732 (360H, 47.5V)
Max. Cd. (<90 Vert.)	2778.732 (360H, 47.5V)
Max. Cd. (At 90 Deg. Vert.)	.99 (0.0%Lum)
Max. Cd. (80 to <90 Deg. Vert.)	156.717 (5.9%Lum)
Cutoff Classification (deprecated)	N.A. (absolute)

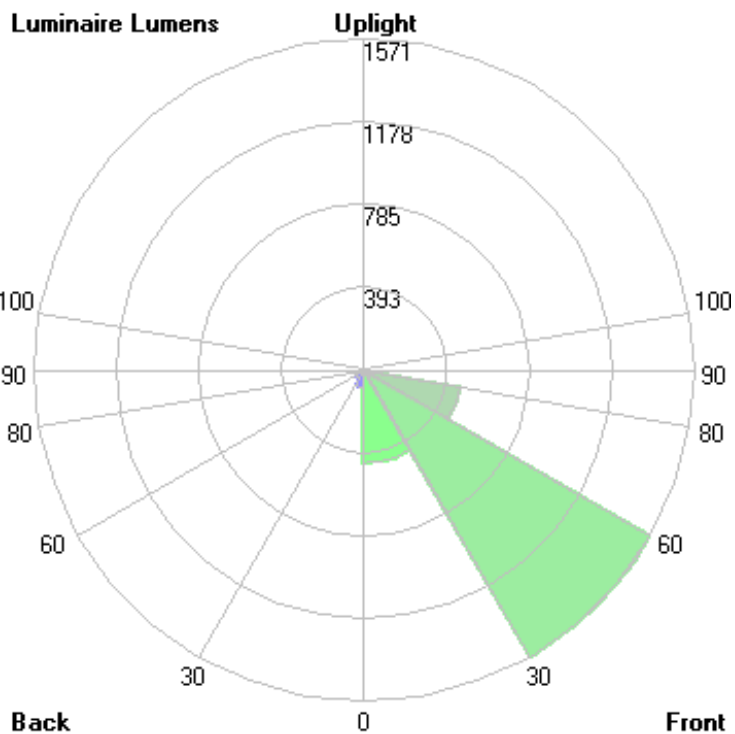
Lum. Classification System (LCS)

LCS Zone	Lumens	%Lamp	%Lum
FL (0-30)	440.2	N.A.	16.7
FM (30-60)	1571.0	N.A.	59.6
FH (60-80)	462.6	N.A.	17.6
FVH (80-90)	21.5	N.A.	0.8
BL (0-30)	82.6	N.A.	3.1
BM (30-60)	46.6	N.A.	1.8
BH (60-80)	9.1	N.A.	0.3
BVH (80-90)	0.6	N.A.	0.0
UL (90-100)	< 0.05	N.A.	0.0
UH (100-180)	0.0	N.A.	0.0
Total	2634.2	N.A.	100.0

BUG Rating B0-U1-G1



Grid Spacing: 5 ft.



In the interest of product improvement, BEGA reserves the right to make technical changes without notice.

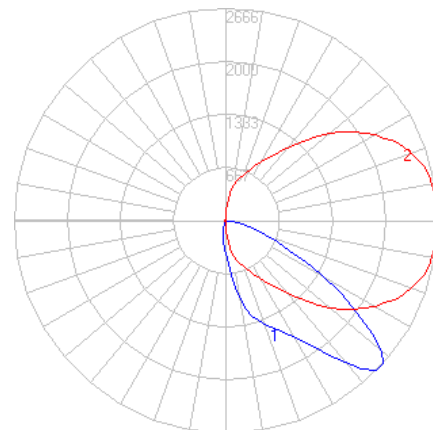
BEGA 1000 Bega Way, Carpinteria, CA 93013 (805)684-0533 Fax (805)566-9474 www.bega-us.com © Copyright BEGA-US 2020

12/03/20

BEGA

File: 84107K3.ies

TEST: BE_84107K4
 TEST LAB: BEGA
 DATE: 02/15/2019
 LUMINAIRE: 84 107K3
 LAMP: 19.4W LED



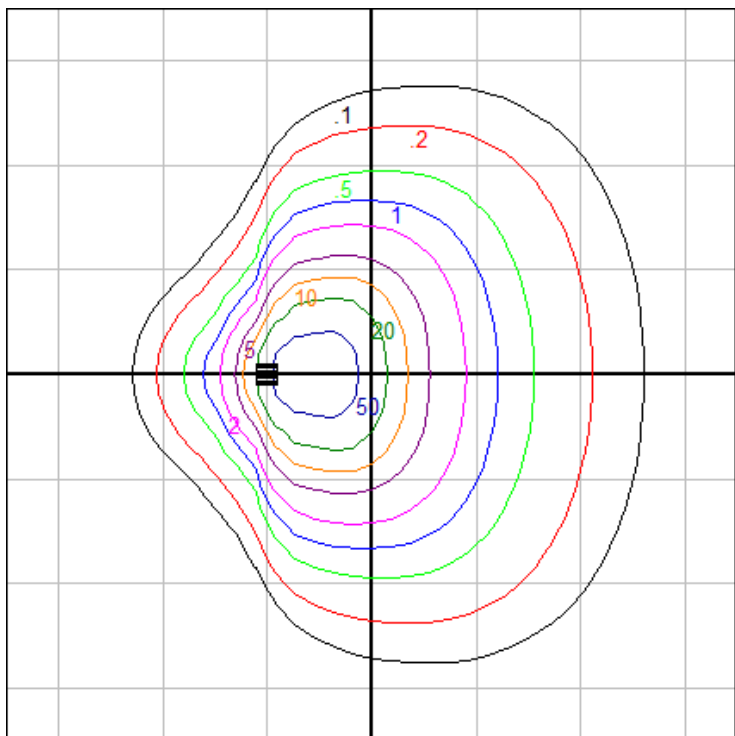
Characteristics

IES Classification	Type III
Longitudinal Classification	Very Short
Lumens Per Lamp	N.A. (absolute)
Total Lamp Lumens	N.A. (absolute)
Luminaire Lumens	2528
Downward Total Efficiency	N.A.
Total Luminaire Efficiency	N.A.
Luminaire Efficacy Rating (LER)	105
Total Luminaire Watts	24
Ballast Factor	1.00
Upward Waste Light Ratio	0.00
Max. Cd.	2666.46 (360H, 47.5V)
Max. Cd. (<90 Vert.)	2666.46 (360H, 47.5V)
Max. Cd. (At 90 Deg. Vert.)	.95 (0.0%Lum)
Max. Cd. (80 to <90 Deg. Vert.)	150.385 (5.9%Lum)
Cutoff Classification (deprecated)	N.A. (absolute)

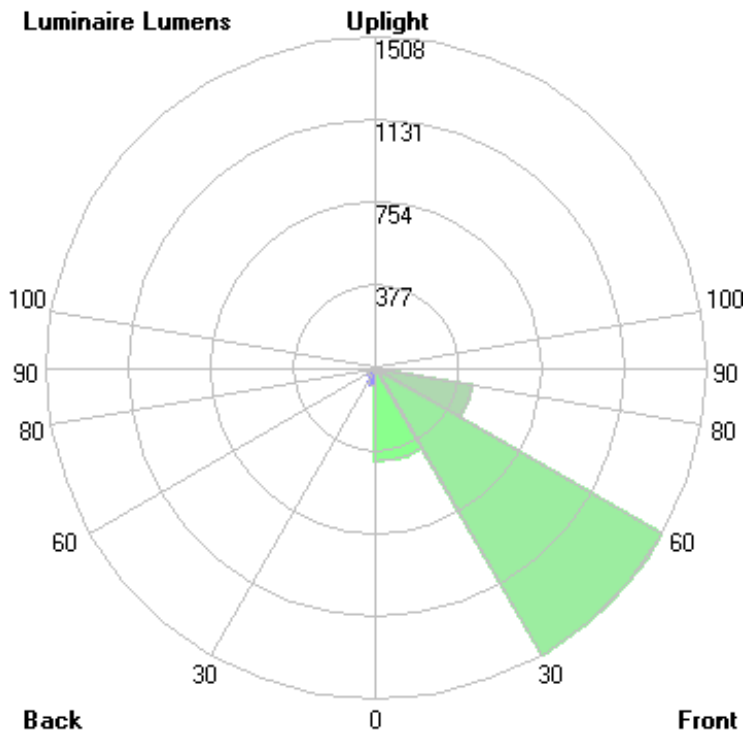
Lum. Classification System (LCS)

LCS Zone	Lumens	%Lamp	%Lum
FL (0-30)	422.4	N.A.	16.7
FM (30-60)	1507.5	N.A.	59.6
FH (60-80)	443.9	N.A.	17.6
FVH (80-90)	20.6	N.A.	0.8
BL (0-30)	79.3	N.A.	3.1
BM (30-60)	44.7	N.A.	1.8
BH (60-80)	8.7	N.A.	0.3
BVH (80-90)	0.6	N.A.	0.0
UL (90-100)	< 0.05	N.A.	0.0
UH (100-180)	0.0	N.A.	0.0
Total	2527.7	N.A.	100.0

BUG Rating B0-U1-G1



Grid Spacing: 5 ft.

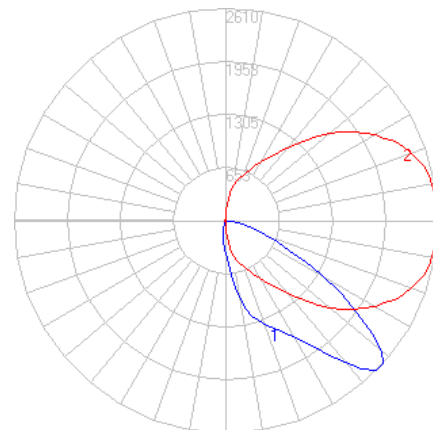


In the interest of product improvement, BEGA reserves the right to make technical changes without notice.

BEGA

File: 84107K27.ies

TEST: BE_84107K4
 TEST LAB: BEGA
 DATE: 02/15/2019
 LUMINAIRE: 84 107K27
 LAMP: 19.4W LED



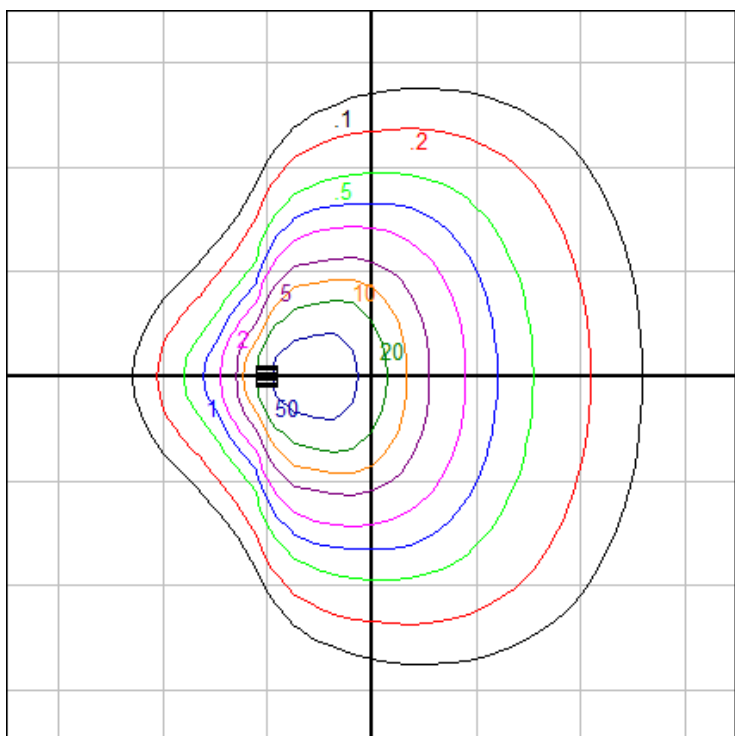
Characteristics

IES Classification	Type III
Longitudinal Classification	Very Short
Lumens Per Lamp	N.A. (absolute)
Total Lamp Lumens	N.A. (absolute)
Luminaire Lumens	2475
Downward Total Efficiency	N.A.
Total Luminaire Efficiency	N.A.
Luminaire Efficacy Rating (LER)	103
Total Luminaire Watts	24
Ballast Factor	1.00
Upward Waste Light Ratio	0.00
Max. Cd.	2610.324 (360H, 47.5V)
Max. Cd. (<90 Vert.)	2610.324 (360H, 47.5V)
Max. Cd. (At 90 Deg. Vert.)	.93 (0.0%Lum)
Max. Cd. (80 to <90 Deg. Vert.)	147.219 (5.9%Lum)
Cutoff Classification (deprecated)	N.A. (absolute)

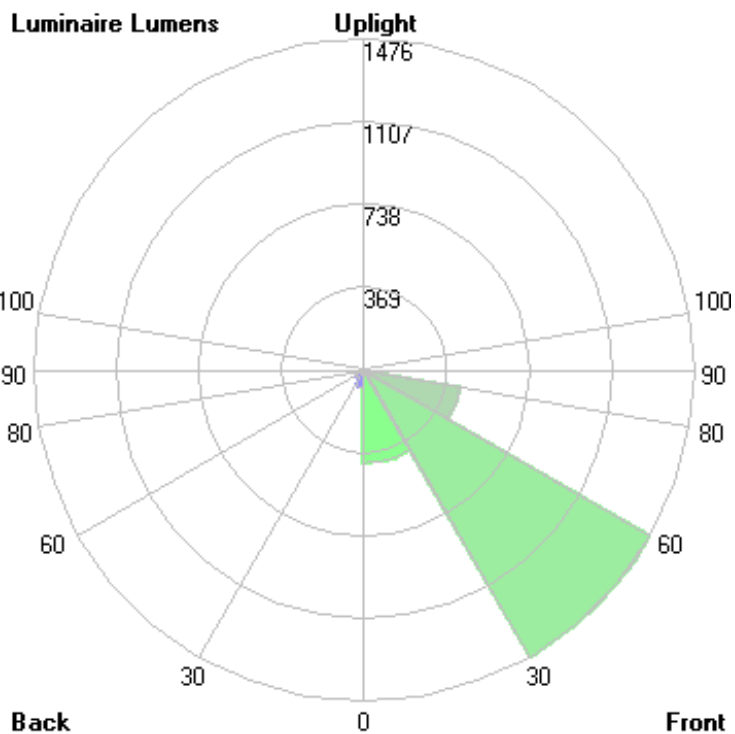
Lum. Classification System (LCS)

LCS Zone	Lumens	%Lamp	%Lum
FL (0-30)	413.5	N.A.	16.7
FM (30-60)	1475.8	N.A.	59.6
FH (60-80)	434.5	N.A.	17.6
FVH (80-90)	20.2	N.A.	0.8
BL (0-30)	77.6	N.A.	3.1
BM (30-60)	43.8	N.A.	1.8
BH (60-80)	8.5	N.A.	0.3
BVH (80-90)	0.6	N.A.	0.0
UL (90-100)	< 0.05	N.A.	0.0
UH (100-180)	0.0	N.A.	0.0
Total	2474.5	N.A.	100.0

BUG Rating B0-U1-G1



Grid Spacing: 5 ft.



In the interest of product improvement, BEGA reserves the right to make technical changes without notice.