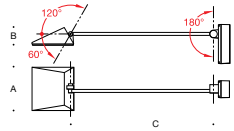


**Tools Required:**

- 4mm hex head screwdriver
- 6mm hex head screwdriver

**Overview:**

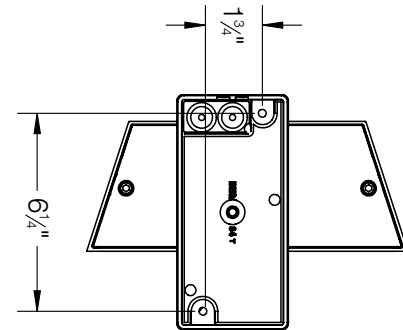
LED Watts: 19.4W  
 System Watts: 24.0W  
 Controllability: 0-10V, TRIAC, and ELV dimmable  
 Weight: 10.1 lbs.  
 Protection Class: IP65


**Dimensions**

**A:** 10-1/4"  
**B:** 4-1/8"  
**C:** 27-1/4"  
**D:** 7-1/2"


**Notice to Installer:**

1. See page 2 for specific product safety warnings.
2. In conformance with UL Standard 1598, a silicone based sealant must be used between luminaire and supporting surface.
3. For ceiling and wall applications only.
4. Luminaire mounts directly to finished surface over a standard vertical single gang wiring box (by others)

**Figure 1:**

**84100 Installation:**

1. Loosen the (4) 4mm hex screw on the fixture canopy to remove luminaire base.
2. Feed luminaire wiring through the luminaire base into wiring box.
3. Make supply wiring and luminaire wiring connections inside the wiring box:  
 MAIN VOLTAGE SUPPLY WIRE TO BLACK LUMINAIRE WIRE  
 NEUTRAL (COMMON) SUPPLY WIRE TO WHITE LUMINAIRE WIRE  
 GREEN GROUND WIRE TO GREEN LUMINAIRE WIRE  
 Dimming (if applicable):  
 DIMMING CONTROL WIRE (+) TO POSITIVE DRIVER DIM CONTROL WIRE  
 DIMMING CONTROL WIRE (-) TO NEGATIVE DRIVER DIM CONTROL WIRE
4. Mount luminaire to ceiling or wall surface using appropriate hardware by others. Fixture mounts directly to finished surface over recessed wiring box.
5. Place a small bead of silicone around the back side of the mounting plate that will come in contact with the finished surface (exterior applications only).
6. Replace luminaire canopy (with luminaire attached) and tighten (4) 4mm hex head screws to secure into place.
7. To adjust head angle, use 6mm hex key to loosen joint at the head and/or canopy of the fixture. Adjust as needed and re-tighten to fix in place.

**Accessories**

Please refer to the appropriate accessory installation sheet for further instruction when applicable.

**Maintenance:**

Clean regularly with solvent-free cleaner removing dirt and debris. Do not use high pressure cleaners.

**Replacement Parts**

See label inside of fixture for LED replacement part number.

Consult factory for all other replacement components.

**Product Safety Warnings:**

**THIS PRODUCT MUST BE INSTALLED IN ACCORDANCE WITH THE APPLICABLE INSTALLATION CODE BY A PERSON FAMILIAR WITH THE CONSTRUCTION AND OPERATION OF THE PRODUCT AND THE HAZARDS INVOLVED.  
SUITABLE FOR WET LOCATIONS.  
MIN 60°C SUPPLY CONDUCTORS.**

**CE PRODUIT DOIT ÊTRE INSTALLÉ SELON LE CODE D'INSTALLATION PERTINENT, PAR UNE PERSONNE QUI CONNAÎT BIEN LE PRODUIT ET SON FONCTIONNEMENT AINSI QUE LES RISQUES INHÉRENTS.  
CONVIENT AUX EMPLACEMENTS MOUILLÉS.  
LES FILS D'ALIMENTATION 60°C MIN.**