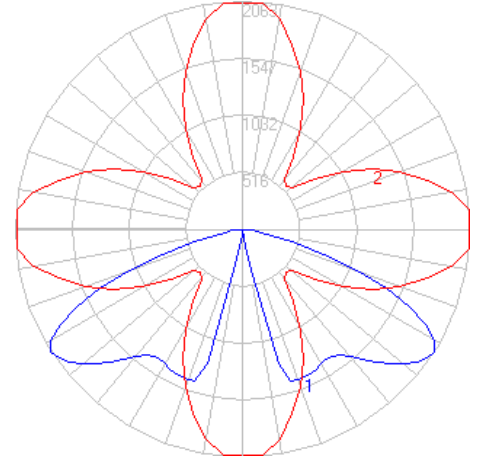


BEGA

Photometric Filename: 84083.ies

TEST: BE_84083
 TEST LAB: BEGA
 DATE: 7/17/2017
 LUMINAIRE: 84 083
 LAMP: 59.2W LED



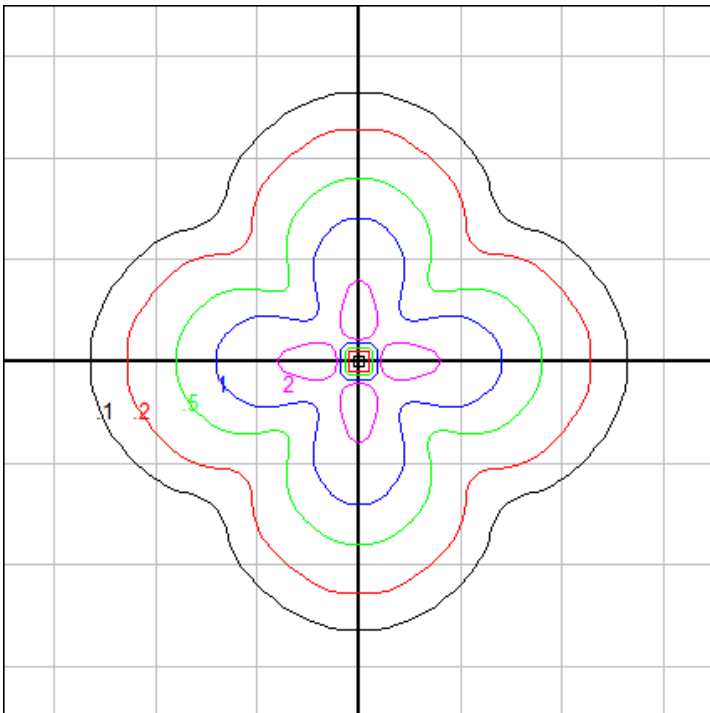
Characteristics

IES Classification	Type VS
Longitudinal Classification	Short
Lumens Per Lamp	N.A. (absolute)
Total Lamp Lumens	N.A. (absolute)
Luminaire Lumens	4913
Downward Total Efficiency	N.A.
Total Luminaire Efficiency	N.A.
Luminaire Efficacy Rating (LER)	74
Total Luminaire Watts	66
Ballast Factor	1.00
Upward Waste Light Ratio	0.00
Max. Cd.	2063.1 (85H, 57.5V)
Max. Cd. (<90 Vert.)	2063.1 (85H, 57.5V)
Max. Cd. (At 90 Deg. Vert.)	0 (0.0%Lum)
Max. Cd. (80 to <90 Deg. Vert.)	165.8 (3.4%Lum)
Cutoff Classification (deprecated)	N.A. (absolute)

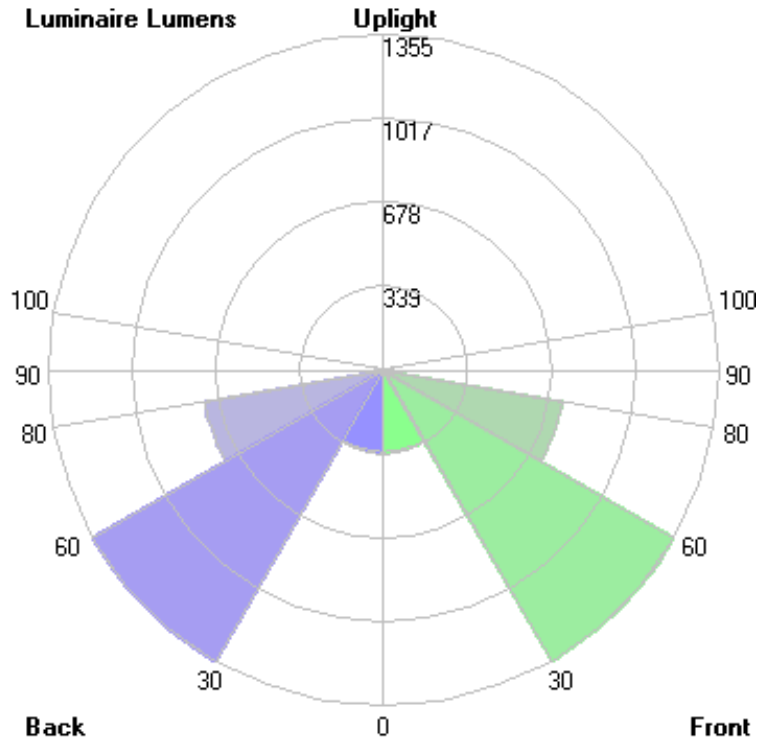
Lum. Classification System (LCS)

LCS Zone	Lumens	%Lamp	%Lum
FL (0-30)	329.9	N.A.	6.7
FM (30-60)	1355.5	N.A.	27.6
FH (60-80)	734.6	N.A.	15.0
FVH(80-90)	36.4	N.A.	0.7
BL (0-30)	329.9	N.A.	6.7
BM (30-60)	1355.5	N.A.	27.6
BH (60-80)	734.6	N.A.	15.0
BVH(80-90)	36.4	N.A.	0.7
UL (90-100)	0.0	N.A.	0.0
UH (100-180)	0.0	N.A.	0.0
Total	4912.8	N.A.	100.0

BUG Rating B2-U0-G1



Grid Spacing = 20 ft.



In the interest of product improvement, BEGA reserves the right to make technical changes without notice.