

**Application**

Pole-top luminaire with asymmetric wide beam light distribution. Designed to illuminate roadways, squares, driveways and pedestrian areas while meeting full cutoff requirements.

**Materials**

Clear safety glass  
 Marine grade, copper free (≤0.3% copper content) A360.0 aluminum alloy  
 Silicone applied robotically to casting, plasma treated for increased adhesion  
 High temperature silicone gasket  
 Pure anodized aluminum reflector

**NRTL** listed to North American Standards, suitable for wet locations  
 Protection class IP 66

**Weight:** 29.0lbs.

**EPA (Effective projection area):** 1.4 sq. ft.

**Electrical**

Operating voltage 120-277VAC  
 Minimum start temperature -30° C  
 LED module wattage 23.6W  
 System wattage 28.0W  
 Controllability 0-10V dimmable  
 Color rendering index Ra > 80  
 Luminaire lumens 3385lm  
 LED service life (L70) 60000hrs

**LED color temperature**

4000K (K4)  
 3500K (K35)  
 3000K (K3)  
 2700K (K27)

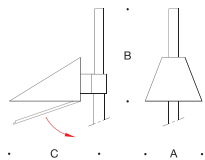
**BEGA** can supply you with suitable LED replacement modules for up to 20 years after the purchase of LED luminaires - see website for details

**Finish**

All BEGA standard finishes are matte, textured powder coat with minimum 3 mil thickness. BEGA Unidure® finish, a fluoropolymer technology, provides superior fade protection in Black, Bronze, and Silver. BEGA standard White is a super durable polyester powder. Optionally available RAL and custom color finishes provided in either polyester powder or liquid paint.

**Available colors**

Black (BLK) Bronze (BRZ)  
 Silver (SLV) White (WHT)  
 RAL: CUS:



**Pole-top luminaire · Asymmetric wide beam · Single**

	LED	A	B	C
<b>B77930</b>	23.6W	13 <sup>3</sup> / <sub>4</sub>	23	23 <sup>5</sup> / <sub>8</sub>

Type:

BEGA Product:

Project:

Modified:

**Available options**

CUS Custom finish  
 FSC Fusing  
 MGU Marine grade undercoat  
 RAL RAL finish

