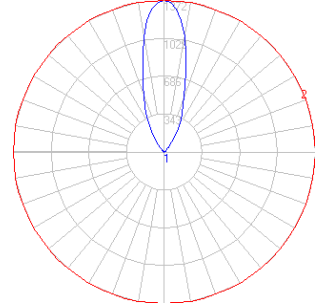


BEGA

Photometric Filename: 77915.ies

TEST: BE5978
 TEST LAB: BEGA
 DATE: 7/15/2013
 LUMINAIRE: 77 915
 LAMP: 19.8W LED

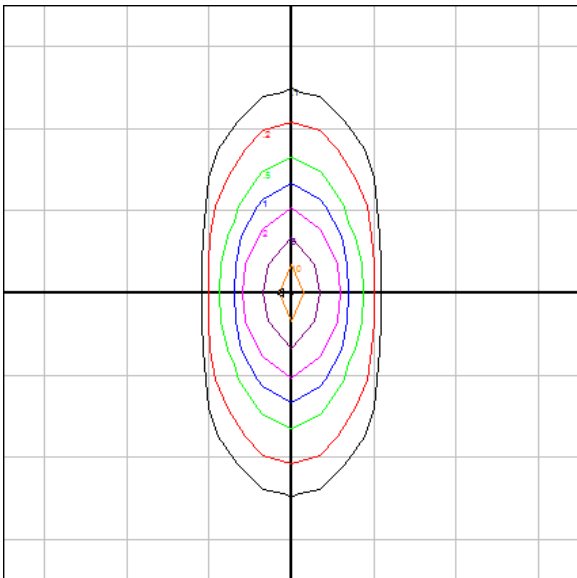


Characteristics

Lumens Per Lamp	N.A. (absolute)
Total Lamp Lumens	N.A. (absolute)
Luminaire Lumens	1360
Total Luminaire Efficiency	N.A.
Luminaire Efficacy Rating (LER)	59
Total Luminaire Watts	23
Ballast Factor	1.00
CIE Type	Indirect
Spacing Criterion (0-180)	N.A.
Spacing Criterion (90-270)	N.A.
Spacing Criterion (Diagonal)	N.A.
Basic Luminous Shape	Rectangular
Luminous Length (0-180)	0.05 m
Luminous Width (90-270)	0.48 m
Luminous Height	0.00 m
R9 Value	N.A.

Zonal Lumen Summary

Zone	Lumens
0-10	0.00
10-20	0.00
20-30	0.00
30-40	0.00
40-50	0.00
50-60	0.00
60-70	0.00
70-80	0.00
80-90	0.01
90-100	5.88
100-110	30.14
110-120	66.42
120-130	115.05
130-140	180.32
140-150	257.86
150-160	303.37
160-170	278.21
170-180	122.84



Mounting Height = 10 ft. Grid Spacing = 10 ft.

In the interest of product improvement, BEGA reserves the right to make technical changes without notice.