

Application

In-grade location luminaires. The patented mounting system allows for installation in pre-cored holes such as stone, tile or decks. These luminaires are designed to bear pressure loads up to 4400 lbs. from vehicles with pneumatic tires. The luminaires must not be used for traffic lanes where they are subject to horizontal pressure from vehicles braking, accelerating and changing direction.

Materials

Clear safety glass with white ceramic coating
 Corrosion-resistant 304 grade stainless steel
 Fully potted waterstopper cable
 High temperature silicone gasket
 Stainless steel screw clamps

NRTL listed to North American Standards, suitable for wet locations
 Protection class IP 68

Weight: 4.0 lbs.

Electrical

Operating voltage	120-277VAC
Minimum start temperature	-20° C
LED module wattage	2.1 W
System wattage	3.5 W
Controllability	Non-Dimming
Color rendering index	Ra > 80
Luminaire lumens	93 lm
LED service life (L70)	60000 hrs

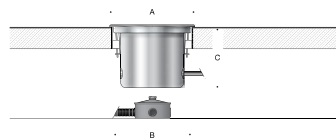
LED color temperature

- 4000K (K4)
- 3500K (K35)
- 3000K (K3)
- 2700K (K27)

BEGA can supply you with suitable LED replacement modules for up to 20 years after the purchase of LED luminaires - see website for details

Finish

#4 brushed stainless steel. Custom colors are not available.



In-grade luminaire · Location luminaire

	LED	A	B	C
B77812	2.1 W	6 ¹ / ₈	5 ³ / ₄	3 ¹ / ₈

Type:

BEGA Product:

Project:

Modified:

Available options

- FSC
- NSL
- Fusing
- Non-skid lens

