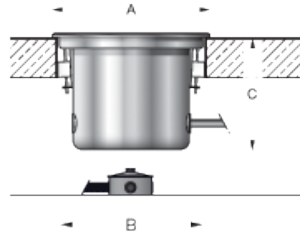


Tools Required:

- Small slotted standard screwdriver
- 4mm hex key
- 3mm hex key
- T25 torque driver

CSA certified to U.S. and Canadian standards.
Suitable for wet locations.

Protection Class: IP68 10m



Dimensions

- A:** 6-1/8 "
- B:** 5-3/4 "
- C:** 3-1/8 "



Notice to Installer for 77 812:

1. **BEGA luminaires may be damaged if connected to conduit systems containing water - Article 300-5G of National Electric Code requires that "Conduits or raceways through which moisture may contact energized live parts shall be sealed or plugged at either or both ends".**
2. A separate wiring box suitable for outdoor locations (Bell #5361-0 or equivalent) for power supply must be provided (by others).
3. Proper drainage **MUST** be provided. Failure to do so may result in over-condensation and void warranty.
4. For proper installation, HOUSING AND FINISHED SURFACE MUST BE INSTALLED SO THAT THE TOP OF THE HOUSING (BOTTOM OF FACEPLATE) SITS FLUSH OR SLIGHTLY ABOVE THE FINISHED SURFACE.
5. For vehicular loads, housing must be anchored to a suitable, load bearing foundation (1-1/2" minimum depth). In all other applications, load bearing foundation should be sufficient to support anticipated load onto fixture.
6. **ONLY HAND TOOLS MUST BE USED.**
7. **WARNING:** LEDs are high quality electrical components. Please avoid touching them directly during installation.

77 812 - housing installation in a pre-cored hole:

1. Loosen the (4) 4mm hex screws, and remove faceplate. Carefully pull out the gasket with diffuser. (Fig.1)
2. The housing is provided with three (3) wedge-shaped adjustable clamps, designed to mount to a pre-cored hole in the ground (minimum opening - 5-11/16").
3. Establish location of wiring box. (These luminaires are pre-wired with (9) feet of waterproof cable, factory sealed to the luminaire housing.) Provide drainage.
 - NOTE:** Provide at least 6" of material (pea gravel or similar) under fixture and wiring box to prevent build-up of standing water.
4. Make supply wiring and cable connections inside wiring box:
 - MAIN VOLTAGE SUPPLY WIRE TO BLACK LUMINAIRE WIRE
 - NEUTRAL (COMMON) SUPPLY WIRE TO WHITE LUMINAIRE WIRE
 - GREEN GROUND WIRE TO GREEN LUMINAIRE WIRE
5. Loosen the three (3) torque-head screws to adjust the clamps (Fig.2), and insert the housing into the prepared hole.
6. Tighten the torque-head screws to secure the housing firmly. The top edge of housing must be flush with (or slightly above) finished surface. Make sure housing is installed so the faceplate does not rest on finished surface. Finish surface.

77 812 - faceplate installation:

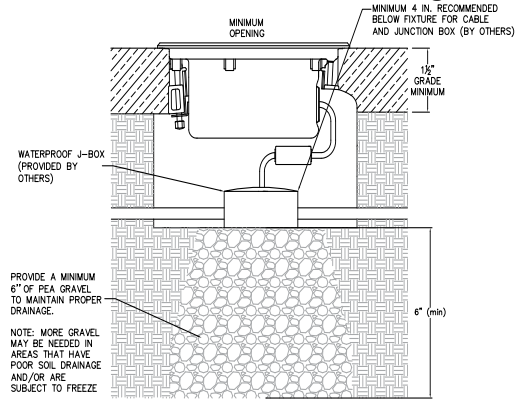
1. Replace faceplate and tighten the (5) M5 flathead screws firmly and evenly in a criss-cross pattern. Torque - 44.5 lbf-in.



Fig.1



Fig.2



NOTE: Graphic is generic. Please see fixture submittal drawing for more detail.
www.bega-us.com

Relamping/Maintenance

No relamping required.

Accessories

Please refer to the appropriate accessory installation sheet for further instruction when applicable.

Replacement Parts

Description	Part No
Diffuser	140740+R
Gasket	831163
Driver (120-277V)	76066
LED Module (3000K)	LED-0305/830
LED Module (4000K)	LED-0305/840

Lamp: 2.1W LED

In the interest of product improvement, BEGA reserves the right to make technical changes without notice.

Product Safety Warnings:

THIS PRODUCT MUST BE INSTALLED IN ACCORDANCE WITH THE APPLICABLE INSTALLATION CODE BY A PERSON FAMILIAR WITH THE CONSTRUCTION AND OPERATION OF THE PRODUCT AND THE HAZARDS INVOLVED. SUITABLE FOR WET LOCATIONS.

MIN 90°C SUPPLY CONDUCTORS.

CE PRODUIT DOIT ÊTRE INSTALLÉ SELON LE CODE D'INSTALLATION PERTINENT, PAR UNE PERSONNE QUI CONNAÎT BIEN LE PRODUIT ET SON FONCTIONNEMENT AINSI QUE LES RISQUES INHÉRENTS. CONVIENT AUX EMPLACEMENTS MOUILLÉS.

LES FILS D'ALIMENTATION 90°C MIN.
