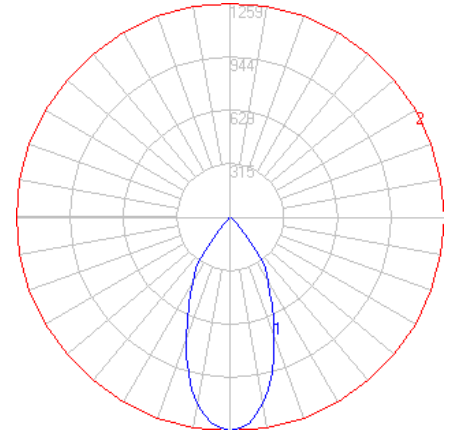


# BEGA

Photometric Filename: 77699.ies

TEST: BE\_77699  
 TEST LAB: BEGA  
 DATE: 9/5/2016  
 LUMINAIRE: 77 699  
 LAMP: 7.9W LED, 24VDC

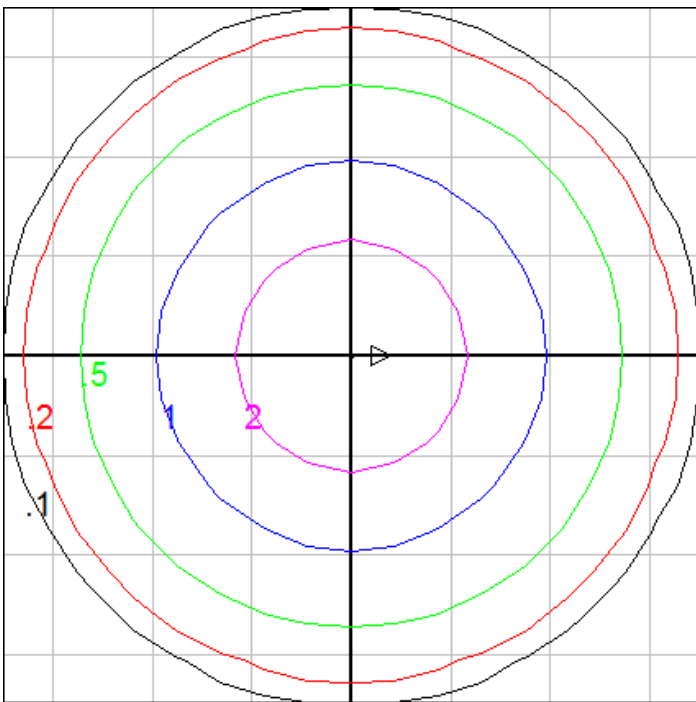


**Characteristics**

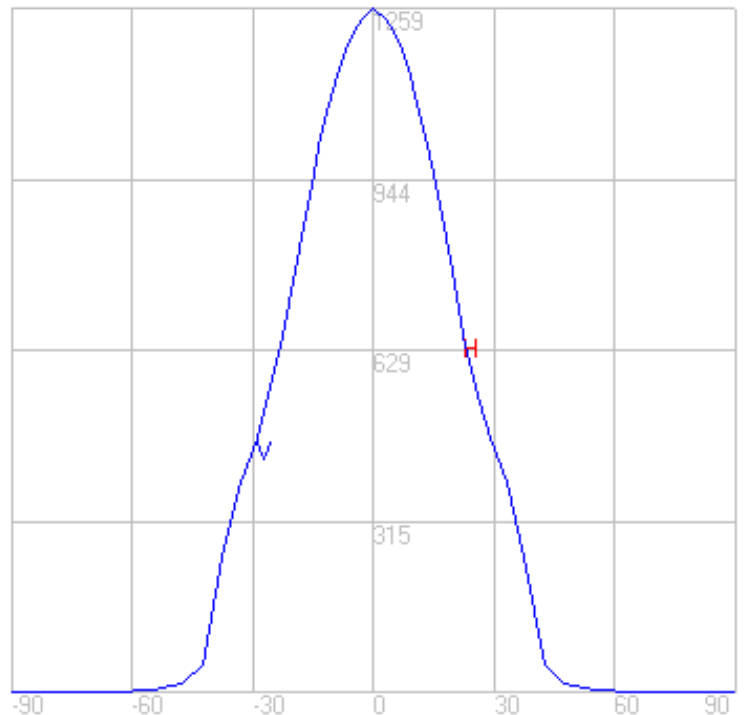
|                              |                 |
|------------------------------|-----------------|
| NEMA Type                    | 5 H x 5 V       |
| Maximum Candela              | 1258.9          |
| Maximum Candela Angle        | 0 H 0 V         |
| Horizontal Beam Angle (50%)  | 46.8            |
| Vertical Beam Angle (50%)    | 46.8            |
| Horizontal Field Angle (10%) | 81.2            |
| Vertical Field Angle (10%)   | 81.2            |
| Lumens Per Lamp              | N.A. (absolute) |
| Total Lamp Lumens            | N.A. (absolute) |
| Beam Lumens                  | 468             |
| Beam Efficiency              | N.A.            |
| Field Lumens                 | 845             |
| Field Efficiency             | N.A.            |
| Spill Lumens                 | 33              |
| Luminaire Lumens             | 878             |
| Total Efficiency             | N.A.            |
| Total Luminaire Watts        | 9               |
| Ballast Factor               | 1.00            |

**Zonal Lumen Summary**

| Zone    | Lumens |
|---------|--------|
| 0-10    | 113.07 |
| 10-20   | 263.24 |
| 20-30   | 266.40 |
| 30-40   | 196.98 |
| 40-50   | 30.58  |
| 50-60   | 4.37   |
| 60-70   | 0.76   |
| 70-80   | 0.21   |
| 80-90   | 0.07   |
| 90-100  | 0.00   |
| 100-110 | 0.00   |
| 110-120 | 0.00   |
| 120-130 | 0.00   |
| 130-140 | 0.00   |
| 140-150 | 0.00   |
| 150-160 | 0.00   |
| 160-170 | 0.00   |
| 170-180 | 0.00   |



Fixture Setback = 15 ft. Grid Spacing = 5 ft.

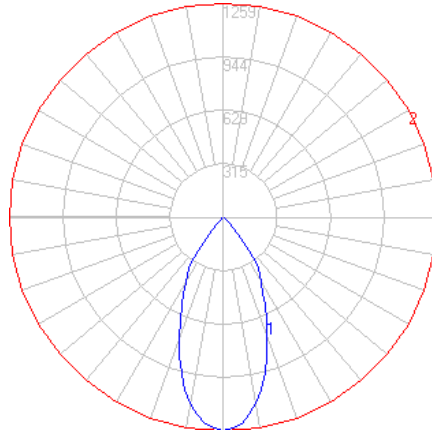


In the interest of product improvement, BEGA reserves the right to make technical changes without notice.

# BEGA

Photometric Filename: 77699.ies

TEST: BE\_77699\_70050  
 TEST LAB: BEGA  
 DATE: 9/5/2016  
 LUMINAIRE: 77 699 + 70 050  
 LAMP: 7.9W LED, 24VDC

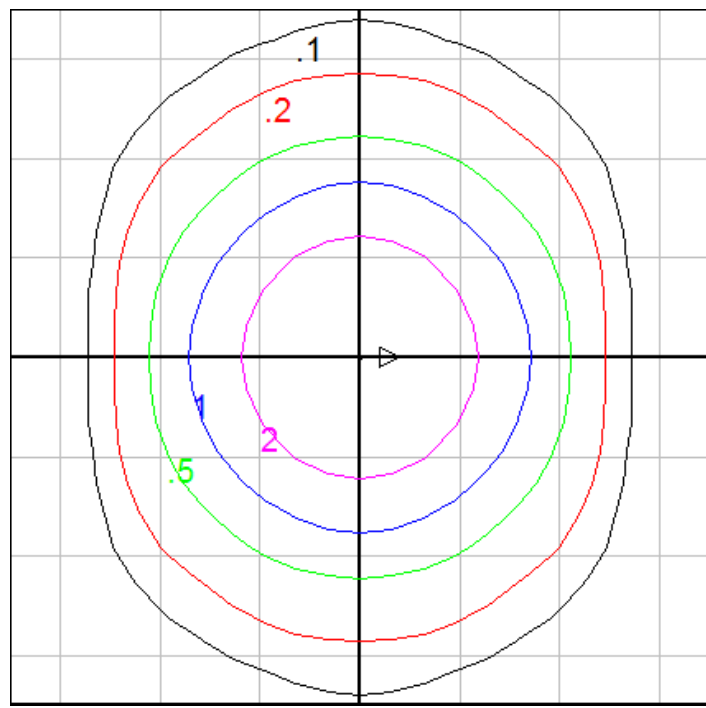


### Characteristics

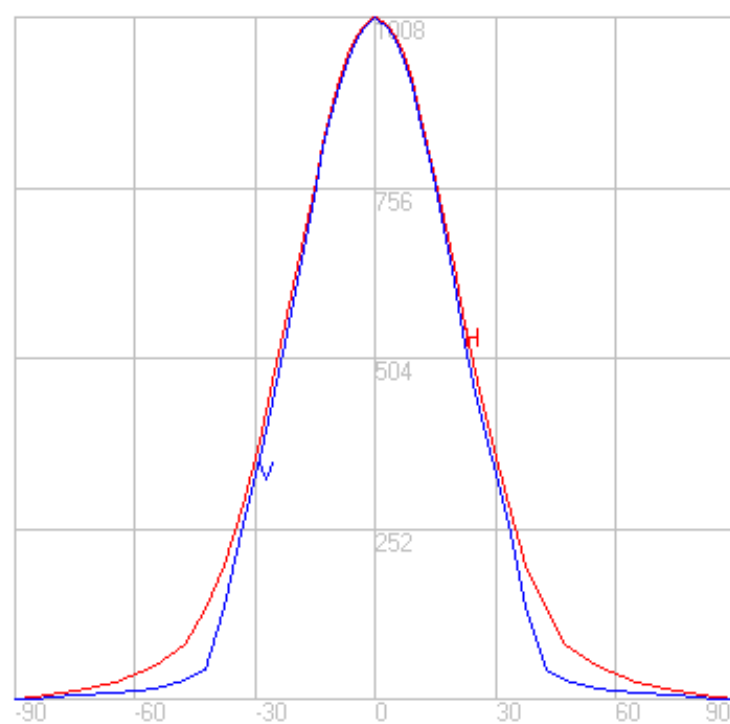
|                              |                 |
|------------------------------|-----------------|
| NEMA Type                    | 5 H x 5 V       |
| Maximum Candela              | 1007.8          |
| Maximum Candela Angle        | 0 H 0 V         |
| Horizontal Beam Angle (50%)  | 48.6            |
| Vertical Beam Angle (50%)    | 46.5            |
| Horizontal Field Angle (10%) | 91.3            |
| Vertical Field Angle (10%)   | 78.8            |
| Lumens Per Lamp              | N.A. (absolute) |
| Total Lamp Lumens            | N.A. (absolute) |
| Beam Lumens                  | 381             |
| Beam Efficiency              | N.A.            |
| Field Lumens                 | 681             |
| Field Efficiency             | N.A.            |
| Spill Lumens                 | 87              |
| Luminaire Lumens             | 768             |
| Total Efficiency             | N.A.            |
| Total Luminaire Watts        | 9               |
| Ballast Factor               | 1.00            |

### Zonal Lumen Summary

| Zone    | Lumens |
|---------|--------|
| 0-10    | 90.73  |
| 10-20   | 210.69 |
| 20-30   | 213.53 |
| 30-40   | 143.14 |
| 40-50   | 60.39  |
| 50-60   | 25.36  |
| 60-70   | 13.72  |
| 70-80   | 7.47   |
| 80-90   | 2.01   |
| 90-100  | 0.00   |
| 100-110 | 0.00   |
| 110-120 | 0.00   |
| 120-130 | 0.00   |
| 130-140 | 0.00   |
| 140-150 | 0.00   |
| 150-160 | 0.00   |
| 160-170 | 0.00   |
| 170-180 | 0.00   |



Fixture Setback = 15 ft. Grid Spacing = 5 ft.

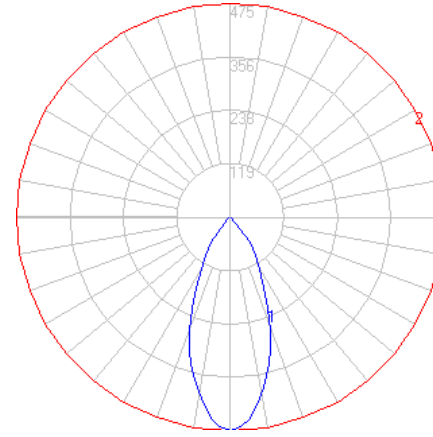


In the interest of product improvement, BEGA reserves the right to make technical changes without notice.

# BEGA

Photometric Filename: 77699AMB.ies

TEST: L021905802  
 TEST LAB: LIGHT LABORATORY, INC.  
 DATE: 3/4/2019  
 LUMINAIRE: 77 699 Amber  
 LAMP: 9.0W LED, 24VDC

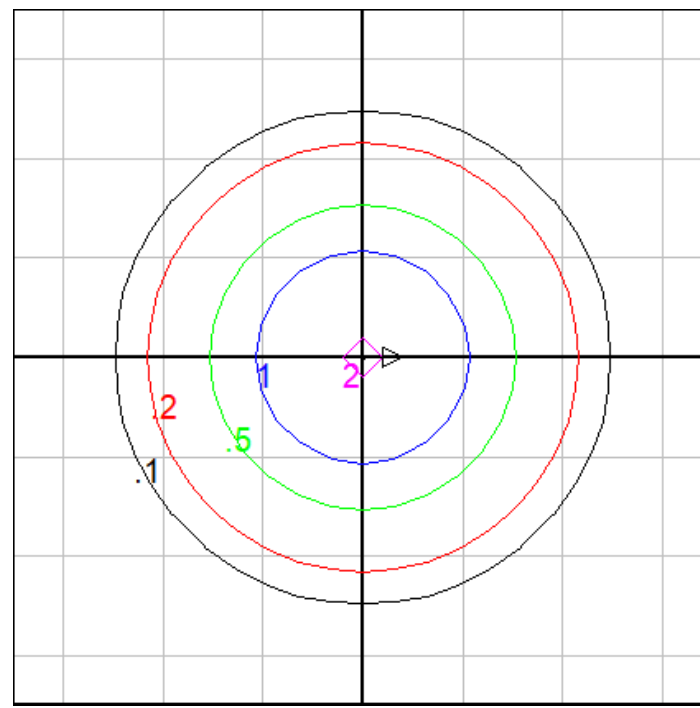


### Characteristics

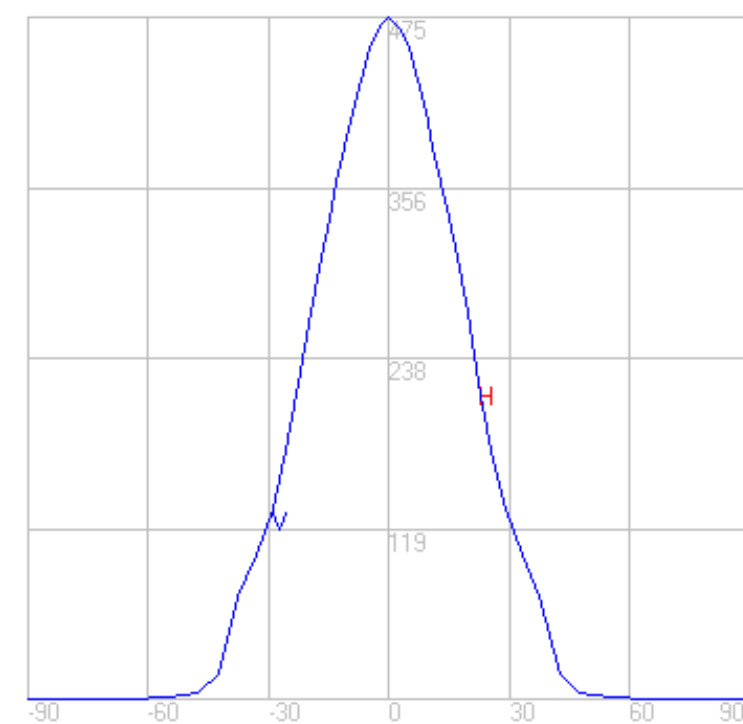
|                              |                 |
|------------------------------|-----------------|
| NEMA Type                    | 5 H x 5 V       |
| Maximum Candela              | 475.15          |
| Maximum Candela Angle        | 0 H 0 V         |
| Horizontal Beam Angle (50%)  | 42.9            |
| Vertical Beam Angle (50%)    | 42.9            |
| Horizontal Field Angle (10%) | 79.5            |
| Vertical Field Angle (10%)   | 79.5            |
| Lumens Per Lamp              | N.A. (absolute) |
| Total Lamp Lumens            | N.A. (absolute) |
| Beam Lumens                  | 149             |
| Beam Efficiency              | N.A.            |
| Field Lumens                 | 267             |
| Field Efficiency             | N.A.            |
| Spill Lumens                 | 18              |
| Luminaire Lumens             | 285             |
| Total Efficiency             | N.A.            |
| Total Luminaire Watts        | 9.61            |
| Ballast Factor               | 1.00            |

### Zonal Lumen Summary

| Zone    | Lumens |
|---------|--------|
| 0-10    | 34.11  |
| 10-20   | 94.91  |
| 20-30   | 82.20  |
| 30-40   | 50.90  |
| 40-50   | 19.94  |
| 50-60   | 1.62   |
| 60-70   | 0.93   |
| 70-80   | 0.52   |
| 80-90   | 0.22   |
| 90-100  | 0.00   |
| 100-110 | 0.00   |
| 110-120 | 0.00   |
| 120-130 | 0.00   |
| 130-140 | 0.00   |
| 140-150 | 0.00   |
| 150-160 | 0.00   |
| 160-170 | 0.00   |
| 170-180 | 0.00   |



Fixture Setback = 15 ft. Grid Spacing = 5 ft.



In the interest of product improvement, BEGA reserves the right to make technical changes without notice.