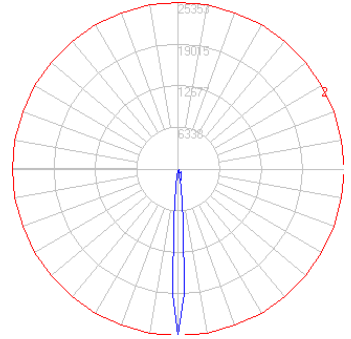


BEGA

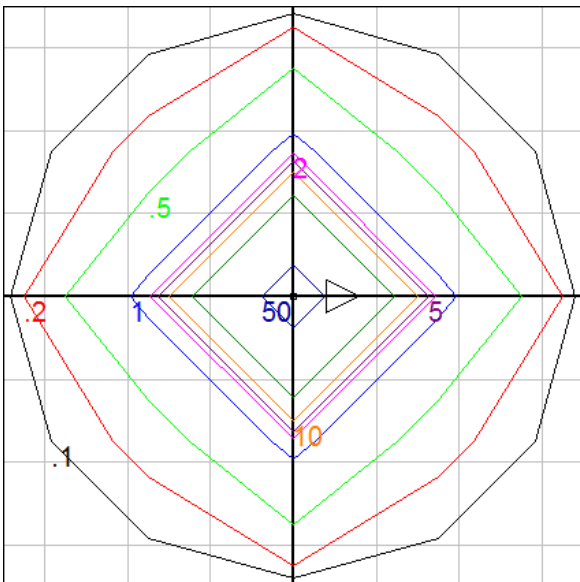
Photometric Filename: 77680.ies

TEST: L04121710
 TEST LAB: LIGHT LABORATORY, INC.
 DATE: 4/24/2012
 LUMINAIRE: 77 680
 LAMP: 13W LED

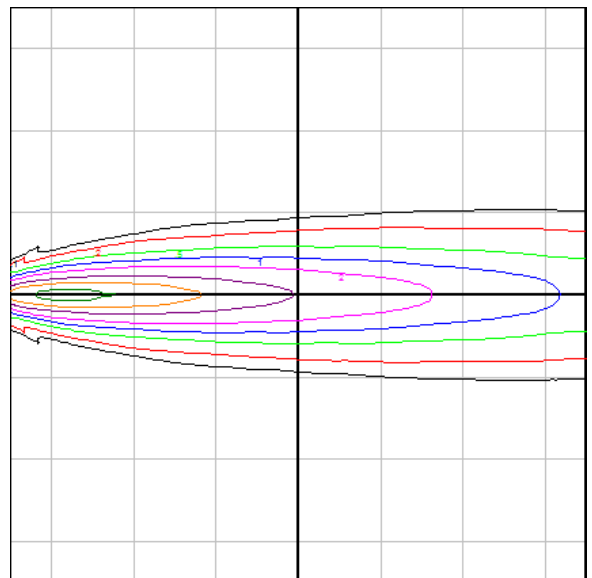


Characteristics

NEMA Type	1 H x 1 V
Maximum Candela	25353
Maximum Candela Angle	0 H 0 V
Horizontal Beam Angle (50%)	7.8
Vertical Beam Angle (50%)	7.8
Horizontal Field Angle (10%)	16.3
Vertical Field Angle (10%)	16.3
Lumens Per Lamp	N.A. (absolute)
Total Lamp Lumens	N.A. (absolute)
Beam Lumens	201
Beam Efficiency	N.A.
Field Lumens	517
Field Efficiency	N.A.
Spill Lumens	158
Luminaire Lumens	675
Total Efficiency	N.A.
Total Luminaire Watts	16
R9 Value	60.18



Setback = 20 ft. Grid Spacing = 2.5 ft.



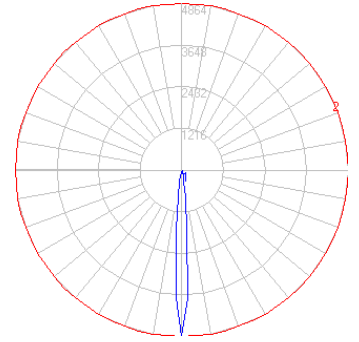
Beam Cross Section Grid Spacing = 3 ft.

In the interest of product improvement, BEGA reserves the right to make technical changes without notice.

BEGA

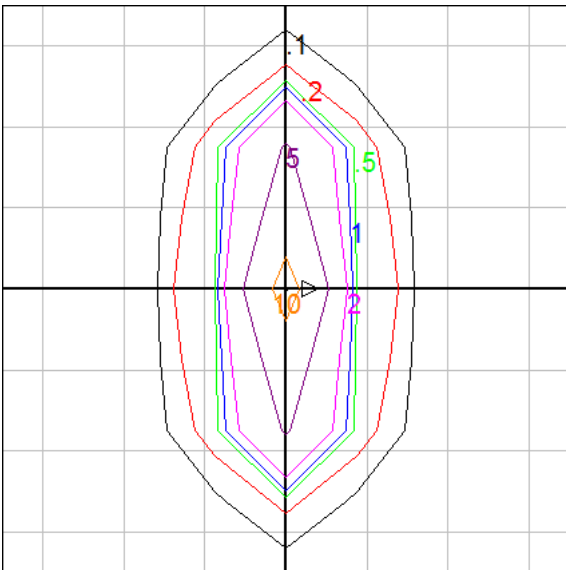
Photometric Filename: 77680_70075.ies

TEST: L04121710
 TEST LAB: LIGHT LABORATORY, INC.
 DATE: 4/24/2012
 LUMINAIRE: 77 680 + 70 075
 LAMP: 13W LED

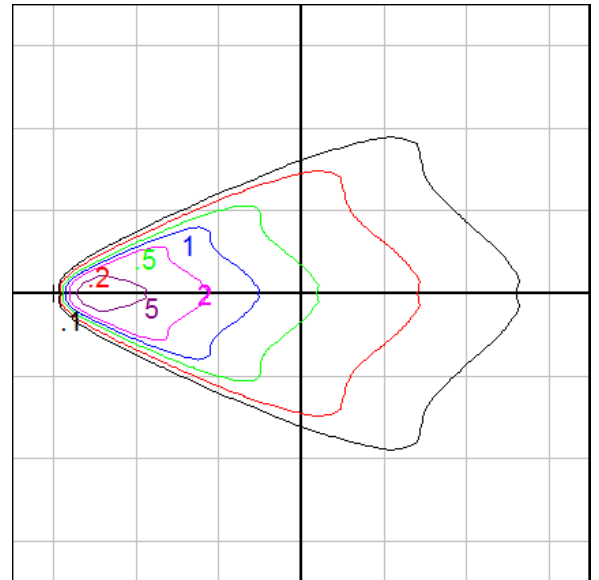


Characteristics

NEMA Type	4 H x 2 V
Maximum Candela	4863.8
Maximum Candela Angle	0 H 0 V
Horizontal Beam Angle (50%)	49.8
Vertical Beam Angle (50%)	8.3
Horizontal Field Angle (10%)	62.4
Vertical Field Angle (10%)	18.6
Lumens Per Lamp	N.A. (absolute)
Total Lamp Lumens	N.A. (absolute)
Beam Lumens	235
Beam Efficiency	N.A.
Field Lumens	518
Field Efficiency	N.A.
Spill Lumens	82
Luminaire Lumens	600
Total Efficiency	N.A.
Total Luminaire Watts	15
R9 Value	60.18



Setback = 20 ft. Grid Spacing = 5 ft.



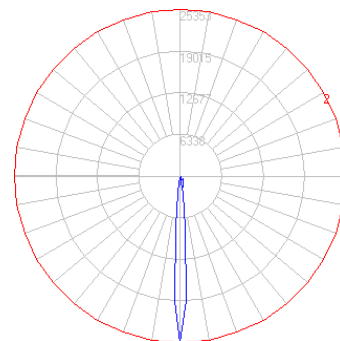
Beam Cross Section Grid Spacing = 5 ft.

In the interest of product improvement, BEGA reserves the right to make technical changes without notice.

BEGA

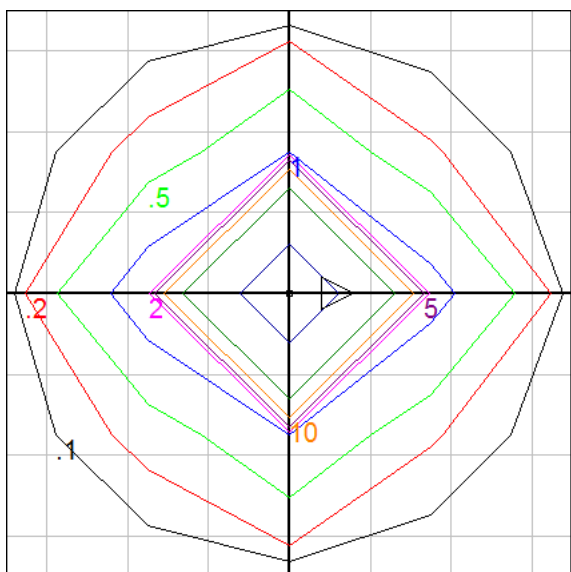
Photometric Filename: 77680_70756.ies

TEST: L04121710
TEST LAB: LIGHT LABORATORY, INC.
DATE: 4/24/2012
LUMINAIRE: 77 680 + 70 756
LAMP: 13W LED



Characteristics

NEMA Type	1 H x 1 V
Maximum Candela	30415.9
Maximum Candela Angle	0 H 0 V
Horizontal Beam Angle (50%)	6.4
Vertical Beam Angle (50%)	6.5
Horizontal Field Angle (10%)	14.2
Vertical Field Angle (10%)	15.1
Lumens Per Lamp	N.A. (absolute)
Total Lamp Lumens	N.A. (absolute)
Beam Lumens	211
Beam Efficiency	N.A.
Field Lumens	497
Field Efficiency	N.A.
Spill Lumens	159
Luminaire Lumens	657
Total Efficiency	N.A.
Total Luminaire Watts	15
R9 Value	60.18



Setback = 20 ft. Grid Spacing = 2.5 ft.

In the interest of product improvement, BEGA reserves the right to make technical changes without notice.

BEGA 1000 Bega Way, Carpinteria, CA 93013 (805)684-0533 Fax (805)566-9474 www.bega-us.com © Copyright BEGA-US 2015

8/10/2015