

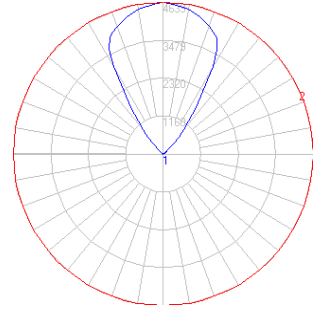
# BEGA

Photometric Filename: 77637.IES

TEST: L12131307  
 TEST LAB: LIGHT LABORATORY, INC.  
 DATE: 12/20/2013  
 LUMINAIRE: 77 637  
 LAMP: 50.4W LED



All results in accordance with IESNA LM-79-08

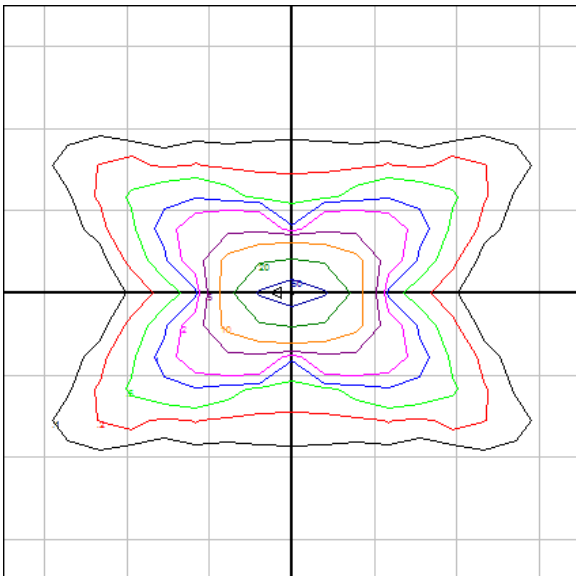


### Characteristics

Lumens Per Lamp	N.A. (absolute)
Total Lamp Lumens	N.A. (absolute)
Luminaire Lumens	3959
Total Luminaire Efficiency	N.A.
Luminaire Efficacy Rating (LER)	65
Total Luminaire Watts	61.35
Ballast Factor	1.00
CIE Type	Indirect
Spacing Criterion (0-180)	N.A.
Spacing Criterion (90-270)	N.A.
Spacing Criterion (Diagonal)	N.A.
Basic Luminous Shape	Rectangular
Luminous Length (0-180)	4.83 ft
Luminous Width (90-270)	0.21 ft
Luminous Height	0.00 ft
R9 Value	19.86

### Zonal Lumen Summary

Zone	Lumens
0-10	0.00
10-20	0.00
20-30	0.00
30-40	0.00
40-50	0.00
50-60	0.00
60-70	0.00
70-80	0.00
80-90	0.00
90-100	22.37
100-110	58.69
110-120	140.90
120-130	279.37
130-140	461.05
140-150	740.49
150-160	969.79
160-170	874.18
170-180	411.67



Mounting Height = 8 ft. Grid Spacing = 7.5 ft.

In the interest of product improvement, BEGA reserves the right to make technical changes without notice.