

Application

In-grade adjustable floodlight luminaires. These luminaires are designed to bear especially high pressure loads of up to 11,000 lbs from vehicles with pneumatic tires. The luminaires must not be used for traffic lanes where they are subject to horizontal pressure from vehicles braking, accelerating and changing direction.

Materials

- Clear safety glass
- Corrosion-resistant 304 grade stainless steel
- High temperature silicone gasket
- Fully potted waterstopper cable
- Pure anodized aluminum reflector

NRTL listed to North American Standards, suitable for wet locations
Protection class IP 68

Weight: 16.3lbs.

Electrical

Operating voltage	120-277V AC
Minimum start temperature	-30° C
LED module wattage	17.8 W
System wattage	22.8 W
Controllability	0-10V dimmable
Color rendering index	Ra > 80
Luminaire lumens	1028 lm
LED service life (L70)	60000 hrs

LED color temperature

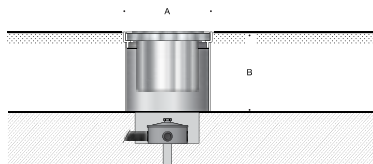
- 4000K (K4)
- 3500K (K35)
- 3000K (K3)
- 2700K (K27)

BEGA can supply you with suitable LED replacement modules for up to 20 years after the purchase of LED luminaires - see website for details

Finish

#4 brushed stainless steel. Custom colors are not available.

- Available options**
- B70273 Round spread lens
 - B70274 Elliptical spread lens
 - FSC Fusing
 - NSL Non-skid lens



In-grade luminaire · Adjustable

	LED	□	A	B
B77629	17.8W	19°	10	8 ³ / ₄

