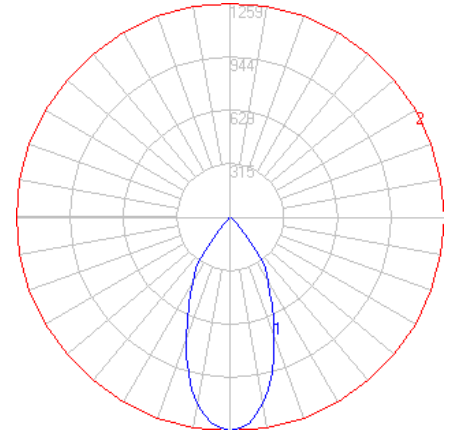


# BEGA

Photometric Filename: 77607.ies

TEST: BE\_77607  
 TEST LAB: BEGA  
 DATE: 9/5/2016  
 LUMINAIRE: 77 607  
 LAMP: 7.9W LED, 24VDC

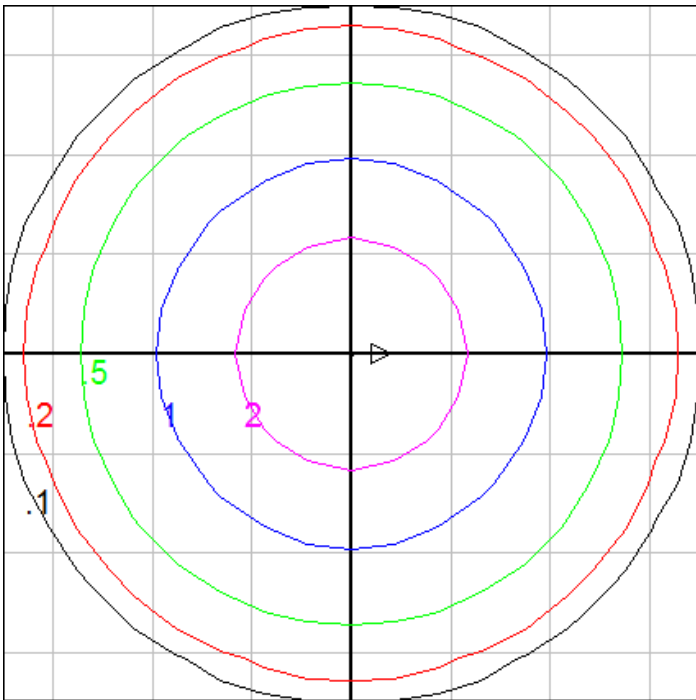


**Characteristics**

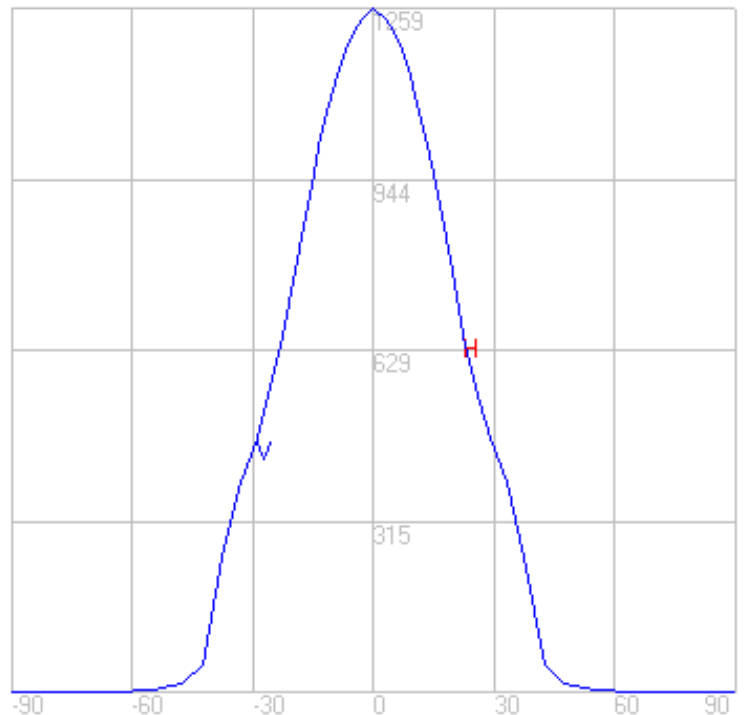
NEMA Type	5 H x 5 V
Maximum Candela	1258.9
Maximum Candela Angle	0 H 0 V
Horizontal Beam Angle (50%)	46.8
Vertical Beam Angle (50%)	46.8
Horizontal Field Angle (10%)	81.2
Vertical Field Angle (10%)	81.2
Lumens Per Lamp	N.A. (absolute)
Total Lamp Lumens	N.A. (absolute)
Beam Lumens	468
Beam Efficiency	N.A.
Field Lumens	845
Field Efficiency	N.A.
Spill Lumens	33
Luminaire Lumens	878
Total Efficiency	N.A.
Total Luminaire Watts	9
Ballast Factor	1.00

**Zonal Lumen Summary**

Zone	Lumens
0-10	113.07
10-20	263.24
20-30	266.40
30-40	196.98
40-50	30.58
50-60	4.37
60-70	0.76
70-80	0.21
80-90	0.07
90-100	0.00
100-110	0.00
110-120	0.00
120-130	0.00
130-140	0.00
140-150	0.00
150-160	0.00
160-170	0.00
170-180	0.00



Fixture Setback = 15 ft. Grid Spacing = 5 ft.

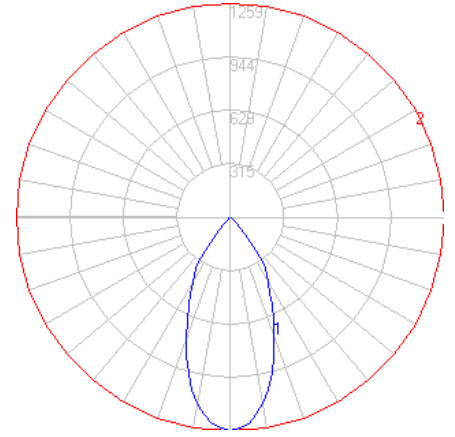


In the interest of product improvement, BEGA reserves the right to make technical changes without notice.

# BEGA

Photometric Filename: 77607.ies

TEST: BE\_77607\_70050  
 TEST LAB: BEGA  
 DATE: 9/5/2016  
 LUMINAIRE: 77 607 + 70 050  
 LAMP: 7.9W LED, 24VDC

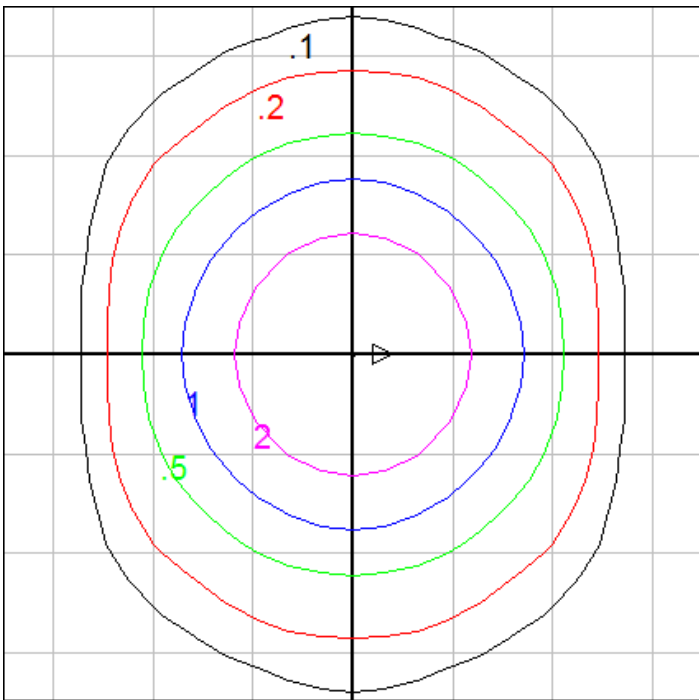


## Characteristics

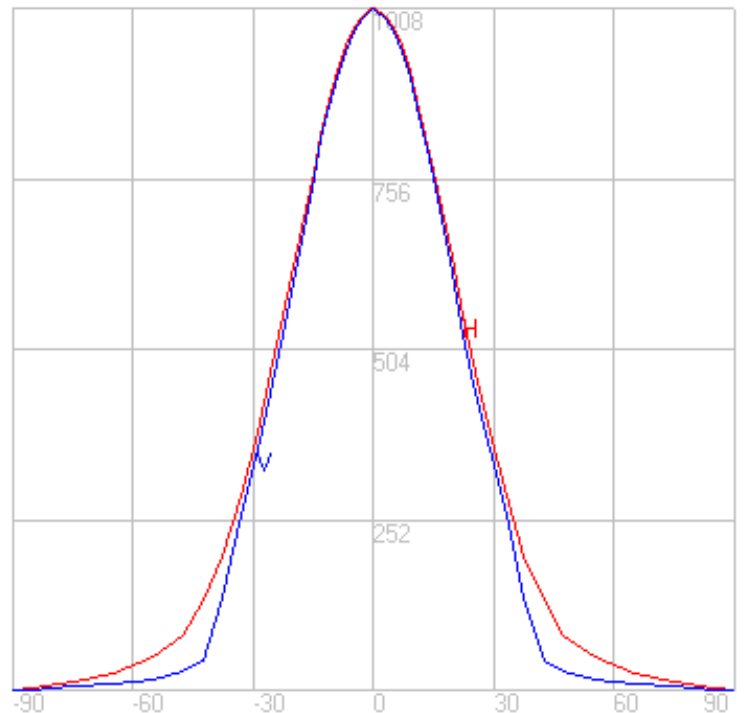
NEMA Type	5 H x 5 V
Maximum Candela	1007.8
Maximum Candela Angle	0 H 0 V
Horizontal Beam Angle (50%)	48.6
Vertical Beam Angle (50%)	46.5
Horizontal Field Angle (10%)	91.3
Vertical Field Angle (10%)	78.8
Lumens Per Lamp	N.A. (absolute)
Total Lamp Lumens	N.A. (absolute)
Beam Lumens	381
Beam Efficiency	N.A.
Field Lumens	681
Field Efficiency	N.A.
Spill Lumens	87
Luminaire Lumens	768
Total Efficiency	N.A.
Total Luminaire Watts	9
Ballast Factor	1.00

## Zonal Lumen Summary

Zone	Lumens
0-10	90.73
10-20	210.69
20-30	213.53
30-40	143.14
40-50	60.39
50-60	25.36
60-70	13.72
70-80	7.47
80-90	2.01
90-100	0.00
100-110	0.00
110-120	0.00
120-130	0.00
130-140	0.00
140-150	0.00
150-160	0.00
160-170	0.00
170-180	0.00



Fixture Setback = 15 ft. Grid Spacing = 5 ft.

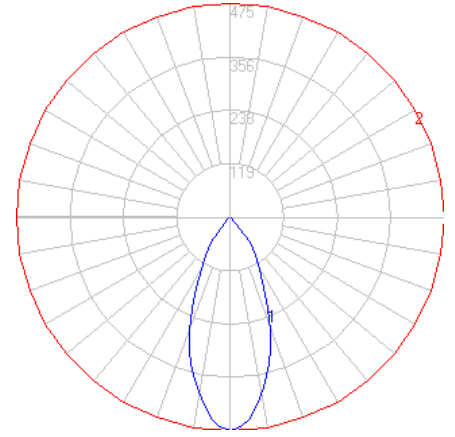


In the interest of product improvement, BEGA reserves the right to make technical changes without notice.

# BEGA

Photometric Filename: 77607AMB.ies

TEST: L021905802  
 TEST LAB: LIGHT LABORATORY, INC.  
 DATE: 3/4/2019  
 LUMINAIRE: 77 699 Amber  
 LAMP: 9.0W LED, 24VDC

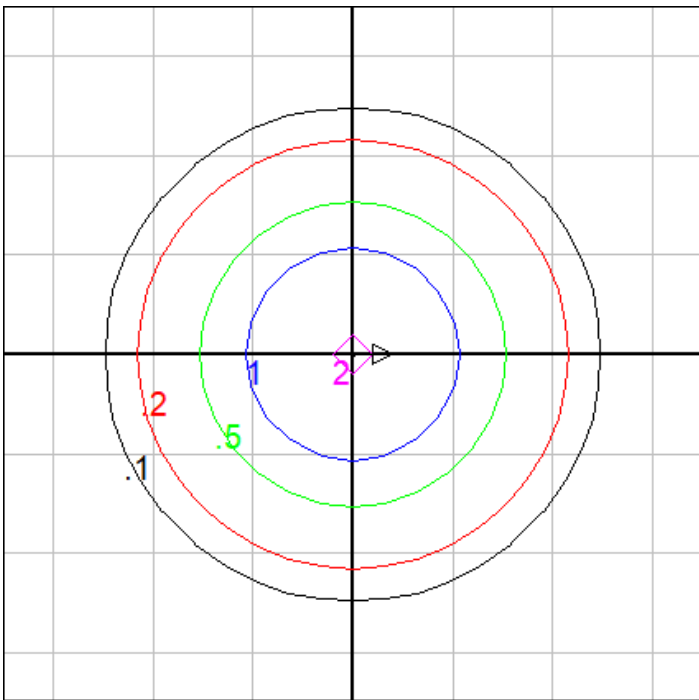


### Characteristics

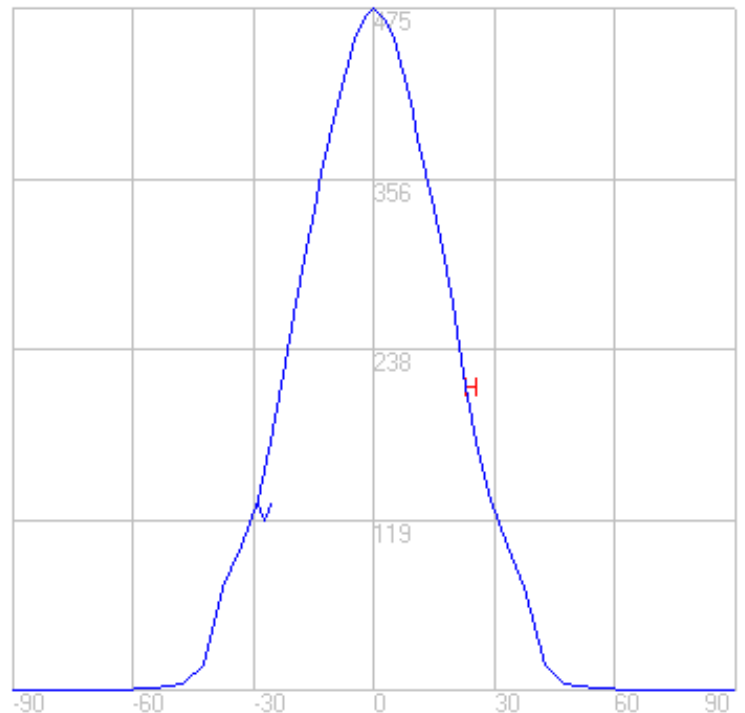
NEMA Type	5 H x 5 V
Maximum Candela	475.15
Maximum Candela Angle	0 H 0 V
Horizontal Beam Angle (50%)	42.9
Vertical Beam Angle (50%)	42.9
Horizontal Field Angle (10%)	79.5
Vertical Field Angle (10%)	79.5
Lumens Per Lamp	N.A. (absolute)
Total Lamp Lumens	N.A. (absolute)
Beam Lumens	149
Beam Efficiency	N.A.
Field Lumens	267
Field Efficiency	N.A.
Spill Lumens	18
Luminaire Lumens	285
Total Efficiency	N.A.
Total Luminaire Watts	9.61
Ballast Factor	1.00

### Zonal Lumen Summary

Zone	Lumens
0-10	34.11
10-20	94.91
20-30	82.20
30-40	50.90
40-50	19.94
50-60	1.62
60-70	0.93
70-80	0.52
80-90	0.22
90-100	0.00
100-110	0.00
110-120	0.00
120-130	0.00
130-140	0.00
140-150	0.00
150-160	0.00
160-170	0.00
170-180	0.00



Fixture Setback = 15 ft. Grid Spacing = 5 ft.



In the interest of product improvement, BEGA reserves the right to make technical changes without notice.