

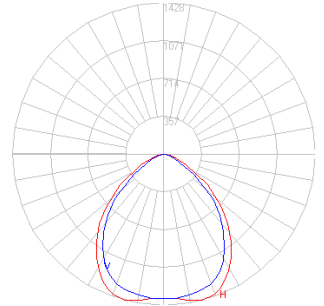
BEGA

Photometric Filename: 77559.ies

TEST: L10131106
 TEST LAB: BEGA
 DATE: 10/10/13
 LUMINAIRE: 77 559
 LAMP: 39W LED

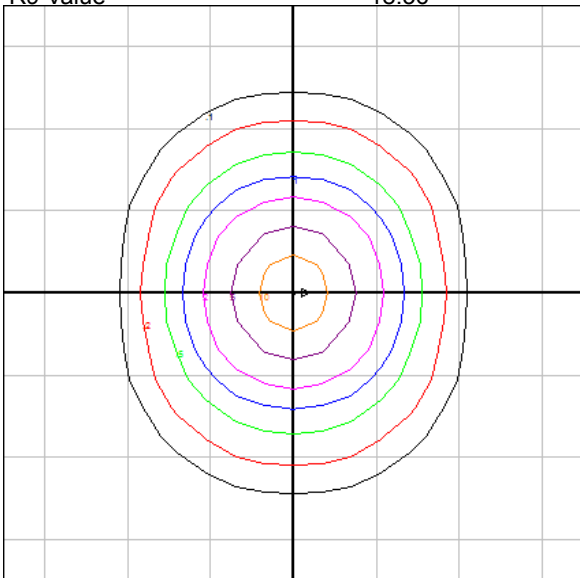


All results in accordance with IESNA LM-79-08

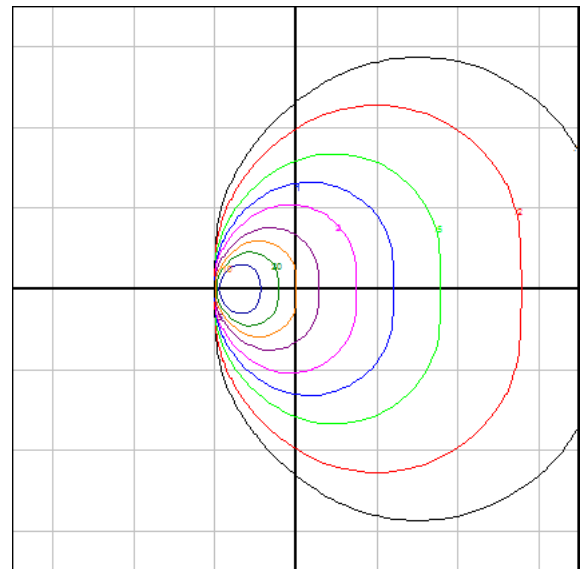


Characteristics

| | |
|------------------------------|-----------------|
| NEMA Type | 7 H x 6 V |
| Maximum Candela | 1428 |
| Maximum Candela Angle | -15 H -3 V |
| Horizontal Beam Angle (50%) | 96.5 |
| Vertical Beam Angle (50%) | 87.5 |
| Horizontal Field Angle (10%) | 141.8 |
| Vertical Field Angle (10%) | 127.4 |
| Lumens Per Lamp | N.A. (absolute) |
| Total Lamp Lumens | N.A. (absolute) |
| Beam Lumens | 2222 |
| Beam Efficiency | N.A. |
| Field Lumens | 2997 |
| Field Efficiency | N.A. |
| Spill Lumens | 100 |
| Luminaire Lumens | 3097 |
| Total Efficiency | N.A. |
| Total Luminaire Watts | 46.99 |
| Ballast Factor | 1.00 |
| R9 Value | 18.36 |



Mounting Height = 10 ft. Grid Spacing = 10 ft.



Beam Cross Section Grid Spacing = 5 ft.

In the interest of product improvement, BEGA reserves the right to make technical changes without notice.