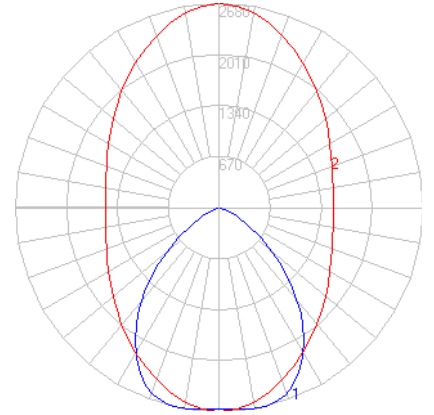


BEGA

Photometric Filename: 77536.ies

TEST: L10131107
 TEST LAB: BEGA
 DATE: 7/21/2017
 LUMINAIRE: 77 536
 LAMP: 17.9W LED



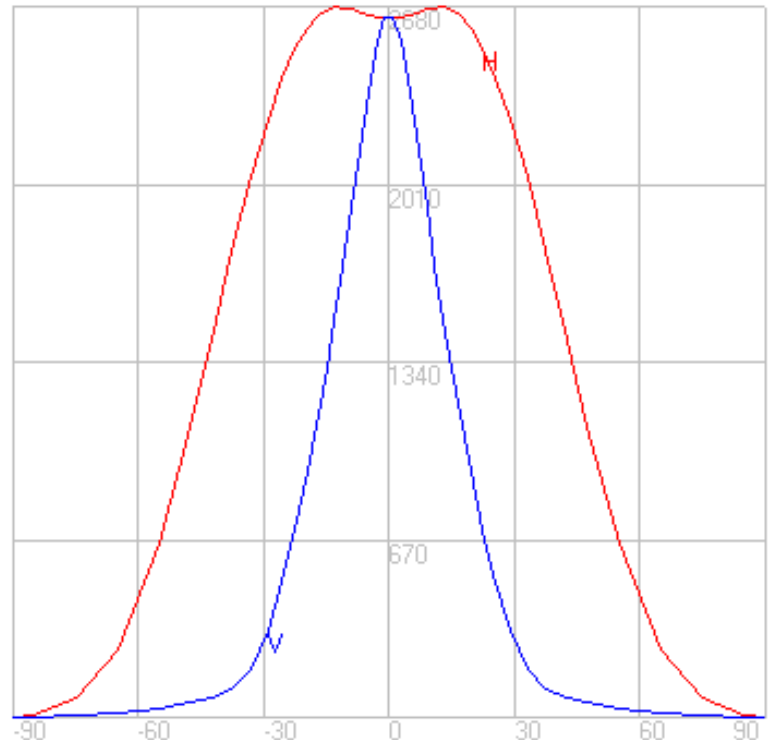
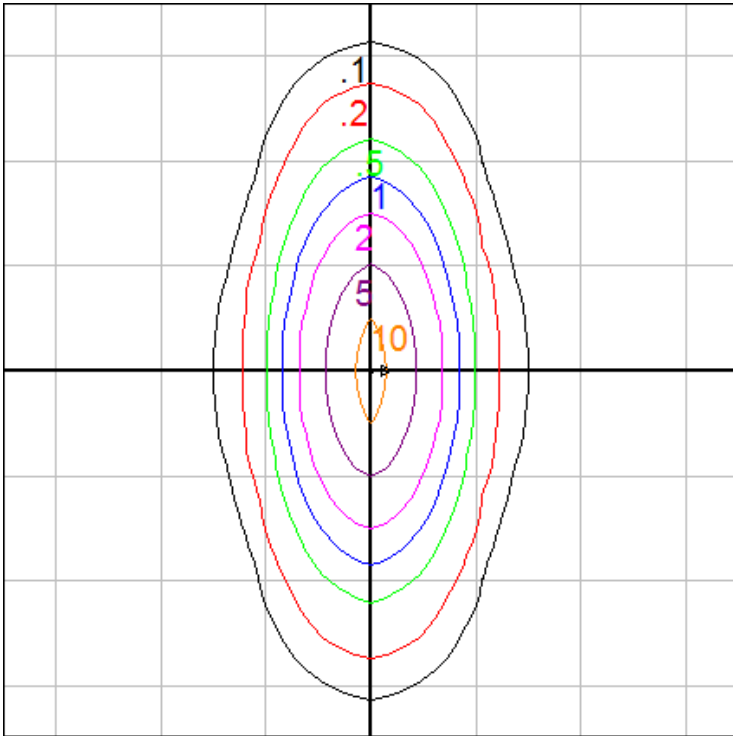
All results in accordance with IESNA LM-79-08

Characteristics

NEMA Type	6 H x 4 V
Maximum Candela	2680
Maximum Candela Angle	-13 H 0 V
Horizontal Beam Angle (50%)	87.6
Vertical Beam Angle (50%)	29.7
Horizontal Field Angle (10%)	129.5
Vertical Field Angle (10%)	62.4
Lumens Per Lamp	N.A. (absolute)
Total Lamp Lumens	N.A. (absolute)
Beam Lumens	1233
Beam Efficiency	N.A.
Field Lumens	2054
Field Efficiency	N.A.
Spill Lumens	214
Luminaire Lumens	2268
Total Efficiency	N.A.
Total Luminaire Watts	20.38
Ballast Factor	1.00
R9 Value	73.41

Zonal Lumen Summary

Zone	Lumens
0-10	187.87
10-20	529.02
20-30	536.17
30-40	393.97
40-50	318.74
50-60	147.57
60-70	106.06
70-80	40.95
80-90	11.75
90-100	0.00
100-110	0.00
110-120	0.00
120-130	0.00
130-140	0.00
140-150	0.00
150-160	0.00
160-170	0.00
170-180	0.00



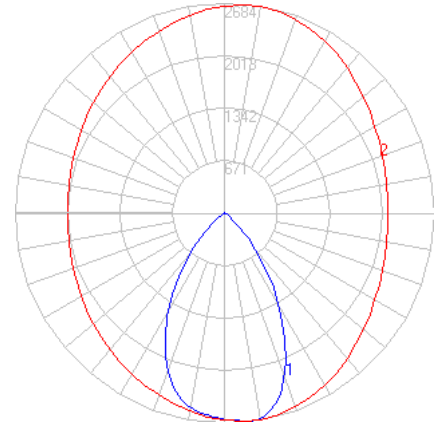
Mounting Height = 15 ft. Grid Spacing = 10 ft.

In the interest of product improvement, BEGA reserves the right to make technical changes without notice.

BEGA

Photometric Filename: 77536_70500.ies

TEST: L10131107
 TEST LAB: BEGA
 DATE: 7/21/2017
 LUMINAIRE: 77 536 + 70 500 Glare Shield
 LAMP: 17.9W LED



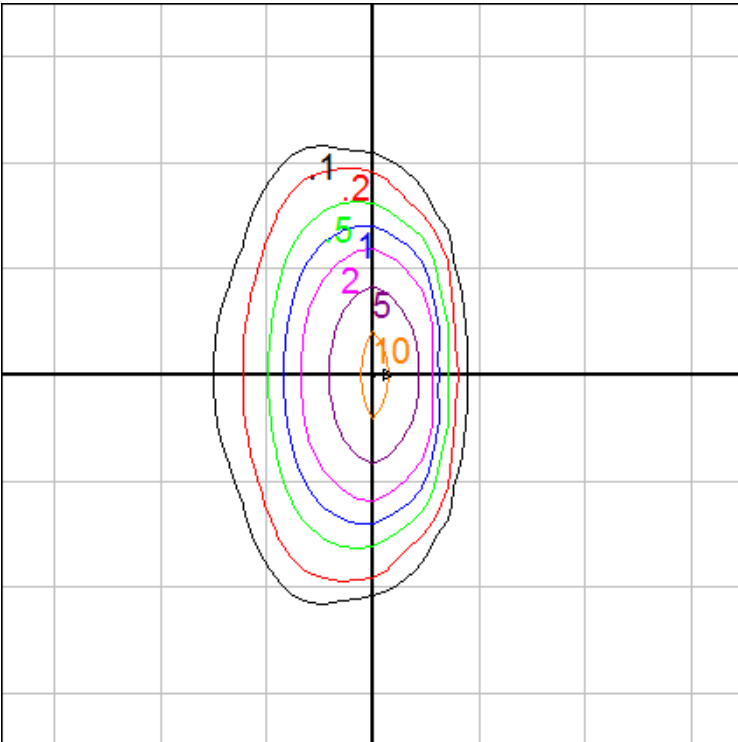
All results in accordance with IESNA LM-79-08

Characteristics

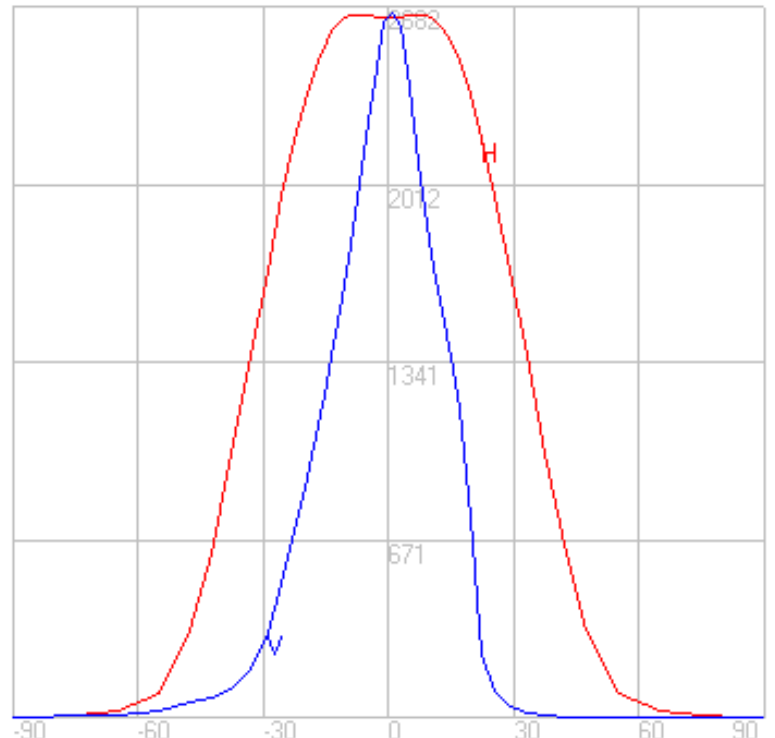
NEMA Type	5 H x 4 V
Maximum Candela	2682
Maximum Candela Angle	-7 H 1 V
Horizontal Beam Angle (50%)	66.1
Vertical Beam Angle (50%)	29.2
Horizontal Field Angle (10%)	98.0
Vertical Field Angle (10%)	53.6
Lumens Per Lamp	N.A. (absolute)
Total Lamp Lumens	N.A. (absolute)
Beam Lumens	895
Beam Efficiency	N.A.
Field Lumens	1477
Field Efficiency	N.A.
Spill Lumens	151
Luminaire Lumens	1627
Total Efficiency	N.A.
Total Luminaire Watts	20.38
Ballast Factor	1.00
R9 Value	73.41

Zonal Lumen Summary

Zone	Lumens
0-10	185.31
10-20	505.96
20-30	444.61
30-40	258.46
40-50	150.92
50-60	46.11
60-70	23.94
70-80	8.23
80-90	4.25
90-100	0.70
100-110	0.96
110-120	0.44
120-130	0.11
130-140	0.00
140-150	0.00
150-160	0.00
160-170	0.00
170-180	0.00



Mounting Height = 15 ft. Grid Spacing = 10 ft.



In the interest of product improvement, BEGA reserves the right to make technical changes without notice.