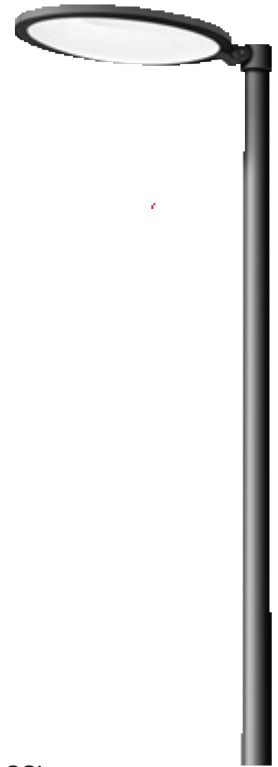


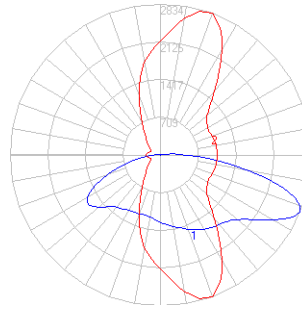
BEGA



Photometric Filename: 77530.ies

TEST: BE_77520
 TEST LAB: BEGA
 DATE: 9/16/2015
 LUMINAIRE: 77 530
 LAMP: (2) 57.4W LED

**IES file based on single luminaire. See twin template below.



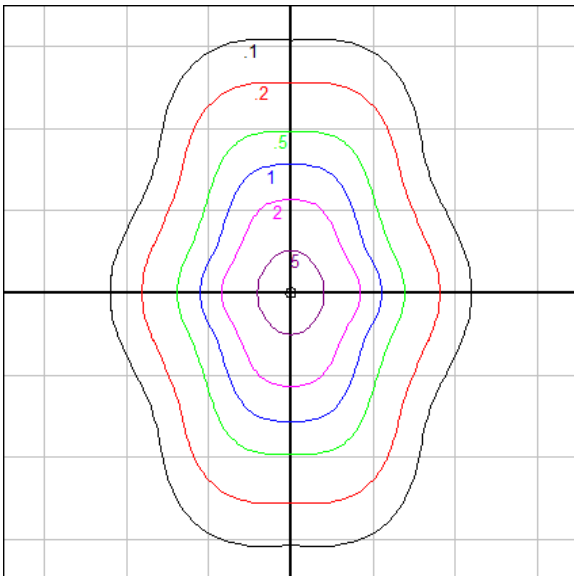
Characteristics

IES Classification	Type III
Longitudinal Classification	Medium
Lumens Per Lamp	N.A. (absolute)
Total Lamp Lumens	N.A. (absolute)
Luminaire Lumens	6781
Downward Total Efficiency	N.A.
Total Luminaire Efficiency	N.A.
Luminaire Efficacy Rating (LER)	104
Total Luminaire Watts	65
Ballast Factor	1.00
Upward Waste Light Ratio	0.01
Max. Cd.	2834.2 (290H, 67.5V)
Max. Cd. (<90 Vert.)	2834.2 (290H, 67.5V)
Max. Cd. (At 90 Deg. Vert.)	491.1 (7.2%Lum)
Max. Cd. (80 to <90 Deg. Vert.)	1679.7 (24.8%Lum)
Cutoff Classification (deprecated)	N.A. (absolute)

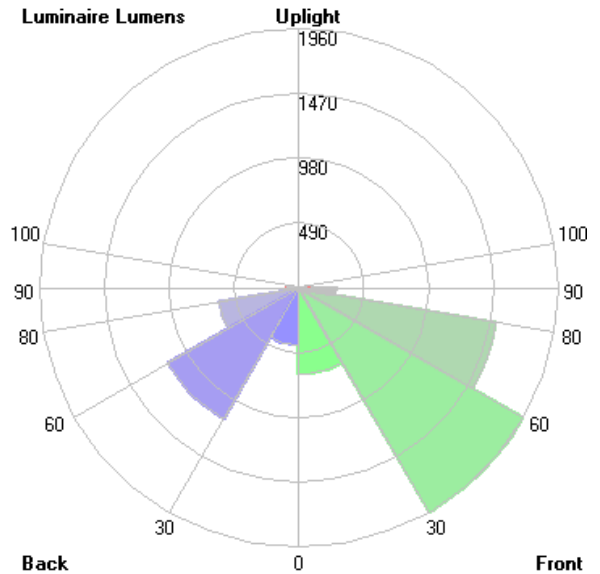
Lum. Classification System (LCS)

LCS Zone	Lumens	%Lamp	%Lum
FL (0-30)	655.8	N.A.	9.7
FM (30-60)	1960.1	N.A.	28.9
FH (60-80)	1514.3	N.A.	22.3
FVH(80-90)	283.6	N.A.	4.2
BL (0-30)	429.9	N.A.	6.3
BM (30-60)	1142.6	N.A.	16.8
BH (60-80)	610.3	N.A.	9.0
BVH(80-90)	86.3	N.A.	1.3
UL (90-100)	89.3	N.A.	1.3
UH (100-180)	8.7	N.A.	0.1
Total	6780.9	N.A.	100.0

BUG Rating B2-U3-G3



Mounting Height = 18 ft. Grid Spacing = 25 ft.



In the interest of product improvement, BEGA reserves the right to make technical changes without notice.